



Eblast for July 8, 2026

Please join us **SUNDAY** for In Person Worship



Christ Church labyrinth – July 2026
Photo by Dennis Knight

Seventh Sunday after Pentecost

July 12, 2026

Holy Eucharist – 10:30AM

**Presided by: The Rev. Brendon
Bedford;**

The readings are: Genesis 25:19-34; Psalm 119:105-112; Romans 8:1-11; Matthew 13:1-9, 18-23.

If unable to join us in person, you may join our livestream which begins at 10:30am Sunday morning – from our

website, www.christchurchanglican.ca and click on “service video”.

PARISH ANNOUNCEMENTS



1. The Midweek Prayer service and Bible study continue today, Wednesday, July 8th at 12:00noon and 1:00pm respectively.



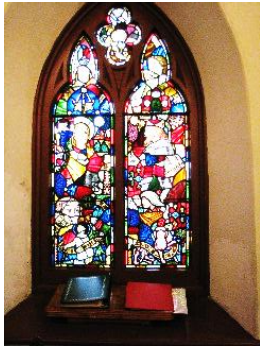
2. Choir practice is this Thursday, July 9 at 2:30PM. See you then.

3. The next Repair Cafe is Saturday, July 11th, running from 9am to 12noon. Bring in your small item(s) to repair and join us for a cup of coffee.



4. THE FREE COMMUNITY BREAKFAST IS PAUSED FOR THE SUMMER. Thank you! Breakfast crew. Enjoy a deserved summer break! We look forward to your return in the fall – watch upcoming eblasts for details.

5 Once again, all enjoyed our annual BBQ and Strawberry Social last Sunday, July 5th. Our thanks to the Chancel Guild and BAC for the delicious hamburgs, hotdogs, strawberries & ice cream and the effort put into its organization. What a lovely summer event!



6. **SAVE THE DATE: SATURDAY, AUGUST 15, 2026**

Christ Church is celebrating the **80th Anniversary of the Dedication of the WWII Memorial Windows** on **Saturday, August 15, 2026**. A full description and story of Rev. Appleyard's discovery and remarkable achievement is on our website -- [take a look here](#). Besides the rededication of the windows, we will also honour and pay tribute to WWII Fighter Pilot George (Geordie) Stevenson, the first Meaford resident to lose his life in that war (in 1941) and who was a Christ Church parishioner. In honour of his life lost, we are dedicating one of the propellers from his aircraft, that was retrieved in Scotland and has been gifted to us. **For more, please read about this on the poster at the back of the church.**



7. **JOIN US TO BID FAREWELL TO FR. BRENDON, ASHLEY, LILLIAN AND ROY with a Potluck Pool Party on Sunday, August 9th, after the service. It will be hosted by Victoria and Bill at 246013 22nd Sideroad, Meaford. (see posters). Please bring your own cutlery, plate, folding chair and a bathing suit and towel. Coffee, iced tea and lemonade will be provided.**



8. **The CC Country Kitchen and Craft Fair is Saturday, October 17. NOW IS THE TIME to start making jams, jellies, pickles and preserves for our fall fundraiser. We have some mason jars available if you need them. If you need more, Linda Emptage will work with you to get jars. Donations of mason jars are gratefully accepted. Please see Linda.**

9.. **Support for the LFP** - Please keep in mind that we continue to stock the Little Free Pantry with non-perishable items throughout the year. **It would be helpful if each of us could bring one item Sunday morning to leave in the bin at the back of the church. We are in need of laundry and dish soap, if you're able to provide – thanks so much!**



10. **Caring for our Neighbours** It has been suggested that if we notice someone from the congregation who has not been attending for a time, that we contact them, or let the church office know so that a pastoral call can be made. Similarly, please let Fr. Brendon know if the name of someone should be added to those we pray for each week.

11. **PASTORAL CARE:** **For urgent care, please contact the Rev. Brendon Bedford at brendonbedford@diohuron.org or 226-974-5060.**

For all other concerns, questions, or ministries, please contact the office office@christchurchanglican.ca or 519-538-1330.

Office hours are: Tuesdays, Wednesdays and Thursdays, 9:00am to 2:00pm.

Contact Info for 2026

The Rev. Brendon Bedford Priest & Rector	226-974-5060	brendonbedford@diohuron.org
The Rev. Kevin Bothwell Honorary Assistant Priest	905-933-1032	kevinbothwell@diohuron.org
Bill Alcock, Churchwarden	604-833-9025	williamja@icloud.com
Garry Minielly, Churchwarden	416-931-0535	dgminielly@gmail.com
Toni Bothwell, Deputy Warden	514-229-2044	TABothwell@gmail.com
Gail Latour, Deputy Warden	226-662-0227	glatour1@rogers.com
Office Administrator	519-538-1330	office@christchurchanglican.ca
Church Website		www.christchurchanglican.ca

COMMUNITY ANNOUNCEMENTS

Municipality of Meaford Invites Residents to Share Their Stories for 25th Anniversary Documentary. [See link here.](#)

What's Blooming at Christ Church, July 8th, 2026

Spiraea japonica 'Little Princess' - is covered in bloom in Christ's Labyrinth, attracting many bees. Spiraea is a genus of about 80 to 100 species of shrubs which are in the Rose (Rosaceae) family. They are native to the northern hemisphere, with most having origins in eastern Asia. The genus name comes from the Greek word 'speira' meaning wreath which is in reference to the showy clusters seen on most plants in the genus. Spiraea plants are hardy, deciduous shrubs. The many tiny flowers are clustered together. These showy clusters of dense flowers make them great for gardens, with some species blooming in spring and others in mid-summer. They grow pretty much anywhere in various soil types. They prefer full sun, for maximum flowering.

They can be grown individually, in groups as they are in Christ's Labyrinth, or as a low flowering hedge.

Interestingly, acetylsalicylic acid was first isolated from *Filipendula ulmaria*, a species at the time classified in the genus *Spiraea*. The word "aspirin" was coined by adding a- (for acetylation) to spirin, from the German *Spirsäure*, a reference to *Spiraea*. Native Americans apparently knew this as many had various medicinal uses for native species. *Spiraea betulifolia* was used for abdominal pain and made into a tea. The Blackfoot used *Spiraea splendens* root to treat anemia and venereal conditions. Many Native Americans used *Spiraea douglasii* to make brooms.



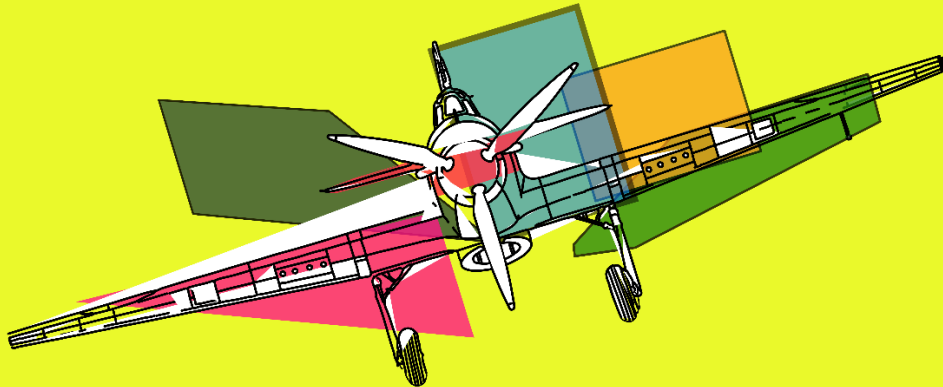
Spiraea japonica 'Gold Flame' - Gold Flame Spiraea is another variety of Spiraea growing in the Labyrinth. A dense, upright mounded shrub with attractive bronze-tinged new growth in spring, that matures to a soft yellow-green and develops into a brilliant coppery orange in the fall. Panicles of rosy red flowers rise above the foliage in summer, creating a dynamic



contrast. Good heat tolerance. This is a compact, mounded cultivar that grows to 3-4' tall with a somewhat irregular habit. Rose pink flowers in flattened corymbs (to 4-6" across) appear in late spring to early summer. This cultivar was formerly known as *Spiraea x bumalda* 'Goldflame.' It can be found in most garden centres as it is popular for use in many residential, commercial and municipal landscapes.

Plants of the Bible; "I am a rose of Sharon, a lily of the valleys. As a lily among brambles, so is my love among maidens." *Song of Solomon 2:1-2*. Rose of Sharon (*Hibiscus syriacus*) is a hibiscus plant prized for its lush, green leaves and vibrant flowers that bloom in summer and fall. It can spread by seed and in some cases may become invasive.

Art in thePews!



**Meaning increases
on closer inspection!**

**Thurs Aug 13th, 3-7 pm
Christ Church Anglican
34 Boucher St E, Meaford**

**GUM
gallery**