



SPIRITUAL PROGRESS | PART 2

DISCIPLE MAKER





25/05/2014



God uses the Wall to deepen our
Spiritual Progress



“God whispers to us in our pleasures, speaks in our conscience, but shouts in our pains: it is His megaphone to rouse a deaf world.”

C. S. Lewis, *The Problem of Pain*.

THE SIX STAGES OF THE CRITICAL JOURNEY

Janet O. Hagberg and Robert A. Guelich



1

RECOGNITION
OF GOD



2

LIFE OF
DISCIPLESHIP



3

PRODUCTIVE
LIFE



4

JOURNEY
INWARD
(THE WALL)



5

JOURNEY
OUTWARD



6

LIFE OF
LOVE



1

RECOGNITION
OF GOD



We become aware of our need for God and accept His invitation to follow Jesus.

2

LIFE OF
DISCIPLESHIP



3

PRODUCTIVE
LIFE



4

JOURNEY
INWARD
(THE WALL)



5

JOURNEY
OUTWARD



6

LIFE OF
LOVE



1

**RECOGNITION
OF GOD**



We become aware of our need for God and accept His invitation to follow Jesus.

2

**LIFE OF
DISCIPLESHIP**



We learn how to follow Jesus by forming spiritual habits and engagement with a Christian community.

3

**PRODUCTIVE
LIFE**



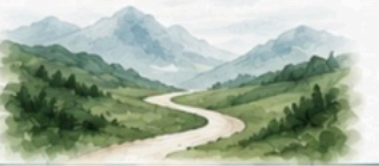
4

**JOURNEY
INWARD
(THE WALL)**



5

**JOURNEY
OUTWARD**



6

**LIFE OF
LOVE**



1

RECOGNITION OF GOD



We become aware of our need for God and accept His invitation to follow Jesus.

2

LIFE OF DISCIPLESHIP



We learn how to follow Jesus by forming spiritual habits and engagement with a Christian community.

3

PRODUCTIVE LIFE



We actively serving God and others with our unique gifts and skills. The “doing” stage.

4

JOURNEY INWARD (THE WALL)



5

JOURNEY OUTWARD



6

LIFE OF LOVE



1

RECOGNITION OF GOD



We become aware of our need for God and accept His invitation to follow Jesus.

2

LIFE OF DISCIPLESHIP



We learn how to follow Jesus by forming spiritual habits and engagement with a Christian community.

3

PRODUCTIVE LIFE



We actively serving God and others with our unique gifts and skills. The “doing” stage.

4

JOURNEY INWARD (THE WALL)



God brings us to a Wall that takes us on an intense journey into the depths of God and our own heart.

5

JOURNEY OUTWARD



6

LIFE OF LOVE



1

RECOGNITION OF GOD



We become aware of our need for God and accept His invitation to follow Jesus.

2

LIFE OF DISCIPLESHIP



We learn how to follow Jesus by forming spiritual habits and engagement with a Christian community.

3

PRODUCTIVE LIFE



We actively serving God and others with our unique gifts and skills. The “doing” stage.

4

JOURNEY INWARD (THE WALL)



God brings us to a Wall that takes us on an intense journey into the depths of God and our own heart.

5

JOURNEY OUTWARD



We again move outward to “do” for God but now we are humble, broken and profoundly reliant on God’s love.

6

LIFE OF LOVE



1

RECOGNITION OF GOD



We become aware of our need for God and accept His invitation to follow Jesus.

2

LIFE OF DISCIPLESHIP



We learn how to follow Jesus by forming spiritual habits and engagement with a Christian community.

3

PRODUCTIVE LIFE



We actively serving God and others with our unique gifts and skills. The “doing” stage.

4

JOURNEY INWARD (THE WALL)



God brings us to a Wall that takes us on an intense journey into the depths of God and our own heart.

5

JOURNEY OUTWARD



We again move outward to “do” for God but now we are humble, broken and profoundly reliant on God’s love.

6

LIFE OF LOVE



We have been transformed into love by God’s continued work on us. Our life is marked by deep union with Jesus and unconditional love for others.

DAVID THE GIANT KILLER

1 SAMUEL 16-17



DAVID THE FUGITIVE

1 SAMUEL 18-31



DAVID THE KING OF ISRAEL

2 SAMUEL 1-10



The Cave of Adullam

So David left Gath and escaped to the cave of Adullam. Soon his brothers and all his other relatives joined him there. ² Then others began coming—men who were in trouble or in debt or who were just discontented—until David was the captain of about 400 men.

1 Samuel 22:1–2

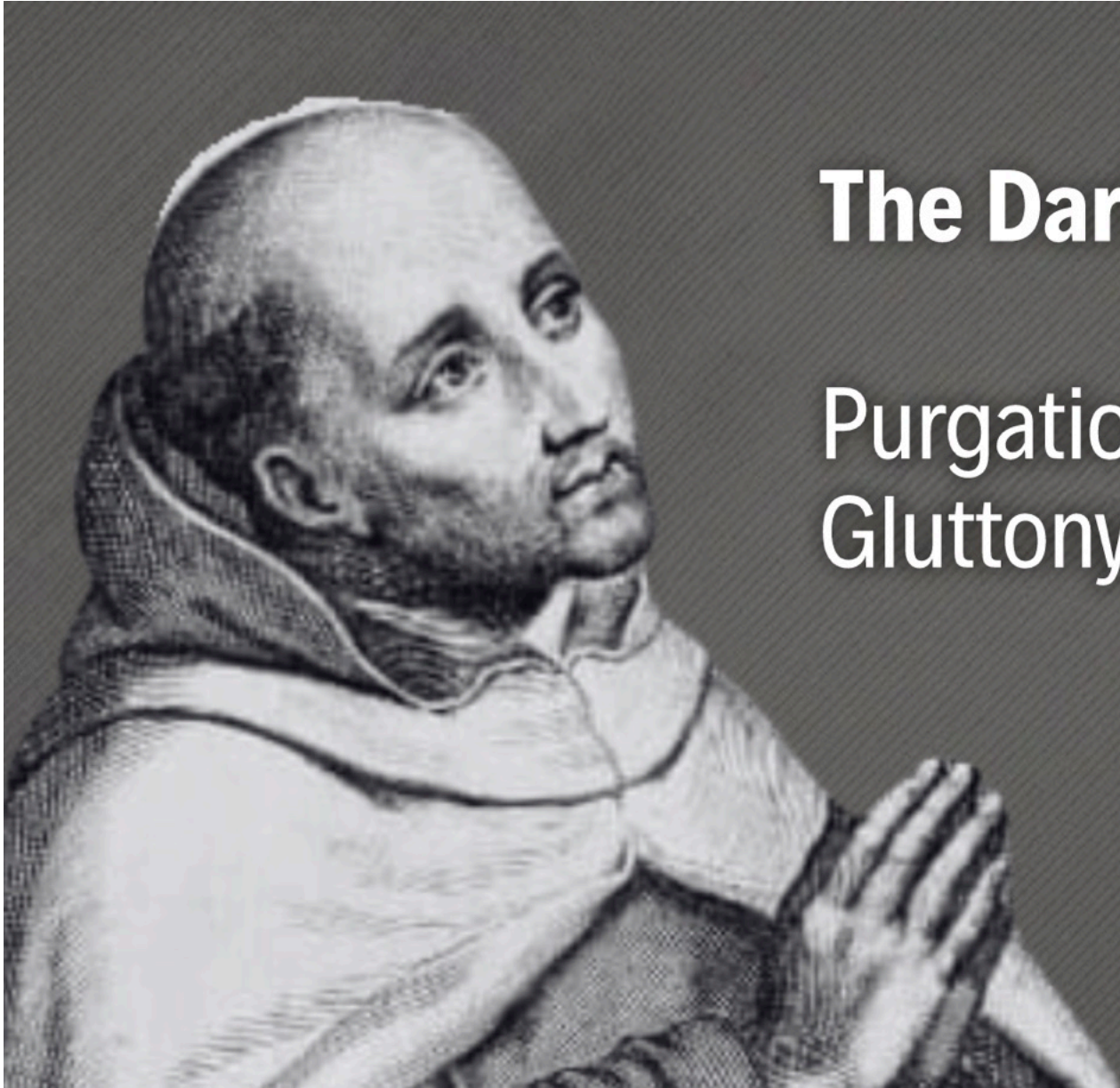


God uses the Wall to deepen our
Spiritual Progress



“The Wall is a season in which God dismantles the false ways we have learned to relate to Him, ourselves, and others, so that we can experience deeper transformation and intimacy with God.”

Peter Scazzero, Emotionally Healthy Spirituality



The Dark night of the soul

Purgation: Pride, Greed, Lust,
Gluttony, Anger, Envy, Sloth

ST JOHN OF THE CROSS

1542-1591

1

RECOGNITION OF GOD



We become aware of our need for God and accept His invitation to follow Jesus.

2

LIFE OF DISCIPLESHIP



We learn how to follow Jesus by forming spiritual habits and engagement with a Christian community.

3

PRODUCTIVE LIFE



We actively serving God and others with our unique gifts and skills. The “doing” stage.

4

JOURNEY INWARD (THE WALL)



God brings us to a Wall that takes us on an intense journey into the depths of God and our own heart.

5

JOURNEY OUTWARD



We again move outward to “do” for God but now we are humble, broken and profoundly reliant on God’s love.

6

LIFE OF LOVE



We have been transformed into love by God’s continued work on us. Our life is marked by deep union with Jesus and unconditional love for others.



The Wall – Two options:

Go out

or

Go through

³ At the place where the road passes some sheepfolds, Saul went into a cave to relieve himself. But as it happened, David and his men were hiding farther back in that very cave! ⁴ “Now’s your opportunity!” David’s men whispered to him. “Today the Lord is telling you, ‘I will certainly put your enemy into your power, to do with as you wish.’ ” So David crept forward and cut off a piece of the hem of Saul’s robe. ⁵ But then David’s conscience began bothering him because he had cut Saul’s robe.

1 Samuel 24:3–7

⁶ He said to his men, “The Lord forbid that I should do this to my lord the king. I shouldn’t attack the Lord’s anointed one, for the Lord himself has chosen him.”
⁷ So David restrained his men and did not let them kill Saul. After Saul had left the cave and gone on his way,

1 Samuel 24:3–7



The Wall – Two options:

Go out

or

Go through

THE SIX STAGES OF THE CRITICAL JOURNEY

Janet O. Hagberg and Robert A. Guelich





The Prayer of Incompetence

'God, I can't _____ but you can _____.'



DISCUSSION QUESTIONS:

1. Review the 6 stages of the Critical Journey together. Which stage are you at and why?
2. The Wall is an extended trial that God uses to invite us to an inward journey. How did Ps Caleb connect this concept to David and the Cave of Adullam? (1 Sam 22)
3. Have you or are you experiencing a Wall in your spiritual progress? What did it take to go through the Wall rather than go out and abort God's plans?