

Trendings



June 17, 2026

Growing Together in Christ to Love and Serve All People

This is a 2-week edition of Trendings!

Prayer of the Week:

Holy One,
Do not let the weight of this world
jeopardize my joy.
Do not let the woes of this world
compromise my compassion.
Do not let the want of this world
hinder my hope.
Do not let the worries of this world
fetter my faith
Let me, from my joys,
find compassion;
from my compassion, find hope;
and from my hope, foster faith,
for the sake of your love.
Amen.

Bishop Deon K. Johnson, Episcopal Diocese of Missouri

Ruth Miller's Memorial service is Saturday, June 20 at 11:00 AM.

Upcoming Greeters and Coffee Hosts:

June 21: Joyce and John Arnold, Greeters; Teresa Lutterman, Coffee host

June 28: Diane & Andy Hogle, Greeters; Ice Cream Sundae Sunday! (scoopers!)

Contact Sherry (sherry@salc.church) to be a Sunday greeter or to Host coffee hour.

Sign up to provide flowers on the Flower Chart in the Narthex.

***The office will be CLOSED Thursday, June 18th
for the Juneteenth holiday and
Thursday, July 2nd for the Fourth of July holiday.
Reminder: the office is closed every Friday!***

Worship is at 10:00 am on Sundays, both in-person and via livestream.

Livestream: Visit salc.church/media to access the bulletin and livestream link on YouTube. If you have a Google account, we invite you to offer a greeting or comment in the chat window.

Sunday, June 21

10:00 AM Worship

11:00 AM Fellowship Hour

Sunday, June 28 – Sundae Sunday!

10:00 AM Worship

11:00 AM Fellowship Hour – Ice cream sundaes!

Worship Texts for June 21

Jeremiah 20:7-13 and Matthew 10:24-39

Worship Texts for June 28

Jeremiah 28:5-9 and Matthew 10:40-42

Tuesday Morning Men: Every Tuesday at 8:30 AM, this group meets for discussion and prayer via ZOOM.

Summer Evening Worship:



Our first SUNDAY EVENING WORSHIP will be July 5th!!

There will be NO 10:00 AM WORSHIP JULY 5th!!

Because of the long summer daylight hours in this part of the world, this will still be a safe driving time to and from church for you.

The order of worship will remain the same, with hymns, liturgy, sermon, and Holy Communion.

We are excited to do this, and we look forward to hearing your feedback at the end of the summer after we've had a chance to try this out.

Calendar note: The ELCC Worship in the Park will be **August 16, 2026** at **10:00 AM** at **Ebright Park** in Sammamish Hills - 1317 212th Ave SE, Sammamish, WA 98075. **There will be NO worship service onsite at SALC that day! See you at the park!**

Book Study with Pastor Lara:

There will be two opportunities for discussion each week. On **Tuesdays**, there will be a **hybrid option from 10:00am - 11:30am** either **in-person** or **via Zoom**. ([Tuesday Zoom Link](#)) On **Wednesdays**, there will be an **online only option from 7:00pm - 8:30pm**. ([Wednesday Zoom link](#)). The Zoom links are also accessible from our website on the **Book Study event page**.

We will follow this schedule for the discussions:

- June 23 (Tu), 24 (W) - Chapters 7 and 8
- June 30 (Tu), July 1 (W) - Chapters 9 and 10

Please contact Pastor Lara (pastor@salc.church) if you have any questions.



Sundae Sunday Scoopers Needed

Six strong-armed volunteers needed to scoop ice cream on June 28th .

Our traditional "Sundae Sunday" will be held after the 10 a.m. worship service on June 28th . We've moved the date to the week before Fourth of July weekend because of our new summer evening worship service the first Sunday in July,

August and September. *Scooping is easy*. We provide the ice cream and scoops and you dish it up. We set out a variety of toppings so people can make their own sundaes. To volunteer, email Fellowship Coordinator Sherry Grindeland at sherry@salc.church.

Have you seen all the cool **PRIDE** signs and **PRIDE SWAG** supplied by our **JEDI** (Justice, Equality, Diversity and Inclusion) Committee??

Be sure to grab YOUR bracelets, flag, pins ... all the pride!

Thanks, team!



Youth News:

Lantern Hill Mission Trip

We are excitedly preparing for our trip to Lantern Hill next week! We will be in Mexico June 26-July 2. Our group of seven participants is from three different churches and includes both youth and adult participants. We ask that you pray for our group as we travel, work, and learn during our time in Mexico. *Our participants are: Becca Piel, Jean Wahlstrom, Doug Johnson, Lucas Knapp (Sammamish Hills), Pastor Krista Johnson (Mt. Si), Erica Haycox (Mt. Si), and Declan Haycox (Mt. Si).* We are excited to share stories of our time after we return!

VBS Snack Donations

Sammamish Hills, Saint Andrew's, Mt. Si, and St. Luke's are collecting food donations for snacks for VBS. Each congregation has a list of food items to collect which will be shared among the three weeks of VBS. Saint Andrew's has been tasked to collect:

- **8 boxes of 12ct. Mandarin Orange Fruit Cups**
- **2 boxes of Family Size, GM Cheerios, 18oz boxes**
- **3 bags of Family Size, Plain M&Ms, 18oz bags**
- **2 boxes - Large Goldfish Crackers - 27oz**

Please sign-up for any donation items you want to purchase. Please bring all donations to Saint Andrew's by July 5th. There is a sign-up sheet on the Narthex bulletin board, or you can contact Doug Johnson at doug@salc.church with your donation.

Health and Wholeness:

There is a critical need for blood – and that doesn't take a vacation. Please use the QR code and sign up for the July 23rd opportunity to save lives!

The Bloodmobile will be in our parking lot (it's got A/C, it's cozy and it gets the job done! AND, you get snacks when you're done) **Our goal is to have 20+ participants!!**

How can YOU help? Sign up! Share the QR Code with friends and family! Every donation makes a difference.

july
Blood Drive
Thursday, July 23rd
Appointments available
9:00 AM - 3:00 PM

Bloodworks Northwest

Use this QR code to schedule!!

Bloodworks NW will have the Blood Mobile in our parking lot! Let's fill all 30 slots!!

News from Lantern Hill: Lasting Impact

It's been a full spring at Lantern Hill! March, April, and May kept us busy as we welcomed two college groups from North and South Carolina. Out of that, we're thrilled to have gained a summer volunteer and even more exciting, we're exploring a potential partnership with a church. That's exactly what we hope for: long-term relationships, because true change comes from ongoing investment in one another.

Meanwhile, our students have continued working hard at the education center and many of them are top in their class and winning the end of year awards!

We've also made a big step forward by hiring a new teacher for the younger children: Julisa! Up until now, Alma has been both teaching and directing the entire program. As we grow, Alma will focus on expanding our impact and raising donations within Mexico, while Julisa steps in to support the kids directly.

Fun fact: Julisa is married to Walfre, one of our teachers who is designing the plans for our new building as part of his architecture studies! When we talk about building community, it's clear it goes far beyond just the immediate work, this is real, lasting impact.

We've also gained momentum with our Sponsor a Student program, and we are continually humbled by how quickly our community responds. Whether it's the sad loss of an alumni or raising funds for an assistant for one of our students with autism, you always show up. And we are so grateful!



As we move into summer, we're preparing to welcome volunteer groups from at least six different states across the U.S. And if you've been considering joining us, there are still a few spots left for our Friends and Family Week, July 27th through the 31st.

We can't wait for the season ahead!

We're also thrilled to share that a couple will be joining us for six months of service!

We'll tell you all about it in the next email, so stay tuned for more on this exciting chapter!

Keeping the Lantern Lit,

Abby Williams

www.friendsoflanternhill.org

Breaking the cycle of poverty through education, nutrition and care.

Corner of Blessing Collection for June



For June, Hopelink has asked us to help supply them for their End Summer Hunger program. They have asked us to help them stock up on foods that are kid friendly and will provide these children with adequate nutrition when they are not getting fed at school.

For June we will be collecting these items:

- Healthy Cereal/Oats
- Nut/Seed Butters (almond, sunflower, peanut)
- Jelly (no glass jars)
- Snacks (trail mix, crackers, fruit bars, seaweed)
- Applesauce/Fruit Cups
- Ready to Eat Meals (Bumble Bee Snack on the Run, Star Kist Smart Bowls, Campbell's Snacking soup, BeanVivo pouches, etc.)



PORCHLIGHT NEEDS OUR HELP!

The Porchlight Rotating Shelter houses 20 to 25 men each month at different churches from 6:00 pm to 7:30 am. First Congregational Church in downtown Bellevue will be the host church in June. They also host in November and they are in need of people to provide meals.

Contact Cheryl Jurrus by phone or email (cheryljurrus74@gmail.com) or Nancy Davis (davisnancyr@comcast.net) to volunteer to help. Many dates in June are available. Donations of money to buy meals are welcome. Designate your donation for *Porchlight Rotating Shelter*.

The men at the Rotating Shelter are required to "be clean and sober", sign up for chores, and follow some other rules and requirements. Many of them are employed, and some of them are able to move into housing with the help of their case manager. Please pray for them.

"Be hospitable to one another without complaining. Like good stewards of the manifold grace of God, serve one another with whatever gift each of you has received." 1 Peter 4: 9-10



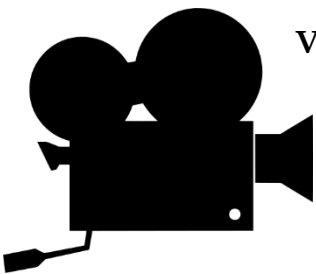
Wanna make Tamales for our Community? We need 8-10 volunteers to join us at the church **Saturday, July 11 at 10 AM** to make and package tamales for our Latin American neighbors in need. All the supplies plus a culinary expert will be on hand. No experience necessary. Contact Beth Donahoe (Beth.donahoe@comcast.net.) to sign up or sign up on the sheet on the bulletin board in the Narthex.



Do you know what to do if you see ICE in your community?

Wednesday, June 24 at 7 PM Indivisible Eastside will be hosting a 1-hour basic class at Saint Andrew's to show you what to do if you happen to see immigration enforcement activity. It's like taking CPR training: you hope you'll never need it, but it's good to know what to do in case of emergency.

This training was developed by Indivisible Eastside, Seattle Indivisible and West Seattle Indivisible, with support from ACLU-WA and WAISN. Beth Donahoe will be serving as the trainer. You can sign up for the June 24 training [HERE](#). If you'd like to find training in other locations, visit the website [HERE](#). If you have any questions, please email Beth at Beth.donahoe@comcast.net.



Volunteers needed for Sunday video livestreaming! We'd love to have a few more volunteers to run the livestream video on Sunday mornings! It's fairly easy, and you don't have to be particularly good with computers. Ample training and instruction are provided. Please contact Facilities Manager Kurt Lutterman at kurt@salc.church to apply.

Christmas in July

It's Back!! Starting June 28th – July 26th you can grab a tag and make some summer wishes come true for children here and abroad! KidVantage supplies families with toys and games year round for birthdays and celebrations! Our friends at Lantern Hill are constructing a new building plus we can provide student support. So, get those elf hats on !!

Kid Vantage

- Duplo or mega blocks
- Board books
- Children's books (early readers or chapter books)
- Baby dolls for toddlers
- Board games that don't require batteries
- Princess dolls/18" dolls, with clothes if possible
- Beanie Babies
- Action Figures
- Squashmallows
- AAA and AA batteries

Lantern Hill

- \$10 - 10 meals for students
- \$15 - 1 bus pass for 1 week
- \$25 - 1 Student uniform
- \$25 - 225 gallons Fresh Drinking water
- \$50 - 130 concrete blocks
- \$75 - 200 square feet of standard ceramic tile
- \$100 - 14 bags cement
- \$100 - 3 weeks of electricity
- \$125 - 10-15 bags of stucco for exterior of building
- \$150 - 225 meters of electrical conduit
- \$200 - 1 Teacher salary per week
- \$250 - 12 bars of 12 feet rebar



There will be a box by the Christmas Tree marked 'Lantern Hill' to place your checks or cash. You can also donate online ([Give | Saint Andrew's Lutheran Church](#)) be sure to mark "Lantern Hill" in the memo box.

Hot town – summer in the city....

It's Summer!! Our local communities have a LOT of great free events happening! They are fun and free !! Plan a picnic with friends and family and support these community events!

Bellevue:

The Concert Truck: The Concert Truck is rolling into Bellevue. This concert hall on wheels brings the joy of chamber music right to you – perfect for families, first-time listeners, and chamber music lovers looking for a fun, relaxed way to experience live music. Free and open to the public. **Sunday, June 21 Bellevue Downtown Park, 4:00 PM; June 28, 11:00 AM - 12 PM, , Bellevue Botanical Gardens, 12001 Main Street.** Check out all their other locations and dates [HERE](#).

Live at Lunch: *The Live at Lunch Concert Series* returns to the heart of Downtown Bellevue this summer with more music, community, and midday energy than ever before. Featuring a lineup of more than 50 regional musicians performing across a variety of public gathering spaces, the series transforms the lunch hour into a free live music experience every weekday from 12-1 p.m. Find the list of performers and locations [HERE](#).

Bellevue Arts Fair Weekend: July 24-26. Downtown. More information [HERE](#).

Movies in the Park! Check out the line up at Bellevue Downtown Park (July) and Crossroads Park (August) [HERE](#).

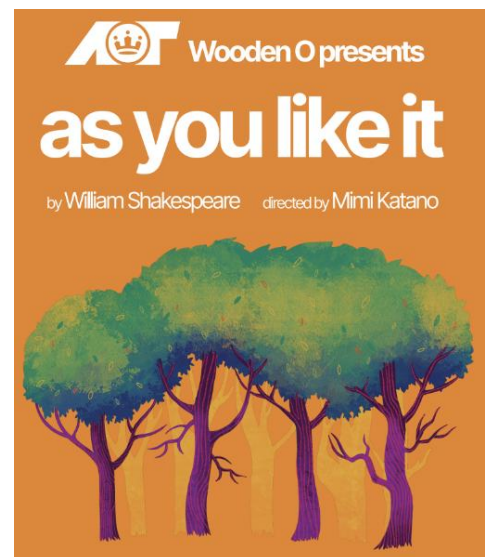
Issaquah:

Concerts on the Green: Every Tuesday, July-August. Find the line up and more information [HERE](#).

Various Parks:

Shakespeare in the Park.

Always a good time, Wooden O performs at Luther Burbank Park on Mercer Island, Klahanie Park in Issaquah, and the Issaquah Community Center throughout July and August. For all locations and dates – check them out [HERE](#).



ELCC (Eastside Lutheran Church Community) churches, the Synod and the ELCA:



The Eastside Lutheran Church Community (ELCC) are the ELCA churches on the eastside. WE have opportunity to share worship, resources, and events – separately and collectively. While we often share collaborative and in Be sure to check out the website [HERE](#).

An ELCC newsletter is in the works! Sign up to receive the links!

Newsletter opt-in instructions:

1. Go to the [ELCC website](#) and scroll to the bottom of the HOME page
2. View the Newsletter Signup section - add your email and press the SUBSCRIBE link
3. Now go to your email inbox and find the Tithe.ly email asking you to verify your email address, and then you are done!

A flyer for an event titled "IN GOD WE TRUST". The top half features a stylized American flag background. The title "IN GOD WE TRUST" is in large, bold letters, with "IN GOD" in blue and "WE TRUST" in red. Below the title is the subtitle "Faith in Action. Service in Unity." and a paragraph: "Join us for a meaningful morning of service as we come together in faith and love to bless our community." A dark blue banner indicates the event is on "FRIDAY | JUNE 27 | 9 AM - 11 AM". Below this are two main activities: "BULK FOOD BAGGING for Jewish Family Services" and "BRACELETS OF JOY for Birthday Dreams". Each activity has a small icon and a brief description. A central message says "WE HAVE ALL THE SUPPLIES. We just need helping hands and serving hearts." A dark blue banner at the bottom identifies the target audience as "SINGLE ADULTS 36+". The bottom left features a church icon and the text "THE CHURCH OF JESUS CHRIST OF LATTER-DAY SAINTS BELLEVUE SOUTH BUILDING 2808 148th Ave SE Bellevue, WA 98007". The bottom right has a QR code and the text "SIGN UP HERE! Scan the QR code to let us know you're coming." with arrows pointing to the QR code.

Interfaith Service Event for SINGLE ADULTS 36+ years old!
Our friends at the LDS congregation have organized this interfaith event for single adults. They have all the supplies – but please register to attend! You will meet neighbors and help Jewish Family Services food bank and supply JOY to “Birthday Dreams”.

Join Us Picnic in the Park

Conversation, Community, and Vitamin C

Park Map Location



Gather-King County

FRIDAY, JULY 17 | 5 PM - 7 PM
ROBINSWOOD PARK

Young Adults
18-35

Join us for conversation, outdoor games, community building, and joy.

Bring a snack to share or a outdoor game to play.

Beach Church at Lake Sammamish

Wednesdays, August 5, 12, 19, 6-7:30PM

We meet for potluck, grilled hotdogs, and smores; games and a swim; devotions and songs.

This is an intergenerational event for members and friends of Issaquah and Eastside churches.

Please bring a dish! Consider bringing your own table setting to reduce trash and recycle. And bring beach games, of course!

Directions: Drive West on E Lake Sammamish PKWY SE; just after Lake Sammamish Park Boat Loading Ramp Road, turn left on SE 44th St and drive to the Lakeshore.

www.oslcissaquah.org

www.eastidelutherancc.org

Volunteers needed: Shoppers for all dates. Can you help?

Email office@oslcissaquah.org or call 425-392-4169. Thank you!

Bring a Chair!

Calendar

Thursday, June 18

Office is closed

Friday, June 19

Office is closed - Juneteenth

Saturday, June 20

11:00 AM Ruth Miller Memorial Service

Sunday, June 21

10:00 AM Worship
11:00 AM Fellowship Hour
11:15 AM KnitWits

Monday, June 22

1:00 PM Staff Meeting
7:00 PM Outreach Committee, Online

Tuesday, June 23

8:30 AM Tuesday Morning Men
10:00 AM Pastor's Book Study, Hybrid
7:00 PM Building and Property Committee

Wednesday, June 24

7:00 PM JEDI Committee, Online
Pastor's Book Study, Online

Thursday, June 25

Friday, June 26

Office is closed.

Saturday, June 27

Sunday, June 28

10:00 AM Worship
11:00 AM Fellowship Hour

Monday, June 29

1:00 PM Staff Meeting

Tuesday, June 30

8:30 AM Tuesday Morning Men
10:00 AM Pastor's Book Study, Hybrid

Wednesday, July 1

7:00 PM Pastor's Book Study, Online

You can access our
weekly online calendar
HERE.

The Reverend Lara Forbes, Lead Pastor
pastor@SALC.church

The Reverend Timothy T. Weber,
Shared-Time Pastor
timwebertt@yahoo.com

Dr. Will Simpson,
Director of Music Ministries
will@SALC.church

Doug Johnson,
Director of Youth and Family Ministries
doug@SALC.church

Sherry Grindeland, Fellowship Coordinator
sherry@SALC.church

Kurt Lutterman, Facilities Manager
kurt@SALC.church

Kathy Fisher, Communications Director
kathy@SALC.church

Vanessa Wilkie, Handbell Choir Director

Elaine Koga, Choir Accompanist

Abby Kasper, Facilities Set-up

April Daniel, Records Administrator

Ann Thorpe, Sunday Church School Coordinator

Joan Tweten, Kitchen Team

SALC Family Social Media Accounts:



Find us on:

