

# Church Survey Results

# Agenda

- Recommendation
- Key Observations
- General Survey Data
- Specific Survey Results
- Review Recommendations
- Questions/Discussion

# Recommendation

The LUMC Church Council establish a committee that conducts research to provide options that meet the Lansing Community Care of Children need with some form of On-site Childcare.

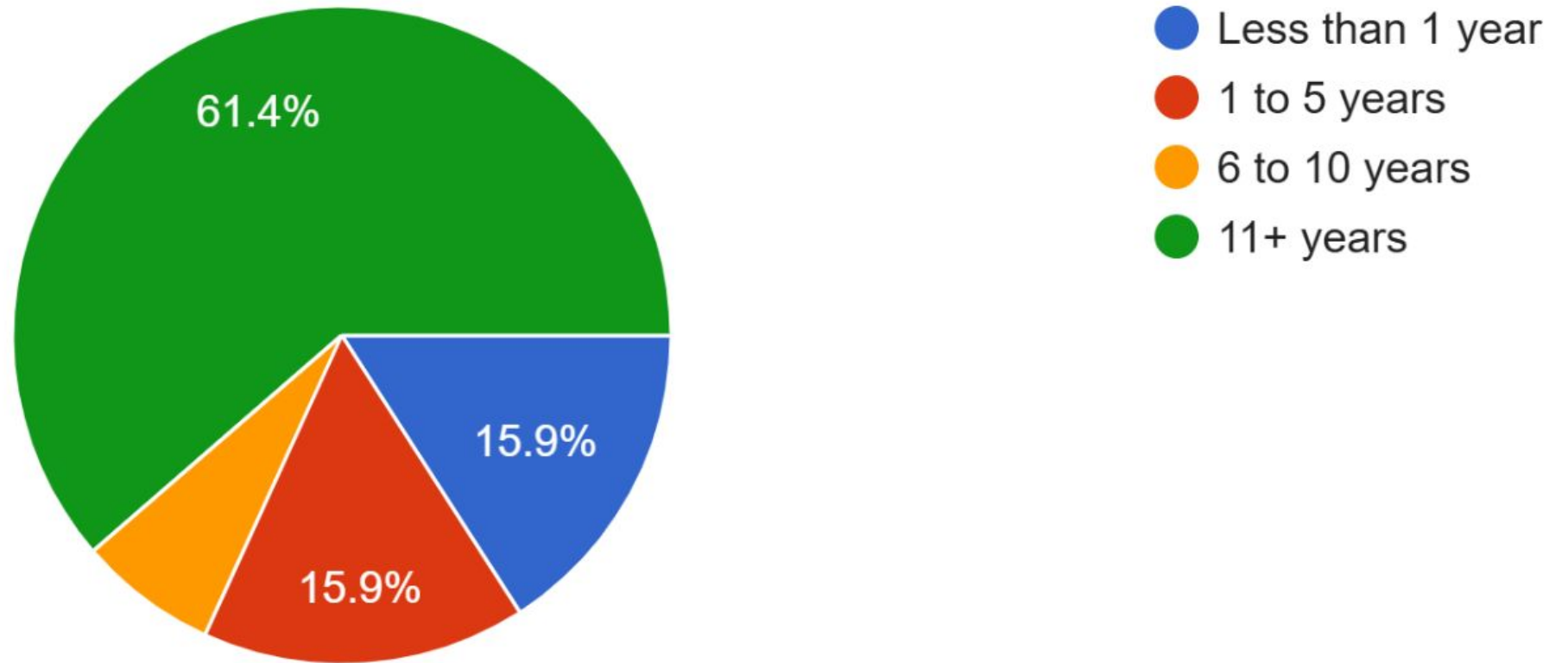
The Explorers Group will provide the Council with the names of those interested in assuming a leadership role on the committee as well as any and all information collected relating to Care of the Child during our research.

# Key Observations

- The Explorers Group identified an interest among LUMC members for a thrift store either on-site or off. This may provide a wanted service to the community however; we did not identify a need for affordable clothing and furniture or life transition assistance during our research. It is recommended that if the Council decides this a desired ministry, it begin a feasibility study.
- Providing pick-up and delivery services for groceries, food pantry items, and prescriptions was highly rated but that overall **transportation** needs were below **care of the child**. Additionally, this idea was developed during brainstorm sessions and not through the Group's research. If those church members who expressed interest in this service wished to pursue this as their own ministry, we would facilitate their initial efforts.
- The Group discovered many LUMC members want to know more about what is going on with the money that has been willed or gifted to LUMC; and that improved, general communication would be appreciated.

# How long have you been a part of Lansing United Methodist Church?

44 responses

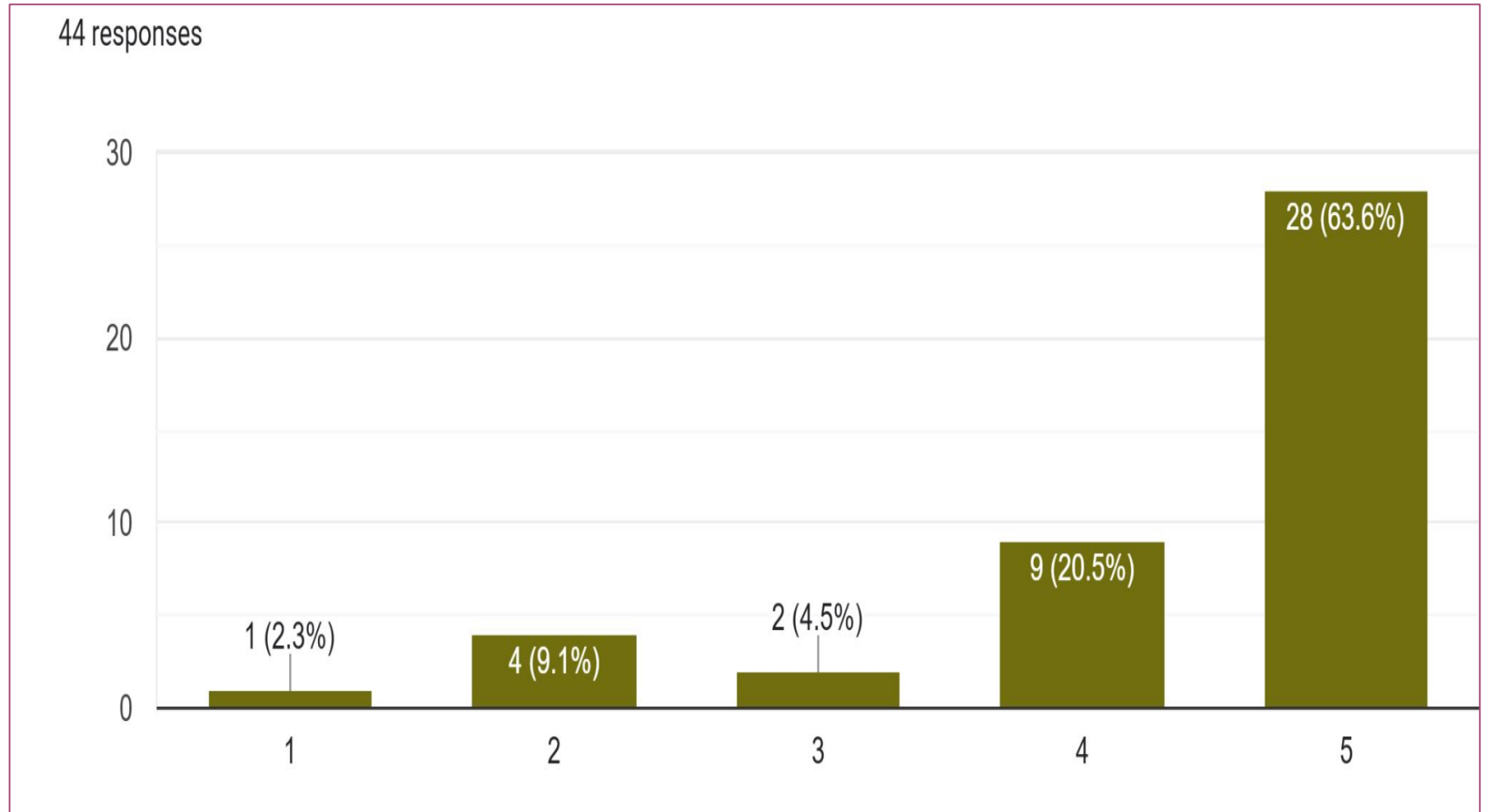


**Question 1:** On a scale of 1 to 5, how important do you think it is for our church to commit to help meeting one of the needs (Housing, Transportation, Care of Children) within our community?

- 1 Least Important
- 2 Somewhat Important
- 3 No Opinion
- 4 Important
- 5 Very Important

**84.1%**

**Of respondents  
see this as  
important!**

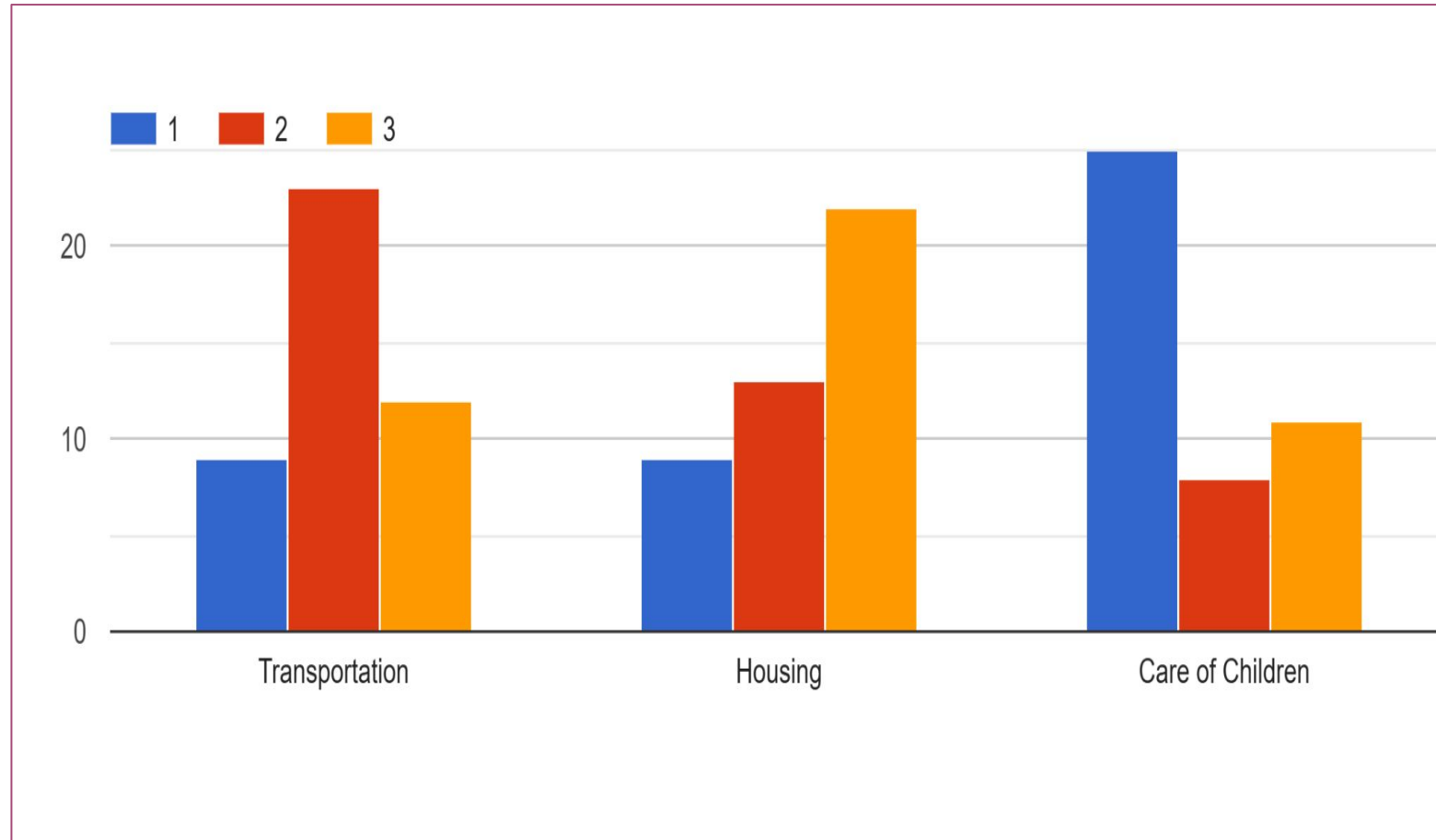


**Question 2:** What does the Lansing Community need most? Please rank order (1 to 3, with 1 being most needed) the needs below.

**#1: Care of Children (25)**

**#2: Transportation (23)**

**#3: Housing (22)**

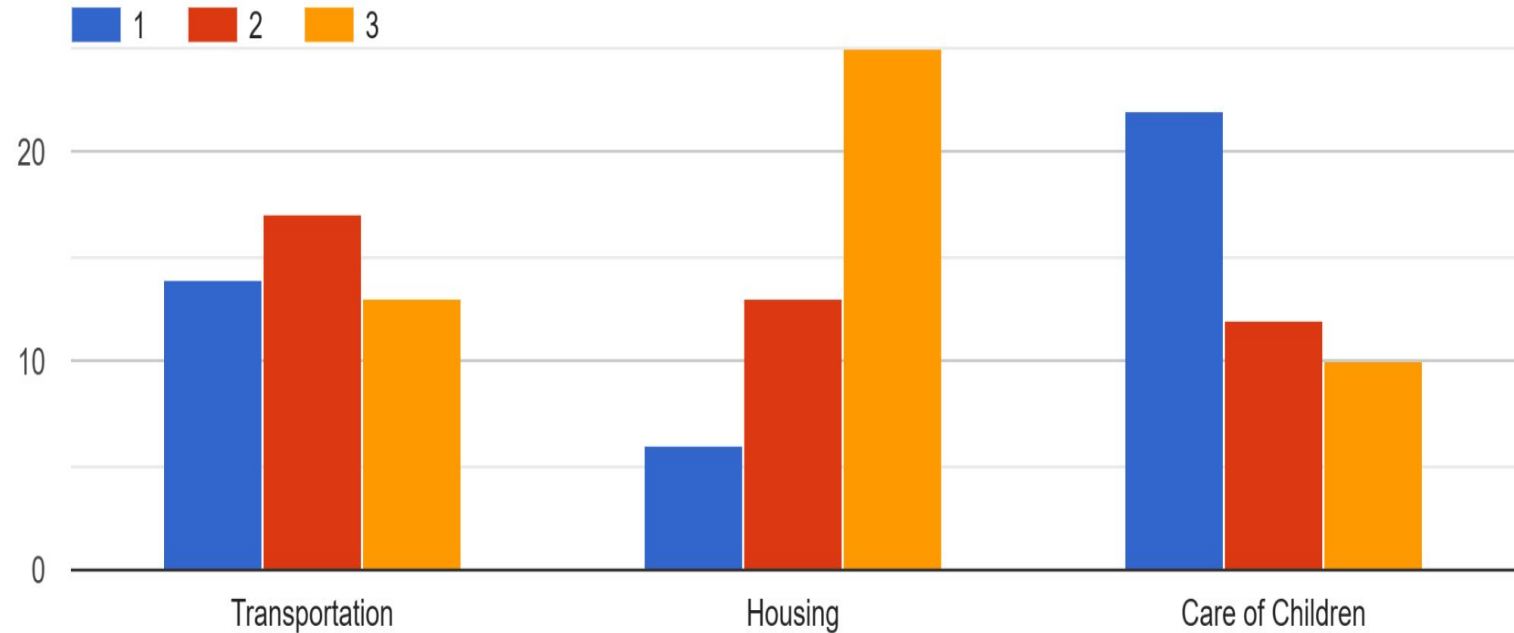


**Question 3:** Which need are you most passionate about helping to meet? Please rank order (1 to 3) the needs according to your level of passion in helping to meet them.

**#1: Care of Children (22)**

**#2: Transportation (17)**

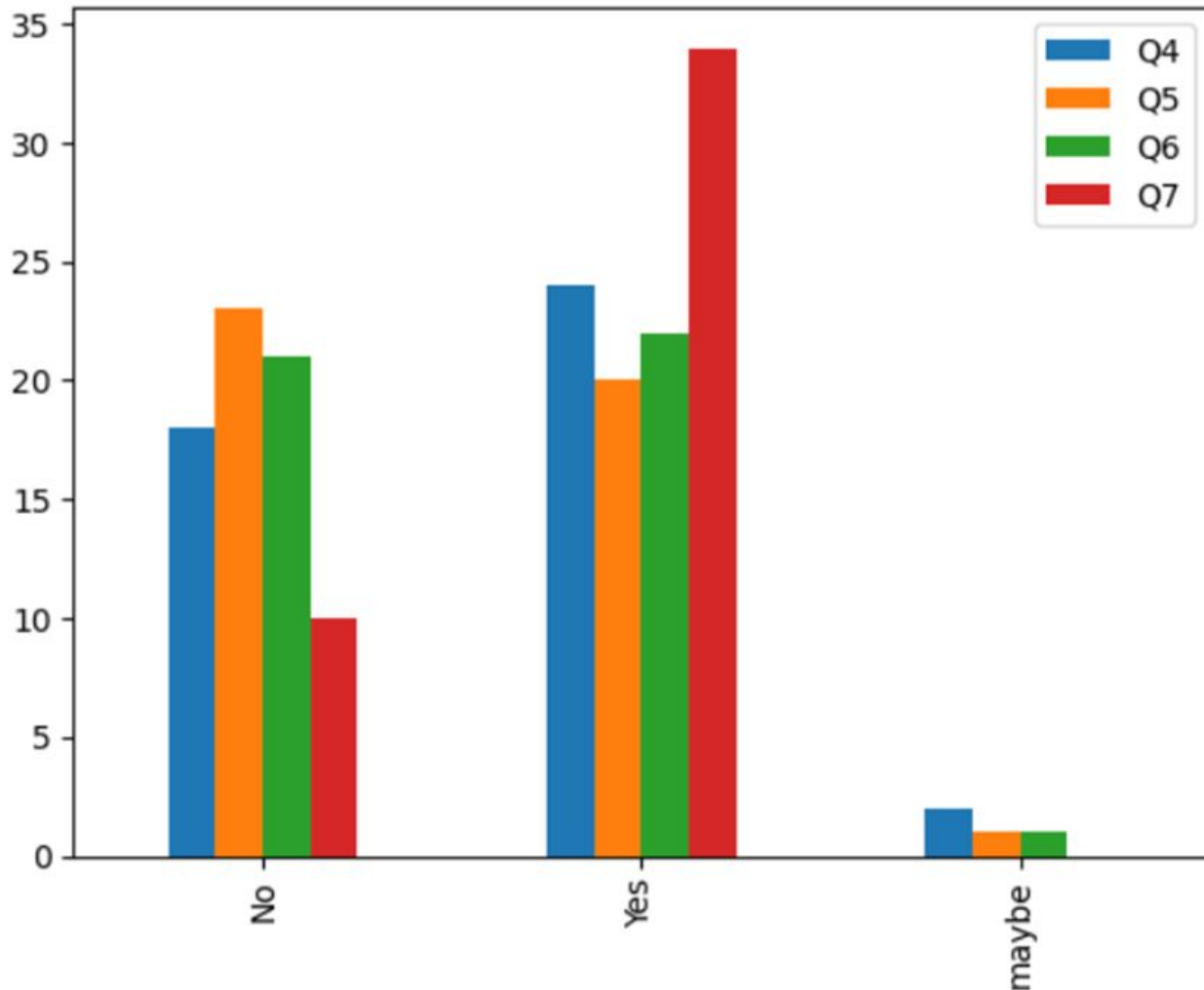
**#3: Housing (25)**



**Care of Children ranked 1 or 2: 34**

**Transportation ranked 1 or 2: 31**

# Analysis of Transportation



**Q4:** expand existing transportation services like Gadabout and FISH

55% Yes

41% No

5% Maybe

**Q5:** providing/coordinating volunteer drivers for deployment

45% Yes

52% No

2% Maybe

**Q6:** transports people the “first mile/last mile”

22% Yes

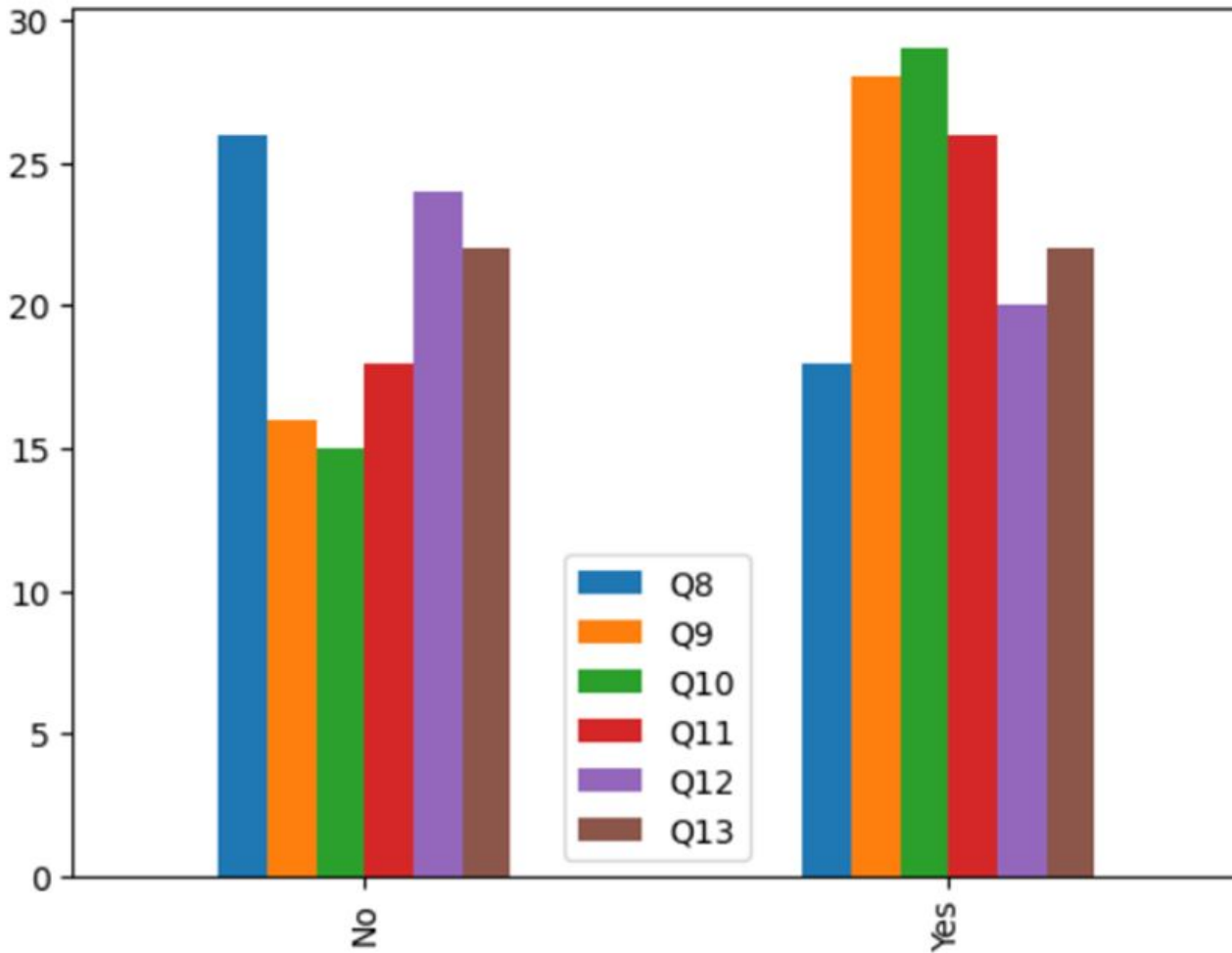
21% No

1% Maybe

**Q7:** pickup and delivery services for groceries, food pantry items, or prescriptions

77% Yes

# Analysis of Care of Children



**Q8:** expand summer Vacation Bible School

41% Yes,

59% No

**Q9:** developing an on-site childcare program

64% Yes,

36% No

**Q10:** provides food support to existing family daycare programs

64% Yes,

36% No

*A program already exists for this and is expanding.*

**Q11:** provides tutoring to school age kids

59% Yes

41% No