



TRANSFORMATION SURVEY 2025

Analysis Overview

ABOUT US

Fellowship in Discipleship (FIND) is a fellowship of Christian men who are serious about authentic discipleship. We challenge each other daily to believe the incredible news that God actually knows us, loves us, and wants to transform us into spiritual maturity.

Real men...real discipleship



MISSION

Transforming men through
Jesus Christ in authentic,
weekly fellowship in
discipleship.

Real men...real discipleship



FAITH & CORE VALUES



!! We are not a church. We are simply one extension of the church universal. We are not perfect. Not even close. We are broken individuals, in need of God's infinite grace through fellowship.



We currently have 317 men in 43 weekly small Groups representing 52 different churches in Houston.

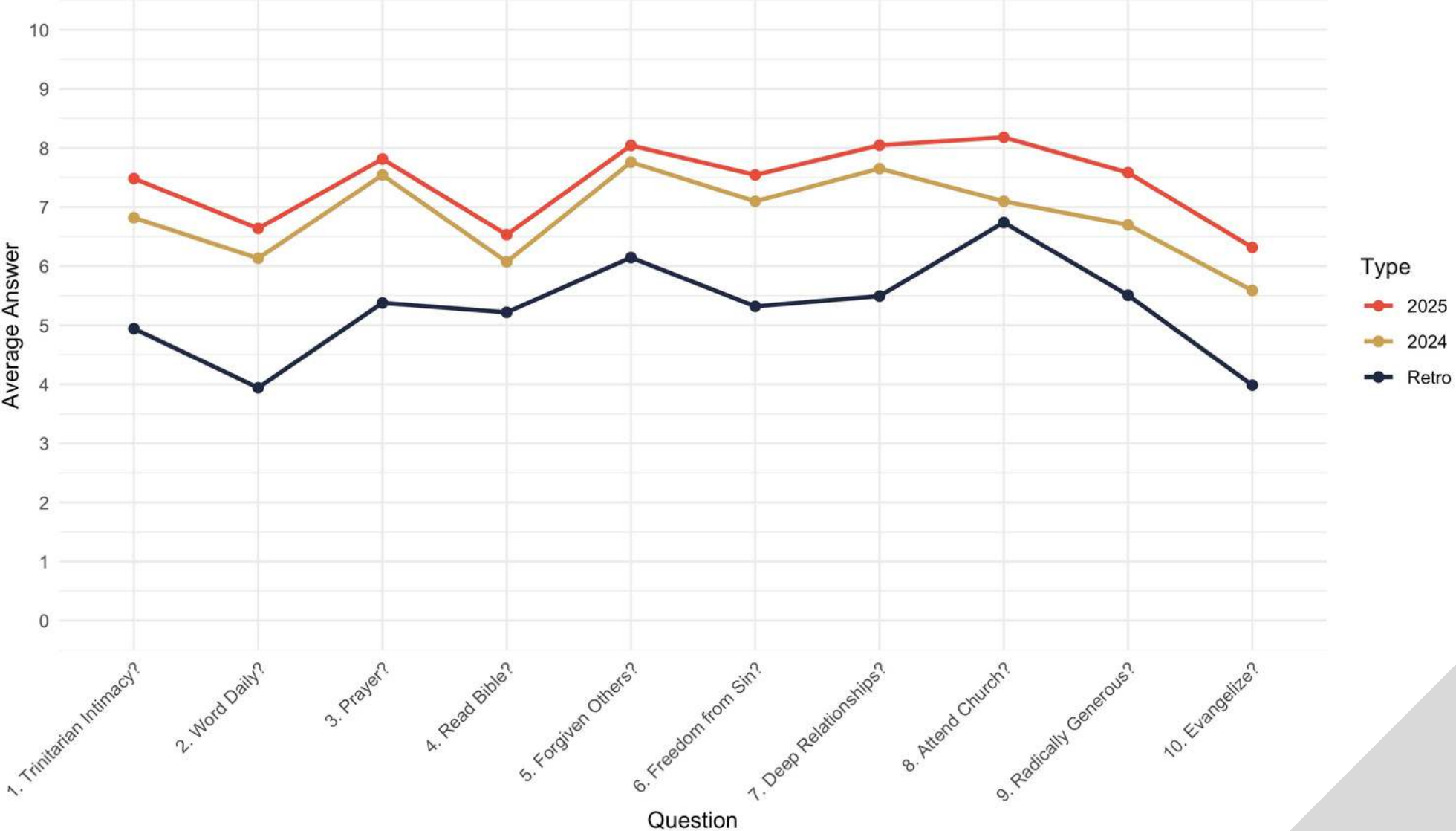


Each Group of at least 8 and no more than 10 men is formed through the design and timing of the Holy Spirit.

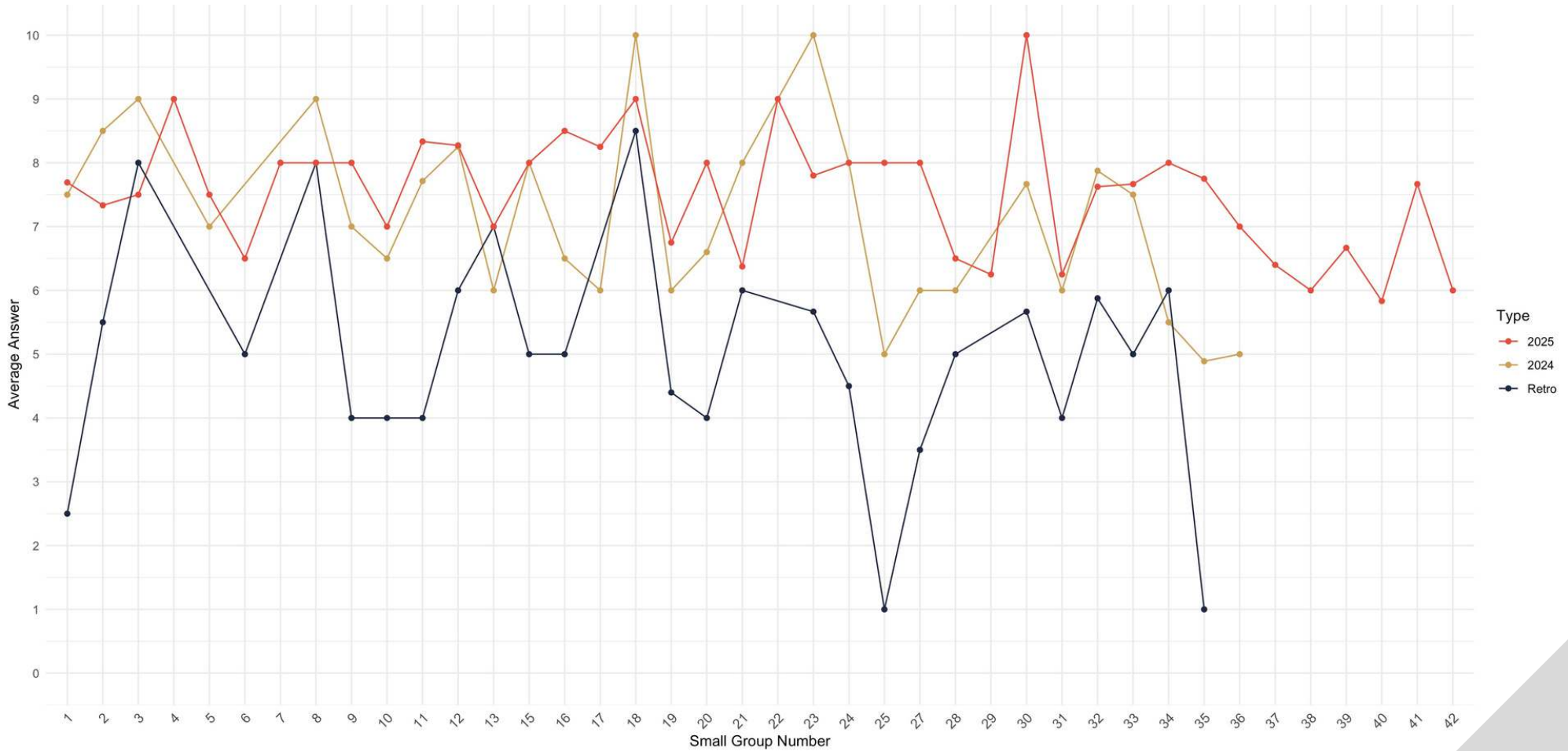


We strive to make a Holy Spirit filled impact on men, families, communities and churches.

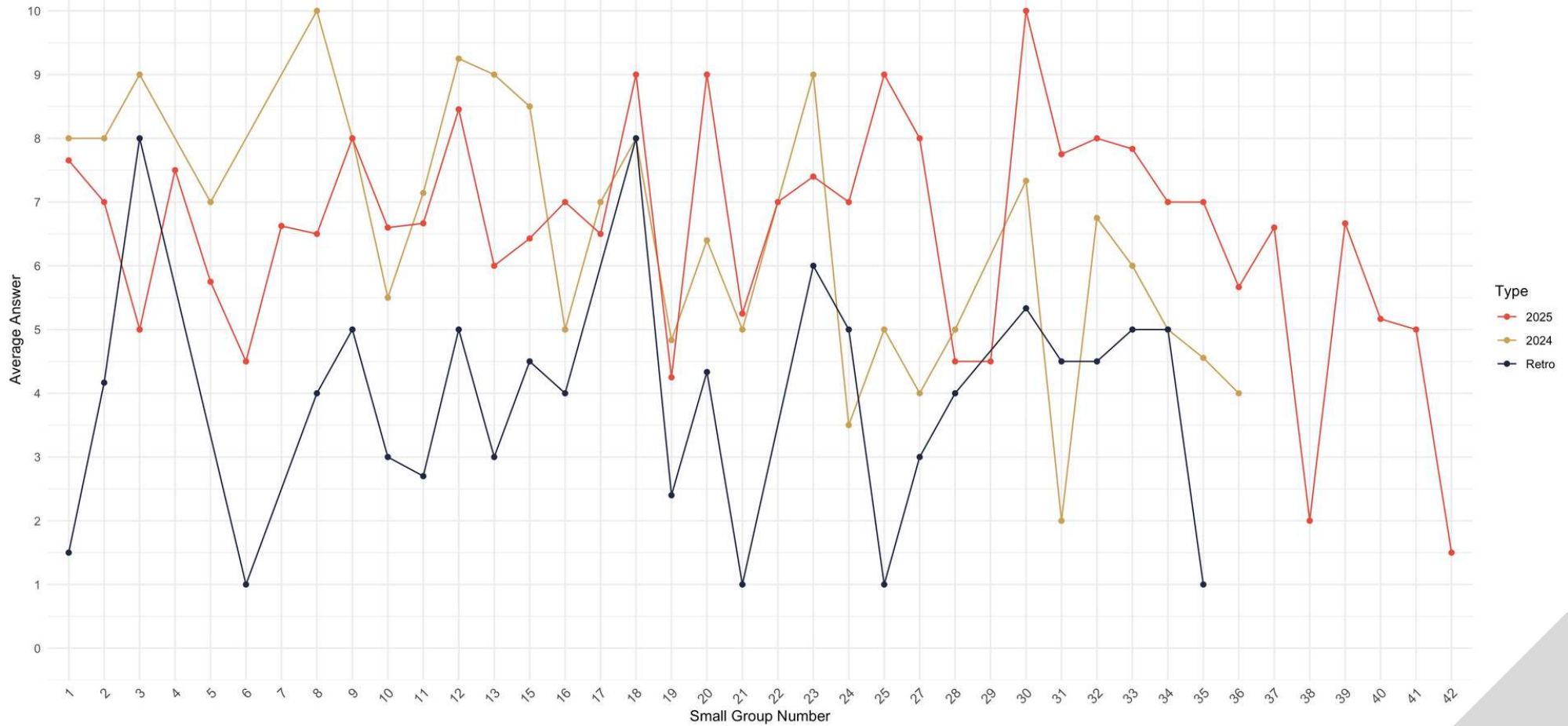
Average Answers by Question for 2025 vs 2024 vs Retro Data



How is your intimacy with our Father, Jesus Christ and the Holy Spirit?

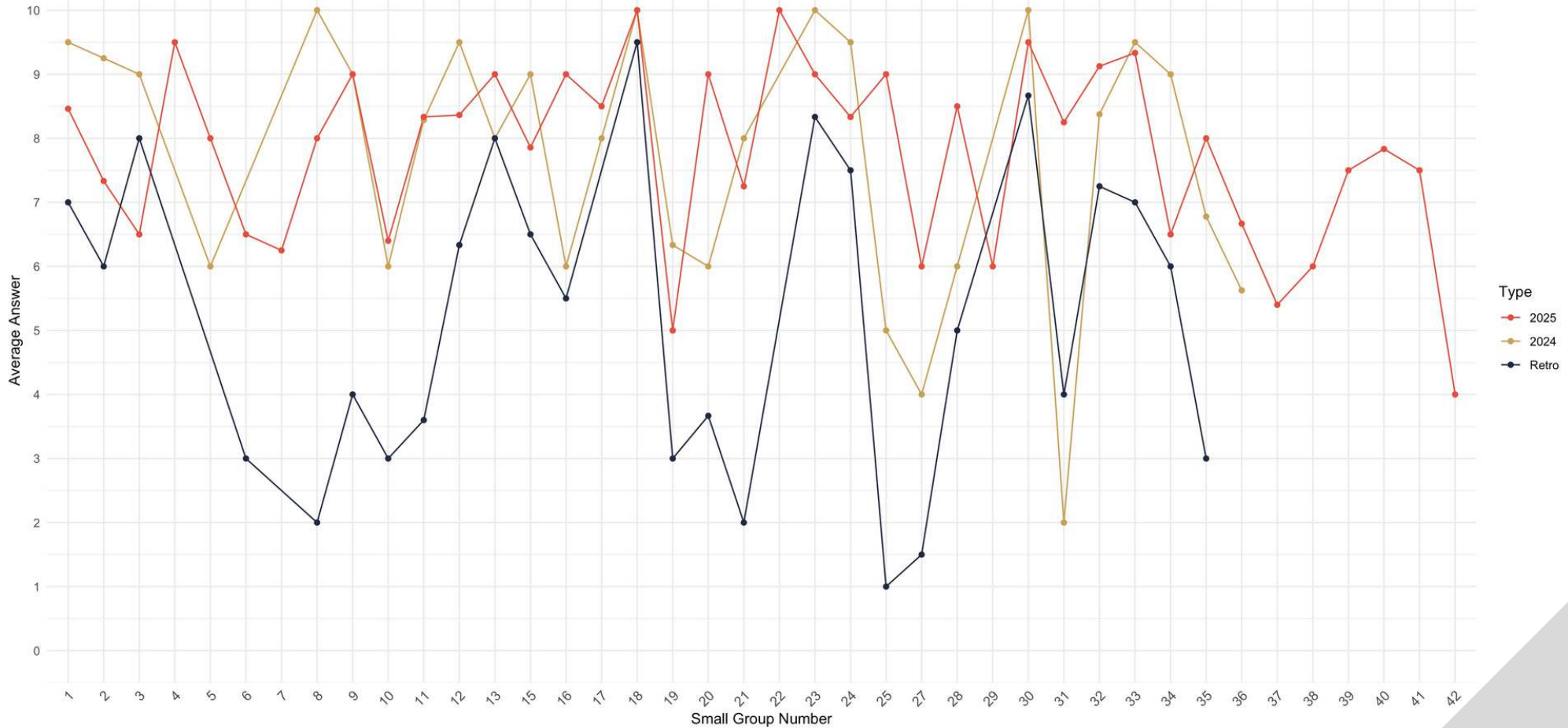


Are you in the word of God daily?

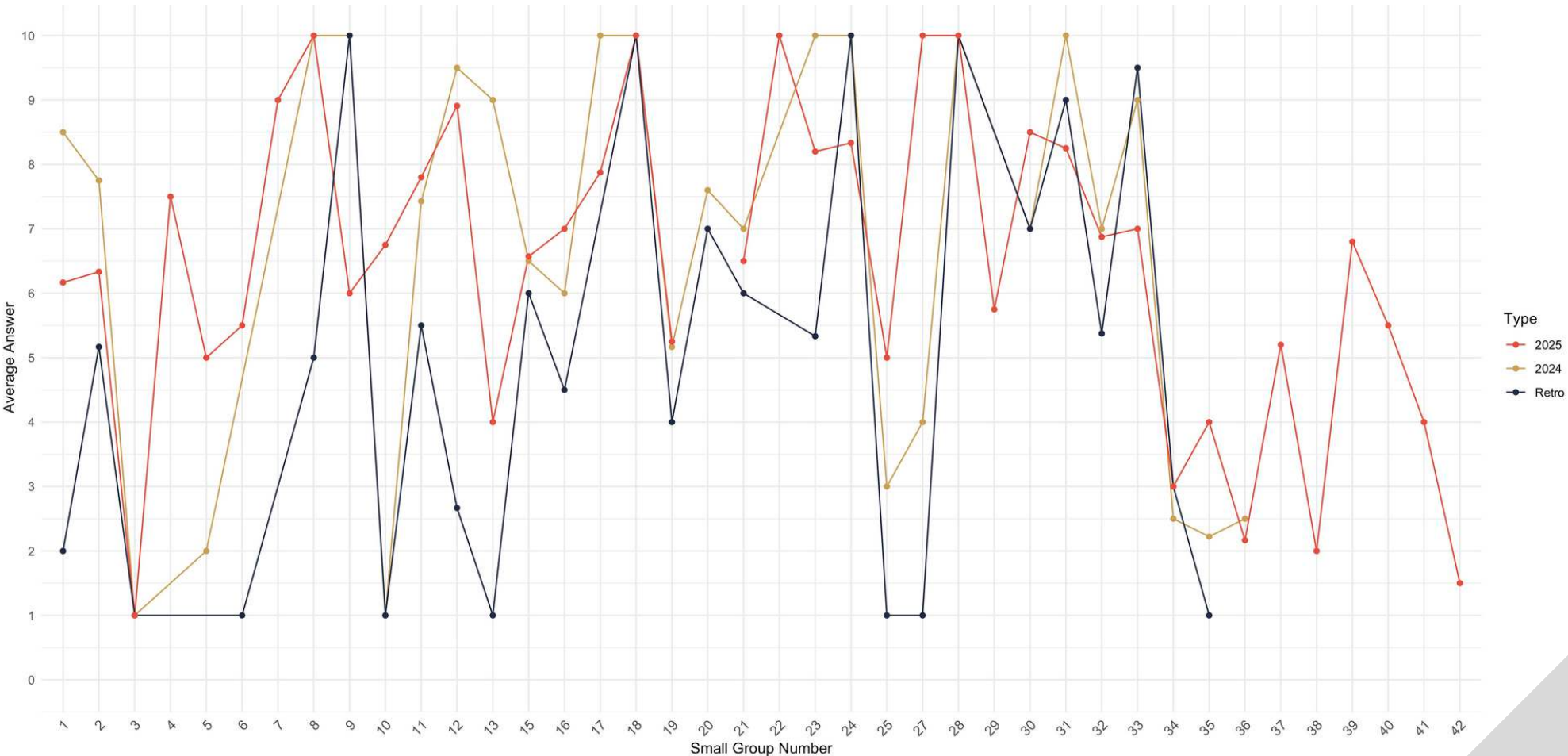


Are you in prayer every day?

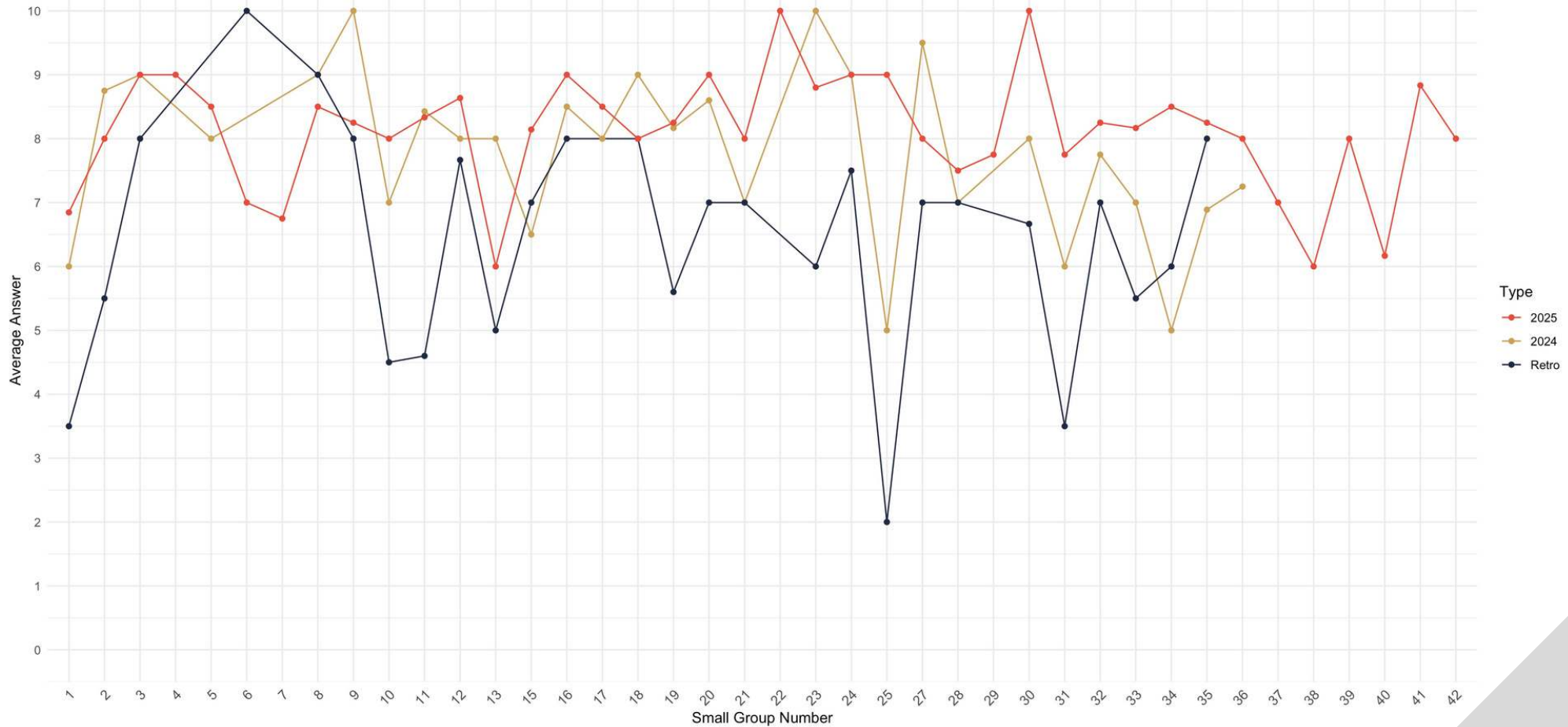
Question 3 : Are you in prayer every day?



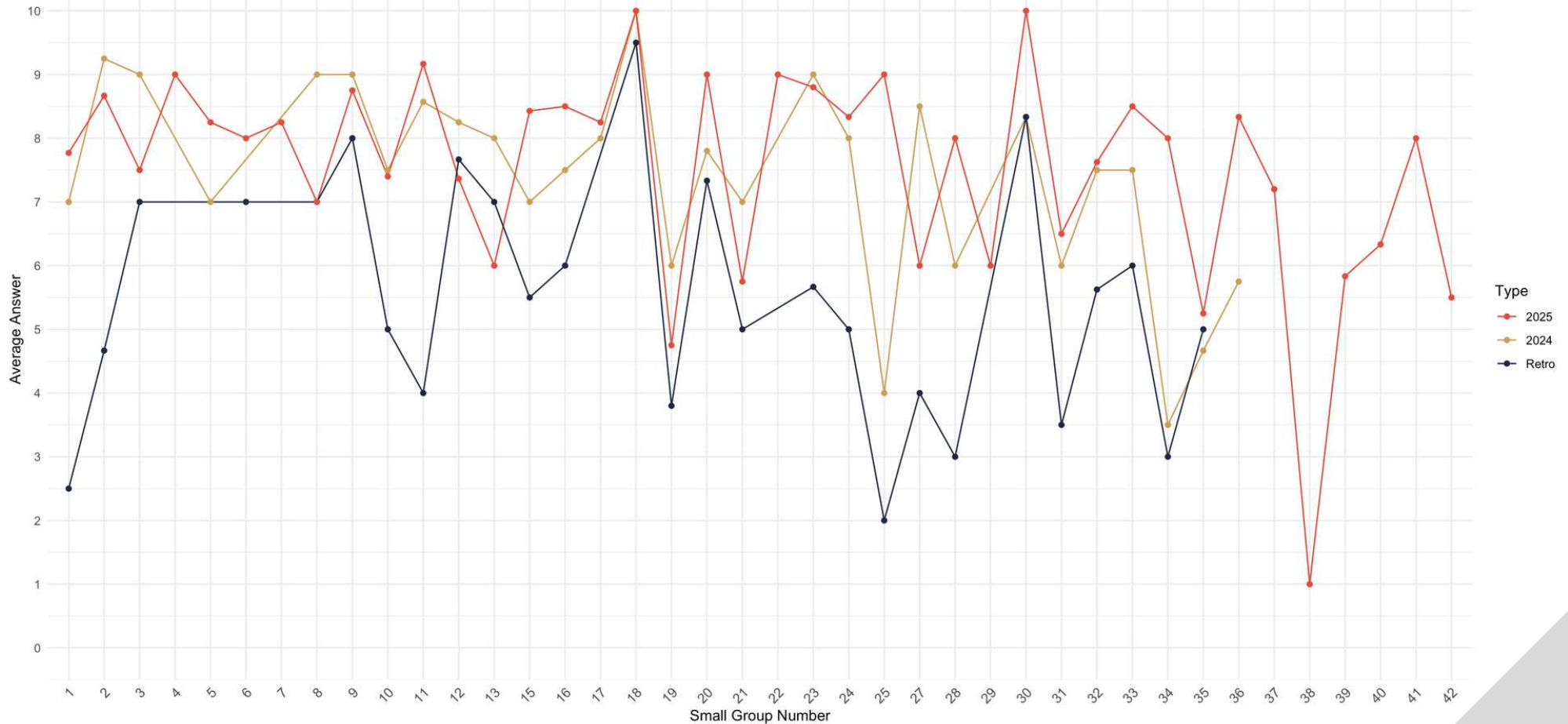
Have you read the Bible completely?



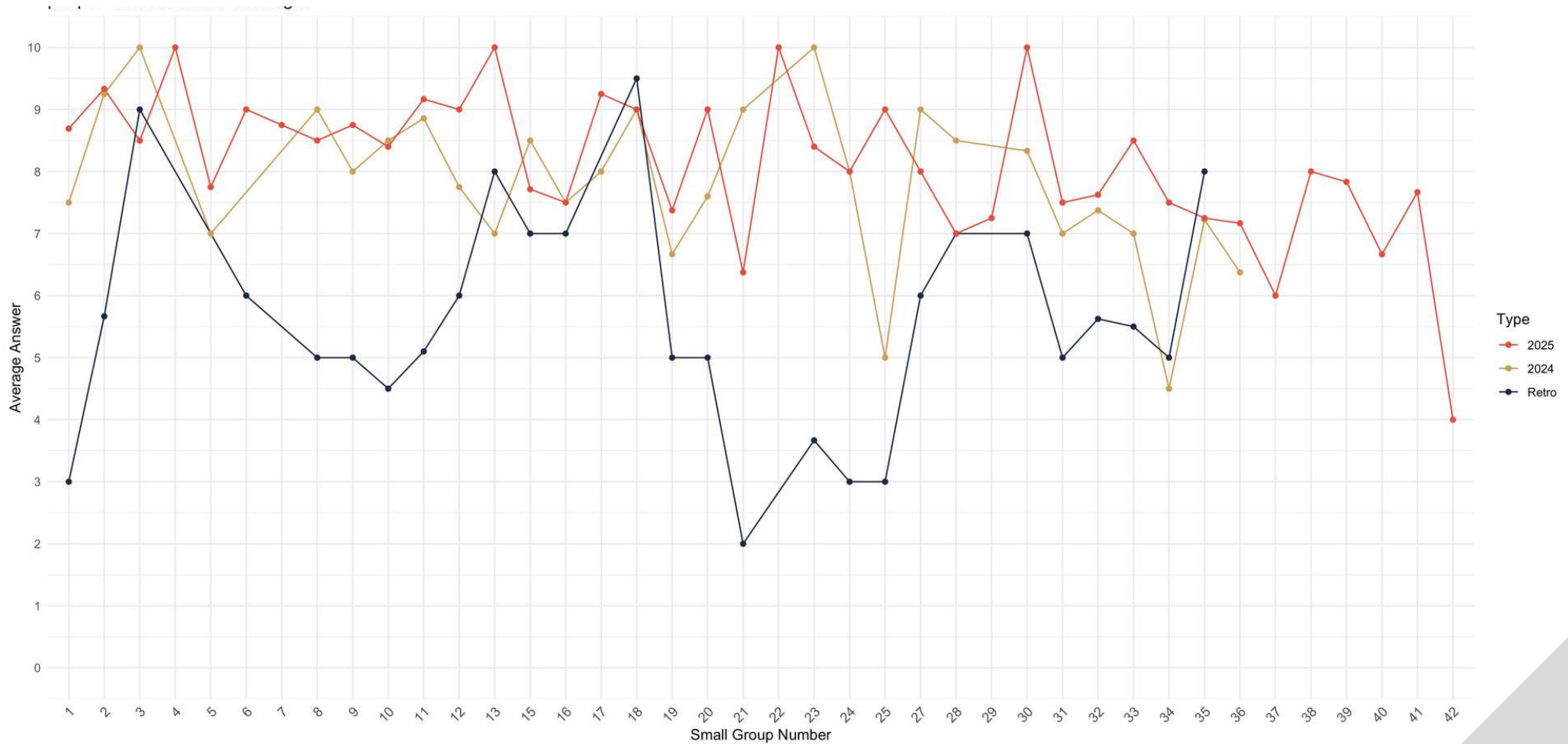
Have you forgiven others as you have been forgiven?



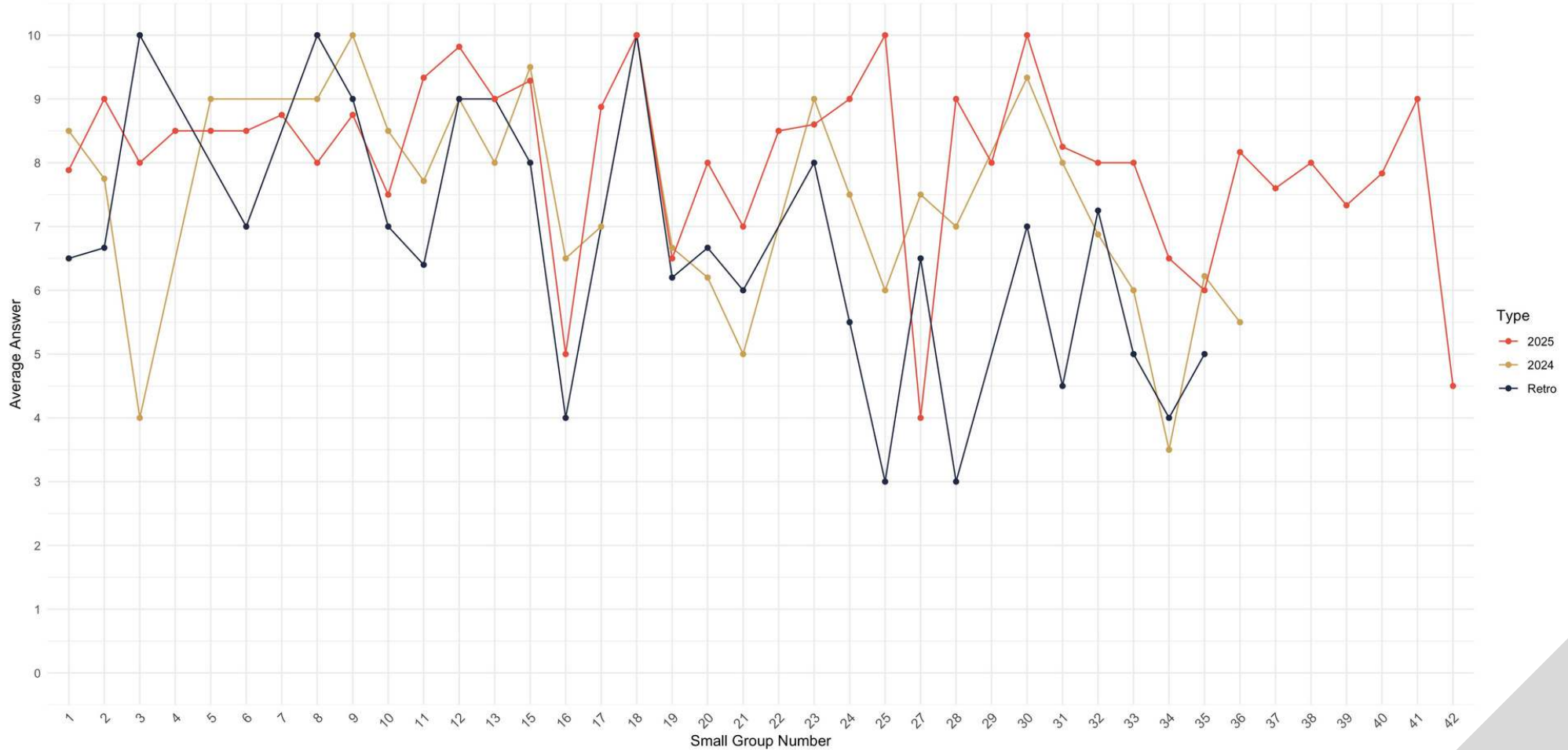
Do you have freedom from shame of past sins?



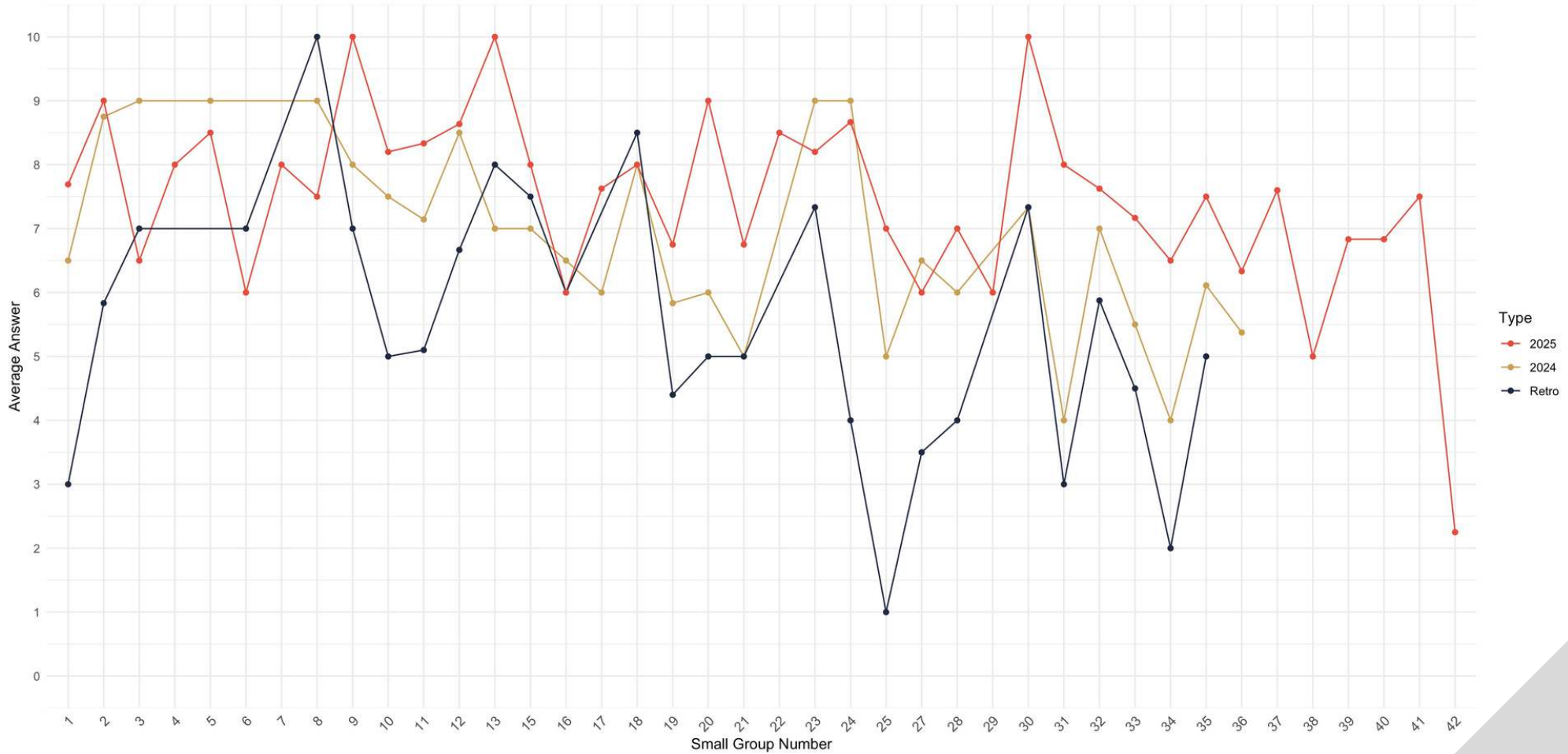
Do you have deep, vulnerable, honest relationships with other people - friends and/or marriage?



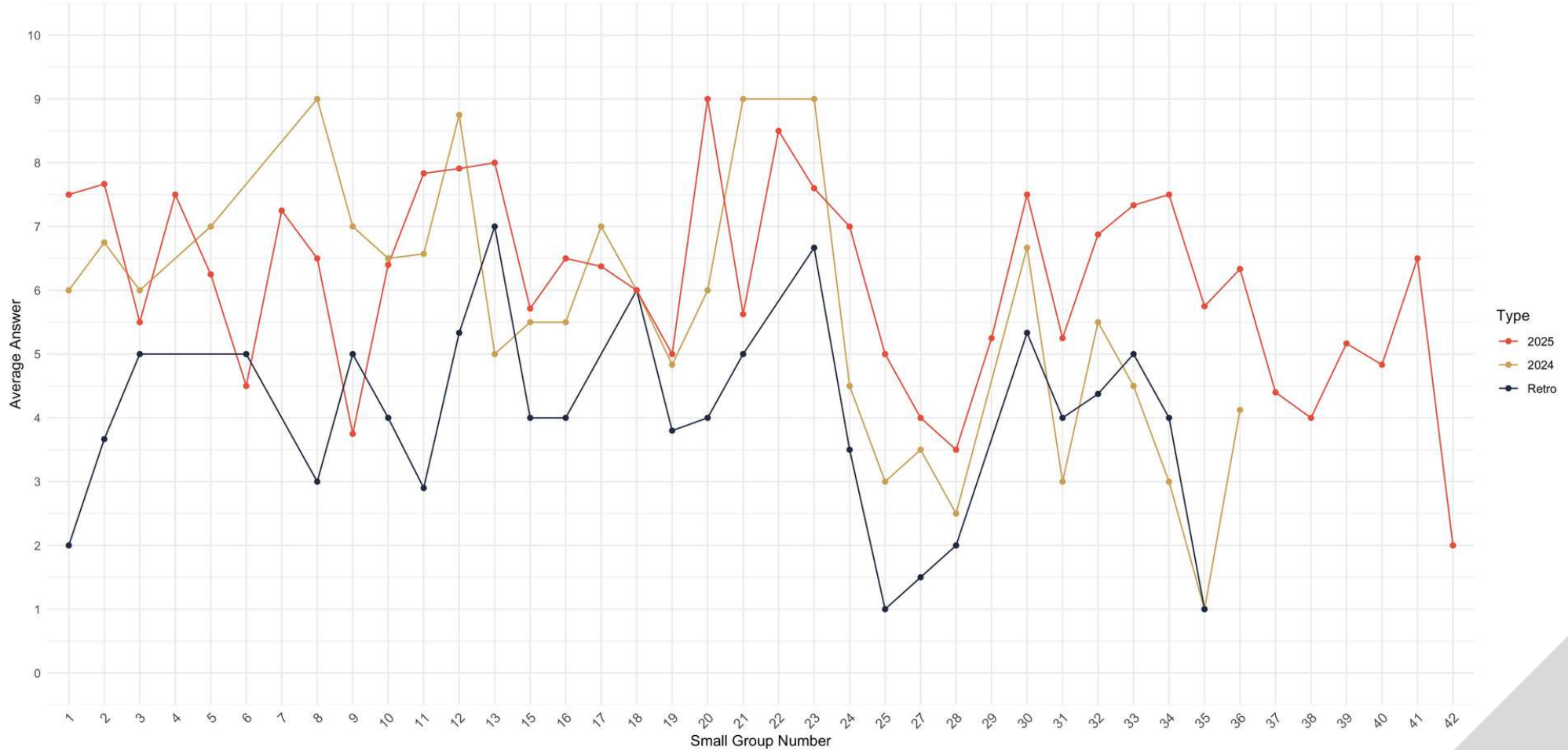
Do you attend church regularly and do you volunteer there in some capacity?



Are you generous with your time and treasure?



Are you evangelizing the Good News of Jesus Christ to other people?



SUMMARY

From the combined averages of all Small Group data, it is clear that participation in FIND continues to have a positive impact. Across all ten questions, there is an overall increase from retro responses to current responses, indicating meaningful spiritual growth among participants.

When looking more closely at each individual Small Group, current responses generally score higher than retro responses across the majority of questions. Some groups show especially strong differences between retro and current answers, while others display smaller but still positive gains. There are a few instances where retro responses exceed current responses for certain questions within a group, but these differences are limited and not as significant as the overall improvement seen across the full set of questions.

Importantly, there is not a single Small Group in which retro responses are consistently higher than current responses across all ten questions. Overall, each group demonstrates evidence of transformation in spiritual health and formation, reflecting the ongoing work of the Holy Spirit through FIND.



TRANSFORMATION SURVEY SUMMARY

How can someone measure the impact of FIND? We get asked that all the time. FIND is not a ministry that can tangibly show how many homes it built or water wells we drilled. FIND's mission focuses on "inner spiritual transformation" and "growth in intimacy with Christ". While FIND can point to a 93% group retention rate or 91% of its members giving, these stats do not fully capture our mission of transforming men through Jesus Christ through weekly fellowship and discipleship. Only God can see into a man's heart.

To measure this transformation, FIND created a brief, 10-question "Transformation Survey." It helps members reflect on their spiritual growth. It is administered before every new group launches and we did this retroactively for current members that have been in a FIND group already for years. The survey results track individual and ministry-wide spiritual progress, offering a tangible way to show the ministry's impact. We will continue to conduct this survey annually and with each new group that forms.

The overall data shows a clear positive impact. Almost every question sees at least a one-point increase from the retro to current responses, indicating positive spiritual growth. We are headed in the right direction!



CURIOUS ABOUT THE RESULTS?





MORE INFO

Clint Harrington

Founder, Executive Director

EMAIL ADDRESS

clint@FINDdiscipleship.org

PHONE NUMBER

(832) 752-7371

WEBSITE

finddiscipleship.org



THANK YOU



Real men...real discipleship

