

# The Jeremy Hall Family

*Serving the Lord in Port Elizabeth, South Africa*

Dear Pastor and Friends, Greetings in

the Lord!

Thank you for your continued prayers and faithful support. We are grateful to see steady growth in the ministry this past month.

At the Bible College, I am teaching a course on Biblical Finance and have completed 11 of 16 weeks with 20 young people preparing for ministry. It has been a practical and encouraging time, and it is a blessing to see the students growing and applying these truths.



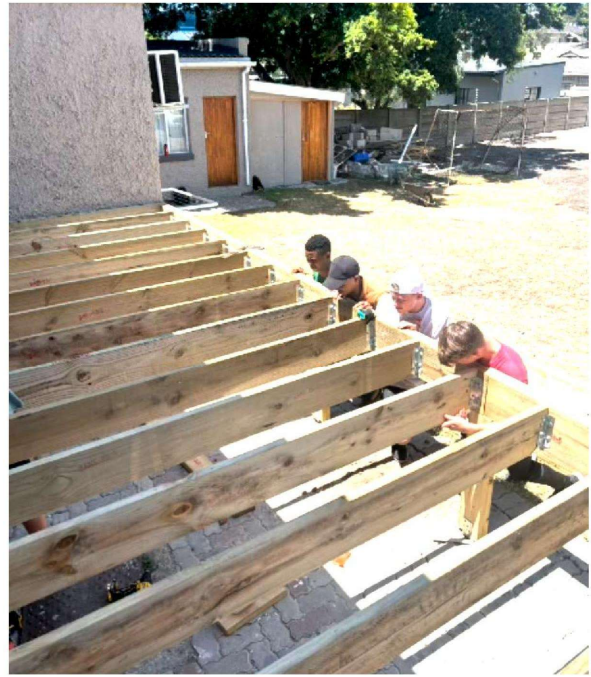
In the church, we have continued preaching through the book of Acts and have now reached chapter 16 (45 sermons in). This study has strengthened my personal convictions about the importance of the local church and the need to plant more churches. Just over two years in, we are encouraged to see folks stepping into leadership. We now have a treasurer and several men are helping to lead different parts of the service — an answer to prayer.

We also rejoice in two recent baptisms—Cole and Rubin—and are thankful for many new visitors.

We are planning to begin furlough on December 1 for at least six months. Please pray for wisdom in preparation and for the ministry here during our absence. We would love the opportunity to visit and give an update at your church—please contact me if you are interested ([jhsouthafrica@gmail.com](mailto:jhsouthafrica@gmail.com)).

The Academy continues to do well. I wear many hats on campus, and this past month included several building projects. We added an office, combined two rooms into a new classroom, and some of the guys and I built a deck for a commons area outside the library.





Our next project is dry-walling the chapel, installing some widows, and finishing the floors. We are currently getting quotes and are hopeful that Newton Park Baptist Church may be able to fund the majority of the project, as the church makes regular use of the hall.

**Prayer Requests:**

- Continued growth and leadership development in the church
- Wisdom in the Academy ministry
- Preparation for furlough
- Potential church plant in the Schauderville area

Thank you for standing with us in prayer and support.

Sincerely,  
Jeremy and Rebekah Hall

*Support Address:*  
Vision Baptist Missions  
Att. Jeremy Hall  
PO Box 647  
Dawsonville, GA 30536

*Home Church.*  
Whitfield Baptist Church  
Pastor Wayne Cofield  
2134 Dug Gap Rd.  
Dalton, GA 30720