



Inlet United Newsletter for February 1 to February 7, 2026



What's Happening at Inlet United

February 1 to February 7, 2026

HIGHLIGHTS OF THE WEEK:

SACRED WALKS COMBINED EVENTS THURSDAY, FEBRUARY 5 - Join us for this combined community event with our Morning Drop in Coffee and Labyrinth Walk from 10:30am to Noon and our evening event with Labyrinth Walk and Healing Pathway Chair Sessions from 7pm to 8pm. These are drop-in events & Everyone is Welcome! More details in this newsletter!

UPCOMING THIS WEEK:

Sunday Worship Service, February 1, 2026 - Worship Service at 10am in person at The Springs and via YouTube LiveStream: [Click here for Link](#). Theme: "Being At Home In Faith And Life". Guest Worship Leader, Rev. Daniel Kirkegaard presiding along with Music Director, Scott Gould.

Monday, February 2 at 10:30am - Centering Prayer - In person at Inlet United at The Springs meeting room. For more details [Click Here!](#)

Monday, February 2 - Healing Pathway - Sessions are booked in advance for 1:15pm or 2pm. To book a session, please email healingpathway@inletunited.ca or contact the office at 604-939-5513. For more details [Click Here!](#)

Wednesday, February 4 from 7pm to 8:30pm - Inlet Sings! Choir rehearsal at Inlet United at The Springs. Childminding available upon request! For further details contact office@inletunited.ca



Prayer:

Spirit of wisdom and wonder,
in this season after Epiphany, open our eyes to everyday miracles—
in shared meals, in wintry walks, in small acts of kindness.
Root us here at Inlet United Church in hope that reaches beyond fear,
that we may glimpse your kingdom among us.
Amen.



Stewardship Message

Inlet United Church Planned Giving program:

Where there's a Will there's a Way. How true! It is also true that when there's a will, the way is made much easier for those who must administer your estate after you die. Is your will up to date? Have you included Inlet United Church as a beneficiary?

For further information on remembering Inlet United Church in your will, please contact the Stewardship Ministry; Fran, Cathy A., Julie A., Marta P., Betty.



Morning Labyrinth Walk & Drop in Coffee

Next Event: Thursday, February 5, 2026

For more information visit:

<http://inletunited.ca/events/morning-labyrinth-walk-drop-in-coffee/2026-02-05>



Labyrinth Walk and Healing Pathway Chair Sessions

Next Event: Thursday, February 5, 2026

For more information visit:

<http://inletunited.ca/events/labyrinth-walk-healing-pathway-chair-sessions/2026-02-05>



Pancake Brunch

Join us after Sunday Worship on February 15th for a Pancake Brunch - Everyone Welcome!

REQUEST FOR VOLUNTEERS:

Hospitality needs a few volunteers to assist. A sign up sheet for helpers is in the foyer.



Next Drop in: Monday, February 16

Enter from the Office Level



Book Study: Exploring Faith

Curious about church, but not sure what you think about God, Jesus, or the Bible?

Wondering what this community believes (and what it doesn't)?

You are warmly invited to a gentle, no-pressure **"Exploring Faith"** series designed especially for people who are new, returning, or just unsure.

To register and to get the reading list and book: email revjenn@inletunited.ca

For more information visit:

<http://inletunited.ca/events/book-study-exploring-faith--128/2026-02-03>



Tri Cities Poetry Fundraiser

Saturday, February 28, 2026

Inlet Connects Ministry is teaming up with Tri Cities Poetry to host an evening of poetry, arts, and community. Non-alcoholic beverages and snacks will be available and a silent auction will take place.

Help us to support this grassroots organization and keep their regular events free.

For information about Tri Cities Poetry and to get your tickets, click the tab below.

For more information visit:

<https://www.eventbrite.ca/e/tri-cities-poetry-fundraiser-tickets-1979675834713?aff=oddttdtcreator>



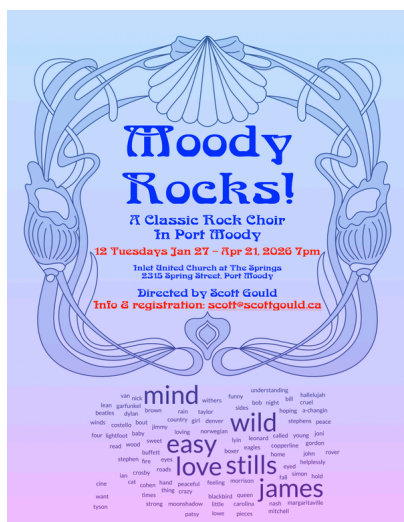
Inlet Sings!

We invite you to join Music Director, Scott Gould and Inlet Sings! for regular choir rehearsals on Wednesday evenings from 7pm to 8:30pm - No matter your age or background, if you have a passion for singing, we have a place for you.

No fees & childminding available upon request.

For more information visit:

<http://inletunited.ca/events/inlet-sings/2025-10-01>



Moody Rocks! A Classic Rock Choir in Port Moody

New Sessions for 2026:

Tuesdays - January 27 to April 21 at 7pm

Inlet United Church - 2315 Spring Street, Port Moody

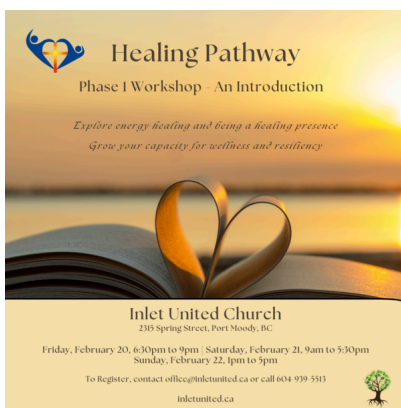
For more information and to register, please contact Scott Gould directly at scott@scottgould.ca

TAIZÉ CONTEMPLATIVE WORSHIP

Next Experience: Thursday, February 26 at 7pm - Rev. Jenn Swanson presiding and along with Guest Musician, Dr. Bruce Harding

For more information visit:

<http://inletunited.ca/events/taize-contemplative-worship--73/2026-01-22>



Healing Pathway Phase 1 Workshop

For more information or to register: email office@inletunited.ca or call 604-939-5513



Inlet United 2025 Income Tax Receipts

Income Tax receipts for donations received in 2025 will soon be sent to donors whose email addresses are on file. If you do not receive yours please check in your 'Junk' file. The receipts come from donations@inletunited.ca.

If we do not have your email address on file your tax receipt will be delivered by hand or by Canada Post in the next few weeks.

Please do check the details on your receipts, as errors do occur.

Remember to save or print the receipt and file it with other documents you are saving for when you file your income tax return.

Marcia Carmichael, Donations Secretary



CONNECTING NEIGHBOURS THROUGH ENGAGING ACTIVITIES!

Community Breathwork at Inlet United

For further information and to register, contact Monica Krake at monica@headplusheart.com



Community Breathwork

We meet monthly for an intimate gathering that combines facilitated breathwork, intentional manifesting, and a supportive community of people committed to growth. Led by Monica Krake.

Sign up: monica@headplusheart.com or [@monicakrake](https://www.instagram.com/monicakrake)

Join us for Summer Camp 2026!

Camp STEAM Coming **HERE** this summer!
Fun weekly themes like Minecraft and LEGO.
Learn new skillsets, mindsets and toolsets while having so much fun!

campsteam.ca

Robotics

Minecraft

Science Experiments

Engineering Builds

3D Printers and more!



Camp STEAM Canada

Summer Camps at Inlet United July 6 to August 28

For more information visit:

<https://campsteam.ca/summer-camps/port-moody/>

Inlet Music Series
presents

Krystle Dos Santos
R&B, Soul, Jazz



Sat. Feb. 21/26, 7:30 pm (doors 7 pm)
Tickets: \$40 Advance
(\$50 at door if not sold out)
Student Tickets: \$25 + s/c/tax
Inlet Theatre
100 Newport Dr., Port Moody
(free parking)

www.PortMoodyMusic.com





Inlet Theatre Music Series

For more information visit:

<https://www.portmoodymusic.com/series-concerts>



The Wider Church
Spreading God's Love

Our Region and Across the Globe



Black History Month

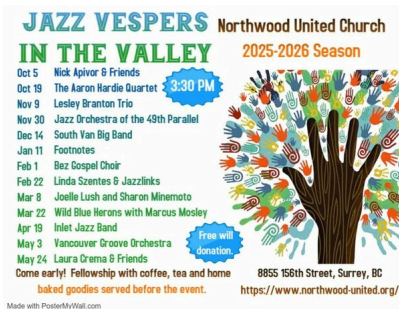
February is Black History (African Heritage) Month, officially recognized in Canada since 1996. It is a time to highlight the histories, contributions, and lived realities of people of African descent, and to reflect on the ongoing impacts of anti-Black racism.

Communities of faith may draw on worship resources, reflections, and educational materials, including Here from the Beginning, a United Church exhibition celebrating Black voices and experiences. Communities might also explore the United Church's commitment to the United Nations Second International Decade for People of African Descent (2025–2034).

While February offers a focused moment, this work continues year-round through ongoing opportunities for learning, worship, and action.

For more information visit:

https://united-church.ca/news/black-history-month-resources-available-year-round?utm_source=E-Newsletters&utm_campaign=514e84929c-ES_260113_COPY_01&utm_medium=email&utm_term=0_-3c3b6f8241-159521893&goal=0_53a49c9e28-514e84929c-159521893&mc_cid=514e84929c&mc_eid=a521c3e8d2



Northwood United Church



Jubilee United Church - Please Join us!

Jubilee United Church



Imagine Children's Retreat

For more information visit:

<https://www.firstthirdministry.ca/imaginechildrensretreat.html>

The Pacific Mountain Region

And World Council of Churches

Pacific Mountain Region

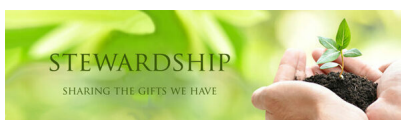
For current events and news, please visit the **Pacific Mountain Region** website.

Pacific Mountain Region Indigenous Ministry

For current events and news, visit PMR Indigenous Ministry - **click here!**

The World Council of Churches

Please visit the **World Council of Churches** website for the Ecumenical Prayer Cycle prayers for the current week.



Financial Offerings

The ministry of Inlet United Church relies heavily on donations from you to keep the ministry operational. Your financial offering is a faith response and a symbol of stewardship. We use these donations to do the work of Jesus both here in this community and far beyond our own walls.

There are 4 easy ways to donate (tax receipts issued at end of year):

1) Interac e-transfer through your bank or credit union. Interac e-transfers should be sent to **donations@inletunited.ca**.

2) PAR (automatic monthly donations through your bank). Please reach out to Marcia Carmichael or the office via phone or email to set this up. **Note - If you would like to increase your monthly PAR offerings, please contact Marcia to arrange this.**

3) Donate via credit card on our website – **www.inletunited.ca** – using the “Give” option (select "Local Offerings/General" from the "To" drop down)

4) Send a cheque made out to Inlet United Church to the office. Remember to include your envelope/donor number if you have one.

If you are attending in person, you may donate via our wooden offering box on Sundays in the sanctuary. Please write your name, contact information and/or envelope number on the envelope if you would like your donation to be added to your annual tax receipt.

We thank you again for your generosity and your support!

For more information visit:
<https://www.inletunited.ca/give>



Inlet United Church Contact Information

Get in Touch!

Office Hours: Monday - Friday from 9:30am - 3:30pm

EMAIL:

Rev. Jennifer Swanson | revjenn@inletunited.ca

Office Administrator – Kelly Doyle | office@inletunited.ca

AV Technician - Robbie Munro | AVTech@inletunited.ca

Music Director - Scott Gould | scott@scottgould.ca

PHONE:

Main Church Number: 604-939-5513

Minister's Direct Line: 778-369-1938

ADDRESS:

2315 Spring Street, Port Moody, BC V3H 0L7

Website: www.inletunited.ca



Newsletter Submissions

Your submissions are welcome!

HOW TO SUBMIT YOUR POST

Please submit posts to office@inletunited.ca.

Submission deadline: End of day Wednesday each week.

The newsletter features Inlet United Church and related community posts. Please include your event or news information and a photo if you like.

Inlet United Church retains the right to edit all submissions for brevity and clarity, to remove or not include submissions.

Thank you!