

St. John's Messenger



Volume 105, Issue 3

March 19, 2025

Office Hours

Tuesday, Wednesday, Thursday
8:30 a.m.-2:30 p.m.

Church Staff

Pastor Karla Leiby

pastorkarla@stjohnslutherannorrry.org

570-854-3919

William Jacavage
Director of Music

Sue Billman
Office Manager
sjelc300@ptd.net

Tina Pontius
Treasurer

Joyce Shearer
Payroll Treasurer

Barb Moyer
Restricted Fund Treasurer

Congregation Officers

Mike Erdley, President
Holly Bedisky, Vice President
Eric Shearer, Secretary

Congregation Council

Judy Dunkelberger
Mike McWilliams
Steve Mertz
Teresa Meisinger
Pam Miller
Randy Stine
Craig Treacher

Church phone: 570-473-3770

Email: sjelc300@ptd.net

Website:

<https://stjohnslutherannorrry.org>



“My refuge and my stronghold, my God in whom I put my trust.” (Psalm 91:2)

We have begun the season of Lent. A time when we focus more intently on our relationship with Christ Jesus through prayer, fasting, and giving. Our Lenten series explores what the scriptures for the season reveal to us about our needs, personally and communally. Do you focus first on your own needs or on others' needs? We typically assume that these are two distinct categories. Scripture shows us that from God's perspective, our needs and the needs of our neighbor are similar and interconnected. God is not satisfied until everyone's needs are met.

Our series will help us to see our needs and the needs of our neighbors in the scriptures and then guide us into action so that all may have their needs met. Our daily devotions and midweek healing prayer service will help us to look deeper at those needs and how we may be called to address those needs. The needs we will focus on are embracing vulnerability, sleep, advocates, change, and beauty. I hope that you can join us in the fellowship hall for these healing prayer services with the hopes to bring about emotional consolation, forgiveness, restoration, connection, and comfort for all of God's creation.

We continue to need your support in the many ministries that we do here at St. John's. Some potential areas to get involved in are the garden crew, Vacation Bible School, Dinner Church project, worship planning team, home communion visitation, or any of the Sunday Worship roles. God's work is accomplished through the many hands and voices of our church family.

May God fill us with “All We Need” this Lenten season as we journey toward Holy Week, the cross of Good Friday, and the celebration of the empty tomb of Easter morning.

Blessings,

Pastor Karla

All We Need

Lent 2025

A Refuge for the Heart:
Midweek Worship with Healing Prayer
Wednesday Evenings at 7pm
St. John's Fellowship Hall

Week 1 Embracing Vulnerability

Week 2 Sleep

Week 3 Advocates

Week 4 Change

Week 5 Beauty

HOLY WEEK



WORSHIP SCHEDULE

Palm Sunday

Sunday, April 13
9:00 a.m.

Maundy Thursday

Thursday, April 17
Dinner Church
6:30 p.m.
Fellowship Hall

Good Friday

Friday, April 18
7:00 p.m.



Easter Sunrise Service

6:00 a.m.
Shikellamy Marina

Easter Service

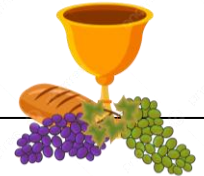
9:00 a.m.
St. John's Sanctuary

Maundy

Thursday Dinner Church

Thursday, April 17 @
6:30 p.m.
Fellowship Hall

Meal will be provided.
All are welcome.



Worship Bags

Worship bags for Palm Sunday and Easter
will be available for pickup April 8, 9, & 10
during office hours from 8:30 a.m.-2:30 p.m.

Pastor Karla will be at United Lutheran Seminary
in Gettysburg on March 25 & 26. She will then be
away on vacation March 27 through April 1.

Mark Giesen, Authorized Lay Worship Leader,
will be leading worship on March 30 and Pastor
Beth George, Zion, 286-6459, will be providing
pastoral coverage.



Breakfast & Intergenerational Sunday School

Potluck breakfast and our intergenerational
Sunday School Class will be held on Sunday,
March 23, following worship service. Everyone is
invited to attend. If possible, please bring a dish
to share.

Notes From the Director of Music



The Hymns of Lent: A Somber Yet Sacred Journey to Resurrection

As the Director of Music at our church, I find that the hymns we sing during Lent and Holy Week hold a special significance in our collective spiritual journey. This period, marked by reflection, penitence, and preparation, leads us toward the joyous celebration of the Resurrection. However, the hymns chosen for this season often carry a somber tone that may not resonate with everyone.

Throughout Lent, we encounter hymns that are written in minor keys, with melodies and lyrics that evoke feelings of sorrow and contemplation. Pieces such as “O Sacred Head, Now Wounded” and “Were You There?” invite us to reflect on the profound sacrifice of Christ and the weight of our own human experience. While these hymns may not be the most popular among worshippers—often viewed as dismal or heavy—their importance in our Lenten journey cannot be overstated.

The somber nature of these hymns serves a purposeful role in our worship. In a world that often seeks to minimize pain and discomfort, Lent calls us to confront our struggles and shortcomings. The music we sing during this season helps create a sacred space for reflection, allowing us to engage with the deeper truths of our faith. When we sing these hymns, we are not merely reciting words; we are participating in a collective acknowledgment of our need for grace and redemption.

Each note and lyric in these minor-key hymns is a reminder that our journey of faith is not just about celebration and joy. It encompasses a full spectrum of human emotion, including sorrow, longing, and repentance. By embracing these somber melodies, we allow ourselves to enter into the story of Christ’s passion and suffering, which ultimately prepares our hearts for the glory of Easter morning.

Moreover, the communal aspect of singing these hymns together unites us in our shared faith experience. As we raise our voices in harmony, we acknowledge that we are all on this journey together—supporting one another through our struggles and uplifting each other as we seek to grow closer to God. In these moments, we find strength and solace in the knowledge that we are not alone.

While it can be tempting to gravitate toward more uplifting and familiar songs, I encourage you to embrace the depth and beauty found in the hymns of Lent. Allow their messages to penetrate your heart, fostering a deeper understanding of the sacrifice made for our salvation. It is through this somber journey that we prepare ourselves to fully appreciate the joy and hope that come with the Resurrection.

As we move through this sacred season, let us open our hearts to the power of these hymns. May they lead us on a transformative path of reflection, repentance, and ultimately, renewal. Together, let us walk toward the light of Easter, carrying with us the rich experiences of our Lenten songs.

In faith and music,

William J. Jacavage (Bill)

Director of Music

REMINDER - Social Ministry is inviting you to participate in our **40 Days of Lent Collection**. We are asking for donation of **new** blankets/throws. Items collected can be dropped off in the sanctuary or at the church office no later than **Sunday, April 13th**. The donations will be given to local offices for cancer patients undergoing chemotherapy and other treatments. Some patients going through chemo treatments experience coldness and it is our hope that a warm blanket will help comfort them during their treatment. Any and all donations are greatly appreciated.



Thank you – to Peggy Campbell, Heidi Kerchoff and Owen White (pictured) and Conlan White for delivering this past year's collection to Birthright. They are always so appreciative of everything received.

NEWS FROM KATE'S KUPBOARD

Kate's Kupboard was open on **March 15, 2025**.

We helped **575** people by distributing **180** household/personal care bags, **180** produce boxes, **360** packs of meat and **303** bags of groceries. We helped **92** babies and provided adult care products to **21** people.

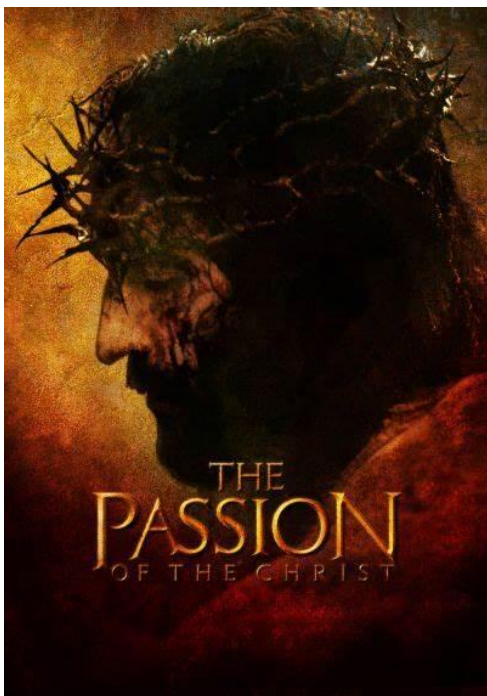
The total cost was **\$4,925.79**

Thank you to **ALL** the volunteers who helped with this Kate's Kupboard in any way.

Between our February and March Kate's Kupboard we helped a family of **1**. This person had no food so we provided the individual with **1** household bag, **3** bags of groceries and **4** packs of meat. We help people through NEIGHBORLYPA. Com.

RECENT DONATION

Kate's Kupboard has recently received donations of food items, adult care products and baby items. We greatly appreciate all these donations but our appreciation falls short of the appreciation shown by the people who receive these items. They thanked us many times. Thank you to Sue Billman for giving Birthright a tour of Kate's Kupboard. They were impressed with the many ways we help people in the community.



Movie Night

Palm Sunday, April 13

6:00 p.m.

Fellowship Hall

Doors open at 5:30p.m.

Join us for a time of fellowship as we watch
The Passion of the Christ
the story of Jesus' life and journey to the cross.

Bring a comfortable lawn chair to sit in.
Refreshments will be provided.
Sponsored by Social Ministry.

Motherhood is better together!

Being a mom is one of the most rewarding jobs—but it's also one of the hardest. You don't have to do it alone! St. John's has partnered with **MomCo** to launch a local **MomCo Meet-Up**—a place where moms can connect, share, and support one another. Each week, we'll share a meal, swap stories about the joys and challenges of parenting, and lift each other up—because let's be honest, we're all figuring this out as we go!



- **When:** Mondays at 6:00 PM, starting April 14
- **Where:** St. John's Library (near the preschool entrance)
- **This time is just for YOU, Mama!** We kindly ask that you leave little ones at home.

If you're interested but need childcare or a different meeting time, please reach out—we'd love to help!

- **Contact:** Kelsey Buckholtz at kng5046@gmail.com
- **Register:** Visit themom.co/join and enter code **7E9M**

We can't wait to see you!

Monthly Financial Information

2025	ACTUAL	BUDGET
February Income:	\$ 19,330.60	\$ 21,309.76
Year to Date Income:	\$ 38,341.62	\$ 42,619.52
February Expenses:	\$ 19,976.28	\$ 20,318.57
Year to Date Expenses:	\$ 44,919.81	\$ 44,207.13
Income Less Expense – February		-\$ 645.68
Year to Date		-\$ 6,578.19

PRAYERS: Bob Herbert; Sue Lahr; Nathan Ferster; John Oliver; Terry Walker; Marvin Gaugler; Carey Hoffman; Jessica Hummel-Jansson; Louise and Paul Hilkert

HOMEBOUND Doug Manning; June Diehl; Mary Rogers; Mike Payne; Nevin Brungard; Elaine Kohl; Dolly Naginey; Nancy Hendricks; William Wagner; Phyllis Gordon; Betty Yerg; Jane Ressler; David Bartholomew; Marti Row

PRAYER
list

April 2025

Sunday	Monday	Tuesday	Wednesday	Thursday	Friday	Saturday
		1 AA 7:00 p.m.	2 Cub Scouts 6:30 p.m. Midweek Lent Service Fellowship Hall 7:00 p.m.	3 Girl Scout 6:30 p.m. Bell Choir 6:30 p.m. Al-Anon 7:00 p.m.	4	5 
Pastor - vacation						
6 Worship w/Comm. 9:00 a.m. Sunday School 10:15 a.m. Catechism 10:15 a.m.	7 Finance Committee 7:00 p.m.	8 AA 7:00 p.m.	9 Cub Scouts 6:30 p.m. Midweek Lent Service Fellowship Hall 7:00 p.m.	10 Messenger deadline 2:30 p.m. Girl Scout 6:30 p.m. Bell Choir 6:30 p.m. Al-Anon 7:00 p.m. Council Meeting 7:00 p.m. Dist. Scout Committee 7:00 p.m.	11	12
13 Palm Sunday Worship w/Comm. 9:00 a.m. Sunday School 10:15 a.m. Movie Night – The Passion Fellowship Hall 6:00 p.m. Doors open at 5:30	14 	15 AA 7:00 p.m.	16 Messenger Folding 9:00 a.m. Cub Scouts 6:30 p.m.	17 Maundy Thursday Dinner Church 6:30 p.m. Fellowship Hall Al-Anon 7:00 p.m. Roundtable 7:00 p.m.	18 Good Friday Good Friday Service 7:00 p.m.	19 Kate's Kupboard 9-11:00 a.m.
20 Easter Sunday Sunrise Service 6:00 a.m. @ Shikellamy Marina Worship w/Comm. 9:00 a.m. @ St. Johns	21	22 AA 7:00 p.m.	23 Cub Scouts 6:30 p.m.	24 Girl Scout 6:30 p.m. Bell Choir 6:30 p.m. Al-Anon 7:00 p.m. District Scout Activities 7:00 p.m.	25	26 
27 Worship w/Comm. 9:00 a.m. Sunday School 10:15 a.m.	28	29 AA 7:00 p.m.	30 Cub Scouts 6:30 p.m.	MAY 1 Girl Scout 6:30 p.m. Bell Choir 6:30 p.m. Al-Anon 7:00 p.m.	2	3