



MOUNTAIN • HOME

*making life better and **YOU**
better at life through Jesus Christ*

605 West Sixth Street, Mountain Home, Arkansas 72653
870-425-6036 • www.fumcmh.org

Senior Pastor

Rev. John Fleming
jfleming@fumcmh.org

Worship Times

9:00 am
Crossroads
Contemporary Worship

11:00 am
Traditional Worship

✱ **Nursery is
available for
all services.**

✱ **Hearing
impaired
devices are
available.**

Television Broadcast

9:00 am and 11:00 am
KO7XL Channel 22

Radio Broadcast

11:00 am
KTLO 97.9 FM

Live streaming

9:00 and 11:00

Download our app
with your smart
phone here.



Give online with
your smartphone
here.

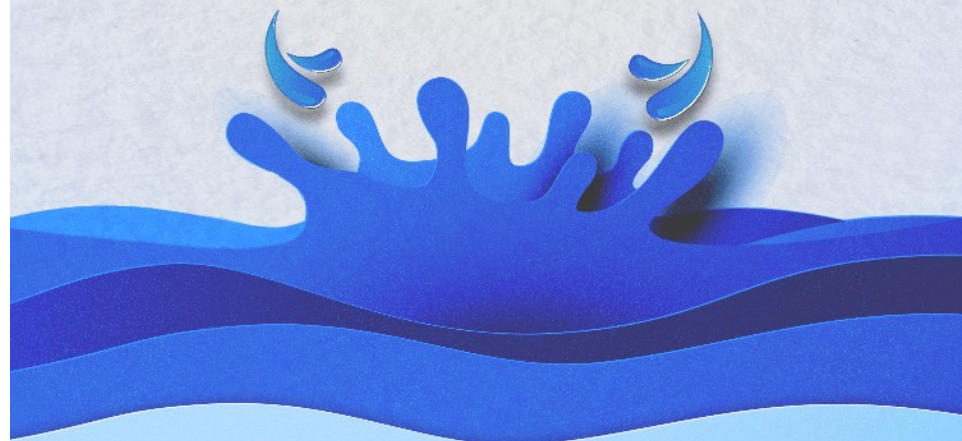


TRADITIONAL WORSHIP 11:00



BAPTISM

of the LORD



FIRST UNITED METHODIST CHURCH MOUNTAIN HOME

TRADITIONAL WORSHIP

January 11, 2026 • Baptism of the Lord Sunday

PRELUDE

Strong in the Faith (Broughton)

Shirley Poynter, organ

WELCOME AND ANNOUNCEMENTS

Rev. John Fleming

PASSING OF PEACE

CALL TO WORSHIP

Jesus, Name Above All Names

Chancel Choir

#2071

*HYMN OF PRAISE

Fairest Lord, Jesus

#189

*AFFIRMATION OF FAITH

The Apostles' Creed

#881

*GLORIA PATRI

*Glory be to the Father and to the Son and to the Holy Ghost;
As it was in the beginning, is now, and ever shall be,
World without end. Amen. Amen.*

#70

CHILDREN'S MOMENT

Terre Ware

*HYMN OF FAITH

When Jesus Came to Jordan

#252

OFFERTORY PRAYER

OFFERTORY WORD IN SONG

We Would See Jesus (Courtney)

Chancel Choir

We would see Jesus; lo! His star is shining above the stable while the angels sing; there in a manger on the hay reclining; haste, let us lay our gifts before the King. We would see Jesus, Mary's son most holy, Light of the village life from day to day; shining revealed through every task most lowly, the Christ of God, the life, the truth, the way. We would see Jesus, on the mountains teaching, with all the listening people gathered round; while birds and flowers and sky above are preaching the blessedness which simple trust has found. We would see Jesus, in his work of healing, at eventide before the sun was set; divine and human, in his deep revealing of God made flesh, in loving service met. We would see Jesus, in the early morning, still as of old he calleth, "Follow me!" Let us arise,

all meaner service scorning: Lord, we are thine, we give ourselves to thee. We would see Jesus, Shepherd, Savior, Cornerstone; the Bread of Life, beloved Son of God, the risen Lord who claims me as his very own, bids me to follow where his feet have trod.

*DOXOLOGY

#94

*Praise God from whom all blessings flow;
Praise God all creatures here below:
Alleluia! Alleluia!
Praise God the source of all our gifts!
Praise Jesus Christ, whose power uplifts!
Praise the Spirit, Holy Spirit!
Alleluia! Alleluia! Alleluia!*

PASTORAL & LORD'S PRAYER

Rev. John Fleming

SCRIPTURE

Matthew 3:13-17

Don Abel

MESSAGE

What I Believe About Baptism

Rev. John Fleming

*HYMN OF DEDICATION

I've Just Come from the Fountain

#2250

*BENEDICTION

*BENEDICTION RESPONSE

Amen, Amen

Chancel Choir

POSTLUDE

Blessed Assurance

Shirley Poynter, organ

*Thank you for worshipping with us!
Have a blessed week!*

Today's Acolytes: Thomas Reynolds & Will Thompson

** We invite those who are able to stand*