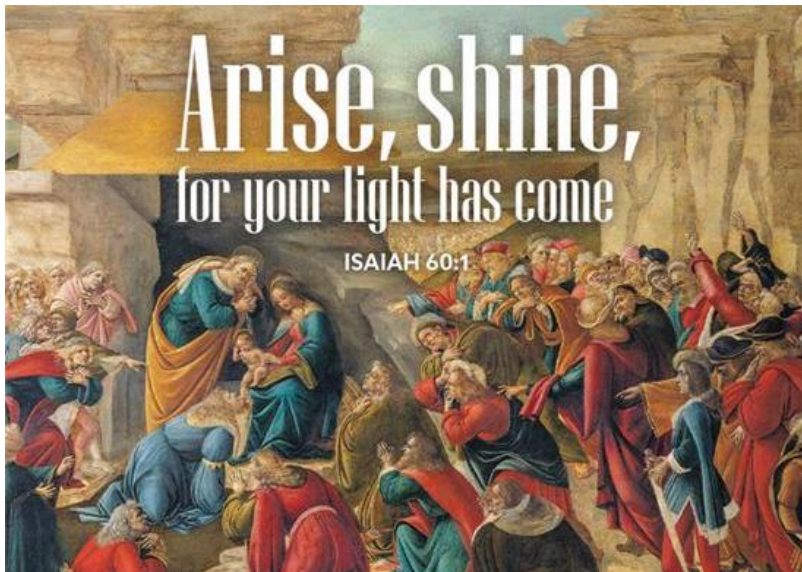




SUNDAY, JANUARY 4, 2026
EPIPHANY SUNDAY



Introduction

The feast of Epiphany ("manifestation") concludes the Christmas season with a celebration of God's glory revealed in the person of Jesus Christ. In Isaiah and Ephesians, that glory is proclaimed for all nations and people. Like the light of the star that guided the magi to Jesus, the light of Christ reveals who we are: children of God who are claimed and washed in the waters of baptism. We are sent out to be beacons of the light of Christ, sharing the good news of God's love to all people.

GATHERING

WELCOME/ANNOUNCEMENTS

GATHERING MUSIC

"PRAISE"

Music and lyrics: Brandon Lake, Chandler Moore, Chris Brown, et al.
© 2023 Brandon Lake Music; For Humans Publishing; Maverick City Publishing; Capitol
CMG Genesis; Capitol CMG Paragon; Housefires Sounds; Writer's Roof Publishing; Music
by Elevation Worship Publishing Admin: Capitol CMG Publishing, Essential Music Publishing LLC

CALL TO WORSHIP

Leader: Arise, shine, for your light has come! The glory of the Lord has risen upon us.

People: Darkness may cover the earth, but God's light breaks through with hope.

Leader: Like the Magi who followed the star, we come seeking the One who is born King.

People: We bring the gifts of our hearts; our praise, our wonder, our worship.

Leader: God's radiance gathers all people; God's presence draws us into joy.

People: Our eyes shall shine, and our hearts shall rejoice.

All: Come, let us worship Christ, the Light to the nations and the glory of God's people!

APOSTOLIC GREETING

The Grace of our Lord Jesus Christ, the love of God, and the communion of the Holy Spirit be with you all. **And also with you.**

HYMN OF PRAISE

"SHINE, JESUS SHINE"

Music and lyrics: Graham Kendrick
© 1987 Make Way Music Admin: Music Services Inc.

PRAYER OF THE DAY

O God, on this day you revealed your Son to the nations by the leading of a star. Lead us now by faith to know your presence in our lives, and bring us at last to the full vision of your glory, through your Son, Jesus Christ our Lord, who lives and reigns with you and the Holy Spirit, one God, now and forever. **Amen.**

WORD

CHILDREN'S MESSAGE

PRAYER OF ILLUMINATION

¹ Arise, shine, for your light has come, and the glory of the LORD has risen upon you. ² For darkness shall cover the earth and thick darkness the peoples, but the LORD will arise upon you, and his glory will appear over you. ³ Nations shall come to your light and kings to the brightness of your dawn.

This is the Word of the Lord. **Thanks be to God.**

GOSPEL ACCLAMATION

Congregation:

Al-le-lu - ia, al-le-lu - ia. Lord, to whom shall we

go? You have the words of e - ter - nal

life. Al - le - lu - ia! *Optional Repeat*

GOSPEL

MATTHEW 2:1-12

The Holy Gospel according to Matthew. **Glory to You, O Lord.**

¹ In the time of King Herod, after Jesus was born in Bethlehem of Judea, magi from the east came to Jerusalem, ² asking, “Where is the child who has been born king of the Jews? For we observed his star in the east and have come to pay him homage.” ³ When King Herod heard this, he was frightened, and all Jerusalem with him, ⁴ and calling together all the chief priests and scribes of the people, he inquired of them where the Messiah was to be born. ⁵ They told him, “In Bethlehem of Judea, for so it has been written by the prophet: ⁶ ‘And you, Bethlehem, in the land of Judah, are by no means least among the rulers of Judah, for from you shall come a ruler who is to shepherd my people Israel.’ ”

⁷ Then Herod secretly called for the magi and learned from them the exact time when the star had appeared. ⁸ Then he sent them to Bethlehem, saying, “Go and search diligently for the child, and when you have found him, bring me word so that I may also go and pay him homage.” ⁹ When they had heard the king, they set out, and there, ahead of them, went the star that they had seen in the east, until it stopped over the place where the child was. ¹⁰ When they saw that the star had stopped, they were overwhelmed with joy. ¹¹ On entering the house, they saw the child with Mary his mother, and they knelt down and paid him homage. Then, opening their treasure chests, they offered him gifts of gold, frankincense, and myrrh. ¹² And having been warned in a dream not to return to Herod, they left for their own country by another road.

This is the Gospel of the Lord. **Praise to You, O Christ.**

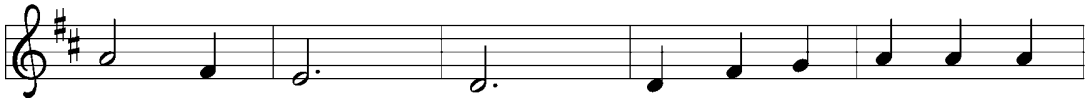


HYMN OF THE DAY

I WANT TO WALK AS A CHILD OF THE LIGHT (ELW #815)



1 I want to walk as a child of the light. I want to
 2 I want to see . . . the bright-ness of God. I want to
 3 I'm look - ing for . . . the com - ing of Christ. I want to



fol - low Je - sus. God set the stars to give
 look at Je - sus. Clear Sun of righ - teous-ness,
 be with Je - sus. When we have run . . . with



light to the world. The star of my life is Je - sus.
 shine on my path, and show me the way to the Fa - ther.
 pa - tience the race, we shall know the joy of Je - sus.

Refrain



In him there is no dark-ness at all. The night and the



day are both a - like. The Lamb is the light of the



cit - y of God. Shine in my heart, Lord Je - sus.

Text: Kathleen Thomerson, b. 1934

Music: HOUSTON, Kathleen Thomerson

Text and music © 1970, 1975 Celebration

OUR STATEMENT OF FAITH

The Apostles' Creed

I believe in God, the Father almighty, creator of heaven and earth.

I believe in Jesus Christ, God's only Son, our Lord, who was conceived by the Holy Spirit, born of the virgin Mary, suffered under Pontius Pilate, was crucified, died, and was buried; he descended to the dead. On the third day he rose again; he ascended into heaven, he is seated at the right hand of the Father, and he will come to judge the living and the dead.

I believe in the Holy Spirit, the holy catholic church, the communion of saints, the forgiveness of sins, the resurrection of the body, and the life everlasting. Amen.

PRAYERS OF INTERCESSION

Each petition will end with "Hear us, O God." and the response will be **"Your mercy is great."**

SHARING OF CHRIST'S PEACE

———— MEAL ————

OFFERING

Thank you for your continued generosity in supporting the ongoing ministry of Bethel Lutheran Church! In-person gifts may be placed in the offering plates, mailed to Bethel Evangelical Lutheran Church (2077 N. Frederick Pike, Winchester, VA 22603), given online at www.bethelwinchester.com or using the adjacent QR code.



MUSIC FOR REFLECTION

OFFERING PRAYER

Merciful God,

Everything in heaven and earth belongs to you . We joyfully release what you have entrusted to us. May these gifts be the signs of our whole lives returned to you, dedicated to the healing and unity of all creation, through Jesus Christ. Amen.

THE GREAT THANKSGIVING

The Lord be with you. **And also with you.**

Lift up your hearts. **We lift them to the Lord**

Let us give thanks to the lord our god. **It is right to give our thanks and praise.**

PREFACE



HOLY HOLY HOLY



Ho - ly, ho - ly, ho - ly are you, God of pow - er and



might; Heav - en and earth are filled with your



glo - ry. Ho - san - na in the high - est!



Bless - ed is the One who comes in your name. Ho -



san - na in the high - est, ho - san - na in the high - est!

JESUS' WORDS ABOUT COMMUNION

LORD'S PRAYER



Our God _____ in heav-en, _____ ho - ly is your name, _____ your



reign come, _____ your will done, _____ on earth as in heav-en _____



Give us today our dai-ly bread, and help us forgive as we have been for - giv - en _____



Words: Matthew 6:9-13; adapt by Mark A Miller and Laurie Zelman Music: Mark A Miller Adapt and music ©2008 Abingdon Press admin by the Copyright Company

INVITATION TO COMMUNION

A child has been born for us, a Son given to us. Come, receive the gift of Emmanuel.

THE DISTRIBUTION OF HOLY COMMUNION

Welcome to the Lord's Table!

Everyone, regardless of age and denomination, is invited to join us for Holy Communion. If you prefer a blessing, simply inform the communion distributors. The ushers will direct your row when it is time to come forward.

You will receive the bread from the first Holy Communion distributor. You will pick up the cup of wine or juice from the tray held by the second distributor. For those who need gluten free a pre-packaged **gluten-free** wafer and a cup of **grape juice** is also available.

Once you have communed, you are invited to return to your seat for silent reflection or singing

LAMB OF GOD



COMMUNION HYMN

CHRIST BE OUR LIGHT (ELW #815)



1 Long - ing for light, we wait in dark - ness. Long - ing for
 2 Long - ing for peace, our world is trou - bled. Long - ing for
 3 Long - ing for food, man - y are hun - gry. Long - ing for
 4 Long - ing for shel - ter, man - y are home - less. Long - ing for
 5 Man - y the gifts, man - y the peo - ple, man - y the



truth, we turn to you. Make us your own,
 hope, man - y de - spair. Your word a - lone
 wa - ter, man - y still thirst. Make us your bread,
 warmth, man - y are cold. Make us your build - ing,
 hearts that yearn to be - long. Let us be ser - vants



your ho - ly peo - ple, light for the world to see.
 has pow'r to save us. Make us your liv - ing voice.
 bro - ken for oth - ers, shared un - til all are fed.
 shel - ter - ing oth - ers, walls made of liv - ing stone.
 to one an - oth - er, signs of your king - dom come.



Refrain
 Christ, be our light! Shine in our hearts. Shine through the



dark - ness. Christ, be our light! Shine in your



church gath - ered to - day.

Text: Bernadette Farrell, b. 1957

Music: CHRIST, BE OUR LIGHT, Bernadette Farrell

Text and music © 1993 Bernadette Farrell. Published by OCP Publications, 5536 NE Hassalo, Portland, OR 97213.

All rights reserved. Used by permission.

COMMUNION BLESSING

SENDING

BENEDICTION

SENDING SONG

THIS LITTLE LIGHT OF MINE (ELW #677)



1 This lit - tle light of mine, I'm goin' - a let it shine;
2 Ev - 'ry - where I go, I'm goin' - a let it shine;
3 Je - sus gave it to me, I'm goin' - a let it shine;



this lit - tle light of mine, I'm goin' - a let it shine;
ev - 'ry - where I go, I'm goin' - a let it shine;
Je - sus gave it to me, I'm goin' - a let it shine;



this lit - tle light of mine, I'm goin' - a let it shine,
ev - 'ry - where I go, I'm goin' - a let it shine,
Je - sus gave it to me, I'm goin' - a let it shine,



let it shine, let it shine, let it shine.
let it shine, let it shine, let it shine.
let it shine, let it shine, let it shine.

Text: African American spiritual

Music: THIS JOY, African American spiritual

DISMISSAL

Thank you for worshiping with us today.

We hope every person felt welcomed here, especially our guests. We trust that our time together has filled you with a sense of joy and peace, and we invite you to return soon.

BETHEL STAFF & COUNCIL

Rev. Dr. David N. Young, Pastor

pastordave@bethelwinchester.com

Kristal Cutler, Director of Music

music@bethelwinchester.com

Edie Donovan, Parish Nurse

emcgoff@gmail.com

George W. Donovan, Sr., Director of Safety and Security

security@bethelwinchester.com

Shawn Garner, Facility Management

facility@bethelwinchester.com

Financial or Giving Questions

office@bethelwinchester.com

Matt Meade & Lexy Grymala Nursery Managers

office@bethelwinchester.com

Mel Siebert, Youth Ministry

youth@bethelwinchester.com

Nina Davis, Office Manager

office@bethelwinchester.com

Patty White, Parish Custodian

annwhite54@aol.com

Council Executive Committee

JENNIFER LAFOLLETTE, PRESIDENT, TEXT/CALL 540-533-9142, EMAIL jnanlafollette@gmail.com

CHERIE LAUCK, VICE-PRESIDENT & MINISTRY TEAM TEXT/CALL 540-305-7529, EMAIL cherie.lauck@bethelwinchester.com

MATT LYMAN, SECRETARY & COMMUNICATIONS TEAM TEXT/CALL 540-336-0300, EMAIL matt.lyman@bethelwinchester.com

LYNDA GRYMALA, TREASURER & FINANCE TEAM TEXT/CALL 540-222-9408, EMAIL lynda.grymala@bethelwinchester.com

DAVID YOUNG, PASTOR

COUNCIL GENERAL MEMBERS

MEL SIEBERT, EMAIL MEL.SIEBERT@BETHELWINCHESTER.COM

LEEANNE MARPLE EMAIL LEEANNE.MARPLE@BETHELWINCHESTER.COM

RENE HOLLEBRANDSE, MINISTRY TEAM EMAIL C.J.HOLLEBRANDSE@GMAIL.COM

SHARI FLETCHER EMAIL: SHARI.FLETCHER@BETHELWINCHESTER.COM

ROB CUTLER EMAIL: ROB.CUTLER@BETHELWINCHESTER.COM

BETHEL LUTHERAN CHURCH

2077 North Frederick Pike, Winchester, VA 22603, 540-662-3245

Office Hours: Monday-Friday 9:00 a.m. - 1:00 p.m.

www.bethelwinchester.com

