



DECEMBER 2025



ST. MARY'S LUTHERAN CHURCH
2001 80TH ST. ~ KENOSHA, WISCONSIN 53143
262*658*3555
FOUNDED 1874 ~ CURRENT LOCATION 1961

THE SEASONS OF ADVENT & CHRISTMAS

St. Mary's Lutheran Church has many ways for you and your favorite people to prepare for the birth of Jesus and the holy time of Advent & Christmas.

- Advent season starting with Advent 1 worship on **SATURDAY, NOVEMBER 29TH at 4:00PM** & **SUNDAY, NOVEMBER 30TH at 9:00AM**. St. Mary's will be *Lighting the Advent Wreath* at both services.
- On **FRIDAY, DEC. 5TH** Sunday School will host a "Drop & Shop" Event 5-8PM. (see pg. 7) here at St. Mary's!
- **SATURDAY, DEC. 6TH** is "*Surviving the Holidays*" a GriefShare event to be held in the Chapel Lounge with Nurse Sue. Still space available.
- **SUNDAY, DECEMBER 7TH** is **DEADLINE TO DROP OFF GIFTS** the Angel Tree—& Remember your angel tags!
- **SUNDAY, DEC. 7TH** is **DEADLINE** for Christmas Poinsettia Sales & Memorials to Kenosha Welcome Center. Call the office.
- **SUNDAY, DEC. 7TH - NIGHT OF WORSHIP** here at St. Mary's. 5:00pm is Soup Supper; 6:00pm is worship! All proceeds and prayers to go The ELCA Outreach Center. Wear Your Ugliest Sweater! Bring A Friend!
- **SUNDAY, DEC. 14TH AT 9:00AM**
"MARY SAID YES" the Sunday School children's Christmas program during service
- **MONDAY, DEC. 15TH—BREAKING THE CHAINS MINISTRY**—Gift Bag Assembly to be held in our Fellowship Hall at Noon. This is another way **CHURCH IN SOCIETY** ministers to our neighbors in need.
- **MONDAY, DEC. 15TH—Fish & Fusion** Christmas Party in the Youth Room!
- **TUESDAY, DEC. 16TH at 6:30PM. Blue Christmas Worship Service—at St. Paul's Lutheran church.** Our ELCA Churches share a special service together remembering that we are never alone.
- **WEDNESDAY, DEC. 17TH AT 11:00AM.** The Friendly Center will have a special December gathering at **The Fireside Restaurant on 30th Ave.** RSVPs required.
- **WEDNESDAY, DEC. 24TH—CHRISTMAS EVE SERVICES AT 5:00PM & 8:00PM.** Silent Night Candlelight and Children welcome at both.

*******THURSDAY, DEC. 25TH—CHRISTMAS DAY WORSHIP IS AT LAKESIDE LUTHERAN CHURCH AT 9:00AM WITH PASTOR BECCA LAABS.** (see pg. 5)*****

A Message from Our Pastor

The Rev. Dr. Jordan Miller-Stubbendick—December 2025

In her wonderful book *The First Advent in Palestine: Reversals, Resistance, and the Ongoing Complexity of Hope*, Kelley Nikondeha tells us:

When we turn toward Advent, the name on our lips is Emmanuel, *God with us*. So much in Christian faith relies on what the faithful actually mean when we say that name. Western Christianity has forsaken a deep understanding of Advent for strands of twinkling lights and the anticipation of seasonal pleasures.*

When we accept sentimental expressions and concede to holiday hurry, we miss the original gravity of Advent. We miss understanding how God's arrival, how *God with us*, shapes our ability to see the breaking in of God into a landscape, a people, a narrative—and what the earthly trajectory of the life Jesus implied then and implies now.

How God entered the world matters. Where and when God chose to come into the world carries significance. Advent is not about one season of devotion; rather, the advent narratives orient us toward a lifetime of faithfulness to the God of liberation, love, and peace.

The stories told around and about the birth of Jesus set our sights on a deep theology for troubled times, then and now. Advent pays attention to the people, places, and politics of generations awaiting God's arrival.

To approach Advent in its fullness, we approach it from an uncommon entry point: the darkness of suffering, the struggle of a long waiting. Confronting the hard landscapes of the past allows us to

understand the terrain God entered one starry night. If God can speak comfort and joy into ancient trauma, then the advent of hope awaits us too in our feral world. Into times of suffering also come words we are given for these times. As the angel says, "Don't be afraid." *God is with us*. (5-6)

Although twinkly lights get a bad reputation in the above excerpt, let me say that I love twinkly lights. We put Christmas lights on our house on November 15, because it was 60 degrees and sunny! I love the seasonal pleasures that come at this time of year: singing along to Christmas music, drinking hot chocolate, and picking out Christmas gifts.

And, at the same time, I deeply believe we need the season of Advent. We need the time and space to wait in hope that Advent provides. We benefit when we do not simply rush headlong into Christmas, but pause and take our time, sitting with ancient promises that still hold hope in our world.

We are all weary. There is much that we are carrying: health challenges for ourselves and those we love, worries about our country and the world, and relentless waves of bad news that we just weren't meant to shoulder day after day. The days are getting shorter and the air chillier. Our spirits cry out for a glimmer of light, a tendril of hope.

As Kelley Nikondeha writes, we often enter Advent through suffering and waiting. We each carry heavy burdens in our hands, on our backs, in our hearts and minds, whether they have been with us for some time, or are new this year. We long for comfort in the midst of our grief.

It is into this landscape of the human heart that Emmanuel, God with us, is born. Into the realities of our lives and the wider world, God enters the narrative of life on earth as a baby who will bring hope and life for untold centuries to come. This baby, Emmanuel, God with us, knows our human suffering, and our human joys. This baby reminds us that what we see around us is not all there is.

and challenge of being human: of holding both sorrow and joy, heartache and hope, while being held by the promise that God has come into our world, is coming, and will come again. That through the profound, unimaginable, accessible love of God, our lives and this world matter, we are never alone, and we live in hope, even when it doesn't always feel like it.

Advent is a time to dwell in the mystery of what is promised, but what is not yet here. Advent is a time of the already and the not-yet. Advent is a time to sink into the mystery

May you find peace and hope in these days of Advent waiting,

Pastor Jordan

AN EXTENSIVE LIST OF ADVENT RESOURCES:

ELCA World Hunger: <https://www.elca.org/our-work/relief-and-development/elca-world-hunger/wh-advent>

^ Includes Advent calendar and winter hygiene kit ideas

ELCA Sumud (Justice for Palestine and Israel): <https://resources.elca.org/?categories=sumud&subcategory=sumud-advent-2025>

^ Includes Christmas flipbook for children

ELCA Leadership Circle: <https://community.elca.org/leadership-circle-advent-devotional-series>

^ Video devos, with last devo by Presiding Bishop Yehiel Curry

Luther Seminary: <https://www.luthersem.edu/godpause/advent-devotional/>

Lutheran Summer Music: <https://www.lsmacademy.org/acal>

^ A musical Advent calendar

Illustrated Ministries: <https://www.illustratedministry.com/thewilltodream>

^ Includes coloring pages, family practices, youth, children, and calendar

Nebraska Synod: <https://nebraskasynod.org/advent-devotional-series-2025/>

Pittsburgh Theological Seminary (Presbyterian): https://www.pts.edu/devotional_1

Lutheran Hour Ministries: <https://www.lhm.org/advent/>

Bread for the World: <https://www.bread.org/article/advent-2025-people-in-uncertain-times/>

Lutheran Church in Australia: <https://www.ltm.org.au/flipbk/advent-2024/>

^ Christmas carol flipbook

United Methodist Race and Religion Office: <https://www.r2hub.org/library/god-with-us-advent-promises-for-a-just-world-year-c>

United Methodist Race and Religion Office: <https://www.r2hub.org/advent>

Presbyterian Justice Unbound: <https://justiceunbound.org/transadvent/>

^ Trans focus with Advent calendar

Episcopal Church: <https://www.episcopalchurch.org/dfms/2025-advent-and-christmas-resources/>

African Methodist Episcopal Church: <https://ameced.com/product/2025-advent-devotional/>

Episcopal Relief: <https://www.episcopalrelief.org/church-in-action/faith-formation/advent/>

^ Great for kids, Spanish version available

UCC Racial Justice's Abolition Advent Calendar: <https://www.ucc.org/abolition-advent-calendar/>



MARY, DID YOU KNOW? (YES. YES, SHE DOES!)

Monday, December 1
Monday, December 8
Monday, December 15
Monday, December 22
at 12:00 PM(CST)

Join historian, theologian and licensed tour guide Mary Danho for four digital sessions that send your spirit traveling to the Holy Land.

Mary Danho grew up in Jerusalem just blocks from the Church of the Holy Sepulcher, listening in on tours long before she was leading them herself. There are fewer tourists and travelers coming to visit these days, but Mary knows there are many who long to make connections between their faith and the very real places she calls home.

Mary is offering a digital Advent series for long distance pilgrims, including some who have traveled with her in the past or hope to join her tours in the future. She is relatively new to teaching online, so this will be a new adventure and will not be recorded.

The Zoom link for all four weeks is the same. One cost. One link. Four Mondays. Here's the Zoom Link:

<https://us06web.zoom.us/j/86727144430?pwd=0SMRSfVZZEJ5UkFKz3hLNR5QTt51Gx.1>



Combined Worship Service

Lakeside, St. Mary's, Spirit Alive! & Trinity

Christmas Day Worship
Dec. 25 @ 9:00 AM
Lakeside Lutheran Church
3833 8th Ave
Kenosha, WI 53140

Preacher: Rev. Becca Laabs
Offering: Women's and Children's
Horizons



To live stream Christmas Day's
worship, follow the link below using
the included meeting code and
passcode.

Lakeside: Join Zoom Meeting

[https://us02web.zoom.us/j/85630909261?
pwd=sCjNhb5EytZQ14Ne8xajLaCf4YjVp
q.1](https://us02web.zoom.us/j/85630909261?pwd=sCjNhb5EytZQ14Ne8xajLaCf4YjVp
q.1)

Meeting ID: 856 3090 9261

Passcode: 227259

Nurse Sue's in the Office on Tuesdays only. Call 658-3555 for Appointments.

NURSE SUE—ADVOCATE FAITH & HEALTH TEAM—DECEMBER, 2025



DECEMBER

SPACES STILL AVAILABLE. CALL NOW.



GRIEF SHARE: SURVIVING THE HOLIDAYS
is scheduled for Saturday, December 6th,
9:30—11:30 a.m. at St. Mary's Lutheran
Church; 2001 80th Street, Kenosha.

No matter how long it's been since your loved one died, grief can make the holidays a painful time. But there is hope. Join us for an encouraging seminar that will help you survive the holidays and discover new reasons to enjoy them again. The program is free, but registration is required. Call the St. Mary's office at (262) 658-3555 to reserve your spot.



**JOIN AN UPCOMING BLOOD DRIVE AT —LORD OF LIFE LUTHERAN
CHURCH, THURSDAY DECEMBER 18TH**

Want to make a real difference in just one hour? An outstanding gift to give to benefit others. Donate blood and help save 3 lives — it only takes **5–10 minutes to donate**, and you'll be giving someone a second chance at life.

Here's why you should donate:

- **Find out your blood type** (first-time donors will get their results within a week!)
- **Enjoy free snacks** after your donation
- **Save more than one life** with just one donation

Bring a friend and make a lifesaving difference together!

Check out Busting Blood Donation Myths here

<https://youtu.be/qm9DZFrlWQUsi=xGpG26CbzHqtiSS1>

Special December Thank-You Gift!

- Gift a gift get a gift. All presenting donors will receive a \$15 Amazon GC by email.

Ready to sign up?

<https://www.redcrossblood.org/give.html/donation-time?zipSponsor=kenosha&driveType=all>

Let's make a difference together. Donate blood, save lives, and inspire gratitude this December.

*Shalom,
Nurse Sue R.N., F.C.N.
Aurora Faith and Health Team*





HOLIDAY DROP AND SHOP

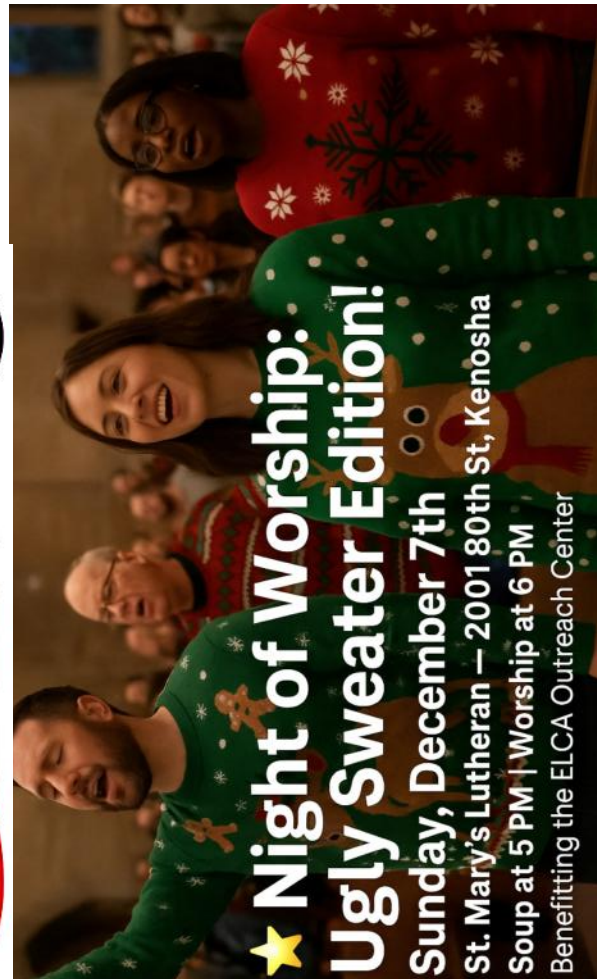
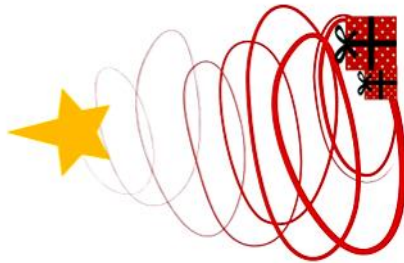
Friday, December 5, 2025 5pm-8pm

Drop your child off for a fun evening of activities, games, arts, and crafts.

Do some Holiday shopping or just enjoy an adult evening out!

Snacks and Juice will be included!

[Drop & Shop link to form](#)



★ Night of Worship: Ugly Sweater Edition!

Sunday, December 7th

St. Mary's Lutheran — 2001 80th St, Kenosha

Soup at 5 PM | Worship at 6 PM

Benefitting the ELCA Outreach Center

Blue Christmas Service

*A Service of Lament and Hope
of Reaching Toward the Light*

Tuesday, December 16th

6:30 p.m.

by the Kenosha ELCA churches.

Held at

St. Paul's Lutheran Church

8760 37th Ave

Kenosha, WI

ANNUAL PRISON MINISTRY GIFT BAG ASSEMBLY

You are invited to join the Church in Society Committee and Pastor David Rebey and the Breaking The Chains Church in our annual event assembling Christmas gift bags for the residents of the Kenosha Correctional Center. The event will be held in *St. Mary's Fellowship Hall at Noon on Monday, December 15th*. No RSVP is required, but the more the merrier. Mark your calendars.

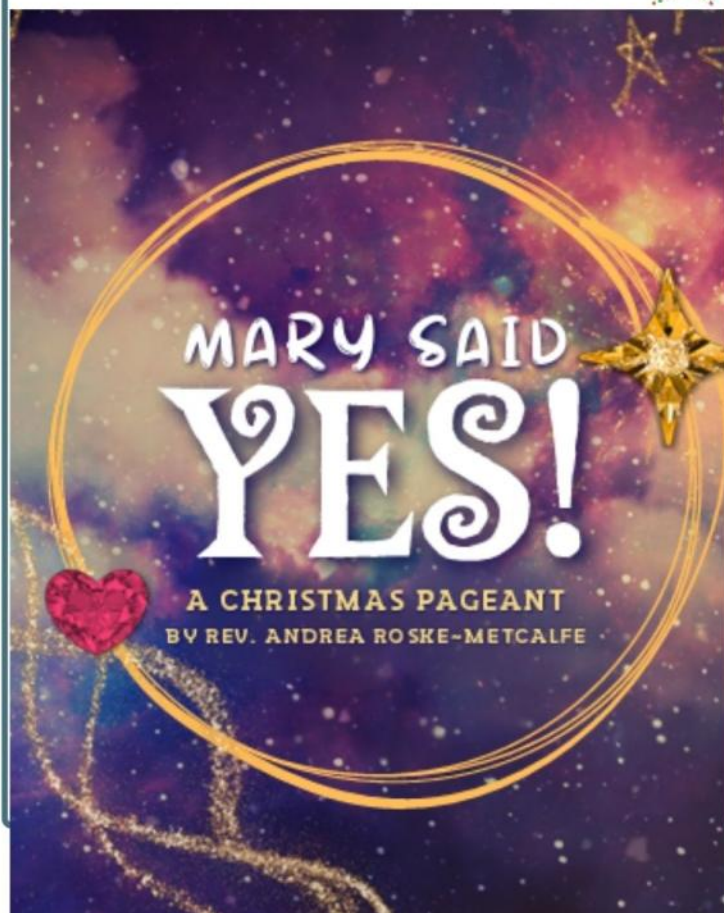
Fellowship Hall at Noon on Monday, December 15th. No RSVP is required, but the more the merrier. Mark your calendars.



SUNDAY SCHOOL DATES

12/7 Sunday School soft rehearsal. Greet first!
12/13 Dress Rehearsal
12/14 Christmas program!!
12/21 No Sunday school / Winter break
12/28 No Sunday School / Winter break
1/4/2026 No Sunday School / Winter Break

December 14, 2025
Christmas program presented by
Sunday School and Family



UPCOMING

December 5

Shop and Drop: SS families & Friends
Drop off your children
for a night out relaxing or shopping.

Time 5p-8p



December 7 Sunday

Greet! 8:40am. All who are able, please come!
Soft rehearsal for the Christmas Program during
normal Sunday school hours until 11am

December 13 Saturday

Full Dress rehearsal 8:30a-11:30a
Practice our lines, sing, and movement
Break will include snacks as well as decorating
Christmas cut-out cookies.

December 14 Sunday

Christmas program! Please be there at 8:30am to
get into our dress for the program.
Kids with able Grown ups will serve cookies etc
after the Program

January 2026 at a glance

January 11th. Greet!
and welcome back P.j.'s / Movie

February 2026 at a glance

February 7-8 Lutherdale Retreat

Contact Info

JOAN OEHLBERG:
Coordinator of Children's Ministry
Email: kidmin@stmaryslutheran.org



High School Calendar
12/3 Outreach Center Service Night — 630pm-8pm
12/10 BINGO — 6pm-8pm
12/17—12/31—NO FUSION

Middle School Calendar
12/1 FISH 630-8
12/8 FISH 630-8
12/15 CHRISTMAS PARTY 630-8

A CHORD WITH THE LORD
Middle and High School Choir

12/3 5:45-6:15 Practice
 12/17 6:00-6:45 Practice

Commitment Forms are due this month for Winter Xtreme

Middle School Winter Xtreme
 January 16th-18th
High School Winter Xtreme



Drop off dates/times

January 3rd 12pm-4pm
January 4th 8:30am-12pm

Sale dates/times

January 10th 8pm-4pm
January 11th 8am-12pm

Have items you no longer need?! We'd love to give them a second home! Drop off your gently used household goods, décor, kitchenware, toys, books, tools, small furniture, and other quality items to sell at our upcoming rummage sale. We do not take TVs or clothes!! THANK YOU!!

ALL ARE WELCOME! Middle and High Schoolers do not have to be members to attend FISH and Fusion!! If you know a middle or high schooler who would like to join us, connect them with Kendra and she will get them the info!!



2025 CHRISTMAS MEMORIALS

**PLEASE RETURN ORDER TO CHURCH OFFICE BY
December 7th**

Poinsettias are in gold foil, 6 ½" pots and each plant is \$ 20.00.
CHECKS PAYABLE: St. Mary's Lutheran Church (poinsettia in MEMO)
We are getting them from Aiello's Midtown Florist.

I/We wish to order _____ poinsettia plant(s) for the altar area.

In honor of:

In memory of:

*I will pick up the plant(s) following the 8:00 p.m. service on Wednesday, December 24, 2025.
Please note: the church office will be closed on 12/24, 12/25 & 12/26. You may get plants at
Saturday, 12/27 or Sunday, 12/28 worship, too.*

I/We wish to give \$ _____ to the Kenosha Welcome Center.
CHECKS PAYABLE TO: Kenosha Welcome Center *[not St. Mary's]*

In honor of:

In memory of:

Given by: _____

Email: _____ Phone # _____

A Message from your Financial Secretary—Cari Richter

For our members who use envelopes for your financial contributions, there will be a bin of envelopes in the East Narthex with packets of 12 envelopes by the end of the month of December.

Please feel free to replenish your supply. Regular and special giving can also be made using the Tithe.ly application. If you have any questions about your envelopes or Tithe.ly, please contact the church office or Cari Richter, Financial Secretary 262-853-2359.



**GET THE TITHE.LY APP
OR SCAN THIS QR CODE FOR
WEEKLY OR ONE-TIME GIVING.
THANK YOU!**



When You Are Sick in Mind, Body, Spirit:

St. Mary's is one of the only church congregations that employs a Parish Nurse/Faith Community Nurse. She has amazing resources, both as a Registered Nurse, and as a Christ-Centered servant. Please call the office and leave a message with how we can call you back.

Do not give any personal, private or symptomatic information to the office.

Prayer Requests: If you have a prayer request for St. Mary's Prayer Chain, contact: Sue VanBendegom 652-1770 and FCN Nurse Sue 658-3555.

When You Are Hospitalized:

- † Please call the church to notify the staff of your admission.
- † Don't assume the hospital will notify the church, even if you have asked them to. Hospitals are very busy places, and some tasks are put off for more urgent needs.
- † Please notify the church office when you are scheduled for surgery (in or outpatient).
- † If you wish to be included in the Prayers of the People, please contact us.
- † We don't mind getting more than one phone call about a parishioner who is hospitalized. Please don't assume that someone else will be notifying us.



We're on the Web
www.stmaryslutheran.org

STAY CONNECTED when unable to join us for worship. You can watch these services online three ways:

1. Like our church Facebook Page
2. Watch Live on YouTube or On Demand (Live videos)
3. Watch videos from the church Website (by Tuesdays)

Treasurer's Report * October 2025

Income Actual.....	\$43,826.30
Expenses Actual.....	\$40,830.66
Results.....	\$2,9985.64

Fiscal Year-to-date 25/26

Income Actual.....	\$173,778.73
Expenses Actual.....	\$177,036.86
Results.....	(-) \$3,258.13

The current Year-to-date percentage of electronic giving to total offerings given is 32%.



**Thank You,
Contemporary
Worship Team!**

Celebration Service
November 9th

"As we bring the contemporary service to a pause for now, we bless you and give thanks to God for the guidance of the Holy Spirit, trusting that new life will come out of what has been before.

For each of you, and for our worship together, we say: thanks be to God."



SUPPER CLUBS for 2026

Sign-up now thru Dec 14, 2025

We're heading into our 17th year for Supper Clubs at St. Mary's. Sign-up between now and Dec 14, 2025! All adults are welcome to join.

Supper Clubs are a great way to get to know our congregation on a more personal and relaxed basis, one meal at a time! You can join either the HOME or RESTAURANT club. The groups meet as often as they like throughout the year.

For more info look for Carole Scotese with a nametag that says: "Ask me about Supper Clubs", in fellowship hall after 9 am services on **Sundays, Dec. 7 or Dec. 14**. If you don't connect with her in church, email Carole at mscotese@aol.com or call her cell 262-994-6958. No texts please.



HOW MUCH?

You are probably wondering how much WELCA has received for the donation drives held this fall.

- † \$1295 was collected for The Meru Orphanage. Many children will benefit from your generosity.
- † \$135 was collected for Lutheran World Relief on Blanket Sunday. These funds are used to offset the large shipping costs incurred to transport the blankets and other care items to those that need them.

As always, when called upon, St. Mary's comes through to help those in need.

Cheryl Hayes, WELCA Treasurer

WE ARE THANKFUL FOR YOU!

The Kenosha Welcome Center is grateful to St. Mary's Lutheran Church for choosing the Center as the beneficiary of this year's Thankoffering collected by WELCA .

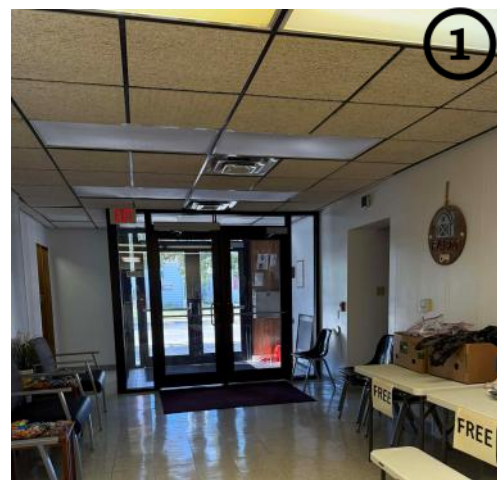
A total of \$638 was collected that will go directly to the hungry and needy in our community.

We need to also THANK YOU for the generous monthly collections of food that you give to the Kenosha Welcome Center as well.

God Bless St. Mary's Lutheran Church.

Photos:

Kenosha Welcome Center's new facility. 1) The entryway; 2) the choice pantry section (also, nearly 200 boxes of food are given out each week); 3) the Executive Director, Denise, standing by the refrigeration system gifted to them by the St. Mary's Lutheran Church Endowment Foundation; 4) a tour of the facility by Lydia Circle.



OPPORTUNITIES @ CHURCH ~ DECEMBER 2025

SATURDAYS, 4PM & SUNDAYS, 9AM

Our weekend order of worship will be available online under “uploaded bulletins, announcements” each week by Friday afternoon.

NOW THE FEAST AND CELEBRATION Join us throughout the seasons on Saturday afternoons for “*Now the Feast & Celebration*” by Marty Haugen. Our group of Assisting Ministers, talented cantors/singers and our musicians will lead worship using this beautiful music on weekends when we will not have one of our pastors available. On some of those weekends, the holy eucharist will be celebrated at the rail by Pr. Becca Laabs. [*this is an alternative to singing “Holden Evening Prayer”*].

ASSISTING MINISTERS An assisting minister is a liturgical leader who assists the congregation in worship and alongside the presiding minister throughout the worship service. Assisting ministers proclaim the word of God in prayer and scripture readings, receive offerings, pray for the concerns of the church and the world. They stand at the font helping welcome new Christians and help distribute the bread and wine. Assisting ministers send the congregation into the world for mission. ***Singers & Non-Singers welcome!***

HOLY COMMUNION will be exclusively at the rail or from your seat until further notice. Gluten-Free/regular wafer, wine/juice offered. Anyone or children who haven't received instruction yet may come forward for a blessing instead. Simply fold your hands when approaching.

USHERING All ages, genders & skills welcome! We will be passing the plate at both services.

WORSHIP GREETERS: Our first impression specialists! Families can sign up! Individuals! Buddies! Sign up with Margaret Van Boven (mav5804@gmail.com)

MUSIC GROUPS

ADULT CHOIR~ The choir rehearses on Wednesdays at 6:30pm in the Choir Room. Contact Dick Sjoerdsma (rsjoerdsma@carthage.edu)

JUBILATE! ~ Join Nathan Larsen and his dedicated teammates for rehearsals Mondays at 5:30pm in the sanctuary. Jubilate! performs the first Sunday of each month: December 7th is next.

“A CHORD FOR THE LORD” YOUTH CHOIR

St. Mary's 6th-12th graders youth choir will meet Wednesdays, 12/3 @ 5:45-6:15, 12/17 @ 6:00-6:45pm in Chapel Lounge.

CIRCLES & SMALL GROUPS

St. Mary's Community Quilters ~

Mondays @ 9:00am (Gym)

Miriam Circle ~ 2nd Tuesday @1:00pm (Lo)

Circle of Friends ~ 3rd Wednesday @1:00pm (Lo)

Women's Book Club ~ Attending the Advent Study

Lydia Circle ~ Off for the Winter

Exercise Class ~ Thursdays @ 4:30pm (G) (not 12/25, 1/1)

MINISTRIES

SUNDAY SCHOOL ~ 3 yr.—5th Grade

The Children's Christmas Program “*Mary Said Yes!*” Rehearsal (12/13) & Program on Sunday, December 14th during 9:00am Worship! Joan Oehlberg's email KidMin@stmaryslutheran.org. You can follow us on Facebook <https://www.facebook.com/smlcsundayschool>

FISH & FUSION YOUTH GROUPS! Kendra Richter's email Youth@stmaryslutheran.org. Check out the Facebook page <https://www.facebook.com/smlcyouthed>

SENIOR MINISTRY ~ St. Mary's *The Friendly Center* (TFC) is a senior ministry that has been around for a very long time. RSVP for the December 17th Lunch at Fireside Restaurant! *Call Lisa Zanin 909-1181 with any questions.*

PRAYER BREAKFAST—Wednesdays, 7:00am Marina Gardens Restaurant. All are welcome. This is now the combination of the Ladies' & Men's groups for one, amazing gathering of prayer warriors.

KEY CONTACTS—WHO DO YOU CALL?

CHURCH COUNCIL 2025-2026 St. Mary's Church Council meets the 3rd Thursday of each month at 6:30pm. **All are 1+(262) unless otherwise noted.** Council liaisons are as follows:

AUDIT/FINANCE

Keith Richter.....948-9020
ktrichter25@gmail.com

CHURCH IN SOCIETY

Patricia Mason.....721-8065
godslittlesinger71@gmail.com

EDUCATION (FAITH FORMATION)

Andrea Beer.....945-5901
beerski222@aol.com

THE FRIENDLY CENTER

Lisa Rasmussen-Zanin.....909-1181
ljanin1953@gmail.com

INFORMATION TECHNOLOGY

Andrea Beer.....945-5901
beerski222@aol.com

NOMINATING

Dana Larsen.....414-748-0448
dana.larsen.wdc@gmail.com

PERSONNEL

Andy Schroeder.....344-1902
amgeoteach90@yahoo.com

PROPERTY

Keith Richter.....948-9020
ktrichter25@gmail.com

RECONNECTION*HOSPITALITY*FELLOWSHIP

Hollie DeFranco.....914-0136
holliedefranco@gmail.com

STEWARDSHIP

Stephanie Raszkievicz.....945-7519
stephrz01@yahoo.com

WORSHIP MUSIC ARTS

Markie Hylinski.....515-3032
hylinskim@gmail.com

YOUTH Sandy Bear.....496-4370
sandymbear@outlook.com

Council Connection for December 2025

Lisa Zanin ljanin1953@gmail.com or 909-1181

ST. MARY'S STAFF: 658-3555 *The Dial by Name directory is set up for FIRST Names except for Nurse Sue—she isn't listed.*

All staff emails ...@stmaryslutheran.org

The Rev. Dr. Jordan Miller-Stubbendick, Lead Pastor

ph. 799-5791 or pastorjordan@stmaryslutheran.org

Rev. Debbie Hartfield, Associate Pastor

ph. 599-5795 or pastordeb@stmaryslutheran.org

Deb Black, organ.....choirmama100@gmail.com

Beth Kerscher, Admin. Assistantext. 300 or bkerscher@stmaryslutheran.org

Art Kotenko, Audio Video Technicianavtech@stmaryslutheran.org

Susan Peet, Bookkeeper.....ext. 323 or bookkeeper@stmaryslutheran.org

Willy Mueller, piano.....sillywilly.m@gmail.com

Nurse Sue, Advocate Faith and Health Community Program/Care Ministry Coordinator.....658-3555 or fcn@stmaryslutheran.org

Kendra Richter, Youth Director.....ph. 287-2483 or Youth@stmaryslutheran.org

Joan Oehlberg, Coordinator of Children's Ministry

ph. 658-3555 or KidMin@stmaryslutheran.org

Dr. Richard Sjoerdsma, choir.....rsjoerdsma@carthage.edu

Nathan Larsen, handbells.....NathanLarsen2012@gmail.com

Church Office Hours:

Mondays/Tuesdays/Thursdays:
9:00am-3:00pm

Wednesdays: Noon—6:00pm

Fridays: 9:00am—Noon

Office will be closed:

Wednesday, December 24th

Thursday, December 25th

Friday, December 26th

Wednesday, December 31st

Thursday, January 1, 2026

Friday, January 2nd

Happy Holidays!

THE SPIRIT

the newsletter of
ST. MARY'S LUTHERAN CHURCH
www.stmaryslutheran.org
December, 2025



St. Mary's Lutheran Church
2001 80th Street
Kenosha, WI 53143
(262)658-3555

WHAT'S INSIDE.	PAGE
Advent & Christmas Events	1
Message from the Pastor.....	2 & 3
Advent & Christmas Events II.....	4 & 5
Message from Nurse Sue/Faith Community Nurse.....	6
NIGHT OF WORSHIP, BLUE CHRISTMAS AND MORE.....	7
Sunday School & Youth Ministry News.....	8 & 9
CHRISTMAS MEMORIALS & POINSETTIA SALES	10
NEWS YOU CAN USE	11—13
Opportunities at Church.....	14
Phone Numbers/Emails of Leadership/Staff.....	15

©The Spirit of St. Mary's Lutheran Church November 29, 2025. Volume 30, Issue 12



ANGEL TREE®

A Program of Prison Fellowship®

Wrapped & Tagged Gifts Due on

DECEMBER 7.

Bring to Worship or

Give to Church Office Before.

Thank You!

