



BETHLEHEM STAR

NEWSLETTER OF BETHLEHEM EVANGELICAL LUTHERAN CHURCH
PEMBERVILLE, OHIO



Pastor's Message

By Pastor Tim Philabaum - April 2025

We have come to the month when God uses bright paint brushes to bless our world with color! Spring makes its best showing in this month, and we rejoice in the beauty of God's goodness.

But this year, right in the middle of the month, is The Week:

We walk with the disciples following Jesus, who is riding on a donkey. It is Sunday morning, and the crowds in Jerusalem are waving palm branches and singing, "Hosanna." Riding a donkey, instead of a horse, Jesus enters the town in peace, but He doesn't find peace – the leaders yell at Him, telling Him to quiet the crowd.

This night and the following ones Jesus and the disciples leave Jerusalem and cross the ravine up to the home of Mary, Martha, and Lazarus. Having raised Lazarus about a week before, Jesus and his friends are most welcome. Monday, Tuesday, and Wednesday they go back into the City, spend time at the Temple, and head back home in Bethany.

Thursday dawns – it's the day of the Passover. By the time of the evening meal Jesus' disciples have prepared space in a 2nd floor room. As this is primarily a family meal, we may assume that women and children were present, as



well as the disciples. When Jesus arrives he first takes the roll of a servant, washing His disciples' feet. This, He said, is what it means to be a disciple – to wash one another's feet, to be servant, to do the acts of love.

Then they begin the meal, with all the beautiful ritual around Passover. At some point Jesus takes the bread and says, "This is my body," then He takes the wine and says, "this is my blood." They all eat and drink. Judas leaves to betray Jesus, but it is unclear in the Gospels if he leaves before this act of Holy Communion. When the meal is over, they go to the Garden of Gethsemane to pray.

Throughout the night, while the disciples are sleeping, Jesus prays that He not have to suffer, but each time says, "nevertheless, not My will but Thine." At some point Judas arrives with soldiers who take Jesus away. The disciples run and hide. He undergoes a trial before Jewish leaders, and then

just about dawn, Jesus stands before Pilate, who questions and condemns Him. The soldiers make a crown of thorns and thrust it on His head; they whip Him 39 times; they mock and insult Him, and then He is led off to be crucified.

From 9am – 3pm He hangs, nailed to the cross, unable to breath. After words of care, forgiveness, and agony, Jesus dies. He is placed in Joseph of Aramathea's tomb, but without the anointing for burial since it is now dark.

Saturday comes. Ah, we've been there. The quiet after a loved-one's death, the wonder when the weight of the world hangs heavy, the emptiness of sorrow and depression.

In this agony, early then on Sunday, Mary Magdalene goes to the tomb to complete the burial and finds the Resurrected Christ. Alleluia! Everything is different, and God has made the way for the whole world to come to salvation.

Brothers and sisters – may this year and this Week be one for you in which you are renewed in the love of God, in which you know the depth that God in Jesus has gone for you, that you know you are God's beloved daughter or son. Blessings!

Table of Contents

Pastor's Message	Pg. 1
Long Range Planning	Pg. 2
North Central Conference ..	Pg. 2
A Chance To Shin	Pg. 2
Lent Schedule	Pg. 2
Financial Office Numbers	Pg. 2
Cub Scouts.....	Pg. 3
Mission Honduras.....	Pg. 4
Council Minutes	Pg. 5-6
Sunday School Update.....	Pg.6
Tree Removal	Pg. 6
Tithe.ly QR Code	Pg. 6
Spring Fling Flyer.....	Pg. 7
Mission Action.....	Pg.8
Food Pantry Needs	Pg.8
Praying.....	Pg.8
Serving in Worship.....	Pg.8
80+ Birthdays	Pg.8
Thank Yous	Pg.9
Kid's Page	Pg.10
Calendar's.....	Pg.11

President

Susie Rahe

Vice-President

Luann Snyder

Treasurer

Renee Farmer

Secretary

Jen Schuerman

220 Cedar Street

PO Box 344

Pemberville, OH 43450

419-287-4182

bethlehempemberville.org

Office Hours:

Mon. - Thurs.

9:00am - 2:00pm

9:00 am– 12:pm Friday

If you need to update your contact information including if you have a PO Box, please call the office or email

office@bethlehempemberville.org

Long-Range Planning Committee

If you or your organization sees a need in the community or the world, please complete a request for funding from the Endowment Fund, identifying how you or your group would use the money. The Long-range Planning Committee will review submissions and disburse money as deemed appropriate. Money will be distributed into categories such as poverty, global missions, congregational support, leadership, and disaster relief. Forms are available in the office and the deadline for submission to the office is June 2, 2025. The decision on disbursements will be made by the end of July.

Spring North Central Conference

May 3, 2025

St. John Lutheran Church, Williston

8:30 a.m. Registration (\$10) and continental breakfast 9:00 a.m.. Bible Study

Speaker: Lisa Eisenbach, founder

Nightingales Harvest

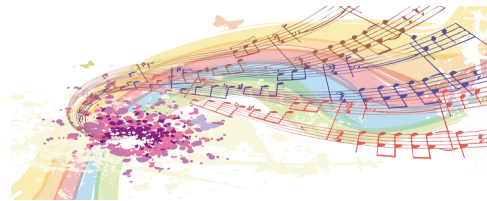
Support for families dealing with cancer.

Kelly Morse, CGC : Advantages of genetic testing

Lunch & more information coming

A Chance To Shine

We would like to enhance our worship services with more musical talent. If anyone would like to share their talents at services during Holy Week, please contact Joe Stribrny.



Lent Schedule

Worship on Wednesdays during the Lenten season will be both at 11am and 7pm. The morning service is designed so that worshippers may attend the Senior Center lunch following worship. There will be an evening meal at 6pm, before the 7pm Worship Service. All of Pemberville will join at Bethlehem for these services, with each congregation planning and preparing the service and the meal. As we are all in full-Communion partnership, there will be Holy Communion at each of the services. "There will be a sign up sheet on the table outside the church office for volunteers to bring soup, salad or desserts for the days Bethlehem is hosting".

As with the Church of the ages we will begin Lent with repentance and the imposition of ashes, leaning on the God of grace

- ♦ April 2 - Faith Luckey
- ♦ April 9 - Bethlehem



BY THE NUMBERS

From The Financial Office

February, 2025	<i>Beg Balance</i>	<i>Deposits</i>	<i>Expenses</i>	<i>Balance</i>
Operating	\$85,062.81	\$23,008.37	\$23,402.78	\$84,668.40
Memorial	\$8,038.18			\$8,038.18
Benevolence	\$16,154.54	\$1,421.00	\$1,300.00	\$16,275.54
Outreach	\$54,793.08	\$967.69	\$7,233.58	\$48,527.19
Pass Through				

Scouting Marches On In 2025

By Russell Eby

The last few months have been busy for Cub Scout Pack 344, and Scout Troops 344 & 9344 all of whom are chartered by Bethlehem Lutheran Church.

The events started on the weekend of January 24 when Pack 344 enjoyed a winter campout at Camp Berry in Findlay, OH. Activities included fire-building, hiking, wood-burning, star gazing and outdoor shelter building. The weekend of January 31 saw Troops 344/9344 participate in the Wood District Klondike Derby at Camp Miakonda. The Troops competed in Scout skill challenges and the sled race.

On Sunday, February 9, Bethlehem celebrated Scout

Sunday. Scouts and families of the Pack and Troops were invited to join us for worship, as well as three Girl Scout Troops that meet in our building. Scouts assisted in acolyting, greeting, reading and offering collection. Scouts and leaders that joined us were presented with a custom stamped leather patch.

On February 21, members of Troops 344/9344 headed to western New York for their annual ski trip. Participants had a fun-filled Saturday of skiing on the hills of Holiday Valley Resort before returning home on Sunday afternoon.

March began with the Pack 344 Pinewood Derby on Saturday, March 1. Cub

Scouts were given a Pinewood Derby kit back in December which consisted of a block of wood, pastic tires and nails (axles). Working with their families and leaders, they then created their car design.

March 8 & 9 saw members of Troops 344/9344 participate in Camp Alaska which is a unique opportunity to experience real winter survival. Scouts and leaders hiked into a campsite with their gear, food and cooking utensils; built a personal shelter that could not be a manufactured tent; and stayed outside for 24 hours while practicing Leave-No-Trace camping.



Mission Honduras



Plans are underway for our May 2025 brigade. I will keep you updated!

Here are some highlights from our January brigade. Your continued support and dedication to helping those in rural Honduras are truly appreciated. Thank you for making a difference!
The Mission Honduras Team

MARCH COUNCIL HIGHLIGHTS



Visitors Present: Paulette Bresler, Scott Schuerman

Observations of living our mission:

- Participation in the tear out of landscaping & the clean-up
- Openness to speak with a member who has concerns
- Strong attendance at Lenten meals

Visitor comments: Paulette Bresler- responding to the comments in February minutes about concerns of Politic in the prayers.

Reports of Officers:

A:Pastor's report: Pastors written report was reviewed

- Pastor shared with council that he has been asked to consult with a church in Bryan one night a month as they start the process of calling a new pastor
- Added a visit with Rose Corns

B:Treasurer's reports reviewed

- Tithley has a QR code. Denise Pickerel will work on creating the QR code to link people to an app to give once or start recurring giving

C: Trustee Report-

1)Fire Alarm- Scott Schuerman reviewed the 2 quotes received for a new fire panel. Johnson Controls for \$15,645.07 and Wadsworth for \$14,788.54. Similar equipment & service .

Motion to accept the Wadsworth bid made by Matt M., second by Dean S.-carried

Scott will follow up with the time frame for the new equipment

2)Roof Repairs- The Integrity bid for replacement shingles is for \$97,982 , the quote for Stone coated steel is \$185,312 (50 year warranty). We will ask them to come back and explain how the steel shingles are installed .They have also given a quote to replace the windows in the education wing. For "Performance Quality" windows the quote is \$52,841 for a total of 53 windows with a double lifetime guarantee. We will also do a walk-through of the building with them to make sure the quote is complete.

3) Landscaping-the removal is complete, stumps to be ground out soon, Duane Peters agreed to help with this. Aden Lee is working on the prayer garden as an Eagle Scout project. Bids for installation of new landscaping were received from North Branch \$20,132 , and Groundskeeper for \$11,284.

Motion to accept the Groundskeeper bid made by Ken G, second by Willy F, carried

4) Locks : McElheney can re-key the building to match the new doors for \$842.17. Additional keys are \$3 each.

Motion to rekey and get 50 keys made by Ken G, second by Willy F., carried

5) Paving parking lot – will call Morelock to go forward with the paving project.

6) Custodian – trustees & President met with the custodian to go over her duties

7) Floor polishing – Tom Ickes can do the hall floors for \$250/hall and the basement for \$1000.

Motion to have him polish the floors made by Willy F, second by Neil K-carried

Committee Reports:

A: Strategic Planning-

Serving our Community

-“Collaborate with other congregations to identify & reach out to unchurched individuals in Pemberville”

1:Develop some devotional materials to include with Snack Pack, food pantry, Scouts & Mission Honduras ministries.

2: Ecumenical committee to reach the unchurched-Sheri Krieger & other local churches are involved in this

3: Shelly Albright is working with Fellowship of Christian Athletes Enhancing member engagement Sent emails to various schools asking for volunteers to share musical talents during holy week. Announcement put in bulletin and news letter to illicit volunteers to share musical talents.

Ensuring a Vibrant Future:

1 . still working on inventory of spiritual gifts of members Luann & Susie

2.Building walk-through to make sure the capital structure is in good shape Going Forward Plan:

1: looking into “sprint teams” who would work on special events. Approx 120 day commitment to create events, organize them & get the word out to members what the events are about & to encourage them to participate.

B: Call Committee-

-finalizing Ministry Site Profile (MSP). Plans are to have the call facilitators and call committee review prior to asking council for approval. The MSP asks if we have a Sabbatical & Paternity leave policies. Guidelines for both are listed in the compensation guidelines approved by the Synod

C: Long Range Planning-

- requests from groups for those funds are coming in

MARCH COUNCIL HIGHLIGHTS



Old Business:

- A. Council Secretary: Brenda Graham has agreed to finish the current term vacated by Jennifer Schuerman's moving starting in June
- B. Landscaping – see trustees report
- C. Preschool update: Insurance policy requirements for them to remain on BLC policy:
 - 1. specific policies need to be in place
 - 2. BLC needs to know their documents are current & accurate
- D. Website hosting – Price designs is no longer offering the service. Using PC net to do the hosting now. Russ Eby is looking into alternatives if needed.
- E. Lenten Dinners: going well, good attendance. We host April 9th, council will provide Salad bar, we will still ask for soups to be donated.
- F. Pastor Tim's 45th year celebration- June 8th. Sonfire will participate in the service & celebration after
- G. Fire Panel – see trustees report

New Business:

- A: Next meeting: April 17th is Maundy Thursday. Meeting will change to the 15th at 7 pm
- B: Membership removal: Pam, Evan and Sean Frankfather have requested to be removed from the membership of BLC. Motion to accept their request made by Luann S., second by Dean S.-carried
- C: Cedar Street- Semi trucks are no longer allowed, they will go through the alley to the south of the church- a village owned throughway. We will ask the village to pay for part of the paving of this throughway.
- D. Fair Board ad- we will make some edits & ask the preschool if they want to be included. Cost is \$150
- Motion to purchase the ad made by Willy F., second by Renee F. -carried
- E: New offering plates to be purchased from Memorial donations for Alton Beeker

Next Meeting: Tuesday April 15, 2025 7pm

Respectfully submitted,
Jennifer Schuerman
Council Secretary

Sunday School

- ♦ No Sunday school on Easter. For grades Pre K– Grade 5 & for catechism.
- ♦ May 4th last regular Sunday school day for grades Pre K-Grade 5 and catechism

Tree Removal

Helpers: Willie Fischer, Josh, Lucas & Landry Gerwin, Ken Gerwin, Lonnie, Neil and Grant Karns, Matt Meyer (not pictured), Duane Peters and Dean Schuerman.



Tithe.ly QR Code

Anyone is welcome to make a one time or reoccurring donation by using the QR code that links to Tithe.ly, Bethlehem's online giving portal. When you scan the QR code, you will be required to set up an account, which only takes a few minutes. There is a small transaction fee for the use of the app. The app will prompt you to indicate your choice to pay the transaction fee or have it deducted from your donation. Thank you for supporting the ministries at Bethlehem Lutheran Church.



Bethlehem Lutheran Preschool



18th Annual

Spring Fling

Raffle

**50/50
Drawing!**

**Silent
Auctions**

Craft Show and Fundraiser

Saturday, April 12th, 2025

10am-4pm

Bethlehem Lutheran Church
220 Cedar Street, Pemberville, OH
Fellowship Hall



Special Guest

Easter Bunny

Spring Photos

5x7 with \$5 donation

11am-12:30pm



Fun for the Entire Family!



Happening This Month: April

April Mission Action Project: Baby Care Kits

Items needed for Baby Care Kit:

2 lightweight cotton t-shirts (no onesies please), 2 long- or short-sleeved gowns or sleepers (without feet), 12 larger receiving blankets 40" by 52", 48 cloth diapers, 24 pair of socks, 12 hand towel, dark color recommended, 24 bath bars (4-5 oz.) of gentle soap (Ivory is a good choice), in its original wrapping

Please make these items new or gently used no stains.

Tips for Baby Care Kits:

- Sizes up to 24 months may be used. Varying the sizes of the clothing items included will make the Baby Care Kit useful as the baby grows.
- Diapers can be made from flannel or even by recycling t-shirts. Visit lwr.org for a Diaper Tip Sheet with instructions.
- If knitting or crocheting receiving blankets, including one knitted/crocheted blanket and one flannel blanket will provide maximum versatility.



Praying...

FOR HEALING AND HOPE

Darla Rahe, Christine (Dee Dee) Sieving

FOR OUR BISHOPS

Elizabeth Eaton and Daniel Beaudoin

FOR OUR MISSION PARTNERS

Sociedad Amigos de los Ninos Honduras,
Missions International (Haiti), Redeemer Church,
Operation Christmas Child

FOR LOCAL MISSIONS

Snack Pack Program, Good Samaritan Fund, Community Food Pantry, Habitat for Humanity,
The Linen Closet, Grace's Place,
Bethlehem Lutheran Preschool & Extended Care, WCOAA Senior Care, Cub Scout Pack 344, Scouts BSA Troops 344 and 9344

FOR ALL YOUTH

Food Pantry Needs Your Help

Please help the Food Pantry stock these needed items in

April:

- Crackers
- Children's Cereals
- Canned fruit
- Dish Detergent
- Body Wash (M & W)

The Food Pantry always accepts non-perishable food items such as canned fruits and vegetables, boxed potatoes cereal and soups. They also accept facial tissues, toilet paper, paper towels, household cleaners, laundry detergent, fabric softener and basic personal items (soap, deodorant, toothbrushes, toothpaste, shampoo and conditioner).

Food for the pantry can be left in the Mission Action Room (111) any time. The bins are located right inside the door on a table.

Monetary donations are always welcomed so that the pantry can restock items as needed.

The Food Pantry is available every Tuesday from 11:00 a.m. to 2:00 p.m., as well as the second and last Saturday of the month from 8:00 a.m. to 11:00 a.m. (excluding holidays) for Eastwood community residents in need of food.



Serving this month in Worship and Beyond

Altar Flowers

Bev Gerwin
Brenda Gerwin

Altar Guild

Wendy Fisher
Denise Pickerel

Office Window

Sharon Nigh

Service Org (Funerals)

Joan Slebos

Help Members Celebrate Their 80+ Birthday!

Celebrate this joyous occasion with the members below by sending a card or give a greeting!

- ♦ 4/5 Mickey Gerwin
- ♦ 4/9 Paulette Bresler
- ♦ 4/15 Evelyn Gerwin
- ♦ 4/17 Jerry Corns

If your 80+ birthday is not included here, please contact the office at 419-287-4182 so we can update our records.



THANK YOU



EASTWOOD LOCAL SCHOOLS

HOME OF THE EAGLES

PO BOX 837
120 E. COLLEGE AVE.
PEMBERVILLE, OH 43450
P: 419.833.6411 F: 419.287.4245
www.eastwoodschools.org

William B. Welker
Superintendent

Monica Leppelmeier
Treasurer

March 17, 2025

Bethlehem Lutheran Church
PO Box 344
220 Cedar St.
Pemberville, OH 43450

Dear Bethlehem Lutheran Church:

The Eastwood Board of Education would like to thank you for your donation of \$250 to the Eastwood High School After Prom.

It is people and organizations such as you that make Eastwood a better place for our children.

Sincerely,

Randy Rothenbuhler
Eastwood Board of Education, President

Ashley Culp
Eastwood Board of Education, Vice President

Denis Helm
Eastwood Board of Education Member

Eric Rutherford
Eastwood Board of Education Member

Darlene Krukemyer
Eastwood Board of Education Member



2199 East Main Street
Columbus, Ohio 43209
614-236-6856
capital.edu/trinity

February 28, 2025

Bethlehem Lutheran Church
220 Cedar St. P.O. Box 344
Pemberville, OH 43450-0344

Friends in Christ:

We write to thank you for your recent gift of \$645.00 to the Lutheran Churches Seminary Scholarship Fund-T120. Your support makes it possible for us to continue to provide an excellent seminary education where theological reflection and practical skills combine to equip our students for faithful and effective ministry in the contexts of today's changing world.

Trinity faculty and staff are hard at work to shape and deliver the education we believe in. Much of this work is brought to fruition through annual gifts from generous alumni and friends like you – people who understand first-hand the impact of faithful and effective church leaders. Your support drives Trinity's mission of forming leaders for Christ's church at work in the world.

We are thankful to you and thankful to God for you and for your continued support of Trinity Lutheran Seminary at Capital University and the Trinity Fund.

Gratefully,

The Rev. Kathryn A. Kleinhans, Ph.D.
Dean, Trinity Lutheran Seminary at Capital University
kkleinhans@capital.edu
614-236-6158

April R. Novotny
Vice President of Advancement and
Chief Development Officer
anovotny@capital.edu
614-236-6565 Toll Free 866-704-0742

Paster Thilaburn & the People 3/3/2025
of Bethlehem Lutheran,

Thank you for the privilege and
honor of sharing the Gospel this past
Sunday. It is a joy to share the day
with you vibrant ministry. I will be
praying that you have a meaningful Lent
and a joyous Easter to come.

Thank you as well for your support
of Genacross and your generous donation
to the Wolf Creek Chapel Fund.

In Christ,



2021 N. McCord Road
Toledo, Ohio 43615
419.861.4965

March 7, 2025

Bethlehem Lutheran Church
P O Box 344
Pemberville, OH 43450

Dear Valued Friends

On behalf of everyone at Genacross Lutheran Services, we want to express our sincere gratitude for your recent donation of \$239.20 for the Wolf Creek Campus Chapel Fund. Your support means the world to us and directly impacts the lives of our Genacross family. Your generosity allows us to continue our mission of "embracing individuals and families with compassionate care and services throughout their journey."

With your help, we have been able to serve over 1700 residents, patients and clients with 372 staff. Genacross provided nearly \$2 million in charitable care and community benefit to those we are blessed to serve. Some of our highlights include the opening of two senior adaptive pocket parks for the residents at our Luther Crest and Luther Woods communities, a new basketball court at our Maumee Youth Center and a new library with bookshelves and tables. Generous donors provided over 700 books to open this library.

We appreciate your dedication to our cause. Your commitment has made a real difference, and we're deeply grateful for your support. We hope you take pride in what we have achieved together and look forward to continuing this journey with you.

If you have further questions about your donation and the impact it has made, don't hesitate to contact me. I am available by phone, 419.861.4964 or you can contact me by email at: migeorge@genacross.org.

With sincere thanks,

Michael A. George, CFRE
Executive Director
Genacross Lutheran Services Foundation

KIDS ACTIVITIES

Connect the dots.



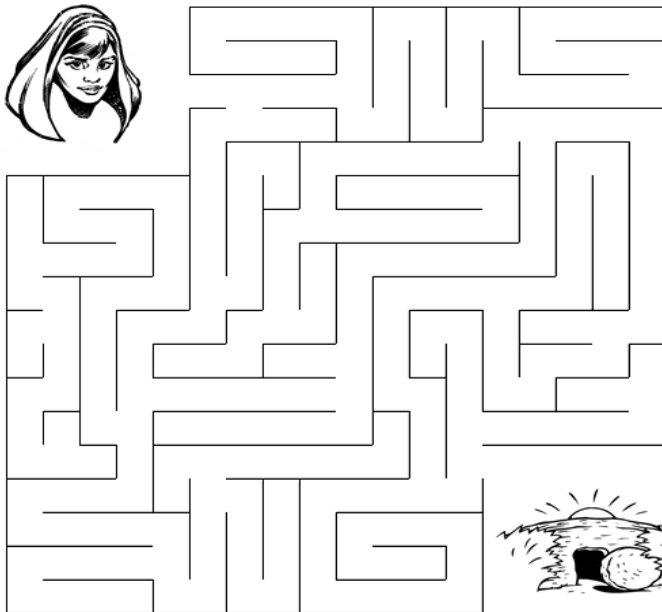
Our Father forgives us.

Like the father in the story of the prodigal son, God rejoices when we return to Him.

The Case of the Empty Tomb

John 20:1-18

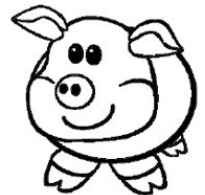
Can you help Mary find the way to the empty tomb?



The Parable of the Lost Son

Bring the fattened calf and kill it. Let's have a feast and celebrate. For this son of mine was dead and is alive again; he was lost and is found.' So they began to celebrate. Luke 15:23-24 (NIV)

The puzzle is based on Luke 15:11-32 (NIV).



H I R E D N D M Y E S T A T E
C W Y Y E X W R E W N M G I O
Q O H B E O T E G E E B Q D H
F T M J N N P M P Q T A B A F
S A S P U O T S Y N C F L P W
T T T O A S D T L Z A Z G T R
A O C H O S R T W P I G S G H
R I O L E E S C F E O M N F N
V M E K P R A I O P F I E E X
I K S O S I X O O D R R K A F
N Q R O K R E G D N F E T S O
G P A R N F X Z O D Q E S T U
Z H A X Q S T O M A C H E E N
G D L N D B H I K I S S E D D
Z S Y T W Z C E L E B R A T E

WEALTH	ESTATE	COUNTRY	PIGS	FOOD
COMPASSION	HIRED	FOUND	FEED	RING
CELEBRATE	STARVING	PROPERTY	FEAST	SONS
KISSED	FATHER	STOMACH	SPENT	LOST

APRIL

Sunday	Monday	Tuesday	Wednesday	Thursday	Friday	Saturday
		1	2 Lent Worship 11:00 am 7:00 pm 6:00 pm Lent Supper 6:00-7:00pm Girl Scout Meeting 5:30pm Bells Following Worship Choir	3	4	5
6 9:00 am Worship In-person and on Facebook/YouTube 10:15am Sunday School/ Adult Bible Study 11:30 am Worship broadcast on 99.1 FM	7 6:45 pm Yoga	8 11:00 am - 2:00 pm Food Pantry open 5:00-8:00 pm Preschool Dad's Night	9 Lent Worship 11:00 am 7:00 pm 6:00 pm Lent Supper 6:30-8:00pm Cub Scout Meeting 5:30pm Bells Following Worship Choir	10 5:30-8:00pm Girl Scout Meeting	11	12 8:00 - 11:00 am Food Pantry open
13 9:00 am Worship In-person and on Facebook/YouTube 10:15am Sunday School 11:30 am Worship broadcast on 99.1 FM	14 6:45 pm Yoga 7:00 pm Priscilla Circle	15 9:00 am Knotting 11:00 am - 2:00 pm Food Pantry open 6pm Bible Study 7:00pm Council Meeting	16 6:00-7:00pm Girl Scouts Meeting 6:15pm Bells 7:30pm Choir	17 Maundy Thursday Worship 11:00 am 7:00 pm	18 Good Friday Worship 11:00am 7:00pm	19
20 Easter Sunday 9:00 am Worship In-person and on Facebook/YouTube 10:15 am Sunday School/ Adult Bible Study 11:30 am Worship broadcast on 99.1 FM	21 6:45 pm Yoga	22 11:00 am - 2:00 pm Food Pantry open 6pm Bible Study	23 6:00-7:00pm Girl Scout Meeting 6:15pm Bells 7:30pm Choir	24	25	26 8:00 - 11:00 am Food Pantry open
27 9:00 am Worship In-person and on Facebook/YouTube 10:15 am Sunday School/ Adult Bible Study 11:30 am Worship broadcast on 99.1 FM	28 6:45 pm Yoga	29 9:00 am Knotting 11:00 am - 2:00 pm Food Pantry open 6pm Bible Study	30 6:15pm Bells 7:30pm Choir			

Bethlehem Lutheran Church
PO Box 344
Pemberville, OH 43450

*Return service requested
Dated material. Do not delay*



Worship

9:00 AM

**In person in the sanctuary and
streaming on Facebook and YouTube**

11:30

Broadcast on 99.1 FM