

# trendings



**October 8, 2025**

*Growing Together in Christ to Love and Serve All People*

## *Prayer of the Week:*

Every drop of water on Earth is ancient. The same molecules that once swirled in frozen primordial seas before the birth of the sun are flowing through us today.

Think about that: the water you sip, the rain on your face, the tears you shed – each is part of a holy circulation older than the stars. God's creation is not disposable; it is eternal, moving, transforming, and accessible in every moment.

So take a sip, take a breath, and remember – you are connected to a love as old as the cosmos.

*Reverend Dana Hendershot*



## Upcoming Greeters and Coffee Hosts:.

*October 12: Howard & Judy Johnson, Greeters*

*Coffee hosts – could be YOU!*

*October 19: Greeters and Coffee Hosts NEEDED!*

Contact Sherry (sherry@salc.church) to be a Sunday greeter or to Host coffee hour,  
Sign up to provide flowers on the Flower Chart in the Narthex.

*Worship is at 10:00 am on Sundays, both in-person and via livestream.*

*Livestream: Visit [salc.church/media](http://salc.church/media) to access the bulletin and livestream link on YouTube. If you have a Google account, we invite you to offer a greeting or comment in the chat window.*

### **Sunday, October 12th at Saint Andrews:**

9:00 AM Adults: Bible Study (1 John)

**Sunday School - (Pre-K - 5<sup>th</sup> Grade!)**

10:00 AM Worship in-person in the Sanctuary and livestreamed

### **Readings for October 12:**

**Pastor Tim Weber, preaching**

**1 Samuel 3:1-21**

**John 20:19-23**

**Tuesday Morning Men:** Every Tuesday at 8:30 AM, this group meets for discussion and prayer via ZOOM.



**Pastor's Bible Study will meet NOT meet on October 14. Pastor Lara returns to Bible Study on October 21<sup>st</sup>!**

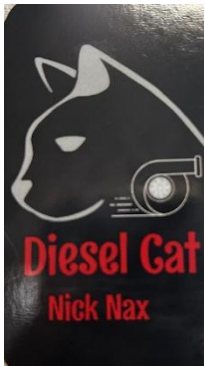
**DORCAS NEEDS BOXES!!** Dorcas Circle needs extra-large shipping boxes to ship quilts to Lutheran World Relief. We prefer boxes that are approximately *2 feet tall*. Boxes can be broken down and brought to church. If you have any question, please contact Linda Willenberg at [willenberglinda@gmail.com](mailto:willenberglinda@gmail.com).

## GRATITUDE!! Lutherfest was great!!

What a fun afternoon we had celebrating Luther and German heritage ... along with raising money for the upcoming Intergenerational Mission trip to Lantern Hill (Ensenada, Mexico) in June 2026!!! So many people to THANK!!!

**Danke to** Gerdy Mende for sharing so much information about Germany PLUS a “conversation” with “Martin Luther” (Kurt Lutterman) 😊 and music by Jon Persson. Our FOOD & DÉCOR TEAM, led by Sherry: Mark Davis (grill-master), Tom & Karen Getzinger, Jan & Kit Bowerman, Liz & Gary Rudolph, Susan & Ashenaki Lulu, Desta Lulu, Steve, Shana & Erik Nielsen (bier-servers), Cheryl Jurrus, Allen Bolen, Johannes Grad, Sarah Cannon and Joan Tweten. Kit & Jan Bowerman (auctioneers); April Daniel (check out); Oscar, Daniel & Luke (worthy raffle assistants);

**THANKS** to everyone who donated items for the auction and raffle!! We had great stuff! Special thanks to the following organizations who donated to our event: Village Theatre, Seattle Symphony, Pacific NW Ballet, Seattle Seawolves Rugby, Diesel Cat jewelry (Etsy), Fair Isle Brewing, Ballard.



**Thanks to all our SALC members who donated!!** Tom & Karen Getzinger, Shana & Erik Nielsen, Liz & Gary Rudolph, Sara & Todd Carmichael, Nancy Davis, Pastor Lara, Ron Ryan, Dianne Chong, Johannes Grad, Jannell Erickson, Sherry Grindeland, Gerdy Mende, Mikel Oswald, Kathy Fisher, Eva Mader, Joyce Nelson, Jean Wahlstrom, Linda Willenberg, Kit & Jan Bowerman.



# Lutherfest!







## Lutherfest!





## Opportunities for You!

**Volunteers keep our church operating.** *Remember – we offer free training!*

Here's a list of opportunities coming up. To volunteer, talk to Fellowship Coordinator Sherry Grindeland at church, via phone at 425-746-2529 or email [sherry@salc.church](mailto:sherry@salc.church).

**Coffee Hosts** – Set up the coffee service and provide treats. People start looking for coffee by 8:40 AM so this is an 8:15 AM start time. Clean up about 11:15 AM, after worship service.

**Sunday School teachers!!** We need **TEACHERS!!!** Can you contribute time to our youngest saints?? They have great, inquisitive minds and are fun to be around!! Curriculum is provided, you just need to like kids 😊 Contact Ann Thorpe ([annthorpe@me.com](mailto:annthorpe@me.com)) to be a teacher!

**Trunk or Treat!** We need 'trunks' (actually an 8' table), and helpers for this fun, family-friendly event! Sign up on the Narthex bulletin board or contact Doug ([doug@salc.church](mailto:doug@salc.church)).



The Health and Wholeness Ministry is excited to share we are planning a **blood drive via Bloodworks Northwest**. It will be in late January 2025, and our Fellowship Hall will be the site.

We will be reaching out to the congregation in the next couple of weeks to gauge interest. They require a minimum of **35 confirmed donors**, and if needed, we will open it up to your friends and the community. **Look for a sign up table in the Narthex** for the next couple of weeks and stay tuned for more information. We also hope to secure a speaker from Bloodworks Northwest to provide general information and answer questions at an Education hour in November. *Terri Anderson*



### **A Taste of Local History \_O.W.L.S. in October:**

The ever-popular local history series continues at OWLS on Tuesday, October 21. *Cristy Lake*, executive director of The Snoqualmie Valley Museum, will be the guest speaker. Her program will highlight the history of the Snoqualmie Valley.

We gather at 11:45 a.m. and enjoy a potluck lunch at noon. If able, please pitch in a dish for the potluck lunch. For more information, contact Fellowship Coordinator Sherry Grindeland at 425-746-2529 or at [sherry@salc.church](mailto:sherry@salc.church).





**"Health and Wholeness" needs volunteers to assist with assembling Health Kits for LWR.**

**When: Monday, Oct. 27**

**Time: 10-12noon**

**Where: South Fellowship Hall**

**Donuts provided!**

This fall the Health and Wholeness Committee is collecting items for **Personal Care Kits**. Lutheran World Relief will give these kits to needy people throughout the world. (including the US) The need is never ending! Help us fill as many kits as we can with the following items. (We did 180 in the spring)

- **Bath towels: lightweight, dark colors, size 20"X40" to 27"X50".**
- **Soap: 4 or 5 oz.**
- **Toothbrushes: adult size. Multi-packs are ok**
- **Combs: Sturdy (no picks or fine-tooth combs)**
- **Nail Clippers: large sizes**
- **Medium size sturdy boxes, which we use for mailing.**

You may put your donations in the bin designated "LWR/Health Kits Items" in the Narthex, or leave on bench in office.

We also accept monetary donations. Clearly mark your check "Kits for LWR" and place in offering plate or mail to Saint Andrews.

On behalf of Health and Wholeness, thank you thank you thank you! *Terri Anderson*



### **Clothing Needed!** From **October 2025 through February 2026**

Dorcas Circle will be collecting men's and women's clothing and toiletries for Compass Housing Alliance in Seattle. There is a 'clothing' bin near the elevator for your donations. **ALL DONATED CLOTHING ITEMS MUST BE NEW, UNWASHED, AND IN UNOPENED ORIGINAL PACKAGING.**

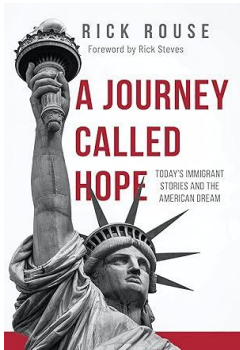
#### **Women's clothing is most needed in sizes Medium through Extra Large.**

- Underwear
- Long sleeve warm shirts
- Sweat pants
- Warm hats
- Warm scarves
- Mittens/gloves

#### **Men's clothing is most needed in sizes Large and Extra Large.**

- Boxer shorts
- White T-shirts
- Long sleeve T- shirts
- Long sleeve warm shirts
- Sweat pants
- Warm hats
- Warm scarves
- Mittens/gloves

## Saint Andrew's Women's Book Group (Formerly WEBS)

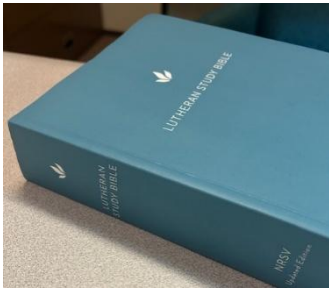


*A Journey Called Hope* by Rick Rouse is our book selection for Fall 2025. The author tells “today’s immigrant stories and the American Dream”. Rick Rouse is a Lutheran pastor, professor, author, and popular conference speaker. He plans to visit our group for one of our meetings in November. We are also looking forward to Bill Brueggemann being our guest speaker on October 15th on Zoom.

We will meet promptly at 10:00 am on **Wednesdays from October 8th** through November 19th. We will end on time at 11:30 am. All women are invited to join us in the Library or on Zoom. We meet together to learn, share our stories, pray, and encourage service. And, we laugh a lot!

*“Author Rick Rouse weaves a tapestry of immigrant experiences - successes, hopes, challenges, and dreams - that have often unfolded amidst global conflicts and political polarization...We discover how diversity enriches America and our faith.” (back cover)*

The book is available through Chalice Press (ask Carol Schneider about a discount code) or Amazon (\$19.99). Contact Cheryl Jurrus ([cheryljurrus74@gmail.com](mailto:cheryljurrus74@gmail.com)) for the reading/discussion schedule and Zoom link.



**Bible Study on Sunday, October 12:** Come to the Fellowship Hall at 9:00 a.m to join our new Bible Study. We will meet once a month to open our Bibles, share our insights, pray, and fellowship together. We are starting with 1 John and we will be looking at Chapter 3. *What does it mean to “love one another”? Who is my brother? Did the apostle John write this to the churches which were struggling? What does this letter from John say to us in the year 2025? What does it mean to know and belong to God?* Your leaders will be Cheryl Jurrus and Allen Bolen. Please join us for this new adventure!

\*\*\* We will have a quick review of 1 John - Chapters 1 and 2. Don't worry. There is no quiz.

**Reformation Sunday Orchestra:** We are going to celebrate **Reformation Sunday** with orchestra and choir. So far, we have about seventeen players in our orchestra for October 26th. If you are interested in being in our orchestra at Saint Andrew's, please contact Will Simpson. ([will@salc.church](mailto:will@salc.church)).



The church staff and Health and Wholeness committee will be undergoing their biennial **CPR and AED class on October 29, 9:00 AM until 12:30**. Church members are invited to join us for the direct cost of \$35 for the class. Please let Facilities Manager Kurt Lutterman ([kurt@salc.church](mailto:kurt@salc.church)) know if you are interested.



# Outreach and Servant Ministries

## **hopelink** Corner of Blessing

### Food of the Months – October & November

This year, again, we will be packing Emergency Bags for the Hopelink Food Bank. So, during the months of October and November, we will be collecting the food items to go in the Emergency Bags. Hopelink has asked that we pack “No-Cook” bags as we did last year. They need these to support those with no access to cooking facilities (homeless).

The items in these bags need to be able to be eaten directly without being heated or the use of a can opener. **All canned items must have a pop-top lid.** These need to be things that can be eaten cold and plain.

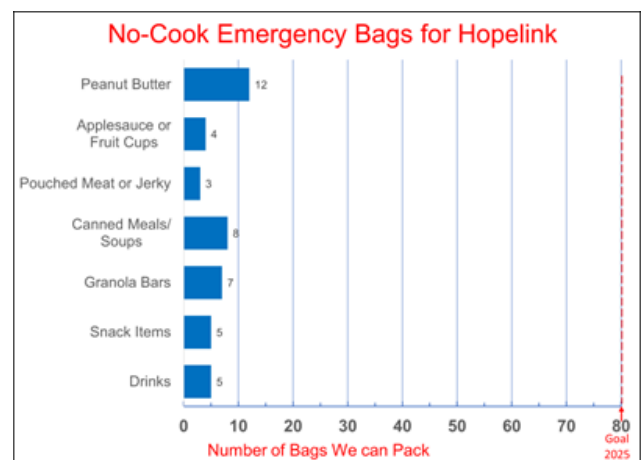
There are seven different items that go in each “No-Cook” Emergency Bag. We will be collecting these items during October and November:

Here are the seven items we will be collecting:

- 1 - **Peanut Butter** – (~16 oz. plastic jar – no-stir)
- 1 - **Applesauce or Fruit Cups Package** – (packages of 4 or 6 cups (about 4 ounce cups), kept in original packaging so that it contains the label, ex: peaches, pears, fruit cocktail, applesauce)
- 2 - **Pouched Meat or Jerky** – (beef jerky or meat sticks (like slim Jims) , pouched meat like tuna, chicken, salmon (Starkist is a common brand). Common sizes for both are about 2.5 - 3 ounces.)
- 2 - **Canned Meals/Soups** – (ex: ~15-20 oz, ex: chili, beef stew, canned ravioli, hearty Progresso soups (such as: beef pot roast, chicken pot pie, Italian Wedding, etc. – **Pop-Top lid**)
- 6 - **Granola Bars** – (look for ones that are at least 150 – 200 calories each – total at least 1,000 calories)
- 5 - **Snack Items** (high in calories & will not crush easily. Ex: dried fruit, nuts, trail mix. Individual packages – look for ones that are at least 100 – 150 calories each - total at least 500 calories)
- 2 - **Shelf-Stable Drinks** – (Something that does not require refrigeration and will not puncture easily. Ex: juice boxes, water, protein shakes.)

**\*\*\*NOTE: Please check expiration dates! These should be on or after February 2026! \*\*\***

On the first Sunday in October, (10/5) bring any of these items. Then watch for the chart to see what items are still needed to be able to pack the most bags. Look for the chart in the Corner of Blessing, the bulletin and in Trendings. Here is an example:





## Outreach and Servant Ministries



### Ministry Focus for October

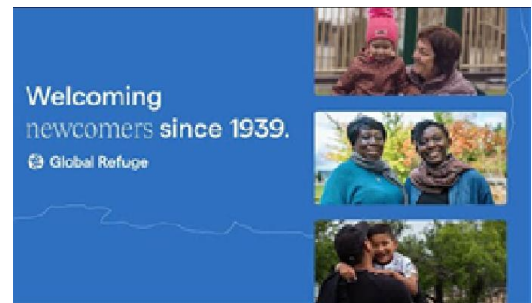
**Most Generous God**, we thank you for all that you provide to meet the needs of all your people. We ask you to watch over, protect and bless those who have come to this country to rebuild their lives. We are thankful for the organizations and people who are dedicated to helping them get started. Bless and sustain them in their work. In Jesus name we pray, **Amen**.

The outreach focus for October is supporting refugees who are struggling to start new lives in this country. Refugees are people who have requested coming to the United States, been thoroughly vetted and have permission from the US State Department to legally enter the country. There are two Lutheran organizations whose objective is to help these people make this transition. They are Lutheran Community Services Northwest (LCSNW) and Global Refuge (formerly Lutheran Immigrations and Refugee Service). These two organizations work closely together to help refugees get settled.

#### Global Refuge:

"For more than 85 years, Global Refuge (formerly Lutheran Immigration and Refugee Service) has provided the resources, guidance, and community to help forge a way forward for New Americans. We're committed to helping people reimagine the possibilities while providing a soft place to land.

With more than 1,000 partners and 50,000 volunteers, we are the largest faith-based national nonprofit exclusively dedicated to helping restore a sense of home to immigrants and refugees. Since 1939, we've built a legacy of compassion by walking alongside more than 800,000 new neighbors as they rebuild their lives in the United States."



#### Lutheran Community Services Northwest:

LCSNW welcomes new refugees to Washington and Oregon and commits to helping them find and set up a place to live, find work, enroll their children in school, find medical care and navigate a new and unfamiliar country. They help refugees to learn English, gain citizenship and become productive members in their Northwest communities.



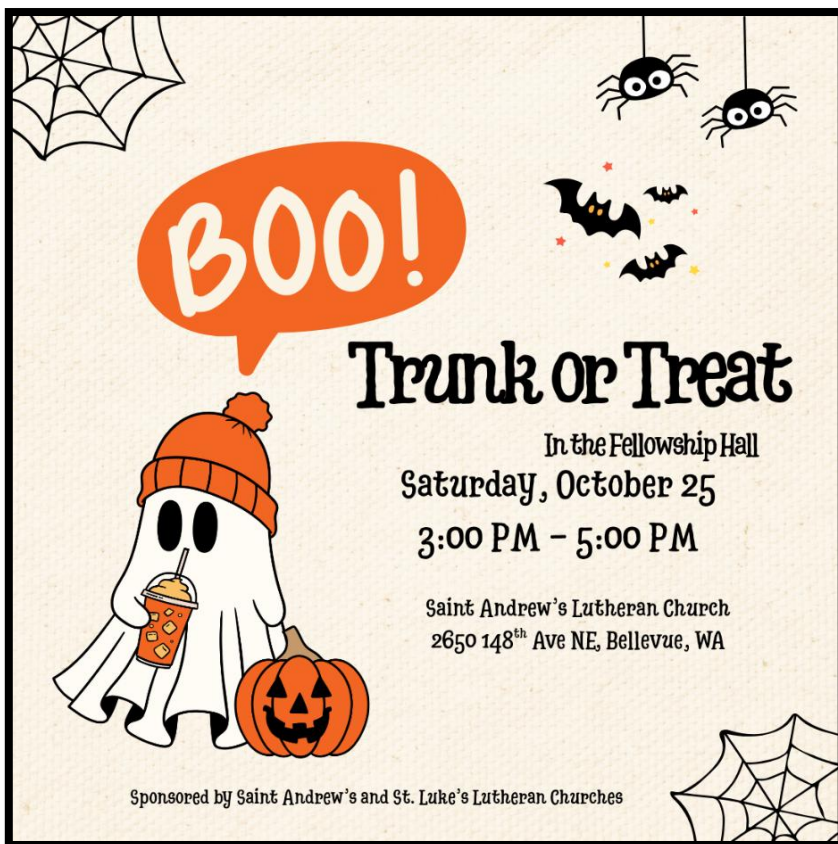
**Saint Andrew's** supports this work through LCSNW with our Outreach budget. Additional contributions from the New Opportunities fund helped with refugees from Afghanistan in August 2021 and refugees from Ukraine in May 2022.



## Youth & Family Ministry Events!!

### 2025 Synod Fall Youth Retreat

All current middle and high school youth are invited to attend the third annual Synod Fall Youth Retreat at Black Diamond Camp, November 7-9. Last year nearly 100 youth and adult leaders from across the synod gathered together and we are expecting at least 100 people participating again this year. If you or your youth are interested in participating, please complete the registration form by clicking [this link](#) or using the QR code. Cost is \$125 per person. Contact Doug for payment information for each congregation. **Sign up by 10/15!**



**It's October!** That means *Trunk or Treat* is coming soon!! Sign up on the Narthex bulletin board to have a 'trunk' (actually - an 8' table in the Fellowship Hall) or contact Doug ([doug@salc.church](mailto:doug@salc.church)). More tables = more fun! Let him know if you can assist in set up, games, food or other adventures for the event!



## ELCC (Eastside Lutheran Church Community) churches, the Synod and the ELCA:

The Eastside Lutheran Church Community (ELCC) has created a new logo and the website has been updated with events throughout the summer to mark on your calendars!

Be sure to check out the website [HERE](#).

**NBCC**  
**Senior Chorus**

Fridays, 10:30 a.m.-12 p.m. | FREE!

The NBCC Senior Chorus is looking for new singers of all skill levels!

Every Friday morning, the chorus gathers at NBCC to sing and build community through music. This is an informal singing club that is open to everyone, no audition is required. With live piano accompaniment, the chorus enjoys a wide variety of music from the 1920s to the 1960s with a focus on classic tunes from the Great American Songbook. Participants may sing with the group, take a solo, or join a duet or serenade.

This is a free, drop-in program; no pre-registration is required. If you love making music and want to connect with some new friends, this could be a great group for you.

**North Bellevue Community Center | Open to ages 55+**  
For more information, contact us at the NBCC front desk at 425-452-7681 or [nbcc@bellevuewa.gov](mailto:nbcc@bellevuewa.gov)

King County  
VSHSL Veterans, Seniors, & Human Services Levy

This program receives funding from the King County Veterans, Seniors, and Human Services Levy intended for those individuals aged 55 or older.

For alternate formats, interpreters, or reasonable modification requests please phone at least 48 hours in advance 425-452-7681 (voice) or email [nbcc@bellevuewa.gov](mailto:nbcc@bellevuewa.gov). For complaints regarding modifications, contact the City of Bellevue ADA, Title VI, and Equal Opportunity Officer at [ADATitleVI@bellevuewa.gov](mailto:ADATitleVI@bellevuewa.gov).

ST. LUKE'S LUTHERAN CHURCH  
PRESENTS  
**LOVE & JUSTICE**  
**Coffee House Night**  
SATURDAY | 10.11.2025  
7:00 pm - 9:00 pm

**OPEN MIC**  
WITH MUSIC FROM THE 1960'S-1970'S

**MUSIC TRIVIA**  
ENJOY WITH FRIENDS & FAMILY

**DESSERT**  
FROM THE DECADES TO TRY!

**COFFEE & TEA**

BRING YOUR FAVORITE MUG  
SEE YOU THERE!

OPEN MIC REQUIRES SIGN-UP W/ CHERI PRIOR TO 10-11-25 AND NAME OF SONG TO BE PERFORMED

**ST. LUKES LUTHERAN CHURCH**  
3030 BELLEVUE WAY NE BELLEVUE WA 98004

MORE INFORMATION  
[|contact.cheri@slukes.org|](mailto:contact.cheri@slukes.org)



## CALENDAR

### Wednesday, October 8

10:00 AM Women's Book Group

### Thursday, October 9

7:00 PM Choir Rehearsal

### Friday, October 10

*Office is closed.*

### Saturday, October 11

### Sunday, October 12

9:00 AM Adults: Bible Study

Sunday School

10:00 AM Worship

### Monday, October 13

1:00 PM Staff meeting

7:00 PM Congregation Council meeting

### Tuesday, October 14

8:30 AM Tuesday Morning Men

7:00 PM Bell Choir

### Wednesday, October 15

10:00 AM Women's Book Group

### Thursday, October 16

7:00 PM Choir Rehearsal

### Friday, October 17

*Office is closed.*

### Saturday, October 18

### Sunday, October 19

*Quilt Blessing*

9:00 AM Adult Education, Coffee

Sunday School, Preschool – 5<sup>th</sup> grade

10:00 AM Worship

11:00 AM Knit Wits

### Monday, October 20

1:00 PM Staff meeting

7:00 PM Discipleship Committee Meeting

### Tuesday, October 21

8:30 AM Tuesday Morning Men

10:00 AM Pastor's Bible Study

11:45 AM OWLS lunch

7:00 PM Bell Choir

### Wednesday, October 22

10:00 AM Women's Book Group

7:00 PM JEDI committee meeting

You can access our  
weekly online calendar  
HERE.

**The Reverend Lara Forbes**, Lead Pastor  
pastor@SALC.church

**The Reverend Timothy T. Weber**,  
Shared-Time Pastor  
timwebertt@yahoo.com

**Dr. Will Simpson**,  
Director of Music Ministries  
will@SALC.church

**Doug Johnson**,  
Director of Youth and Family Ministries  
doug@SALC.church

**Sherry Grindeland**, Fellowship Coordinator  
sherry@SALC.church

**Kurt Lutterman**, Facilities Manager  
kurt@SALC.church

**Kathy Fisher**, Communications Director  
kathy@SALC.church

**Vanessa Wilkie**, Handbell Choir Director

**Elaine Koga**, Choir Accompanist

**Soren Lester**, Facilities Set-up

**April Daniel**, Records Administrator

**Ann Thorpe**, Sunday Church School Coordinator

**Joan Tweten**, Kitchen Team

#### SALC Family Social Media Accounts:



#### Find us on:

