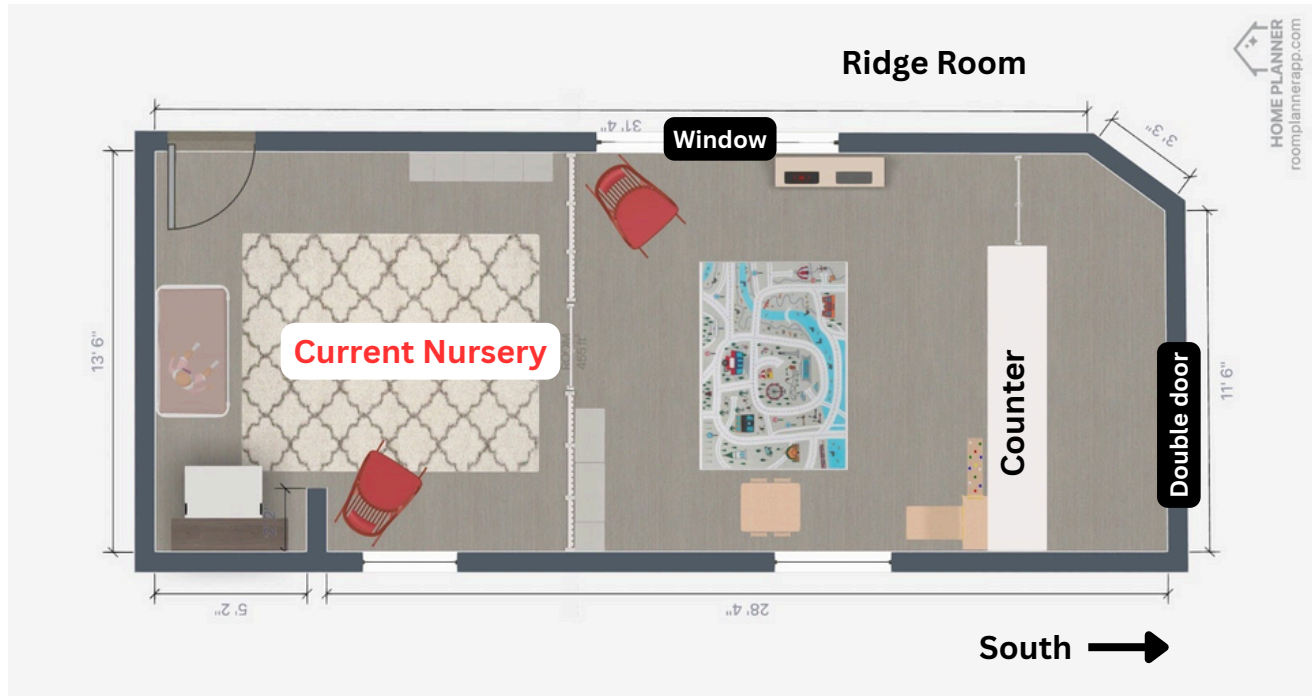
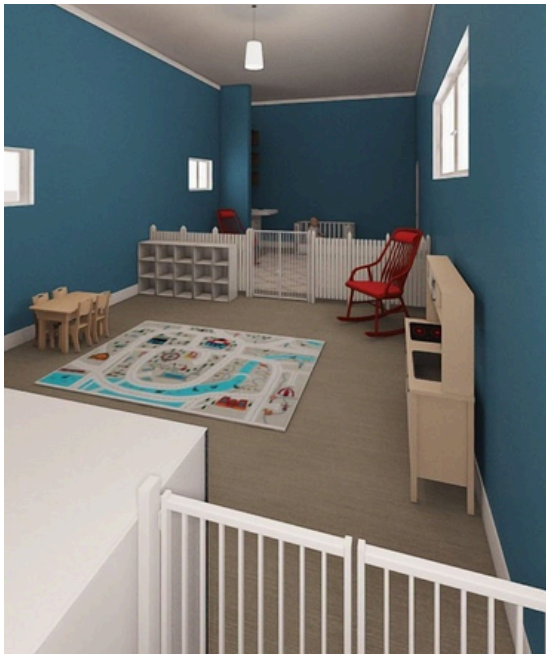


Nursery Expansion Proposal

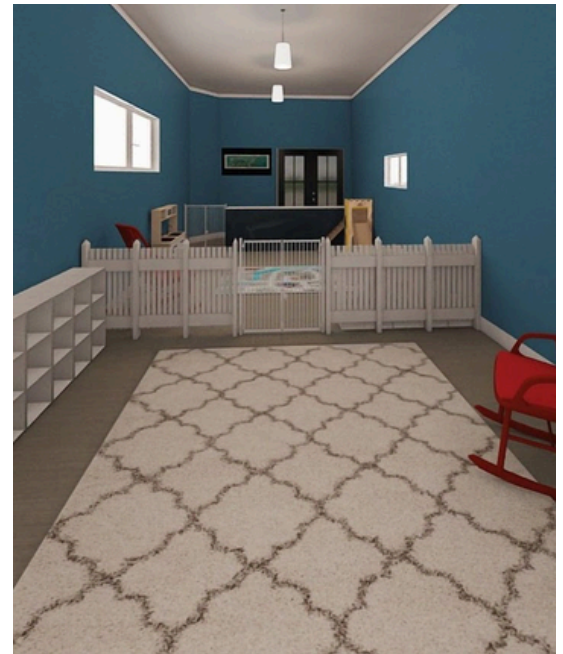
Tentative Floor Plan & Design



Sample Floor Plan*



North View



South View

*Note that this floor plan may be subject to minor changes.

Estimated Budget

Nursery Expansion

Proposal:

The current proposal of the nursery project is to expand the nursery's current footprint south, into the Ridge Room. A new south main entrance would be created. The expansion would approximately double the current size of the nursery.

Phase One:

Fasteners, Wood Framing, Trimwork, Sound Batt, Sealant & Caulking, Windows & Doors, Drywall, ACT Ceiling (616 SF), Interior Painting (10 gal + misc), HVAC Ductwork & Diffusers, Electrical Re-wiring & Outlets (Labor included)

Estimated Material Cost: \$6,240

NOTE: The goal of Phase One would be to have a safe, usable nursery space (walls, floors, doors, lights, etc.) without added features (counter tops, new flooring, furnishings, etc.).

Contracted Labor (Optional):

Estimated Labor Cost: \$3,700

NOTE: Estimate includes demolition, framing, hang and finish drywall (no paint), doors, window, cabinets and countertops, half-door, drop ceiling, lights (no wiring).

Phase Two:

Cabinets & Counters, Flooring (labor included), Rugs, Furnishings/Storage, Baby Fence, TV/Video Systems, Toys

Estimated Material Cost: \$5,273

A Membership Meeting to vote will be held on October 12th after the Service to vote on this project!

Total Cost (Phases One, Two): \$11,513

Total Cost (Phases One, Two) + Construction Labor: \$15,213