



PEACE PROCLAMATIONS

Prince of Peace Lutheran Church ♦ 1747 W. Milham Ave., Portage, MI 49024 ♦ Phone: 343-3453

July 20, 2025

Visit www.popportage.org for the weekly POP Announcements, schedule of volunteers and calendar.

In need of prayer? Contact: prayer@popportage.org

WELCOME TO PRINCE OF PEACE.

You will find a Welcome Table in the Gathering Space with information about our ministries and our life together. Hearing Aid devices are available from the Ushers. Newsletter Deadline is the **3rd Thursday of the month.**

SUNDAY EVENTS

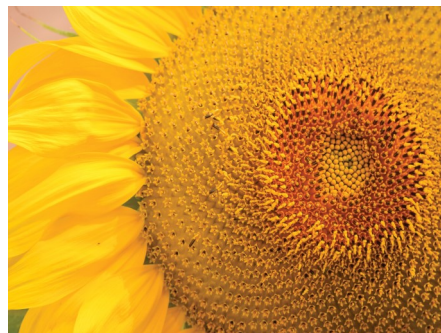
Synod Prayer Partners

You will find today's letter to be signed on the table in the Gathering Space.



Thank you, Pastor Zachariah!

We appreciate you stepping in for Pastor Rachel while she is on sabbatical.



COMING THIS WEEK

Wine tasting
at the Round Barn is



COMING NEXT WEEK

Registration is Open!

Sign up your kids, grandkids,
neighbor kids, any and all kids!

August 4-8, 6-8pm.

Come and see Noah, Abraham, Esther and many others from the bible. Celebrate with them as they are recognized with a star on the Walk of Faith!



Postcards and glossy posters are available in the Gathering Space. Take a few to help spread the word.

See our website or Facebook page for more information.

COMING SOON



Rally Day September 14

Faith Formation for All begins at 9:15am.

Wear your new POP shirts to Rally Day.

See other side for ordering instructions.



THIS WEEK AT POP!

Sunday, July 20

10:30a Worship
11:45a Fellowship Time

Monday, July 21

5:30p AA "Promises" Support Group - Social Hall
7:00p Worship Committee Meeting - Zoom

Tuesday, July 22

9:15a Staff Meeting
11:00a Literacy Tutoring - Library
7:00p VBS Leader Meeting

Wednesday, July 23

11:00a Literacy Tutoring - Library
10:00a WMU Center for Disabilities
11:00a Pastor's Bible Study - Zoom
7:00p Christian Education Committee

Thursday, July 24

10:00a Youth retreat

Friday, July 25 Office Closed

10:00a ESL Open Tutoring

Saturday, July 26

Sunday, July 27

10:30a Worship
11:45a Fellowship Time



Use this QR code to make your contribution to Prince of Peace. Just follow the instructions when you scan the code.

SOCIAL CONCERNS INFORMATION



If you would like to make a financial donation, the best place is the Kalamazoo Refugee Resource Collaborative (KRRC), you can go directly to the website to donate:

<https://kalamazoorefugee.org/>

- ◆ **Plyarning!** Our mats are now going to Ethiopia. We need your clean dry cleaning bags. Bring them to the church if you have them!

FOR YOUR INFORMATION



POP Pop-Up Shop is OPEN

The Pop-up shop is open for those who would like to buy some Prince of Peace wearables.

You can purchase unisex t's, hoodies: zip and pullover, crewneck sweatshirts and youth shirts.



We have picked two color choices for you: royal blue or sport grey.

Order and pay by August 10, then they are be shipped here for distribution.

Paper forms are available for those without a computer or the technologically challenged.

Use this link: [POP Portage Apparel 2025](https://popportage.org/pages/sign-ups--11) or the QR code.



Today is the last day to sing up for August in the Gathering Space. On-line will be live tomorrow!

Roles to be filled. . . *acolyte, worship assistant, reader, usher, communion assistant, prayer station, nursery volunteer, tech assistants, or fellowship host(s).*

You will be trained &/or paired with an experienced volunteer! Sign up for the position, and day you want to serve.

Sign up link! <https://popportage.org/pages/sign-ups--11>

The Extended Ministries Endowment Committee still has funds available in 2025 for disbursement to potential extended ministries that are not supported by the operational budget of POP. The amount still available in 2025 is \$5,359.36.

All requests are carefully evaluated by the Endowment Committee. The committee welcomes written requests with the following information: 1) Name of requestor (POP member) 2) Name of extended ministry 3) Brief description and potential impact of the ministry 4) Amount of monies requested. The Endowment Committee will then review the request and determine if monies will be distributed. Please contact Mark Clyne via email (markclyne@sbcglobal.net) or any of the other Endowment Committee members (Carole Nelson, Joyce Stout, Mike Wathen, Alex Baas-Peterson) or fill out a paper form available from the church office with any requests and place them the Endowment Fund mailbox in the workroom. If you use a paper form, please notify an Endowment Committee member as we currently do not monitor the mailbox regularly.

Please submit your request at least 1 month in advance of the need for the money to allow us to process your request.



In need of Prayer?

Send your request to our prayer team at prayer@popportage.org

Prayer Corner

In Our Thoughts and Prayers

Those with Health Concerns

- Pam Timm - hospital
- Pete Eldridge - back surgery
- Others with Concerns:
- Judah Pederson - cancer - Tom & Nancy Pederson's grandson
- Larry Meier - bone cancer - Gloria Beatty's nephew
- David Green - cancer - friend of the Seguins
- Lauren - cancer - Joeline Pederson's daughter
- Wendy - complications from surgery - Angie Copeland's sister
- Heather - complications from surgery - Angie Copeland's sister
- Shirley Butz - heart issues - Idy Stemaly's mother
- Lynnesy - cancer - Lynne Wathen's sister-in-law
- Joshua Morgan - emotional issues - Tamara and Jim's grandson

Those with Ongoing Health Concerns:

- Jolaine Snyder
- Eric Lehman
- Marlowe & Diane Crocker
- Angie Copeland
- Cheryl Thomas
- Diana Reames
- BJ Stark
- Dianne Zurawski
- Kathey Oosterwal
- Gena Baldwin

Those Grieving

- Family & friends of Christopher Morris - brother-in-law of Jim and Sandy Foster
- Family & friends of Bill Butz - Idy Stemaly's father
- Family & friends of Peter Nitz - friend of Don & Sue Jones