

The 222 History Corner - Bellevue Baptist Cemetery Connections -

If you are looking for an opportunity to enjoy the June weather, I invite you to explore the historic cemeteries associated with Bellevue Baptist Church. You can visit the "new" Bellevue Baptist Cemetery, the "old" Bellevue Cemetery or the "oldest" Middle Creek Baptist Cemetery. I will use the terms "new, old and oldest" to differentiate between them, since the names are very similar. However, even the "new" cemetery is old enough to have six generations of my ancestors buried there.

The "old" Bellevue Cemetery is the smaller cemetery located in the sharp turn near the store in Bellevue. It is open to the public. When you are there, look for the gravestone of Albert Corbin. He was a fifer in the Mexican War and later served in the Civil War. His son, M.J. Corbin, was the church clerk and, in 1884, was chosen to be the first superintendent of the cemetery. Although closely connected to the cemetery and church, M.J. Corbin was not buried in either Bellevue cemetery. In 1883, the church appointed a committee of trustees to take charge of the cemetery and to report to the church concerning its upkeep.

As you continue on KY18, you will come to a larger "new" cemetery, called the Bellevue Baptist Cemetery. It is open to the public. In 1897, the church purchased five and one half acres of ground from Mr. Michael Clore and laid out a beautiful new cemetery. The cemetery is separate from the church, but connected in many ways. The Bellevue cemeteries are funded by an endowment, donations and the sale of burial plots. There is still a cemetery committee of trustees. Dan McNeely has been the caretaker/director of the cemetery since around 1985, with help from his wife Diane. When you are there, look for the brick and wrought iron fence that was forged at the Cincinnati Iron Works. Also, look for the mausoleum of Sebern Brady, who was a church clerk, deacon and ancestor of many current church members.



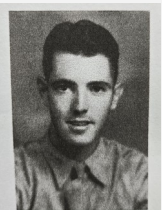
Gravestone of Albert Corbin in "Old" Bellevue Cemetery and a picture of his son M.J. Corbin



Mausoleum and drawing of Sebern Brady

um of Sebern Brady, who was a church clerk, deacon and ancestor of many current church members.

There are many veterans buried in the "new" Bellevue Baptist Cemetery. Make sure to look for the Veterans Memorial that was dedicated by Bellevue Baptist Church in 2003. On June 29th, Bellevue Baptist will have a special veterans church service where we will honor veterans. We will display a historic flag in memory of WWII veteran James E. Rogers. He was a member of the Bellevue Baptist Church and is buried in the "new" Bellevue Baptist Cemetery. He was called "Nooner" by friends and family. Eighty years ago this month, he died in combat on June 10th, 1945. He was only 23 years old.



Corp. James E. Rogers

Veterans Memorial dedication plaque and a picture of Corp. James E. Rogers

Lastly, the "oldest" cemetery is the Middle Creek Baptist Church Cemetery. It is located off of Middle Creek Road, near the site of the Middle Creek Baptist Church. This cemetery is only accessible through private property. The church has permission to hike to the site on June 14th. If you go, you can look for the few gravestones still visible. The names on the stones are David S. Ryle and his son Alexander Ryle, William Garnett, and Ezekiel Rice and his wife Frances Rice. William Garnett was an early church clerk and deacon. It is likely that many other early church members were buried here, or in other family cemeteries nearby. There is not much left of the old church and cemetery, but it is a great reminder of how much our church has grown in 222 years.



Gravestone of William Garnett

These three cemeteries remind me of the many past church members that faithfully served their country, church and community.

Mary Casper



Bellevue
BAPTIST CHURCH

6658 Fifth Street
Burlington, KY 41005
www.bellevuebaptist.org