

Message 59:
Lost and Found Pt. 2
Luke 15:11-32

1

Focus question

What does the parable of the Prodigal Son teach us about lostness, repentance, and the heart of God?

2

1. The two sons represent two different ways to be lost.

3

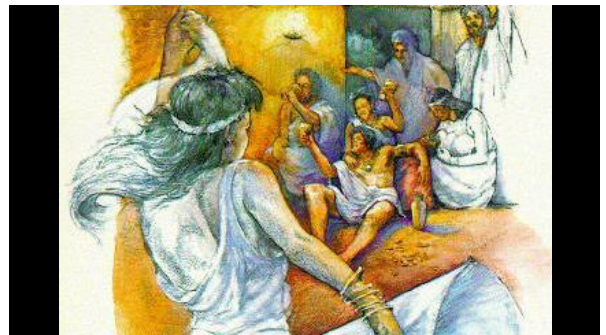
Luke 15:1-2

Now the tax collectors and sinners were all drawing near to hear him. ² And the Pharisees and the scribes grumbled, saying, "This man receives sinners and eats with them."

4

a. Being lost by rebellion.

5



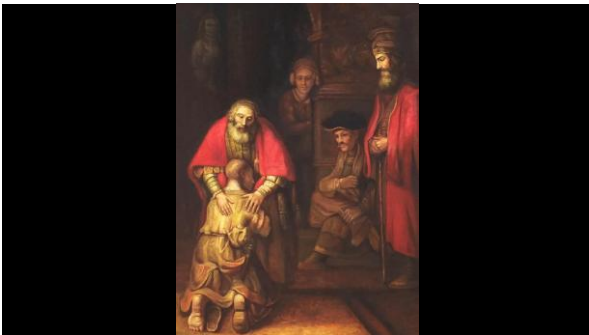
6



7

b. Lost by rule-keeping.

8



9



10

1. The father represents God who . . .

11

a. Does not coerce a relationship.

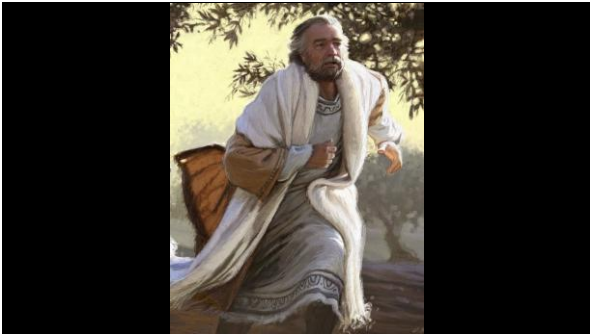
12



13

b. Joyfully welcomes a returning child. . . No matter what.

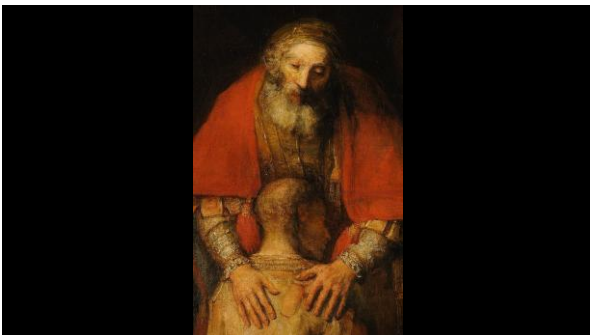
14



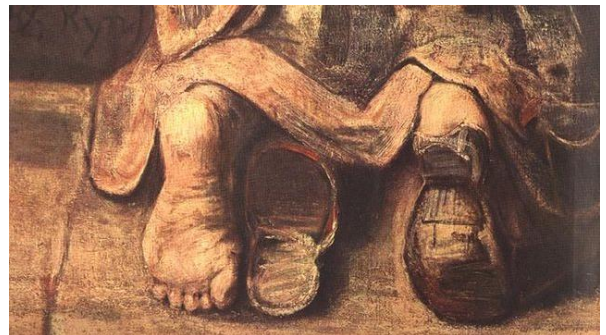
15



16



17



18

c. Continually offers relationship as an alternative to rule-keeping.

19



20

Application questions

If you are lost because of rebellion, will you repent and return? If you are lost because of rule keeping, will you acknowledge you are lost and join in the father's joy?

21