

# TIMOTHY LUTHERAN CHURCH

## ANNUAL REPORT 2023

FROM OUR NEIGHBORHOOD TO THE NATIONS



1 THESSALONIANS 5:11  
THEREFORE ENCOURAGE ONE ANOTHER AND  
BUILD ONE ANOTHER UP, JUST AS YOU ARE  
DOING.



And Jesus came and said to them,  
“All authority in heaven and on earth  
has been given to me. Go therefore and  
make disciples of all nations, baptizing  
them in the name of the Father and of  
the Son and of the Holy Spirit, teaching  
them to observe all that I have  
commanded you. And behold, I am with  
you always, to the end of the age.”

Matthew 28:18-20

## MISSION

Timothy Lutheran Church is a culturally diverse St. Louis City church serving as a bold witness to the saving grace of God through Jesus Christ.

## VISION

From our neighborhood and to the nations, Timothy will embrace the God-given value in all people by listening to others, loving as Jesus has loved us, living a daily faith in Jesus Christ, leading others to find healing for their lives.

## VALUES

Welcome the Lost  
Embrace Unified Diversity  
Practice Authentic Worship  
Empower Servant Leadership  
Inspire Individual Outreach

# BEHIND THE SCENES

Rejoice in hope, be patient in tribulation, be constant in prayer.

Romans 12:12

Our church management software is called Breeze. Members can update their information in one place, we can follow up better with visitors, giving options are more available, and volunteer management is more consistent.

You can update your own personal information at:  
<https://timothystl.breezechms.com>

You can setup online giving at:  
<https://www.timothystl.org/give>

This is our first year with our current staff. Pastor Dinger, DCE Mark, our Music Director Jinah, Monica as our office assistant, and Matt as our pastoral assistant. We continue to find the most effective and efficient ways to steward the resources that God supplies in order to accomplish the ministry before us.

The **commercial property** is quickly paying off its debt. It currently operates financially independent from Timothy. This next year it will return an annual payment back to Timothy \$26,000. We estimate that within 8 years it will return at least \$60k/year back to the Church's operating budget. We give thanks for the foresight of our leadership to purchase this property when it was made available several years ago.

The vast majority of our ministry is accomplished only by the long and dedicated hours generously given by our **committed team of volunteers**. Over 50 volunteers are regularly involved in carrying out the ministry of Timothy. And to you we give our thanks!



(K-8 enrollment is up to 222, up from 163 last year, and up from 129 in 2020-21, preschool is at 50 students. We are committing new funds to our admissions and advertising to attract new students who are looking for what WOL has to offer. We continue to experience turn over of staff, often due to the reliance on the spouses of seminary students to fill positions.

Word of Life was awarded the “Best Private School” from the Post-Dispatch.

Principal Bergholt has finished her masters degree in school administration, and has been nominated for administrator of the year from LEA. Preschool Teacher Bolling has also been nominated as an early childhood teacher of the year.

Timothy is committed to supporting our teachers by giving opportunities for members to purchase classroom needs that are typically paid for out of the teacher's pocket.

We continue to provide tuition support for student members, with additional tuition aid as requested and needed.

Word of Life is promoted in all of our outreach. We are committed to the value of strong Lutheran education and know that a high quality education, in a strong Christian environment, that supports families and embraces the cultural diversity of our city is attractive and desirable to those in our community whether a member of our congregation or not.

Our staff are active participants in religion courses teaching a topical class once a week, leading chapel in both our preschool and K-8 campus, volunteering with sports, musical programs, and other extracurricular activities.

Finally, give thanks to those Word of Life teachers that are members at Timothy: Sara Poppitz, Anna Clayton, and Laura Thompson (who received the teacher of the year award from LESA). They are each a blessing to WOL and to Timothy. Let them know that you are praying for them, as they are daily sharing the love of Jesus with their students and families. We give thanks to God for these Ministers of the Gospel.



# Timothy Lutheran Church

## Mother's Day Out

We have served 179 children this year. Our program continues to support working parents when finding flexible childcare is a challenge.

### What parents are saying:

- *"You guys are wonderful! We are so grateful for the time and energy y'all put forth in loving our kid (and all the other kids!) and making him feel known."*
- *"We are so grateful for how W. is cared for by you specifically but the whole staff as well."*
- *"Thank you so much for taking care of C., we know he can be a little high maintenance!"*
- *"We talk about it all the time. Nothing is more valuable to us than knowing that they're cared for so well and that they love you guys."*

Mother's Day Out has grown nearly four times over, and expanded the ages of children that we care for and so are more able to serve parents with child care.

While many care facilities closed in the past few years, we have stayed open once the shut down mandate ended. We have a great reputation in the community. This gives us new opportunities to share the gospel with families that have no church community as we have chapel for the children each week and make every effort to invite families not only to worship but to other activities to be able to build relationships with Timothy families.

We were able to enroll 9 MDO children into Word of Life preschool this year. This is the largest group we have ever had before. This was through intentional promotion of the school, joint activities with the school, and a stronger working relationship among all of the teachers.

We said goodbye to our long time director, Kara, as she took a new position closer to her children's school. We have an interim director until the end of the school year and so are exploring new ways to oversee this great outreach ministry.



## Lindenwood Area Senior Ministry

This time of year lends itself to reflecting on the past and looking toward the future. As we embark on the New Year, Lindenwood Area Senior Ministry would like to share some of its 2023 highlights in numbers!

- LASM celebrated its 17th Anniversary of ministry for, to and by seniors!
- 25 LASM Transportation Ministers provided 99 round-trip rides to medical appointments to 40 registered participants.
- 17 Saturday Servant volunteers + volunteers from several service groups completed 138 home maintenance/repair projects among 85 registered households.
- A 1st time Swing into Summer outdoor concert was held.
- 37 older adults reached out for resources and/or engaged in ongoing case management services via our expanding Case Management Program.
- A Lenten Walk to Jerusalem program logged 7,371 miles by its 73 participants.
- 15 tables of attendees helped our 12th Annual Trivia Night return to in-person with a bang!
- 24 social and educational programs offered a variety of opportunities such as day trips, musical entertainment, health/wellness presentations.
- 10 Stephen Ministers provided 1:1 weekly caring visits. 3 new Stephen Ministers were trained and will be Commissioned on January 15th!
- 700+ individuals received monthly newsletters full of LASM news and community resources.
- Team of 60+ volunteers gave countless hours to allow all of the above to happen!

We remained strongly rooted in our mission to enhance the quality of life of senior adults by providing meaningful volunteer experiences, services and programs that promote physical, mental, emotional, and spiritual health and safety. We are so grateful to have the unending and generous support of our volunteers, partner churches and donors in making our ministry possible! Please contact our office (314-647-4591) at any time for information on programs, services and volunteer opportunities. In addition, we welcome your suggestions on programs and events that you would like to see offered in 2024. "Like us" on Facebook or check out our website at [lasministry.org](http://lasministry.org) to stay up-to-date on all our latest happenings. Wishing you good health and many blessings in the New Year!

We are blessed by two dedicated staff members who, while part-time, accomplish more than most full-time people! We are so blessed by Katie and Leigh in their compassion and dedication to the seniors of our congregation and of our neighborhood.



Since the Missouri Synod's earliest days, the women of its congregations have organized to assist schools, orphanages, and hospitals; collect clothing and furniture for the poor, fund mission work at home and abroad, and more.

The idea to unite these local efforts into a national organization originated in the 1920's, and was realized in 1942, when the first convention of the Lutheran Women's Missionary League (LWML) was held in Chicago.

Since that time, the LWML has contributed millions of dollars and countless hours of effort in support of the work of the Church, both at home and throughout the world.

January      Winter weather hiatus

February      Annual LWML Prayer service of South St. Louis ZONE churches hosted at Timothy with Opening Prayer by Pastor Dinger. WIM members provided post-service hospitality time in Narthex.

March      Jane Cauchon introduced new program sending birthday cards to congregation members 80 years and older.

April      WIM members purchased supplies, cooked and served congregation Lenten Dinner of chili/soups, and accompaniments.

May      WIM's final monthly meeting and close of LWML's 80th anniversary year celebration. WIM provided TLC youth confirmands with personalized Prayer book, confirmand's names written in calligraphy by WIM member, Joan Castellano. Mother's Day, WIM members created colorful bookmarks for laminating and handing out to all women of the congregation at Mother's Day Sunday services. Coffee & Donuts hosting with TLC gym table displays -- LWML founders vintage portraits displayed with 80th anniversary year banner and LWML promotion materials with info on Missions & Grants, Mite boxes, Milwaukee biennial convention in June and Introduction of Mailbox Member program.



June/July/August -- WIM solicited get well cards from TLC congregation for Ann Hessler, a former LWML St. Louis Zone President and Timothy member. WIM organized viewing party of the LWML biennial convention closing program presented by KFUD's Lutheran Ladies Lounge. Acknowledged Father's Day during Coffee & Donuts with creative poster display. MailBox Member program announced prior to Fall rollout—4 new sign-ups. Supporting TLC's "From our Neighborhood to the Nations" theme, WIM provided financial registration support to a newly formed Papua New Guinea Christian/Lutheran women's group.

WIM's President and Secretary leadership retired with no candidates for either leadership office. A restructuring effort will continually be identified to more equitably distribute workload procedures from these roles thru the 2023-24 fundraising/event year as activities are planned giving consideration to the decreasing number of women available to work labor intensive events due to health considerations.

2023-24 Anne Mangels provided "Generation to Generation" meeting themes for monthly meetings Annual October LWML Sunday church service with MITE BOX offerings. Timothy's WIM hosted South St. Louis Zone churches for Fall Rally with opening prayer by Pastor Dinger and audio visual help by Mark Thompson. WIM Christmas market Cookie Booth Sales – 74 boxes of Christmas cookies were sold with the proceeds of \$740 going to Timothy's Food Pantry. Women In Mission thanks all who baked and/or purchased Christmas cookies.

BEAR ONE ANOTHER'S BURDENS,  
AND IN THIS WAY YOU WILL  
FULFILL THE LAW OF CHRIST  
(GALATIANS 6:2, NRSV).



*34 years  
of care*



Stephen Ministry offers a proven and effective way to organize, equip, and supervise a team of congregation members—called Stephen Ministers—to provide high-quality, one-to-one, Christcentered care to people in the congregation and the community experiencing life difficulties. Stephen Leaders are trained to provide ongoing leadership for our Stephen Ministry.

Stephen Ministry multiplies blessings throughout the church and community. **In short, Stephen Ministry helps carry out the mission of our church by bringing Jesus' love to our neighbors.**

This year we had an Epiphany Party at the Dost's home in January.

Continuing Education courses in 2023:

- (1) Adult Bible Class: Caring for people by sharing Hope and Forgiveness, as well as teaching people how to be on the lookout for care receivers
- (2) Ministering to Those Who are Grieving using the Journeying through Grief books
- (3) The Ministry of Presence joint workshop with LASM and South Grand Senior Ministry
- (4) Adult Bible Class: The Gift of Empathy
- (5) Caring for those with cancer using Cancer—Now What?

Christmas Market: We gathered 38 prayers requests and spoke with many more of our Timothy neighbors. We also gave out 4 Cancer—Now What? Books.

In 2024 we will hold another Stephen Minister training class beginning in August. We also hope to identify and train 2 new Stephen Leaders.

**Supervision:** Meets monthly

**Continuing Education Topics in 2023:**

Reviewed Caring for the Caregiver

Hosted a workshop on good boundaries Managing Tough Conversations Around Boundaries with LASM, speaker Ann Garrido

Reviewed the Ministry of Presence

Reviewed boundaries and learnings from workshop

Reviewed how to close a caring relationship

Reviewed the Supervision process

**Christmas Market:**

For the second year we are having Stephen Ministers available at the Christmas Market. We gathered prayers from many more of our Timothy neighbors.

**Grief Ministry:**

Sent Journeying through Grief caring books throughout the year to 6 families.

**Care Receiver Quotes:**

When things seemed like too much to handle, my Stephen Minister brought normalcy and calm. With him by my side, I knew I could make it from one week to the next. I could feel God's presence when my Stephen Minister was there.

When I was with my Stephen Minister, I felt Jesus was with me. I saw the love of God in her eyes while we talked and prayed, and it would fill me with such comfort and peace. It helped me know that I could make it through.



# TIMOTHY URBAN BEEKEEPERS

PROVERBS 24:13

EAT HONEY, FOR IT IS GOOD,  
YES, THE HONEY FROM THE  
COMB IS SWEET TO YOUR  
TASTE

7 TUB members extracted a combined total of 758 pounds of honey this past July & August - a 20% increase from last season.

At the annual Weichnauktmarkt TUB sold \$400 of honey and wax products. We also had 16 visitors sign-up for the email distribution of TUB activity, and 2 of those were interested in having TUB assist them in starting apiaries. Total email recipients is 80

We are most thankful that one TUB member who is a non-member of Timothy liked what he saw in our church and is now sending his son to our preschool and his other children to MDO. This ministry is connecting to all different needs of people, and in doing so we are provided with opportunities to share the good news of Jesus.

If you would like to learn more about this ancient yet timely hobby contact TUB leaders Tim O'Neill or John Hagan. They'd love to teach you the joy and rewards of beekeeping.

PROVERBS 16:24  
PLEASANT WORDS ARE A  
HONEYCOMB,  
SWEET TO THE SOUL AND  
HEALING TO THE BONES



Noah continues to bring a ministry of presence, while he is getting older, he is still quite active and effective. He has brought his ministry of presence and the comfort of God's love to thousands this year. The fruits of which are warmly felt. And we give thanks for that "personal care" that comes from his handlers especially from Sue and Glenn Nielsen, who truly make this a successful and impactful ministry.

Team Members who helped this year: Mark and Laura Thompson, Ruth McDonnell, Amanda Bello, Marcia Bello, Diane Saleska, Rick and Marla Steenbock, Andy and Morgan Berg.



## Noah's Visits in 2023

### Regular Repeated Visits:

- He attends most worship services at Timothy. He visits Word of Life's Timothy and Ascension campuses most weeks when school is in session.
- He's often at WOL, including the first and last days of school and open houses.
- He stops by Lutheran High School South.
- He stops by Mother's Day Out program to visit the little ones.
- He comes to the campus of Concordia Seminary.
- He has visited Young in Spirit adult day care center ever since he arrived in 2014. He goes 1-2 times a month.
- He goes to Hand in Hand adult day care center monthly, usually once a month.
- He goes to United Cerebral Palsy adult day care center, usually twice monthly.
- He goes to Laclede Groves living senior center, usually twice monthly.
- He goes regularly to Brentmoor, another assisted living center.
- He goes regularly to Salem Lutheran School
- He visits Ascension Lutheran Church.

### Here are Many of His Special Requested Visits in the Community:

#### January:

Lutheran Schools week visit to St. John's, Arnold, Village Ladue, Zion, Belleville  
 Funeral visitation and funeral for Rick Myers  
 Girl scout troop in High Ridge, MO  
 Joplin, MO, for commissioning of Daniel Comfort Dog

#### February:

Night to Shine in Jackson, MO

March:

- CCLS pre-school at Concordia, Kirkwood
- Youth retreat at Lake of the Ozarks
- Funeral service for family member from Rockwood Elementary, Arnold, MO
- Easter Egg hunt

April:

- Tyler Kern's school
- Presentation at Missouri Athletic Club
- UMSL nursing school

May:

- Stress relief for students at St. Louis University at Crave Coffee House
- Noah's 10th birthday party at Timothy's coffee and donuts
- In Chicago for Megan's training to be a handler

June:

- VBS at Ascension
- At Trader Joe's following a death of a worker

July:

- VBS
- St. Mary's Physical Therapy Dept
- Abiding Savior summer camp
- Lutheran Church Charities National Conference in Chicago

August:

- Stepping Stones at Camp Wyman in Eureka, MO. This is are weekend retreat for children who have lost a relative sponsored by BJC Health Center.
- Lutheran High School in Springfield for funeral of student
- Operation Fun at CPH
- Bass Pro Shop (fun visit)
- Grace Day at Pevely, MO

September:

- Noah's 9th anniversary celebration in Timothy parking lot.
- Concord WEE pre-school (Baptist) presentation on two days to seven classes.
- LESA at Webster Gardens
- St Louis Arc (people with developmental disabilities)
- Funeral visitation in Ballwin, MO
- South County Mall (shopping visit)
- Immanuel, St. Charles to meet new president of LCC

October:

- Share Walk for parents who have lost a child at birth in one way or another in St. Charles, MO.
- Kirkwood Middle School after Halloween party shooting
- Girl Scout meeting in Fenton, MO
- LWML Zone Rally at Timothy

November: (Quiet month – just his regular visits)

December:

- Christmas market.
- Two visits to Crave Coffee House to help SLU students distress at end of semester.
- Soup supper
- Visit to Gene and Linda Lehr

# YOUTH & FAMILY MINISTRY

## Children & Families

We continue to serve children and families in a way that encourages faith at home. This year we formally connected to the Missouri District's Discipleship Coaching to help congregations support parents as the primary faith educator role. We called this new discipleship emphasis Faith Active in the Home (F.A.I.T.H.). But the emphasis on learning faith at home really came to the forefront during COVID and as we figured out how to continue to do Sunday School with parents as teachers and later worked out how to resume teaching back in church. That came with the transition step of having households do Sunday School together around a table in the gym. Finally with the return to groupings by grade, we implemented a closing time instead of opening. In Sunday School closing parents are invited to attend and children share what they learned in the day's lesson. The rationale for closing is to create a bridge to ongoing learning at home as parents ask questions and children continue to share. Parents are invited to use the take-home page where lessons learned can be incorporated into daily devotions and life applications throughout the week. In this way education at church and home are working in concert and growing in faith is a daily routine and not a weekly box check.

Sunday School attendance has been recorded faithfully by Sue Koch for many years, and it was remarkably consistent in 2023. We average just over 17 children in Sunday School, even during the summer months. This goes back even further to Rally Day 2022, and our summer change-up with family style lessons around tables in the gym. One of our strengths is stability in terms of teacher retention. Our Sunday School teachers do a great job in their care, preparation, and teaching from year to year. Megan Enderle is new to the teaching team this year, and is partnering with Sue, who was her Sunday School teacher back when she was that age.

In March the Egg Hunt outreach, our 26th year in Lindenwood Park, was well attended. New this year was the Bubble Bus. We also flipped the concept of Egg Hunting. Children hunted and found empty eggs which is a great connection to Easter's empty tomb. After collecting a dozen or so eggs, kids turned them in for their bag of candy and other giveaways. They get the same amount of candy as they did in the past ways of egg hunting, but there was less concern of some children not getting their allotment due to competition for eggs. We can thank Holly for giving us this new enhancement to our day of outreach.

In July, we tried a new concept with our VBS. We went to more of a day camp style where families can pick a track for their student's activity time. Kids all had the Bible Story time, opening, closing time and snacks, but they choose between music, sports and crafts for their activity track. VBS this year showed a nice increase in attendance from the previous post-covid year and offered more engagement during the activities and sharing them with parents on Friday Family Night. It was a blessing to have Jinah and her talents in the music track, and their demonstration of music learned on instruments the children made was really something to see!

Our first Game Night for all households brought out 5 families on Nov. 18, and we received really positive feedback from a number of families, even those who weren't able to attend this date. This is a positive indicator that this event is one that will draw families when we do it again. Game night and an intergenerational crowd help connect households of all kinds and also encourage families interacting together not only for fun games but also in faith engagement.

# YOUTH & FAMILY MINISTRY

## **Increasing Children & Family Ministry Engagement and Outreach Between Ministries**

We were blessed with great connections with our music ministry and our outreach efforts. As the number of children and families participating in music ministry grows, we are connecting them to children's ministry events and celebrations. The music ministry made a big impact on our VBS with the music track this year. That included neighbor children who came to church specifically to get involved in the kids choir, and that family chose the sports track in our VBS.

Our Sunday School Christmas program included children and some youth and instrumental accompaniment to share some wonderful music on Dec. 10. That was also tied to outreach with our Giving Tree project. Jinah Knapp's music ministry has really enhanced our family ministry and so many children are getting involved in sharing their faith through music and growing in their ability to share this with others. It is great to see music and education ministry complimenting each other and helping grow our connection with longtime and new families

Preschool chapel continues with both our ministry staff and other church leaders leading this weekly Jesus time for children and teachers/staff. Word of Life Christian education connections continued this year with a topical religion class series. Pastor Dinger has been teaching the 7th grade and DCE Mark has been teaching the 8th grade. The instruction is a 6-8 week series in the Fall, and another one in the Winter/Spring before Lent begins. We continue to lead chapel at the main campus. Noah Comfort Dog also is a bridge to connecting with students and families of all grades including Preschool and Mothers Day Out.

Other aspects of ministry to families and children include first communion instruction and acolyte orientation. Matt Gerzevske led the first communion class this year which included a parent in the instruction.

## **Children/Families Looking Ahead to 2024**

We will continue, with the help of our Family Discipleship Coaching, to enhance the supportive connections for faith growth and activity between church and home. This is the clear intent of Scripture for the family, where we find the importance of teaching God's Word in household discipleship from Deuteronomy 6:7

*"You shall teach them diligently to your children, and shall talk of them when you sit in your house, and when you walk by the way, and when you lie down, and when you rise."*

## **YOUTH**

Coming out of COVID last year we made the decision to combine Jr. & Sr. High ministry into one room and many events with both age groups. The impact on youth ministry has led to some good leadership by older youth as they welcome and mentor younger youth. This welcome included Sunday Bible Class, which includes reading and discussing the Bible, sharing snacks and highs and lows from the week. Younger youth have become more confident in participating and sharing during this time. Younger youth also get to see leadership of older youth and learn how they can be leaders down the road as they become senior youth. One of the years highlights was our mission trip which



## YOUTH & FAMILY MINISTRY (CONTINUED)

was our first combining Jr. and Sr. Youth together. The trip we choose worked well for our group. We were on of 5 teen groups serving. A number of things were done together such as the Bible studies, meals, and campfire devotions. The team building, work projects and activity groups were divided by Jr. and Sr. Youth, which helped both age groups work and play and grow within their own levels of maturity. I am very proud of our group and how they worked and grew as a church but also in their connections and friendships made with teens from other churches/schools.

### **Some of the Youth Events in 2023**

Lazer Tag Jan 21 at Edge in Belleville

Youth LEAD Retreat Feb 18-20

Shrewsbury Lanes Feb 25

Youth Lenten Meal Fundraiser, Mar 1

Youth District Retreat Mar 24-26

Youth Serve at Egg Hunt Outreach, April 1

Easter Breakfast Fundraiser, April 9

### **Youth & Kids Serving**

Serving and fun events often are combined in one event, but specific ways youth and kids served in 2023 at Timothy are: acolyte, worship slides, Egg Hunt/VBS, Shine Event, Easter Breakfast, Mission Trip, leaf raking, etc.

### **Confirmation**

Confirmation at Timothy this year has been enlivened by a new group of 7th graders and the return of our six second year confirmation students due to be confirmed Pentecost Sunday in 2024.

Also new this year, the families have taken turns providing a meal for the students and parents. This is a practical help as class starts at 12:30pm and many families were at the late worship service. It has also provided great fellowship opportunities for students and families to connect in conversation and sharing.

Erik Herrmann and Jessica Bordeleau continue to help with instruction, partnering to teach some of the units.

### **Youth Sunday Class**

We are also blessed with consistency in our Youth Bible Class instruction, with Gary Krekow and Amanda Myers continuing to partner in leading each Sunday morning. Fellowship and snacks are also a part of the routine, and it is also a time for sharing upcoming events and encouraging each other through sharing prayer requests that are prayed for Sunday and throughout the week.





# WORSHIP



One of our goals is to involve as many as we can in the leading of the music and worship at Timothy. This is our corporate worship and so it belongs to us all. We believe the more that are involved the deeper the worship life of the congregation will be.

This year we have put a great focus on our children's ministry, especially by engaging our children in leading the music of the church. From special solo pieces during the offertory, to our excellent children's choir, and newly this year an overwhelming response to the addition of a children's chime choir. Children from our school, neighborhood and church are involved, from kindergarten through High school. We give thanks for this great blessing.



**Our Handbell Choir** continues to be a creative outlet for a variety of people in our community, and brings a wonderful meditative aspect to our worship life.

Our African Choir shares with us each month a different piece of music, sharing a cultural touch point that we then work to incorporate into our wider known songs as a congregation. This is a wonderful unique piece of Timothy's worship life.

Our Maranatha (Praise Team) is a place for a variety of people to share their musical gifts. We seek to bring currently composed music to Timothy. We have in the past heavily relied upon seminary students to provide leadership in this area, but now are seeking how we can do this more consistently year over year.

Christmas Caroling  
Sang at over 30 homes in the neighborhood.

Concert Series  
Four concerts held this year



# WORSHIP



We went Christmas Caroling again in our neighborhood and sang at over 30 homes in the neighborhood. It was a great evening with people of all generations in our congregation singing the joys of Christmas to others.



Concert Series. We held four concerts held this year that were free to the public. We look forward to doing so again in 2024, bringing high quality music to be accessible to all people.





# WORSHIP



## **Involvement with other ministries**

Serving the meal together for the mid-Advent service helped the Adult choir to learn from each other and strengthened their fellowship. Helping Sunday school Christmas events helped Jinah to learn about other children outside of children's choir members.

In addition, Jinah regularly taught a music class at WOL preschool, and hopes to communicate to our students that God's worship will always be very important to their lives.

## **Inviting the congregation to serve the neighbors with music**

Christmas caroling enabled the congregation to experience sharing the Gospel with music to the neighborhood. The members who showed up were enthusiastic, and full of ideas for how to improve this event in upcoming years.

## **Education from the organ bench**

Organ literature has a long history, and it always goes hand in hand with the church's history. Church music implies theological understanding through music. We try to communicate with our congregation and share not only the joy of the music, but also the ways music can lead us to a fuller knowledge and love of God. This is the primary reason for the short musical notes being shared in the bulletin.

In all of this we are thankful for all those who bring their gifts to make our worship vibrant and uplifting for so many: lectors, elders, musicians, organists, acolytes, powerpoint operators, live-streamers, and bell choir. We are truly grateful for your servant hearts.



# CARE IN THE NAME OF CHRIST

Through the **Food Pantry** we serve over 40 families every first and third Saturday. Much thanks to Shirley, Joan and Richard for weekly collecting the food and organizing the ministry. We also thank Jim, Tina, Annabella, Judy and many others who come on the Saturdays to help the distribute the food to those who need this support.

Every Sunday evening we have a team of volunteers who pick up the **unused bread and pastry items from our local Panera Bread**. Each year this totals 1000's of pounds of bread that is kept from being thrown away and is used to supplement and feed many households in our community.

We held our **annual Scrap Metal Drive** during April which serves our community by keeping tons of recyclables out of the landfills and helps people remove these items that they would have a difficult time of disposing.

We hosted our second **Paper Shredding Event** in April, and while the weather was cold and rainy, we had hundreds of people come to have their documents securely shredded. An estimated 4000 pounds of paper was shredded that morning.

We hosted our first **Electronic Waste Recycling Event** in April. This was a huge success as several tons of e-waste was collected, and around 100 tube TVs were collected were properly recycled and kept out of landfills, polluting the land and water.

We helped **21 people paying 32 different bills** (e.g. Spire, Ameren, transportation, custody fees, tuition, housing) totaling \$17,548.37





This was another great year at the Christmas Market. We had over 70 vendors and approximately 1000 people from the community come and have a great day. We were blessed with great weather this year as well.

We made several upgrades to our parking lot and other items through a grant from St. Louis Lutheran Foundation. We look forward to next year and all the people that we will get the opportunity to meet and interact with, being a positive presence in our neighborhood.





# PAPUA NEW GUINEA MISSION

We're getting excited about returning to PNG and wanted to let you know some of the things in the works for this term. After spending a short time with our kids in San Diego and Bangkok (including Anya's Baptism) we will arrive in PNG on January 18th. School starts at the beginning of February, but Ron is hoping to do two pastors' inservice programs in more remote areas of the church--Kandep and Mendi. We'll be staying with pastors in those areas. They have asked me to offer studies for the women, so I'm hoping to do some interactive classes on women's health. Back at the Seminary, it usually takes a week or so for all the students to arrive. The first year men need mattresses, blankets and a plate for meals. When possible, we give each student a solar light. The Papua New Guinea Mission Society has helped put solar lights in the classrooms for night study and we have lined the walls and ceilings so that it's not so noisy in rainy season--things we don't think about when starting classes in the U.S.! This first term, Ron will be teaching Pastoral Theology, Genesis and Homiletics. I'll be helping with music and possibly Health.

The PNGMS carpenter and his nurse wife, Roy and Judy Schache, will be with us for the first 60 days while Roy finishes the teacher's duplex which he started last year. We need more space for teachers and students as we prepare to add an English curriculum to the current Pidgin curriculum at the Sem.

We have been told that the tribal fighting in our area has ended and we hope that is the case! It will be interesting to see where the people who previously lived in the fight area have gone. The "losers" have no claim on their land--homes or gardens--so they re-establish themselves in other areas.

I will update you when we actually get to PNG. We really can't tell you how much your prayers mean to us. Know that you are in our prayers every day. We try to focus on different families each day. May God keep all of us in His care!

Love and our prayers,  
Pastor Ron and Mary Anne





# PROPERTY

Many things are accomplished with our property without much notice, and that is a great thing! It's when you notice a problem, that it is a major (costly) problem. The following are many of the property items that have been accomplished this year.

- Boiler Piping Overhaul. Initial install was done incorrectly and not to manufacture standards
- Routine HVAC maintenance
- Toilets repaired in gym and pre-k wing
- Kitchen sink grease trap cleaned out again! No solids to go down the three compartment sink
- Boiler room drain cleaned out
- Kitchen gas shut off replaced
- Minor concrete repairs to landing in front of school
- Exterior Office door installed
- Stove repaired.
- Concrete slab in front of school to repair
- Fire Suppression installed in kitchen by Jaxxon Fire
- Church front step repair
- Projector Bulb replaced, AV system recalibrated by AVID
- Faucet replaced in sacristy
- HVAC units repaired in school wing
- Roof repairs, and sanctuary painting
- New maintenance contract for all mechanicals in the church (Hoffman)
- Misc. pre-k wing projects including painting, floors, and sidewalk repairs
- Electrical and lighting on parking lot
- Commercial property contracts exceeding expectations now generating an income
- Playground resurfaced
- Many minor repairs throughout the facilities

All of these things, while often going unnoticed could not happen without our volunteers. We thank Tim, Steve, Andrew and Greg for so much that they have done from the physical labor, to the organizing of skilled tradesmen.

If you would be willing and moved to join us in helping to maintain our church property you would be most welcome. Please contact Pastor Dinger.

# PROPERTY

## **Weekday Usage**

Mother's Day Out and Preschool both have their own space, but they do overlap with gym usage, playground and parking lot (drop-off and pick-up). Teachers and MDO staff work out schedules and needs with shared spaces. It is a large spread out building, so security is important to all. We have had some issues with door security in terms of finding doors unlocked. We are improving communication to remind people to lock, and DCE Mark conducts a walk through early each morning to check doors and lights and general site security. Our Ring camera on the gym door provides some extra security and we are considering putting another Ring camera on the preschool entrance. The building is to remain locked during childcare hours, which means logistics need to be worked out during Wednesday morning Bible study, Food Pantry re-supply, and other things that come up from time to time. Good communication and understanding are important to keep our security tight and also use the building the way we need to for all parts of our combined ministries.

## **Sunday morning**

The Sunday School classrooms in the preschool wing have been worked out so teachers can change the room for Sunday, and also return things to a ready status for the week of preschool. The gym is a place for fellowship with coffee and donuts as well as a Sunday School Closing spot. The addition of a sound system some years ago is helpful as a large room is sometimes inhabited by different groups of people communicating at the same time. Children sharing what they learned in Sunday School and song leaders have the opportunity to be heard over the competing sounds, however the distraction factor is an issue as children's attention can be easily swayed. The nursery location continues to be ideal for childcare. Multi-purpose room and lectionary classrooms function well for those attending Bible study, but can be hard to find for guests. The MPR can be daunting for newcomers, particularly if there are not seats available close to the entry door. The Youth Room is ideal for our teens and continues to be a great space for them since the MDO expanded downstairs into their old space. Those MDO Rooms are used for classes and require tables and chairs to be set up and taken down. The Ivanhoe side MDO Room is the regular classroom for Jessica Bordeleau's Bible Study with The Bible Project video requiring a projector set up each Sunday in addition to chairs and tables moved. The Vietnamese chapel group sometimes needs better lighting and table space for language classes or other post-worship events. Their worship space does not always accommodate their needs for all the ministry they are doing.

## **Worship and Greeting Space**

Our worship space continues to be a good size for the numbers we worship, with plenty of seating typically available for guests and visitors. The bathroom issue can be challenging for some who are not used to are building, the need for an usher or staff around to direct them downstairs if upstairs is occupied or out of commission. Following worship the narthex is very hard to hear in order to hold a conversation and connect with people, with the small space and sound amplified by concrete and tile. There continues to be very little space to promote ministry events, recruit volunteers and welcome guests properly. These things are all very crucial to growth and while many long-time members have gotten used to it, we need to be able to understand and consider a newcomer experience and how are building might not be as welcoming and promoting who we are as much as we need or would like to have people find it.

## **Entry points**

While the recent work to our stairs have made our main worship entry safer and more appealing, we still do have challenges with an outdated and steep stair entry point for both sanctuary doors. Better direction help can get people to the gym/elevator entry, but the lot is limited by number of parking spaces and much farther walk for people coming from large lot. As we look to the future and strive to improve all aspects of our ministry, it is important to keep in mind our building and how this impacts our ministry and growth.

# SERVE THE BODY OF CHRIST

We want to thank all of those who do serve throughout the year, and to let you know of opportunities for you to serve the Lord.

FOR JUST AS THE BODY IS ONE AND HAS MANY MEMBERS, AND ALL THE MEMBERS OF THE BODY, THOUGH MANY, ARE ONE BODY, SO IT IS WITH CHRIST. FOR IN ONE SPIRIT WE WERE ALL BAPTIZED INTO ONE BODY—JEWS OR GREEKS, SLAVES OR FREE—AND ALL WERE MADE TO DRINK OF ONE SPIRIT. FOR THE BODY DOES NOT CONSIST OF ONE MEMBER BUT OF MANY. IF THE FOOT SHOULD SAY, “BECAUSE I AM NOT A HAND, I DO NOT BELONG TO THE BODY,” THAT WOULD NOT MAKE IT ANY LESS A PART OF THE BODY. AND IF THE EAR SHOULD SAY, “BECAUSE I AM NOT AN EYE, I DO NOT BELONG TO THE BODY,” THAT WOULD NOT MAKE IT ANY LESS A PART OF THE BODY.

1 CORINTHIANS 12:12-27

## IN WORSHIP

CHOIR  
MUSICIANS  
ORGANISTS  
LIVESTREAM TEAM  
POWERPOINT OPERATORS  
ACOLYTES  
USHERS  
ELDERS  
GUEST PREACHERS  
FIELDWORKERS  
HANDBELL CHOIR  
PRAISE TEAM  
CHILDREN'S CHOIR

## IN LEADERSHIP

PROPERTY TEAM  
COUNCIL MEMBERS  
ELDERS  
FINANCE TEAM  
SUNDAY SCHOOL  
YOUTH GROUPS

## IN SERVICE

FOOD PANTRY  
EASTER EGG HUNT  
VBS  
STEPHEN MINISTRY  
PRAYER TEAM  
SCRAP METAL DRIVE  
PAPER SHREDDING DAY  
SATURDAY SERVANTS  
CFNA  
PANERA BREAD PICKUP

AND HE GAVE THE APOSTLES, THE PROPHETS, THE EVANGELISTS, THE SHEPHERDS AND TEACHERS, TO EQUIP THE SAINTS FOR THE WORK OF MINISTRY, FOR BUILDING UP THE BODY OF CHRIST, UNTIL WE ALL ATTAIN TO THE UNITY OF THE FAITH AND OF THE KNOWLEDGE OF THE SON OF GOD, TO MATURITY, TO THE MEASURE OF THE STATURE OF THE FULLNESS OF CHRIST.

EPHESIANS 4:11-13

# VISION & MISSION

It is easy in any organization to have “mission drift.” Too often, as we experience growth, in size, complexity, or ministries, the Gospel often becomes cursory, expendable, or even forgotten. Again and again, leaders have watched their ministries expand, and lose sight of their original goals.

Even churches can stray from their calling. While competing forces entice toward subtle changes, foundational principles must be safeguarded so that we remain laser-focused on core values, from the board level to daily organizational culture to individual ministries.

To that end we have attempted to focus our attention in two overarching themes - Neighborhood and Nations. This focus is broad enough to allow for innovation and ability to respond to new situations, but also is narrow enough to keep us focused and not readily experience mission drift. If it keeps us neighborhood focused we will do it. If it keeps us connecting with the Nations, we will do it. If it takes us away from either, we will say, good idea, but no.

## **In Our Neighborhood**

We are committed to serving our neighbors and being a positive influence in our immediate context. We do this in many of the following ways:

- Word of Life Lutheran School, the last Lutheran school in South City
- Mother's Day Out
- Lindenwood Area Senior Ministry
- Lindenwood Park Association
- Christmas Market
- Contextual Worship Life
- Faith Formation
- Food Pantry
- Scrap Metal Drive

## To the Nations

- Word of Life Lutheran School is one of the more cultural diverse Lutheran schools in the country with students from over 13 different countries
- Partnership with Christian Friends of New Americans giving us many chances to volunteer and connect with our new neighbors from the many nations.
- Support of Concordia Children's Orphanage in the Philippines.
- Long term support of Pastor and MaryAnne Rall's mission work in Papua New Guinea. We pray that they will soon be able to return to continue this special ministry.
- Pastor Vo serves the Vietnamese population of St. Louis, the only Lutheran ministry in the area to the Vietnamese diaspora.
- Pastor Lewi Jerimaya has been ordained into the pastoral ministry. Pastor Jerimaya is the first LCMS Kunama speaking pastor. He has gathered a group of over 40 Ethiopian and Eritreans who gather for worship every Sunday at the Peace Center. He also is connecting with a wide range of immigrants from all of the world. He has been called to serve through St. Trinity.
- The embrace of diversity of our congregation, with current members that are from Sierra Leone, Côte d'Ivoire, Nigeria, Ghana, Ethiopia, Eritrea, Togo, Guatemala, Vietnam, Gambia, Morocco, Congo, Japan, Iran, Germany, Philippines, and Korea. We have had missionaries to places from India, to Taiwan, Papua New Guinea to Kyrgyzstan, and many others with short-term missions throughout Europe. We display this diversity with the various national flags that are hanging in our sanctuary. Flags have meaning, every time that we hang a flag we are trying to communicate something important. Timothy has a long history of sending and receiving missionaries to other countries, and we have members of the congregation from all across the world. The flags that hang in the sanctuary represent those nations. When we look around and see those flags, we see the Gospel having gone out to those nations and coming from those nations to us. The church is global even in its local manifestation. In a world in which we are constantly being told to identify ourselves with one nation more than with Christians of other nations, this helps us see that we are united across national boundaries and that our greater unity is in our common faith in Jesus than in a common language, culture or citizenship. In a world that is so strongly divided, when we come to Timothy in our common faith and united worship, seeing the flags helps us see that people of every nation has a special place in God's heart. We are also committing to finding a director of music who can help us bring a vibrancy and diversity in our worship that celebrates this national and cultural diversity.

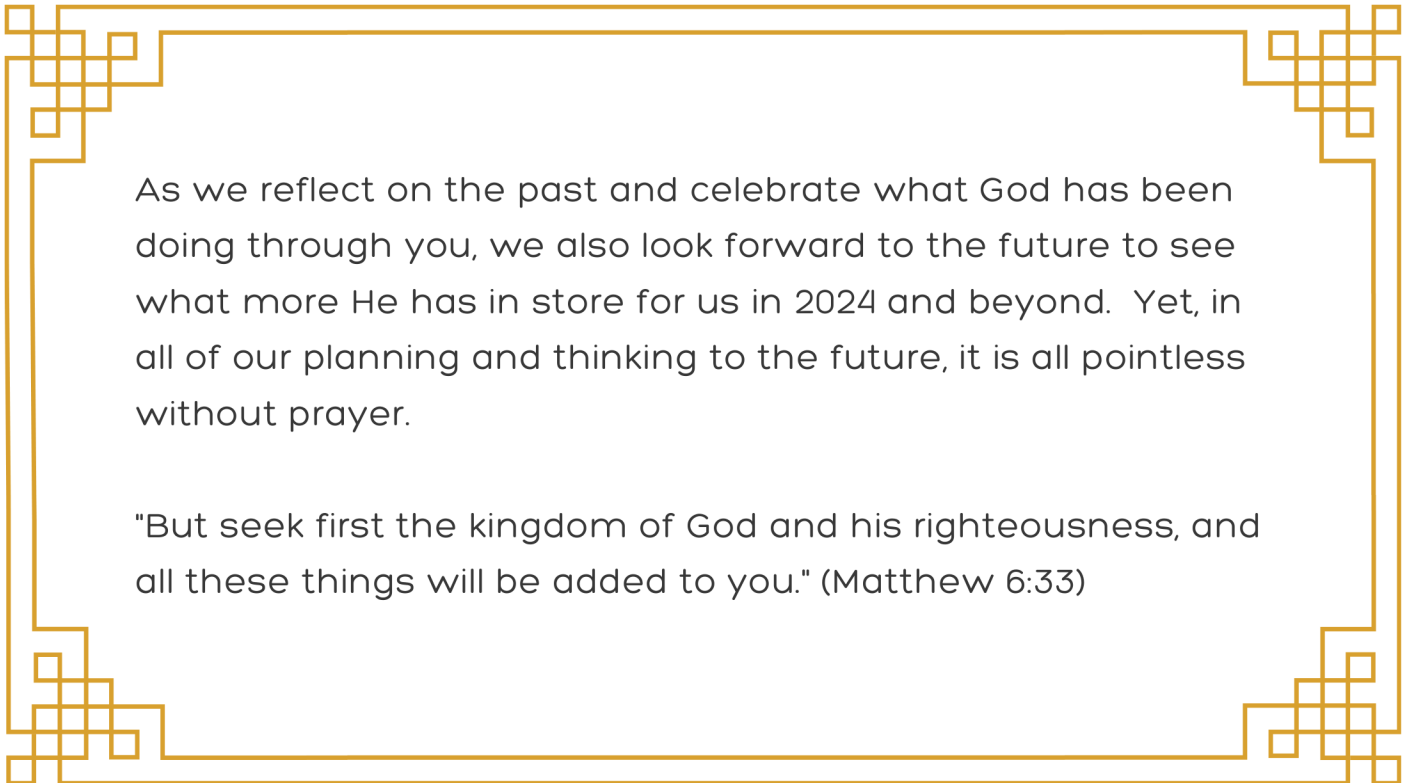


# CONTINUING IN MINISTRY

## GOALS FOR 2024

For it is by grace you have been saved, through faith—and this is not from yourselves, it is the gift of God—not by works, so that no one can boast. For we are God’s handiwork, created in Christ Jesus to do good works, which God prepared in advance for us to do.

### EPHESIANS 2:8-10



As we reflect on the past and celebrate what God has been doing through you, we also look forward to the future to see what more He has in store for us in 2024 and beyond. Yet, in all of our planning and thinking to the future, it is all pointless without prayer.

"But seek first the kingdom of God and his righteousness, and all these things will be added to you." (Matthew 6:33)



# 1. Vision of Ministry Focus

AND HE SAID TO ALL, "IF ANYONE WOULD COME AFTER ME, LET HIM DENY HIMSELF AND TAKE UP HIS CROSS DAILY AND FOLLOW ME. FOR WHOEVER WOULD SAVE HIS LIFE WILL LOSE IT, BUT WHOEVER LOSES HIS LIFE FOR MY SAKE WILL SAVE IT.

LUKE 9:23-24

Timothy has gone through some drastic changes in the last few years, with two pastors retiring, the hiring of a full time music director, and changes in long time office and support staff. On top of that there was COVID. This has led to a decline in worship attendance and other families to find new church homes.

We also have a wide variety of ministries that people are involved in.

This has led us to realize that we need to have a clear vision of ministry focus. We will be discussing this more fully at the Voter's Meeting.

The council has met with representatives from the St. Louis Lutheran Foundation and then interviewed a potential person who could help us in this area. Dale Kreinenkamp is a transition consultant for nonprofits, especially for churches. His process would involve in depth meetings with leaders of the church and then four focus group meetings with members of the congregation and of the community.

We would ask that you would be involved in these groups and so give voice to the direction we will seek in the next several years.

## 2. Early Childhood Ministry

WITH UPRIGHT HEART HE SHEPHERDED THEM AND GUIDED THEM WITH HIS SKILLFUL HAND.

PSALM 78:72

We see how God is bringing young children to our ministry and the over whelming need for a safe and caring environment for their children.

We are looking forward to putting more focus on early childhood ministry through our MDO program and WOL preschool. This is a pivotal time for many parents to make a change in faith issues and church attendance.

Since the children are here for 2-3 years or so, it can be hard to make deep connections with church staff. Therefore, we are looking at other ways we can increase the connections we are making in this age group.

### 3. WORSHIP AS OUTREACH & INTEGRATION

---

GIVE PRAISE TO THE LORD, PROCLAIM HIS NAME; MAKE KNOWN AMONG THE NATIONS WHAT HE HAS DONE.

PSALM 105:1

Every worshipper connect with God during worship and using the creative arts.

Develop a long-range plan to ensure that worship supports the overall mission of the church and enhances planned Biblical teaching.

Utilize musical talents of the current music team and incorporate diverse musical talents of those within and outside the congregation

Recruit a team of talented musicians who represent the musical styles, ethnicity, gender, and age of our congregation which will lead to unified worship and faith formative experience.

Provide ongoing training for musical volunteers and leaders.

Build contacts and relationships with local musicians, studios, etc. for evangelism and incorporation of outside musicians into our worship life.

Grow Children's Choir as form of outreach into our community.

## 4. Home Centered Ministry

---

FOR THE MINISTRY OF THIS SERVICE IS NOT ONLY FULLY SUPPLYING THE NEEDS OF THE SAINTS, BUT IS ALSO OVERFLOWING THROUGH MANY THANKSGIVINGS TO GOD.

"2 CORINTHIANS 9:12



TELL THE NEXT  
**GENERATION**  
PSALM 78:6-7

We continue to work with the Missouri District in developing a home centered, church-supported ministry. The faith formation of our people does not happen solely, or even primarily at the church property, but in the every day lives of the people.

We have been working on making ministry connect more to our home life and not that all would happen here at this location.

We look forward in next year to find more ways to support every home in your faith development.

# BY THE NUMBERS

323

TOTAL  
BAPTIZED  
MEMBERS

233

TOTAL  
CONFIRMED  
MEMBERS

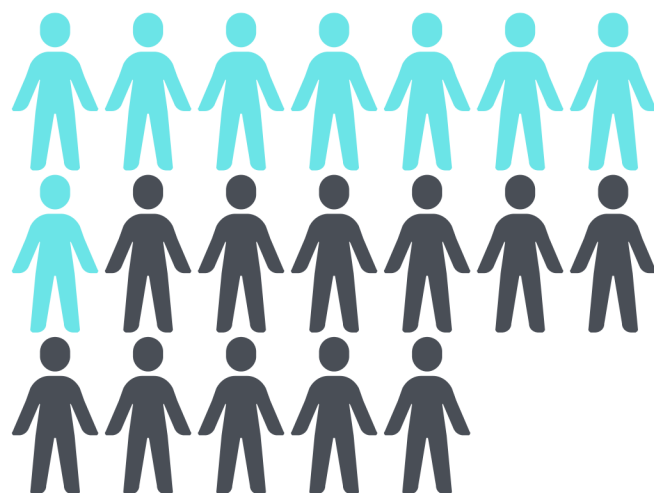
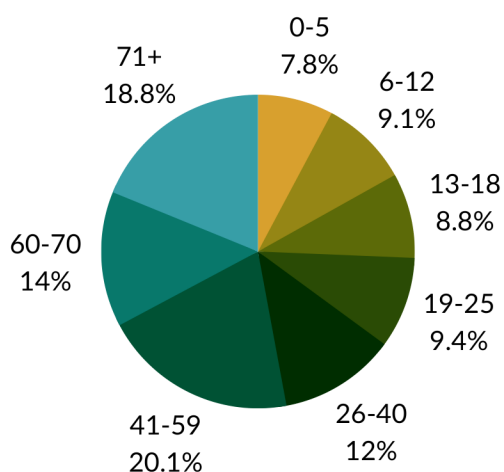


BAPTISMS  
3 CHILDREN

148

TOTAL  
HOUSEHOLDS

## MEMBERSHIP BY AGE GROUP



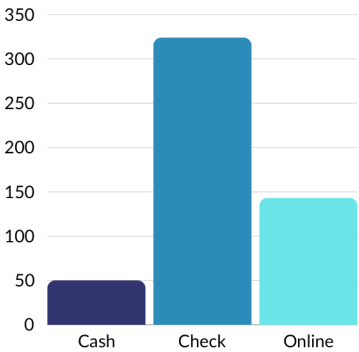
NEW MEMBERS  
8 YOUTH & 11  
ADULT

EACH OF YOU SHOULD USE WHATEVER GIFT YOU HAVE RECEIVED  
TO SERVE OTHERS, AS FAITHFUL STEWARDS OF GOD'S GRACE IN ITS  
VARIOUS FORMS. 1 PETER 4:10

Giving Insights in 2023

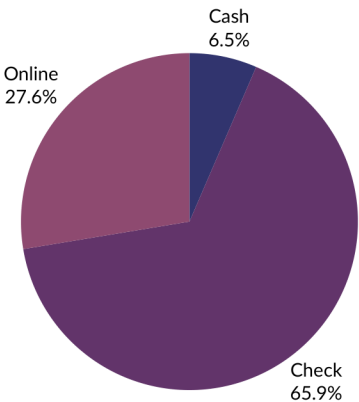
Giving Units 248  
First Time Givers 59  
Second Time 27  
Third Time 16  
Fourth Time 6  
More than 5 Gifts 139

Average Cash Gift \$50  
Average Check Gift \$324  
Average Online Gift \$143



Average Amount by Giving Type

Total Given to all Funds in 2023  
\$522,763

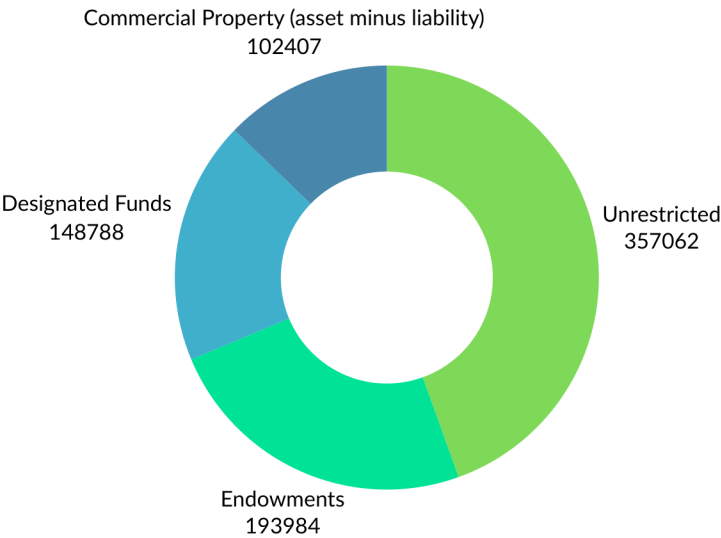


Gifts by Amount Given

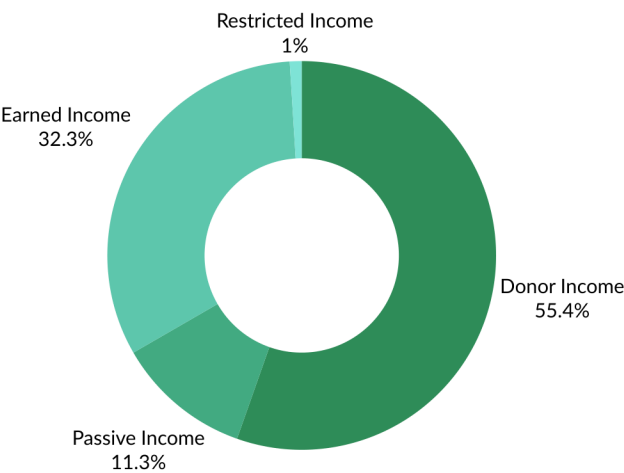


# Financial Summary

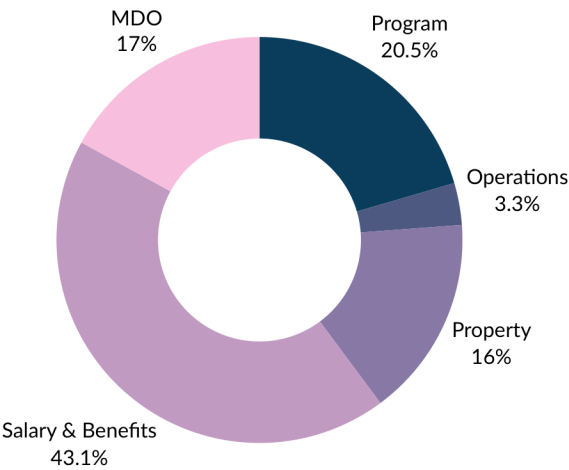
## Assets



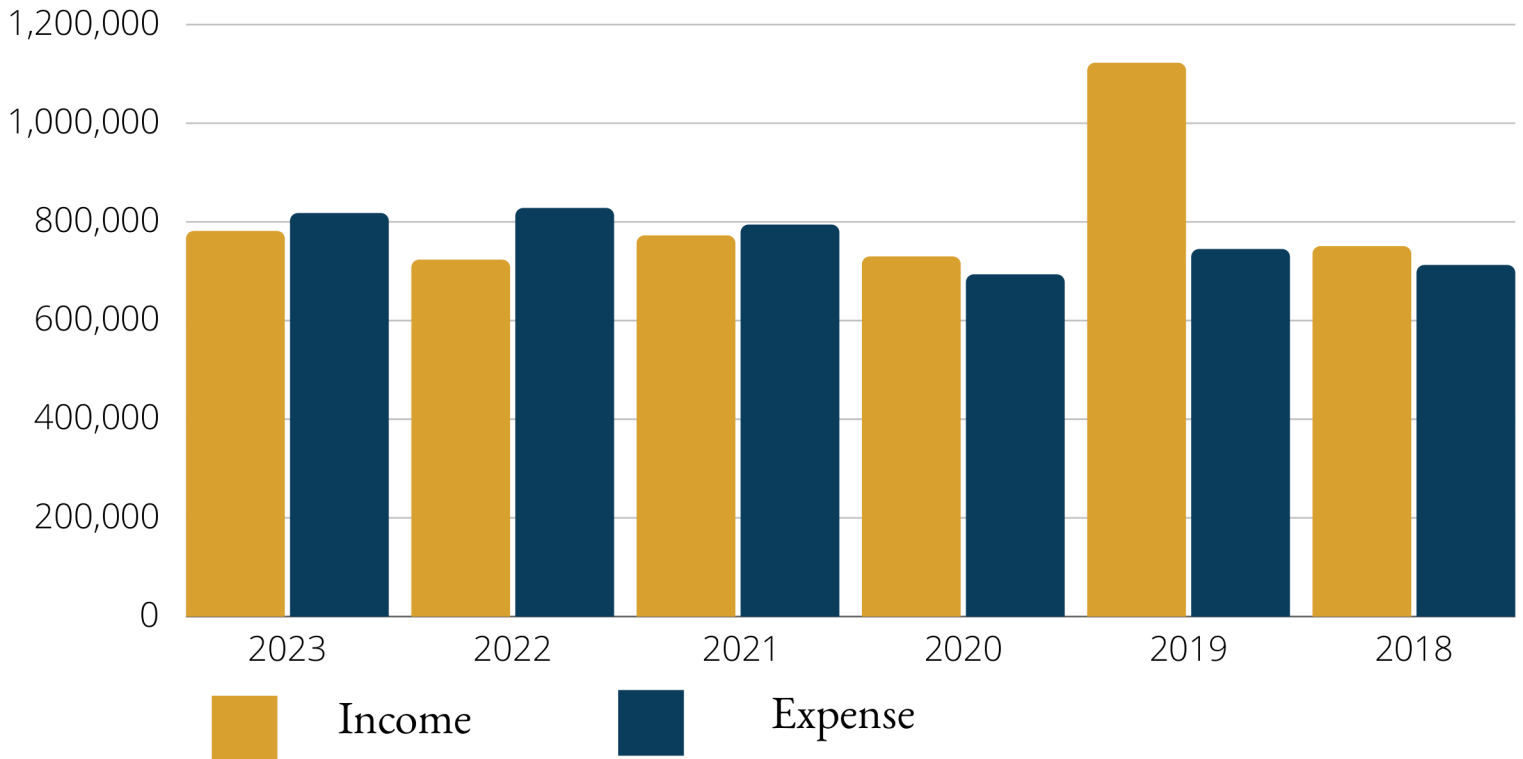
## Income



## Expenses



## Income vs. Expense

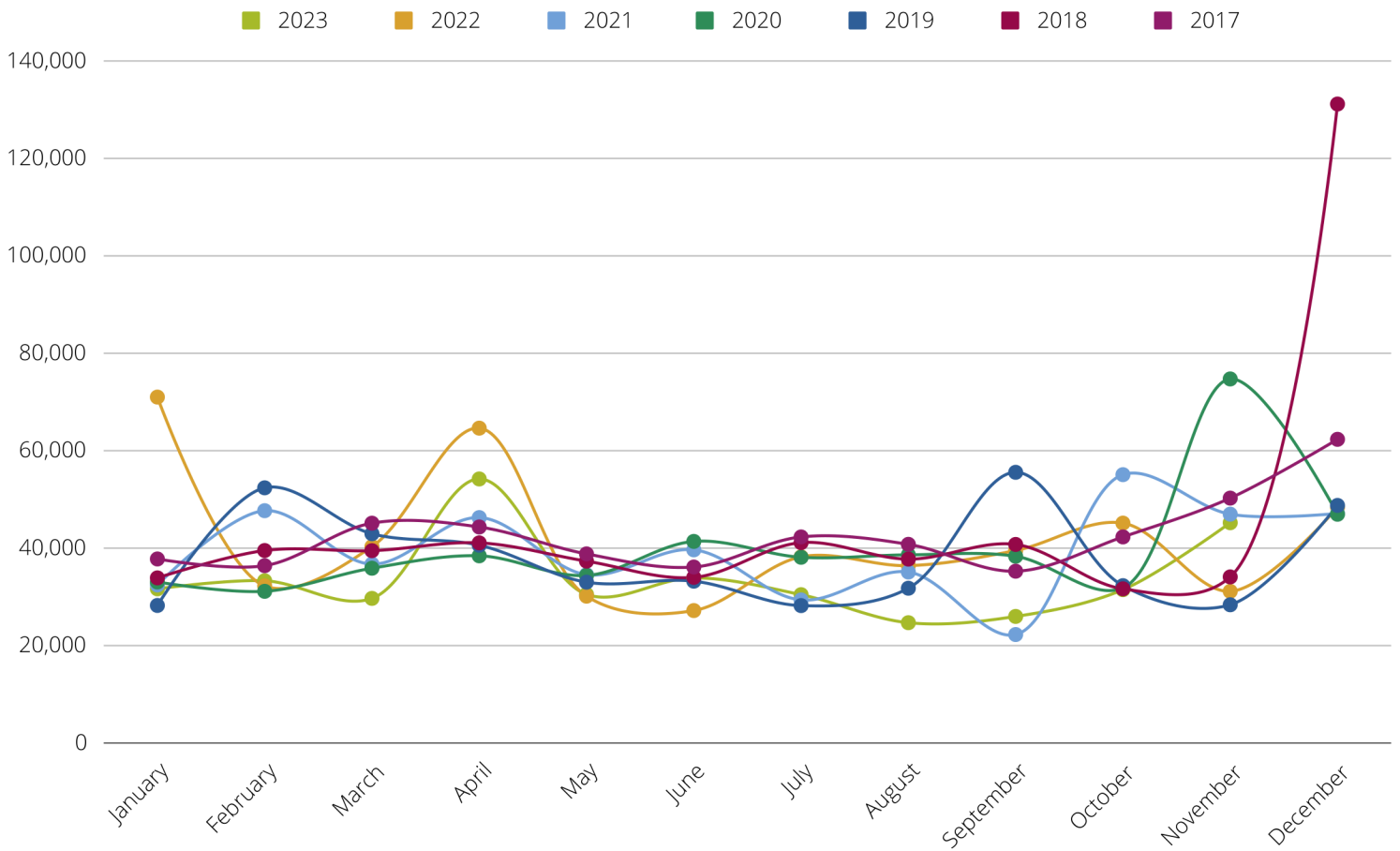


This year our giving received was considerably lower than what we had anticipated. We are thankful that we have a considerable amount in cash reserves. However, we can not continue for long doing that every year.

We have made some significant reductions in areas of spending for next year's proposed budget. We are blessed that about 40% of our income to the church is through sources other than donors

We are thankful for your support of the everyday ministry at Timothy which enables us to serve you, our neighborhood and the nations in the name of Jesus. We are only able to be successful in meeting the challenges of 2024, and accomplishing the ministry that God has given to us because of your generosity. You have made a very real impact through Timothy as you are growing as a disciple of Jesus.

## Donor Income Comparison



## Attendance Comparison

