



Evangelical
Lutheran Church
in America

St. Mary's Lutheran Church
2001 80th Street ~ Kenosha, Wisconsin 53143

Founded 1874 ~ Current Location 1961

What's Inside

- Health NewsPages 4 & 5
- Pastor Debbie Hartfield's Ordination Photos.....Pages 8 & 9
- Key Contacts & Ways to Reach OutPage 15

Church in Society presents...

CHRISTMAS IN JULY

“OPEN YOUR DOOR TO HELP OTHERS”
July 1—31

CHRISTMAS IN JULY

It's July, so it is also time for Christmas in July. As in years past, we will be collecting any and all personal care items for **the ELCA Outreach Center**. This year, besides collecting items, members may also make monetary donations in the form of cash or check. Checks should be made out to **St. Mary's Lutheran** with a memo **“Christmas in July”**. A table will be set up in the Fellowship Hall with a container for cash. Any donations can be dropped off there during Office Hours. Beth is at church Mondays, Tuesdays and Thursdays from 9am—3pm, along with Wednesday afternoons from Noon-6pm and Friday mornings 9am—Noon. **Just ring the doorbell to gain entrance.** Items may also be dropped off at the time of church services on Sunday mornings and Monday evenings.

There are still people who are homeless, hungry and lack some of the basics we all take for granted. Our community is fortunate that we have service organizations such as **the ELCA Outreach Center** to help people

in need. However, those service organizations need our help as well. The needs of that organization are especially great this year with people who have lost jobs or cannot provide for themselves for a variety of reasons.

Any and all types of personal care items are needed at this time.

With the great needs of the community, we hope anyone who can contribute, will.

RESPECTFULLY
SUBMITTED
KATHY NEURURER
CHURCH IN SOCIETY
COMMITTEE

CIJ 2022's Collection in Fellowship Hall



The mission of St. Mary's Lutheran Church is to be a fellowship of believers, called by God and empowered by the Holy Spirit, to bear witness to Jesus Christ in the community and in the world. We equip ourselves for our mission by: Prayer, Worship, Education. Enabling us to witness through: Evangelism, Service, Stewardship.

WE ARE
GOD'S PEOPLE
FOLLOWERS OF JESUS CHRIST
GIFTED BY THE SPIRIT
GO PRAY
GO LOVE
GO SERVE
THANKS BE TO GOD!



We are a
RECONCILING in CHRIST
Congregation



SUNDAY, JULY 16 ~ 10:00AM
ST. MARY'S LUTHERAN CHURCH
ANNUAL MEETING OF THE
CONGREGATION
AND
ANNUAL MEETING OF ST.
MARY'S LUTHERAN CHURCH
ENDOWMENT FOUNDATION

A quorum of *voting members is needed. Please prayerfully plan to attend. (*Must have communed and made a contribution at least once since last meeting).

THIS IS AN IMPORTANT MEETING.

Interim Pastor, Pastor Kathy Brown

Peace in the name of Jesus Christ!

When I think about the month of July, I think of family get-togethers, picnics, trips up north to sit on a beach, going fishing and sitting around campfires. One can imagine the smells of hot dogs and burgers on the grill and tables graced with bowls of homemade potato salad, trays of cookies, brownies, and other desserts. Special detours are taken to the favorite ice cream stand that's only open in summer to get frosty treats. Sitting around a campfire, the air is filled with wafts of wood burning, marshmallows toasting, and mosquito repellent.

Of course, one of the major celebrations is the Fourth of July, Independence Day, with pretty much all of the aforementioned activities, often with the additions of a parade with flag wavers decked out in red, white and blue, and the seemingly obligatory display of fireworks. (My dog never liked that last part because of the noise, and neither did I when I was a kid for the same reason.) It's a celebration to commemorate the signing of the declaration of Independence on July 4, 1776.

"We hold these truths to be self-evident, that all men are created equal, that they are endowed by their Creator with certain unalienable Rights, that among these are Life, Liberty and the pursuit of Happiness." THOS. JEFFERSON

Though he was off by two days, John Adams wrote in a letter to his wife Abigail:

The second day of July 1776, will be the most memorable epoch in the history of America. I am apt to believe that it will be celebrated by succeeding generations as the great anniversary festival. It ought to be commemorated as the day of deliverance, by solemn acts of devotion to God Almighty. It ought to be solemnized with pomp and parade, with shows, games, sports, guns, bells, bonfires, and illuminations, from one end of this continent to the other, from this time forward forever more.

It's curious that going to church on the 4th of July isn't done to satisfy the "by solemn acts of devotion to God Almighty" piece of commemorating "the day of deliverance." The Declaration of Independence explains to the world why the thirteen original colonies regarded themselves as independent sovereign states and were no longer subject to British colonial rule. It was a day set aside to celebrate freedom for all those who call this land, now the United States, home.

And while, it was a tremendous undertaking, one worth celebrating, there is still much work to be done. The Declaration states: *"We hold these truths to be self-evident, that all men are created equal, that they are endowed by their Creator with certain unalienable Rights, that*

among these are Life, Liberty and the pursuit of Happiness. Even in its day, "all men" did not include people who were enslaved, people of color. Women were not considered equal. LGBTQ individuals weren't even considered.

While we think that we have made great progress in the areas of civil rights, white supremacy, the same supremacy held by that group of white men who put pen to paper in Independence Hall, continues to hold our siblings of color in bondage. Not all people are considered to be equal as God created us. Think about it. If we believe that we are created in God's image, we need to understand that *all* others are created in God's image. If we continue to engage in the ideologies, systems, and institutions of white supremacy, where does that put us in relationship to God. Who is supreme? God or we who see certain other groups of our population as inferior?

As we go about our celebrations, particularly 4th of July, let us enjoy the freedoms we have, for many have labored to bring them about and to preserve them, but let us also ardently work to bring change so that *all* our siblings might share in those freedoms to their fullest.

May God bless you all with happiness, health and safety as you continue your summer activities.

*Peace,
Pastor Kathy*

Dear Friends in Christ,

SURELY THE PRESENCE OF THE LORD IS IN THIS PLACE!

We hope you have felt Christ in and around you this last month with the Affirmation of Baptism for our confirmands and the rite of Ordination and the installation of Pastor Debbie Hartfield. We are truly blessed and for much we are thankful. We are thankful for you and the many ways you bring life to this church.

In Pastor Kathy's sermon on the mission of Jesus's followers, we heard that "the harvest is plenty, but the laborers are few." This is true with the work of our church. "We are called to be disciples and be the church and to serve others. We can do this as we have been given the Holy Spirit to guide, empower and strengthen us with all we will need." This is so reassuring and reminds us of a favorite bible verse, **"I can do all things through Christ who strengthens me" (Philippians 4:13)** We are in a time of transition in our church, looking for members to serve on a Call Committee for a full-time pastor. We are also close to electing new council members at our Annual Meeting in three weeks. If you have ever given a thought to serving in one of these ways, we can help you understand the "why" and guide you on the "how". Please call one of us and we would be happy to speak openly with you.

We had our **Summer Stewardship Retreat** this past Saturday and it was important to share what our committees are doing and how we can move forward being stewards of God's love together. Many of our ministries are being represented each month by giving a short Temple Talk before the service begins. Listen for ways in which you can participate, pray, and provide for St. Mary's and the community.

Lastly, Chris and I feel very fortunate to have had the opportunity to work together. We are encouraged by the volunteers who have given of their time and talents. Our co-leadership position has allowed for better communication and collaboration, and we suggest it as a model for committee leaders moving forward. We look forward to your participation at the **Annual Meeting on July 16, 2023 at 10:00am.**



*Let your light shine,
Julie Schmit, 262-818-1571
and Christine Johnson, 262-818-8879
Co-President's Congregation Council*

C10.04. Sixty (60) voting members shall constitute a quorum.

C10.05. Voting by proxy or by absentee ballot shall not be permitted.

C10.06. All actions approved by the congregation shall be by majority vote of those voting members present and voting, except as otherwise provided in this constitution, bylaws, or by state law.

Page 14, SMLC Constitution

NURSE SUE—ADVOCATE FAITH & HEALTH

Dear Friends,

July has arrived and so have the hazy days of summer. Wildfire smoke continues to loom in the atmosphere and our area has had its share of poor air quality. Particle pollution, also known as particulate matter or PM, is the main component of haze, smoke, and dust. PM comes in many sizes and is a mixture of solid and liquid droplets that are suspended in the air.

Particulate matter can occur year-round. The air we breathe indoors and outdoors always contains particle pollution. Pollution comes from a wide range of sources, including power plants, cars and trucks, wood stoves and forest fires. Some particles, such as dust, dirt, soot, or smoke, are large enough to be seen with the naked eye. Others are so small they can only be detected using an electron microscope.

Picture a human hair at 50-70 microns in diameter compared to the particulate matter that can be at 10 microns or less in diameter. Airborne microscopic particles can pass through the nose and throat and enter the lungs. Once inhaled, these particles can collect in the heart and lungs and cause serious health effects for people with heart and lung disease, diabetes, elderly and children. Symptoms can

include coughing, wheezing, shortness of breath, and unusual fatigue. In people with heart disease, particle pollution has been linked to heart attacks and arrhythmias.

The Air Quality Index (AQI) is a nationally uniform color-coded index for reporting and forecasting daily air quality. It is used to report on the most common air pollutants that are regulated under the Clean Air Act. The AQI tells the public how clean or polluted the air is and how to avoid health effects associated with poor air quality. Checking the AQI each day will help people notice at which levels they will experience effects. The higher the AQI value for a pollutant, the greater the danger. While healthy children don't usually experience serious health effects from short term exposures to particle pollution, evidence indicates that long-term exposures can affect lung function growth. Children are more likely to be exposed than adults because they are more active outdoors.

A person can become more aware of daily air quality by listening to your local weather broadcasts, newspapers, or download www.epa.gov/airnow or phone apps such as Air Quality & Pollen -Air Care or IQAir or EPA AIR Now. The apps have forecasts and will provide recommendations for reducing exposure by basing activities on the air quality. Levels less than 50 are considered healthy, and levels higher than 150 can lead to respiratory symptoms among the general population. People with lung disease should avoid being outside when the air quality index is between 100-150. Though the AQI scale extends to 500, levels above 300 rarely occur in the United States.

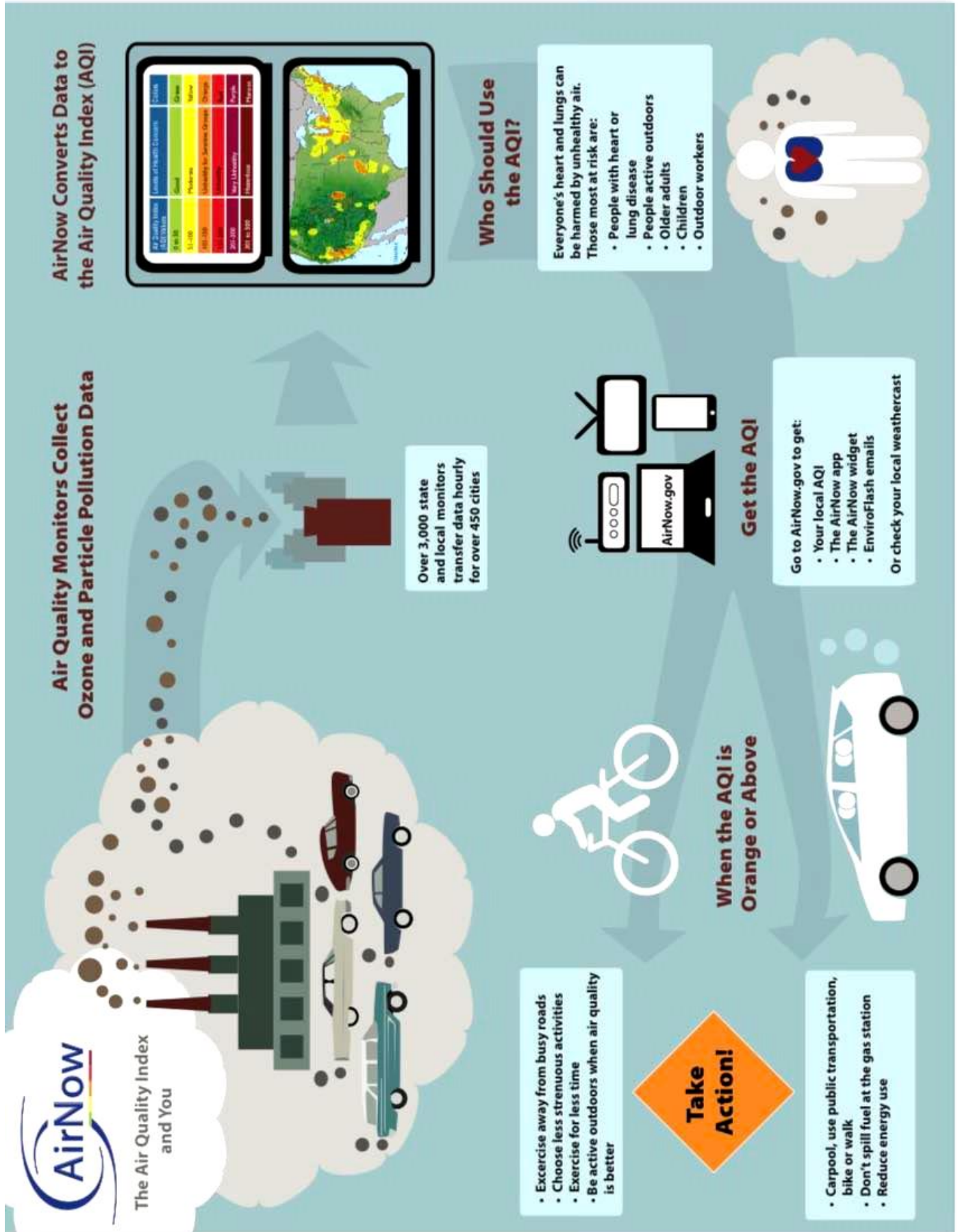
If our area has poor air quality keep windows and doors shut, and use air purifiers with fresh filters and air conditioning with clean filters. If you do not have air conditioning, consider shelters, air-conditioned stores and malls. If you need to go outside when the air quality index is high, you can wear a fitted N-95 mask. Stay safe and enjoy the summer!

*Shalom,
Sue Quever R.N., F.C.N.
Advocate Health Faith and
Health Team*

*Nurse Sue's in the Office on
Tuesdays Only. Call 658-3555 for
Appointments.*



*download
www.epa.gov/airnow
or phone apps such as
Air Quality & Pollen
-Air Care or IQAir or
EPA AIR Now*



SMLC YOUTH

MINISTRY NEWS



Vacation Bible School!

Sunday July 30 -
Wednesday August 2nd
9AM-12PM

Use this [link](#) or QR code to register your child. Please complete one registration per child.



Congratulations to our
Seniors
Lucas Eltoft, Henry
Pratt and Emily
VanLaningham!!



We had a great end of the year
bowling celebration!! Thank
you to everyone who helped
make it a great year!

It's not too late to sign
up for the Youth
Mission Trip to
Minneapolis and St.
Paul, Minnesota
July 22-26!!



Michelle Fonk - Children & Youth Education Coordinator 262-770-0523
Kendra Richter - Middle & High School Youth Lead (FISH & Fusion) 262-287-2463
Stephanie Raszkievicz - Children's Ministry Lead (Sunday School) 262-945-7519

smlcyouthed@gmail.com

Surely the presence of the Lord is in this place ...the name of the opening anthem for my worship and ordination service, and so much more! God, in Christ Jesus is present in all of creation and certainly God, manifested in Jesus, through the Holy Spirit, was present, palpable, and fully alive as we came together at St. Mary's Lutheran, to worship and take part in my ordination! This day brought together a lifetime of people that have shaped and informed me and my ministry, from those who have known and loved me since I was a child here at St. Mary's, to college friends, colleagues from Abbott, those who journeyed alongside me through seminary, congregation members from my contextual education and internship sites, rostered leaders from across the synod, my family and God's beloved community of St. Mary's!

There was much work, communication, and collaboration across our entire church family to make my day of ordination so very special and for that, I am deeply grateful! My heart is still full as I look through the many pictures and see the love of Jesus reflected in them! I am blessed to walk this journey with you, together in mission, as your pastor! We are God's people! Followers of Jesus Christ! Gifted by the Spirit! Go pray! Go Love! Go Serve! Thanks be to God!

In Christ, Pastor Debbie

I thank my God every time I remember you, constantly praying with joy in every one of my prayers for all of you, because of your sharing in the gospel from the first day until now.
Philippians 1:3-5



The St. Mary's Lutheran Endowment Foundation is proud to announce the following students as recipients of endowed scholarships for the 2023-24 school year.

Best wishes to all our college bound students.

Brogan Bear	UW Eau Claire
Andrea Palmen	Macalester College
Jaclyn Palmen	Sarah Lawrence College
Emily Van Laningham	Carthage College
Nicholas Van Laningham	Wartburg College

All of these scholarships were made possible by the generous donations from:

Agnes Petersen	Dagmar Mead
Lydia Ostergaard	Rev. Siersbeck
Col. Fonk	Bertha Fonk
Betty Kuessow	Dolores Akin
Wayne & Patricia Koessl	



A unique feature of Our Harmony Club Inc. is that it is volunteer based. There are many ways that volunteers contribute to the overall success of Our Harmony Club Inc. including being paired with a guest and assisting them throughout the day. If you would like to volunteer, let us know! Volunteers are **NOT expected** to provide personal care.

Volunteer opportunities can be:

- Cook lunch.
- Provide entertainment.
- Leading light exercises, games, or crafts.
- Donate goods and services.

Our volunteers provide our guests with an environment where both guests and volunteers feel a sense of purpose and pride while attending the club.

Contact Us!

Dawn Vlach

262-880-5301

dawnvlach@ourharmonyclub.org

www.ourharmonyclub.org





Rostered Leaders
ready to process.
Prs. Lund, Rawn,
Quever & Raben



Pr. Kathy Boadwine reads the Gospel &
shares a message



Pastors surround Debbie with laying of hands in support &
prayer; Dana Larsen was the Assisting Minister; Pastor Kathy
Brown presided over Holy Communion.



**Congratulations
on your
Ordination &
Installation**
*PASTOR DEBBIE
HARTFIELD*
June 17, 2023



Bishop Paul Erickson, of the Greater
Milwaukee Synod, ordains & installs
Pastor Debbie Hartfield





The Hartfield family
worshipping together—
Celine, 7 mos.
(and Pr. Kevin Beebe)



Arrangements made by Jan &
Brad Weinstock



St. Mary's Adult &
Jubilate! Handbell
Choirs offered
Music

Rev. Debbie & Rev.
John serving
communion



St. Mary's Pastors—Past and Present:

Back Row: Pr. Sheila Rawn, Pr. David Raben,
Pr. John Anderson, Pr. John Holm, Pr. Carl Lund



Front row: Pr. Cindy Aasen, Pr. Debbie Hartfield,
Pr. Kathy Brown, Pr. Kathy Boadwine



Rev. David Rebey, Steve,
Rev. Kathy Boadwine



Kris Twadell, S/V Tech



Dr. Brian
Schdettler

So many faithful
volunteers &
Superfans

Photo Credit: Rev.
Chris Manke /
Patti Mason



NEWS YOU CAN USE!

FLOCKING IS ROCKING!

To buy a Flocking—\$20
Flocking Insurance—\$25 all
season
or \$15 one time insurance
against flocking!

*The St. Mary's Youth are
raising money for the Youth
Mission Trip to Minnesota
this Summer!*



**ST. MARY'S NIGHT AT
KENOSHA KINGFISH
JULY 9TH
vs. The Kalamazoo
Growlers
1:35pm**

TICKETS STILL AVAILABLE AS OF 6/30

“What does this picture
represent? Stay tuned
for more information in
the coming weeks about
this new and exciting
WELCA Lydia project that
was sponsored entirely
by the St. Mary's
Lutheran Endowment
Foundation.”



Next Contemporary Services are Sundays at 9:00am:

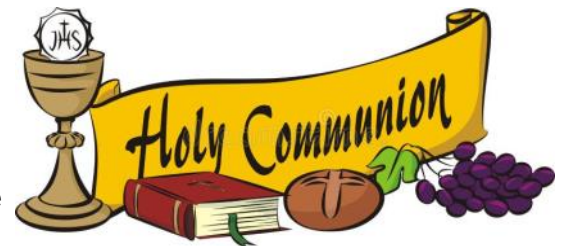
July 9th & August 13th

Please join the worship team as we gather to embrace God's love for us and our love for one another. Middle and High School youth are encouraged to help lead.

I first want to say thank you for your assistance in Holy Communion these last 6 months.

We are now up to the month of July and we need your help, especially 7/9, 7/16, and 7/23. If you can help with any of those days, we appreciate that and appreciate you. I also put in the months of Aug, Sept, and Oct. “Oh yeah” IF YOU KNOW OF ANYBODY that may be interested in serving in the opportunity please encourage them or let me know and I can try to talk with them.

https://docs.google.com/spreadsheets/d/15xI3Tnjq-9qmxBd4gbS5RdZDJK0KjHcr2z9R_tkDxfQ/edit



*Sincerely,
Andy Schroeder
Sunday Communion Scheduler*

Mission Exploration Team Report (MET)

The Mission Exploration Team (MET) was commissioned by the Church Council in January, 2023. Required by the Synod, the eight member MET was tasked with completing the Ministry Site Profile (MSP) for St. Mary's Lutheran Church. The most recent Visioning and Strategic Plan was an important resource. Congregational input was sought through a series of survey questions during March. The required demographic information was gleaned from a variety of sources. The MET completed the sections of the MSP they were responsible for in early June. Certain sections of the report require Church Council action.

These include:

- the type of call
 - minimum credentials
 - compensation package
 - references
 - and establishing a Call Committee.
- When completed, the Synod will present the MSP at a church town hall meeting on August 13 after the 9:00am worship service. Prior to this meeting, a draft of the MSP will be available for review by the people of St. Mary's. Submission to the Greater Milwaukee Synod follows the approval of the MSP by St. Mary's congregation.

**Respectfully submitted by,
The Mission Exploration Team**



LUTHERAN WORLD RELIEF

Lutheran World Relief Personal Care Kits

To be collected until fall when they can be sent to LWR.

A great need for these for the Ukrainian Refugees and people effected by the climate crisis.

Personal Care Kit Items

New items only.

Please do not enclose in plastic bags.

- One 52" x 27" (approx.) dark towel (watch for sales)
 - 2—bath-size bars of soap in original wrapping
 - 1—toothbrush in original wrapping: adult size
 - 1—sturdy comb
 - 1—metal nail clipper with optional file attached
- **Please do not donate items with any religious symbols or messages or decorated with a U.S. flag, or other patriotic symbols.*

How to Pack Your Personal Care Kit:

1. Fold the towel in half.
 2. Place the rest of the items in the towel.
 3. Fold and roll so nothing falls out.
 4. Secure with yarn, ribbon, or string (use 2 yds. /72 in.)
- Please keep this list for future reference.

Thank you for supporting LWR.

**Anne Winkle, WELCA President
Committee Chairperson, 2022-23**

When You Are Sick in Mind, Body, Spirit:

- ◇ St. Mary's is one of the only church congregations that employs a Parish Nurse/Faith Community Nurse. She has amazing resources, both as a Registered Nurse, and as a Christ-Centered servant.
- ◇ Please call the office and leave a message with how we can call you back. **Do not give any personal, private or symptomatic information to the office.**

When You Are Hospitalized:

- ◇ Please call the church to notify the staff of your admission.
- ◇ Don't assume the hospital will notify the church, even if you have asked them to. Hospitals are very busy places, and some tasks are put off for more urgent needs.
- ◇ Please notify the church office when you are scheduled for surgery (in or outpatient).
- ◇ If you wish to be included in the Prayers of the People, please contact us.
- ◇ We don't mind getting more than one phone call about a parishioner who is hospitalized. Please don't assume that someone else will be notifying us.

Prayer Requests If you have a prayer request that you would like to have placed on St. Mary's Prayer Chain, please contact:

Sue VanBendegom652-1770
Faith/Health Community Nurse Sue....658-3555

**Council Connection for July is Lisa Zanin.
262-909-1181 or lzanin1953@gmail.com**

Our Core Practices



BECOMING INCLUSIVE

Becoming a congregation that does not build walls, but opens doors to all God's beloved people.



GROWING DISCIPLES

Teaching and experiencing Christian faith for adults and children for a life of transformation.



CONNECTING PEOPLE

Building small groups for mission, prayer, fellowship, travel, and support.



PRACTICING GENEROSITY

Giving of our time, talent, and treasure for God's mission in the world.

CONGREGATIONAL EVENTS ~ July 2023

NEW SUMMER WORSHIP SCHEDULE

SUNDAYS, 9AM & MONDAYS, 6PM

(THERE IS NO SATURDAY WORSHIP). Worship will be entirely inside the sanctuary. Both Sunday's and Monday's orders of worship will be the same; music and format to be determined. Worship materials printed & available online.

Holy Communion at the railing or from your seat as needed. Gluten-Free, Wine, Juice and wafer offered.

PASTORAL CARE:

Please contact the church office whenever you are sick, hospitalized, expecting surgeries, any deaths or all care needs that your pastor and faith nurse can provide.

Summer Schedule of SMLC Regularly Scheduled Groups' Activities

Music Groups

Adult Choir~ Off for Season

Contemporary Worship Team ~ Tuesdays (2x month) 5:45pm—Sanctuary

Youth Groups

Off for the Season

Prayer Breakfasts

Women's ~ Tuesdays

@ 8:00am - Hillcrest
Men's ~ Wednesdays
@7:00am - Marina
Garden

Women's Circles

Lydia ~ Off for the Season

Miriam ~ 2nd Tuesday
@1:00pm

Circle of Friends ~ 3rd
Wednesday @1:00pm

Women's Book Club ~
1st Tuesday @2:00pm

Small Groups, Ministries & Support

The Friendly Center ~
Off for the Season

St. Mary's Quilters ~
Mondays @ 9:00am;

BSA Chartered #533~
Off for the season

Resettlement Team
Meeting ~As needed

@3:30pm 1W;
AA,12&12 [non-
smoking] ~ Sundays @
6:00pm (Lo)

Outside Organizations

Building Usage

KAC Sprouts~
Tuesdays @10:00am
(N)

Tremper HS Girls
Cheerleading Practice
@8:00am (G)

Church Office Hours:

Mondays/Tuesdays/
Thursdays:

9:00am-3:00pm

Wednesdays:

Noon—6:00pm

Fridays:

9:00am—Noon

JULY TEMPLE TALKS BY SMLC CHURCH IN SOCIETY

~ ~ ~ ~ ~

ADDITIONAL EVENTS:

JULY 1—JULY 31
CHURCH IN SOCIETY
CHRISTMAS IN JULY

Saturday, July 1, 2023

8:00am Tremper
Cheerleading (G)

Sunday, July 2

9:00am Worship
4:15pm SS Serve at
Shalom Center

Monday, July 3

6:00pm Worship

Tuesday, July 4
**CLOSED FOR 4TH
OF JULY**

Saturday, July 8

8:00am Tremper
Cheerleading (G)

Sunday, July 9

9:00am
CONTEMPORARY
WORSHIP (S)

**1:35pm KINGFISH
BASEBALL GAME**

Monday, July 10

6:00pm HOLDEN
EVENING PRAYER
(S)

Saturday, July 15

8:00am Tremper
Cheerleading (G)

Sunday, July 16

9:00am Worship CIS
COFFEE
CHOCOLATE
SALES

**10:00am ANNUAL
MEETING OF THE
CONGREGATION (S)**

Monday, July 17

6:00pm Worship (S) CIS
COFFEE CHOCOLATE
SALES

Tuesday, July 18

1:00pm Care Team
Workshop (FH)

Saturday, July 22

8:00am Tremper
Cheerleading (G)

Sunday, July 23

9:00am Worship (S)

**DEADLINE FOR
AUGUST SPIRIT**

Monday, July 24

6:00pm Worship (S)

Sunday, July 30

9:00am Worship (S)
Coffee Kringle Mingle
**9:00am-Noon
STELLAR VBS!**

Monday, July 31

**9:00am-Noon
STELLAR VBS!**
6:00pm Worship (S)

Tuesday, August 1

**9:00am-Noon
STELLAR VBS!**

Wednesday, August 2

**9:00am-Noon
STELLAR VBS!**



Check Our Website for Real-
Time Church News
CLICK "CALENDAR"

ST. MARY'S SAINTS' JULY BIRTHDAYS AND ANNIVERSARIES

SUNDAY	MONDAY	TUESDAY	WEDNESDAY	THURSDAY	FRIDAY	SATURDAY
						1
						Dick Sjoerdsma Tony Beer Matthew Crass Michelle Lachman William G. Nelson Dean Suckus
2	3	4	5	6	7	8
Krista Hoth Roxane Sobanski Andrew Spaeth Lynette & Richard Schroeder	Sara Borchardt Robert Ibsen Gonny Tromp	Tammie Borop Luann Hansche Erick Verzal Jenny Workman	Brian Danner James Istvanek Betty & Larry Boyd	Wally Rateike	Amarjit Bedi, Sr. Elsa Bertrandt Elizabeth Matson Carol Shaddock Olivia Timmons	Justine Kerscher Randy Haubrich Emily VanLaningham
9	10	11	12	13	14	15
Darlene Christensen Nancy Johnson Mark Studrawa Mallory & Omar Bortello	Grace Eltoft Jennifer Ours Constance & Eric Wierzbicki	Mark Knapp Lori Martin Benjamin Petersen Josh Williams	Phyllis Brandt Lilly DeFranco Marilyn Doxtater Kyle Podskarbi		Barbara Vorhes	Jared & Jennifer Nehmer Don & Doris Poshak
16	17	18	19	20	21	22
Gary Anderson Kaela Oglesby Pat Ryan Gary Anderson & Karen Ackerman Carole & Mike Scotese	Sofie Duffy	Mark Fox Emma King Nataliya Nikonova-Schoen Lynn Sorenson	Joanna Borchardt Brian Duffy Janet Schoettler Tara & David Shreve	Mitchell Alley Remi and Sulli Haga Kelly Paulson Chip & Rose Niznik-Millholland Jimmy & Sandy Trottier	Larinda Becker Sean Robinson Audrey Shreve	Brenda Gustin Kirsten Miller Gary & Kathy Ladousa
23	24	25	26	27	28	29
Joyce Grapentine John Holmes Drew Sporer Lisa Zanin Harold & Bobbie Frush Kristen & Robert White	Cate VanLaningham	Steven Anderson Pat Rossmann Sue VanBendegom Betty & Lionel Marble Lynda & Pat Ryan	Steve Broughman Christy Burmeister Ava Haberle Dani Turner	Dana Garrigan	Jean Gitzlaff Richard Hujik Dave Shreve	Wilma Anderson Dan Neururer Pamela Tatge Marsha & Rob Davis
30	31					
Jenny Benscoter Kyle Dreger James Leiting Jo Ann Taube Patty & Tom Cnockaert	Alyson and Katelyn Dahl Bobbie Frush					

Don't forget to check out St. Mary's Lutheran Church's website for uploaded Weekly Worship Bulletins, Announcement Sheets, and so much more!

Call the office if you have questions (262) 658-3555

info@stmaryslutheran.org www.stmaryslutheran.org

July 2023 Volunteer Schedule						
CHRISTMAS IN JULY - CHURCH IN SOCIETY COLLECTION						
Sunday	Monday	Sunday	Monday	Sunday	Monday	Monday
July 2	July 3	July 9	July 10	July 16	July 17	July 23
Assisting Ministers						
Harold Frush	Di Michalski	Patti Mason	Patti M/AM & Pat Gallo/Read	Julie Schmit	Harold Frush	Tim Somers
Communion Assistants						
Cheryl Hayes, Christy Burmeister, Andy Schroeder	Lisa/Mark Zanin	Sandy Bear	Lisa/Mark Zanin	Kay Manderfeld, Cheryl Hayes	Edie Iverson, Tim Somers	open
					Edie Iverson, Todd Woller	Edie Iverson, Todd Woller
Council Connection						
Lisa Zanin 262-909-1181 or lzanin1953@gmail.com						
Greeters						
Sharon/Keith Corso	Anne/Ken Winkle	Kay/Dave Manderfeld	Hayley/Kris Jensen	Hayley/Kris Jensen		
Musicians/Instrumentalists						
Deb Black	Laurel Borter	Contemporary Worship	Laurel Borter/Holden Prayer	Deb Black	Deb Black	Deb Black
Altar Team						
Christy Burmeister	Kay Manderfeld	Kay Manderfeld			Mary Saarela	Mary Saarela
Lawn Mowing						
Dave Raszkievicz, Dan Neururer	The Bear Family	Ralph Tollas, Dale Brandes	Bob Van Bendegom, Doug Derginer	Dave Raszkievicz, Dan Neururer		

June 2023 Worship Attendance


4/5: 110

11/12: 75

18/19: 76

25/26: 76

Annual Meeting is Sunday, July 16th after the 9:00am worship service.



We need YOU!


Contact Us!
Email: fostercare@psgipc.com
Phone: 262-654-1004

Kenosha County has a great need for new foster families for all ages of children! Join us for a Foster Care 101 Informational session to find out how you can help children in our community by becoming a foster parent!

LIKE, COMMENT, SHARE & FOLLOW US ON SOCIAL MEDIA

To keep up with the latest updates on our events, programs or activities

SCAN ME



GET THE TITHE.LY APP



KEY CONTACTS—WHO DO YOU CALL?

CHURCH COUNCIL 2022-2023 St. Mary's Church Council meets the 3rd Thursday of each month at 6:30pm. Committee Meeting Day/Times to be reviewed. All are 1+(262) unless otherwise noted. Council liaisons are as follows:

AUDIT

Jerry Green.....945-2783
jgreen46@yahoo.com

CARING

Lisa Rasmussen-Zanin.....909-1181
lzanin1953@gmail.com
Lana Woller.....697-9908/945-7563 c.
t.woller3@yahoo.com

CHURCH IN SOCIETY 2ND THURSDAY, 1:00PM

Margaret Van Boven.....694-8281
mav5804@gmail.com
Patricia Mason.....721-8065
godslittlesinger71@gmail.com

EDUCATION

Stephanie Raszkiewicz.....945-7519
stephrz01@yahoo.com
Lana Woller.....697-9908/945-7563 c.
t.woller3@yahoo.com

FINANCE

Julie Schmit.....818-1571
schmit517@sbcglobal.net
Christine Johnson.....818-8879
chris.johnson1800@gmail.com

THE FRIENDLY CENTER

Lisa Rasmussen-Zanin.....909-1181
lzanin1953@gmail.com

NOMINATING AS NEEDED

Dana Larsen.....414-748-0448
dana.larsen.wdc@gmail.com

PERSONNEL AS NEEDED

Julie Schmit.....818-1571
schmit517@sbcglobal.net
Christine Johnson.....818-8879
chris.johnson1800@gmail.com
Carol Gillmore.....654-8986
gillmore8041@gmail.com

PROPERTY

Keith Richter.....697-2359/948-9020 c.
ktrichter25@gmail.com
Christine Johnson.....818-8879
chris.johnson1800@gmail.com

STEWARDSHIP AS NEEDED

Stephanie Raszkiewicz.....945-7519
stephrz01@yahoo.com

WORSHIP MUSIC ARTS 2ND TUESDAY, 5:30PM

Julie Schmit.....818-1571
schmit517@sbcglobal.net
Patricia Mason.....721-8065
godslittlesinger71@gmail.com

YOUTH

Adam Fonk.....649-6389
adamfonk@gmail.com

Council Connection for July is Lisa Zanin.
Lisa Zanin 262-909-1181 or
lzanin1953@gmail.com

"C12.04. The Congregation Council shall have general oversight of the life and activities of this congregation, and in particular its worship life, to the end that everything be done in accordance with the Word of God and the faith and practice of the Evangelical Lutheran Church in America."

CHAPTER 12 CONGREGATION COUNCIL, PG. 15 SMLC CONSTITUTION

ST. MARY'S STAFF:

Rev. Kathy Brown.....INTERIM PASTOR
pastorkb@stmaryslutheran.org 262-799-5791 or ext. 333
Debbie Hartfield.....MINISTER OF PASTORAL CARE
pastordeb@stmaryslutheran.org 262-599-5795 or ext. 343
Nurse SueADVOCATE FAITH AND HEALTH COMMUNITY PROGRAM/CARE MINISTRY COORDINATOR
FCN@stmaryslutheran.org(call church office)
Beth Kerscher.....ADMINISTRATIVE ASSISTANT
bkerscher@stmaryslutheran.orgext. 300
Sondra Kuro.....BOOKKEEPER
bookkeeper@stmaryslutheran.orgext. 323
RECEPTION.....FRONT DESK VOLUNTEERS
info@stmaryslutheran.orgext. 303

Deb Black.....ORGAN/PIANO ACCOMPANIST
Laurel Borter.....PIANO/ORGAN SATURDAYS
Dr. Richard Sjoerdsma.....ADULT CHOIR DIRECTOR
Madeline Weirick.....JUBILATE! BELL CHOIR DIRECTOR
Kristofer Twadell.....SOUND/VIDEO TECHNICIAN

Kris' last day of work is July 31st—he is leaving St. Mary's to pursue his master's degree at a university in North Carolina. Kris will be instrumental in the hiring of his replacement, but no one can replace Kris— "You've been such a major asset to the worship experiences online for St. Mary's & we will miss you very much!"



Treasurer's Report: May 2023

Income Actual	\$39,479.93
Expenses Actual	\$37,987.32
Profit/Loss	+ \$1492.61

Fiscal Year-to-date 22/23

Income Actual	\$461,796.63
Expenses Actual	\$472,243.54
Profit/Loss	- \$10,447.51

*The current Year-to-date percentage of electronic giving to total offerings given is 31%.

THE SPIRIT

the newsletter of
ST. MARY'S LUTHERAN CHURCH
www.stmaryslutheran.org
July, 2023

St. Mary's Lutheran Church
2001 80th Street
Kenosha, WI 53143
RETURN ADDRESS REQUESTED

What's inside....

Christmas in July News	Page 1
Message from Interim Pastor Kathy Brown.....	Page 2
Message from Council Co-Presidents.....	Page 3
Faith Community News.....	Pages 4-5
SMLC Youth News	Page 6
Pastor Debbie / Endowment News.....	Page 7
Debbie's Ordination Photos!.....	Pages 8 & 9
News You Can Use!.....	Pages 10 & 11
Congregational Events.....	Page 12
Celebrations.....	Page 13
Volunteer Schedule.....	Page 14
Key Contacts.....	Page 15

©The Spirit of St. Mary's Lutheran Church
June 30, 2023 Volume 28, Issue 7

LOVE BOOKS?!

Do you enjoy reading a good book?

ST. MARY'S BOOK CLUB
MEETS ON AUGUST 1, 2023 AT
2 PM IN THE CHURCH LIBRARY.



YOU are **WELCOME** to **JOIN** us!
The book selection for August 1st is
Someone Else's Shoes by Jojo Moyes.
This is a selection from Liz's Book Club.

