

# The Church Organs The Memorial Tower Carillon



## [The Table of Contents](#)

### [Early History](#)

### [The First Pipe Organ](#)

### [The Second Pipe Organ](#)

### [The Third Pipe Organ](#)

### [Appendix A](#)

St. Stephen's Church Burned (The Dispatch News \* 1899)

### [Appendix B](#)

Pipe Organ Being Installed (The Dispatch News \*1922)

### [Appendix C](#)

Dedicatory Services at St. Stephen's Church (The Dispatch News \*1922)

### [Appendix D](#)

Specifications ~ The PELS Organ 1958

### [Appendix E](#)

Specifications ~ M.P. Möller 1978 Opus #11336

### [Appendix F](#)

Specifications ~ Möller/Walker/Cornel Zimmer 2010

### [Picture Gallery](#)

## [The Memorial Carillonic Bells & Tower Music System](#)

## *The Church Organs of St. Stephen's Lutheran Church (1922-2015)*

*119 North Church Street*

*Lexington, South Carolina 29072*

The music of liturgical worship, for generations, has attracted the best musicians and highly trained organists. For many centuries, the organ has been the instrument of choice to lead liturgical worship. The organ is the only instrument that provides a massive color pallet of sounds, from very soft to a grandiose ensemble – all commanded by one player! The history of organ dates back to the 3<sup>rd</sup> century BC. It became more prominent with standards for design and development beginning in the 1600's. The Lutheran Church owes much to J. S. Bach, a German Lutheran, for his musical compositions and organ styles that remain intact today. Organs have always produced sounds through wind-blown pipes, hence the pipe organ. Every organ up to 1939 had wind-blown pipes (the good, the bad and the ugly). Technology has provided a plethora of progress since then and the modern digital organ is part of the revolution.

Many of St. Stephen's records were lost in fires in the late 1800's. No records exist of early organs before 1888. Music was provided by the player pumping an organ with a single keyboard whose sounds were produced from wind being sucked through a tuned metal reed. These type reed organs gained prominence in the US in the late 1800's thru the turn of the century. They were eventually replaced by pipe organs as American pipe organ builders developed and financial resources permitted. The first two church structures for SSLC were wooden. The first stone structure (the Rock Church)



Photo on September 29, 1929

was built on the front corner – the front lawn of the existing edifice. The St. Stephen's pump organ served from the late 1800's until the first pipe organ installed 1922. [Appendix A](#) contains the article of February 9, 1889 from the Dispatch News describing the destructive fire of the 2<sup>nd</sup> St. Stephen's building. It is noted that the Pump Organ and stool along with some chairs were saved! The church records & library were lost in this fire.

These early pump organs and pianos, unlike more modern ones, did not have self-playing mechanisms. Trained pianists or organist were employed or volunteered their services. The earliest known organist/choir director at St. Stephen's is Mrs. Alice Meetze Butler. While little is known of her, Mrs. E. B. Roof substituted for Mrs. Butler on many occasions. Mrs. Roof served SSLC Music from 1888 - 1937 just a few months short of 50 years. She also taught music in the Lexington school. [This document](#) aptly describes "Mrs. Fannie" Roof's history in Lexington and her service to St. Stephen's along with that of her husband Mr. Belton Roof.

Another Lexington musician icon was Miss May Boozer. Miss May was born in 1892. Mrs. Roof and Miss Boozer were the 'town musicians' at the turn of the century. Miss May became St. Stephen's musician in 1938 and served until her retirement in 1965. The Lexington High School Annual in 1964 was dedicated to Miss May. Believe it or not, private piano was taught in the Lexington public school system until mid-1980!



Miss May Boozer ~ 1964

At the PELS Pipe Organ

## THE FIRST PIPE ORGAN (M.P. Möller)

The first pipe organ was installed in St. Stephen's May of 1922. The instrument had two manuals, 11 stops (7 ranks), 6 pistons, 8 couplers and 398 pipes. A balcony was constructed in the back of the 'Rock Church' (built 1900) to house the organ and the choir. This first pipe organ was built by the M.P. Möller Organ Company of Hagerstown, Maryland. The Möller Company, established in 1875, was the major organ builder of the day. The installation was completed in time for the dedication concert held on June 25, 1922 at 4:00pm. See [Appendix B](#) for the Dispatch News article about the installation.

The Dedication concert was performed by Mrs. E. B. Roof and local musicians. View the concert program in [APPENDIX C](#) as published in the Dispatch News on June 21, 1922. The contract to build this organ was signed April 17, 1922 for a total cost of \$3,000.00. The Reverend Dr. Arthur B. Obenschain was the Pastor. This pipe organ was a predominant instrument for the Lexington Community as well. Note the [Program Centennial Celebration](#) for St. Stephen's (1830-1930) held August 27, 28, 29 & 31, 1930.

## THE SECOND PIPE ORGAN (PELS)

In the early 1950's a building fund was started for the purpose of constructing a new and larger church plant. In January of 1957 the contract for construction of our present sanctuary was issued. The buildings with furnishings cost a little more than \$315,000. Ground breaking was held February 3, 1957. The church plant was completed and the [Services of Dedication](#) were held March 23, 1958. The second pipe organ was built for this new sanctuary by the PELS Organ Company of Alkmaar, Holland with offices in Grand Rapids, MI and Santa Barbara, CA. The contract to build was signed March 9, 1957 for a total of \$11,900.00 by Mr. C. E. Black and the Rev. Ralph I. Luman. St. Stephen's was afforded special pricing on the instrument as a special demonstrator organ for the PELS Company. The organ pipes and equipment were installed in a special organ chamber on the north wall of the Chancel (the large brown grille the full length of this wall is for tonal egress). The console was located in the south transept adjoining the nave facing the Chancel. The size of the organ was considerably larger than the first pipe organ. The PELS had a two manual console, 32 note pedalboard and bench and met the American Guild of Organists standard for size and control placement. The original organ consisted of 15 stops, 17 Ranks, 9 couplers, 9 setter pistons controlling a total of 1116 pipes from 16' tall down to the size of a pencil. An additional softer stop (Dulciana 8') was added to the Great manual in 1962. The specification for the PELS organ is found in [APPENDIX D](#).

The placement of this organ, however, was not conducive to good sound distribution throughout the nave and transepts. Problems with the organ required the main chests to be returned to the PELS factory in January 1960. The present church is built of solid masonry. The interior walls and partitions are of concrete blocks or brick and are veneered with Salisbury granite. The interior walls of the organ chamber over the years absorbed excessive moisture through the stone and the interior concrete finish turned to powder. Over time, the suction of the organ blower (located on the chamber floor) collected this powder and coated the inside of the organ chests, basically making them unreliable and causing premature failure. The conditions of the organ lead to the need to purchase a third pipe organ in 1978. The PELS was sold, rebuilt and installed in the Ingram residence on Corley Mill Road, Lexington, SC.



A novice would be interested to know that a pump organ made sound by sucking air through a vibrating metal reed. A pipe organ on the other hand, blows air through an organ pipe to make sound. You might associate a pipe organ pipe with a whistle since the physics of their sound are identical. Pipe organs are more powerful with higher wind pressure and have pipes made of metal and wood to produce different characters of sound. A point of definition, a RANK is one set of pipes each having the same sound (color or character) representing all notes/pitches of the scale. A typical rank for manual stops has 61 individual pipes and for the pedal stops 32 individual pipes.

### **THE THIRD PIPE ORGAN (M.P. Möller Opus #11336)**

The decision was made in 1977 to purchase a second M. P. Möller pipe organ. Because of the environmental and performance issues with the PELS organ, the decision was made to move the organ and choir to the balcony. The original 160 seats were removed to make room for the organ and provide seating for the choir and handbells. The console was located dead center against the balcony rail to allow for excellent control by the organist, ease of accompanying and a line-of-site that permits an organist/director combination.

The M. P. Möller pipe organ Opus #11336 was installed in 1978 at a contract price of \$74,507.26. The new three-manual console controlled 24 ranks containing 1,348 pipes, 4 divisions, 25 stops and 22 registers. M.P. Möller built almost 12,000 instruments in their history until closing their doors in 1993. The specification for Opus #11336 is found in [Appendix E](#).

In 2005, major work was performed on the organ updating the console to solid state/digital controls, adding 40 digital organ voices including a new unexpressed Antiphonal Division in the Chancel. A new pipe façade was also added on each side of the Altar. All voices in the Chancel are digital with the associated (8) speakers positioned at the base of the façade in specially constructed trays. The sub-bass pedal speaker is located in the original organ chamber in the Chancel. The main digital voices speak from the Balcony (Gallery) with the pipe organ. The Walker Technical Company provided the digital voice additions. The complete 2005 project was Opus 92 of Cornell Zimmer Organ Builders of Denver, North Carolina. These additions were contracted for \$100,480.

In 2011, new controls were added to the console to express (control the volume) of the Antiphonal Division in the Chancel, make the Antiphonal division sound from the balcony and add an additional pedal speaker system in the Balcony for better balance throughout the church. The addition of over 200 MIDI organ voices enhanced the specification further. The organ is now playable from the Balcony or antiphonally via a MIDI Keyboard or Console. These additions were contracted for \$11,500.00.

The complete specifications for the current St. Stephen's Möller/Walker organ are found in [Appendix F](#).

#### **PRIMARY RETIRED ORGANISTS**

Mrs. E. B. Roof (1888-1937)

Miss May Boozer (1938-1965)

Mrs. Sylvia Looney (1965-2010) *Organist Emiratis*

Dr. Sally Cherrington Beggs (2010-2012)

James W Ingram, Jr (2010 – 2015)



**St. Stephen's Church Burned.**

Yesterday between 12:30 and 1 o'clock, flames and smoke were seen issueing from the belfrey of St. Stephen's Lutheran church and in almost an incredible short time the entire building was wrapped in flames. The origin of the fire is one of those impenetrable mysteries that will never be solved. The opinion of those who first arrived at the scene of conflagration is that the fire started in front of the church somewhere in the neighborhood of the stairs leading to the Masonic hall in the upper story of the building. The Masons met last Saturday but had no fire. The Lutherans had services both Sunday morning and night at both of which they had fire but the stove was located in the rear of the building and if the fire started where it is said it did the fire could not possibly have originated from the stove.

The building was erected in 1870 on the site of the former building which was burned by Sherman's bummers in 1865. It was erected jointly by the members of St. Stephen's and Lexington Lodge No. 152 A. F. M. and since then the first floor has been used by the Lutherans as a place of worship and the second floor by the Masons as a lodge room.

Such rapid headway did the flames make that it was possible to save only the organ, stool, four chairs and two Bibles from the lower and nothing from the upper floor. The loss was complete and there was insurance upon nothing. The Masons lost in furniture and paraphernalia about \$200.

It is but proper to say that the Sunday school lost everything including a valuable library.

Grand old St. Stephen's is laid in ashes and no more will the Gospel of reconciliation be preached within its sacred walls. We trust, however, a better and more modern building will shortly be erected where this congregation can worship their God under their own vine and fig tree.

We have been requested to announce that until other arrangements can be made, the members of this congregation will worship in the Episcopal Chapel, at the usual hours which has been kindly placed at their disposal by Mr. C. S. Bradford.



---

### PIPE ORGAN BEING INSTALLED.

---

At St. Stephen's Evangelical Lutheran church a new pipe organ is being installed. The same will be completed on Friday and will be played at the evening service this Sunday. It is a Moller Patent Tubular-Pneumatic Organ, and has two manuals, eleven stops, six pistons, eight couplers, and three hundred and ninety-eight pipes. This organ will be dedicated the last Sunday of June, the 25th, at four o'clock in the afternoon.

---



## **DEDICATORY SERVICES**

### **AT ST. STEPHEN'S CHURCH.**

The following musical program will be rendered at St. Stephen's Lutheran church Sunday afternoon at 3:45 o'clock as part of the dedication services:

#### **Program.**

"Largo from the 'New World' Symphony", Dvorak—Mrs. E. B. Roof.

"Angel's Serenade," G. Braga—Messrs. Lewis B., George D., and Mrs. E. B. Roof.

"Offertory in B. flat", Read—Miss Veda H. Barre.

#### **Order of Service.**

Hymn No. 61.

Versicle.

Psalm No. 150.

1st Lesson—2nd Chronicles 5:11-14.

Anthem—"O Praise God in His Holiness", Kirkpatrick—By choir.

2nd Lesson—Psalm 98.

Hymn No. 245.

Sermon by the Rev. H. J. Black, President of the Evangelical Lutheran Synod of South Carolina.

Offertory Solo—"How Lovely Are Thy Dwellings," Liddle—Mrs. Sam P. Roof.

Announcements.

Dedication.

Hymn No. 59.

Versicle.

Nunc Dimittis.

The Prayers.

Benediction.

Doxology.

Postlude.

The organ is a two manual one with three hundred and ninety-eight pipes made by M. P. Möller, Inc., Hagerstown, Md.

Pitch	Stop Name	Source	Notes
<b>PEDAL</b>			
16	Bourdon	32 Pipes	Unexpressed
8	Flute	12 Pipes	Exposed
8	Diapason (GT)		
<b>SWELL</b>			
8	Rohrflote	Manual II	Expressed (SW)
8	Gamba	73 Pipes	
8	Gamba Celeste	73 Pipes	
4	Nachthorn	73 Pipes	
III	Mixture	219 Pipes	
8	Trumpet	73 Pipes	
8	Oboe	73 Pipes	
	Tremulant		
	Swell to Swell 16'		
	Swell to Swell 4'		
<b>GREAT</b>			
8	Diapason	Manual I	Unexpressed
8	Bourdon	61 Pipes	
8	Dulciana	61 Pipes	Addition 1960
4	Octave	61 Pipes	
III-IV	Mixture	232 Pipes	
	Chimes	Schulmerich	1946 Mechanical Struck Rod
	Great to Great 16'		
	Great to Great 4'		
<b>COUPLERS</b>			
16	Swell to Great		
8	Swell to Great		
4	Swell to Great		
8	Great to Pedal		
8	Swell to Pedal		
<b>EXPRESSION</b>			
	SWELL		Expression Shoe (SW)
	CRESCENDO		Expression Shoe
<b>CAPTURE</b>			
	Generals 1-3		Great Manual Pistons
	Great Division 1-3		Great Manual Pistons
	Swell Division 1-3		Swell Manual Pistons
	Sforzando		Toe Piston (Mechanical Reversible)
	Gen Cancel		Great Manual Piston

# APPENDIX E - ORGAN SPECIFICATIONS\_M.P. MÖLLER \_OPUS #11336

Pitch	Stop Name	Source	Notes
<b>PEDAL</b>		<b>Exposed</b>	
16	Subbass	32 Pipes	
16	Gedecktbass (CH)	Pipe	
8	Principal	32 Pipes	
8	Holzgedeckt 8 (CH)	Pipe	
4	Choral Bass	32 Pipes	
16	Fagotto	32 Pipes	
4	Fagotto	24 Pipes	
<b>SWELL</b>		<b>Manual III</b>	<b>Expressed (SW)</b>
8	Viole de Gambe	61 Pipes	
8	Viole Celeste	49 Pipes (tc)	
8	Rohrflute	61 Pipes	
4	Flachflute	61 Pipes	
2	Blockflute	61 Pipes	
1 1/3	Quintflote	61 Pipes	
8	Trompette	61 Pipes	
16	Swell to Swell		
8	Swell Unison Off		
4	Swell to Swell		
<b>GREAT</b>		<b>Manual II</b>	<b>Exposed</b>
8	Principal	61 Pipes	
8	Bourdon	61 Pipes	
4	Octave	61 Pipes	
2	Super Octav	61 Pipes	
	Mixture III-IV	220 Pipe2	
	Chimes	25 Note	1970 Mass Rowe Brass Tubular Chimes
4	Great to Great		
<b>CHOIR</b>		<b>Manual I</b>	<b>Expressed (CH)</b>
8	Holzgedeckt	61 Pipes	
8	Erzahler	61 Pipes	
4	Spitzflute	61 Pipes	
2	Principal	61 Pipes	
8	Krummhorn	61 Pipes	
	Tremulant		
16	Choir to Choir		
4	Choir to Choir		

*M. P. Möller*

### **COUPLERS**

8	Great to Pedal
4	Great to Pedal
8	Swell to Pedal
4	Swell to Pedal
8	Choir to Pedal
4	Choir to Pedal
16	Swell to Great
8	Swell to Great
4	Swell to Great
16	Choir to Great
8	Choir to Great
4	Choir to Great
16	Swell to Choir
8	Swell to Choir
4	Swell to Choir

### **EXPRESSION**

CHOIR  
SWELL  
CRESCENDO

Expression Shoe (CH)  
Expression Shoe (SW)  
Expression Shoe

*M. P. Möller*



Pitch	Stop Name	Source	Notes
<b>PEDAL</b>			<b>Unexpressed</b>
32	Contre Bourdon	Digital	Reversible Toe Piston
16	Principal	Digital	
16	Subbass	Pipe	Exposed
16	Violone (GT)	Digital	
16	Gedecktbass (CH)	Pipe	
8	Principal	Pipe	Exposed
8	Holzgedeckt 8 (CH)	Pipe	
8	Gemshorn (CH)	Digital	
4	Choral Bass	Pipe	Exposed
4	Rohrflute	Digital	
16	Holz Posaune	Digital	
8	Basson	Digital	
8	Trumpet	Digital	
4	Clarinet (CH)	Digital	
8	Trompette En Chamade	Digital	ANT - Non Coupling
	MIDI A		Keycheek Piston
	MIDI B		Keycheek Piston
<b>Antiphonal PEDAL</b>			<b>Expressed (CH)</b>
16	Bourdon	Digital	
8	Offenbass	Digital	
16	Fagott	Digital	
8	Basson	Digital	
<b>SWELL</b>		<b>Manual III</b>	<b>Expressed (SW)</b>
8	Geigen Diapason	Digital	
8	Viole de Gambe	Pipe	
8	Viole Celeste	Pipe	
8	Rohrflute	Pipe	
4	Principal	Digital	
4	Flachflute	Pipe	
2 2/3	Nazard	Pipe	
2	Blockflute	Pipe	
1 3/5	Tierce	Digital	
2	Plein Jeu III	Digital	
16	Basson	Digital	
8	Trumpet	Pipe	
8	Oboe	Digital	
8	Trompette En Chamade	Digital	ANT - Non Coupling
16	Swell to Swell		
8	Swell Unison Off		
4	Swell to Swell		
	MIDI A		Keycheek Piston
	MIDI B		Keycheek Piston

Pitch	Stop Name	Source	Notes
<b>GREAT</b>			
16	Violone	Digital	<b>Exposed</b>
8	Principal	Pipe	
8	Violone	Digital	
8	Bourdon	Pipe	
4	Octave	Pipe	
4	Koppelflute	Digital	
2	Super Octav	Pipe	
	Mixture III-IV	Pipe	
8	Trumpet	Digital	
8	Trompette En Chamade	Digital	
4	Great to Great		ANT- Non Coupling
	MIDI A		Keycheek Piston
	MIDI B		Keycheek Piston
<b>CHOIR</b>			
	Gemshorn	Digital	<b>Expressed (CH)</b>
	Gemshorn Celeste	Digital	
8	Holzgedeckt	Pipe	
	Flute Celeste II	Digital	
4	Principal	Pipe	
4	Spitzflute	Pipe	
2	Principal	Pipe	
1 1/3	Larigot	Digital	
1	Sifflote	Digital	
8	Krummhorn	Pipe	
8	Clarinet	Digital	ANT - Non Coupling
8	Trompette En Chamade	Digital	
	Tremulant		
16	Choir to Choir		
8	Choir Unison Off		
4	Choir to Choir		
	MIDI A		Keycheek Piston
	MIDI B		Keycheek Piston
	Zimbelstern	Mechanical	Choir-Expressed. Reversible Toe Piston
<b>MIDI VOICES</b>			
	MX-200 Rodgers		

Pitch	Stop Name	Source	Notes
<b>ANTIPHONAL</b>			<b>Expresssed (CH)</b>
8	Principal	Digital	
8	Dulciana	Digital	
8	Dulciana Celeste	Digital	
8	Spitz Flute	Digital	
4	Octave		
	- Digital		
4	Nachthorn	Digital	
2	Blockflute	Digital	
2	Mixture III	Digital	
8	Cornopean	Digital	
	Chimes	Digital	
	ANT Gallery On		
	ANT Chancel OFF		
<b>COUPLERS</b>			
8	Great to Pedal		Reversible Toe Piston
4	Great to Pedal		
8	Swell to Pedal		Reversible Toe Piston
4	Swell to Pedal		
8	Choir to Pedal		Reversible Toe Piston
4	Choir to Pedal		
8	Antiphonal to Pedal		
4	Antiphonal to Pedal		
16	Swell to Great		
8	Swell to Great		
4	Swell to Great		
16	Choir to Great		
8	Choir to Great		
4	Choir to Great		
16	Swell to Choir		
8	Swell to Choir		
4	Swell to Choir		
8	Antiphonal to Swell		
8	Antiphonal to Great		
8	Antiphonal to Choir		
	Great/Choir Exchange		

## EXPRESSION

CHOIR  
SWELL  
CRESCENDO

Expression Shoe (CH)  
Expression Shoe (SW)  
Expression Shoe

## CAPTURE

Generals 1- 10  
Great Division 1-5  
Swell Division 1-5  
Choir Division 1-5  
Pedal Division 1-5  
Tutti  
Crescendo II  
SET  
Gen Cancel

Manual & Toe Pistons  
Great Manual Pistons  
Swell Manual Pistons  
Choir Manual Pistons  
Pedal Toe Pistons  
Reversible Manual & Toe Piston  
User Settable by Memory Level  
Press to Capture/Walker Paradox  
Choir Manual Piston

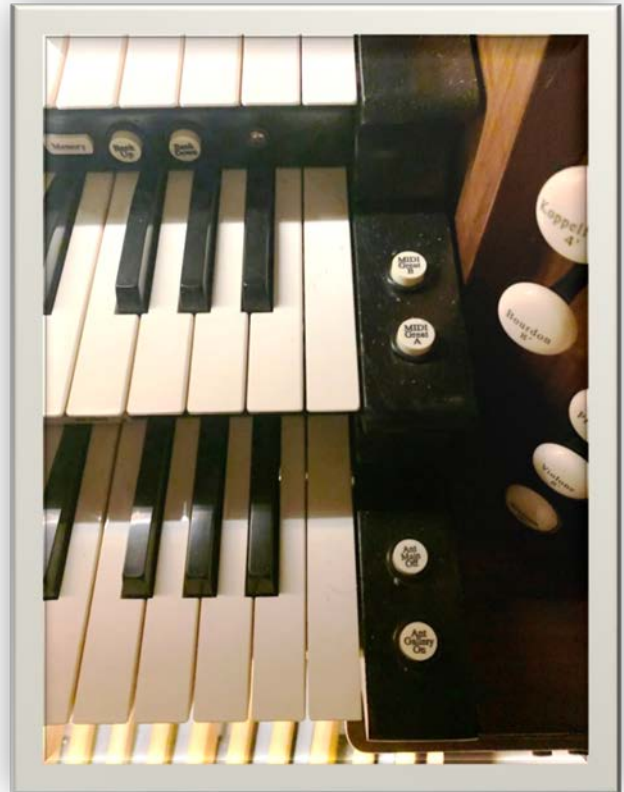
Bank Up (1 - 16)  
Bank Down  
Level Up (A-N)  
Level Down

16 Total Banks (1 - 16)

14 Total Levels (A-N)









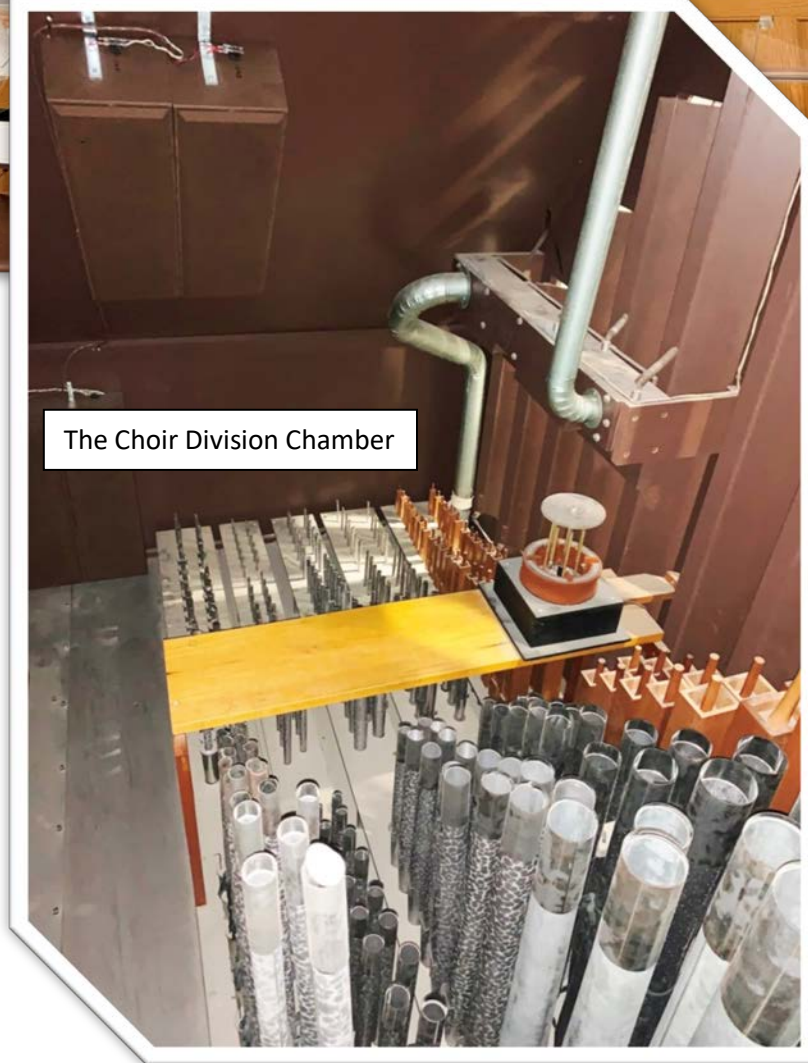
Pedal Division & Swell Chamber



Great Division & Choir Chamber



Great Division & Pedal Choralbass



The Choir Division Chamber





The Swell Division Chamber  
Basses



The Swell Division Chamber  
Trebles

[Return to Link](#)





Carillonic Tower Bells were installed in the steeple of the 'Rock Church' in 1946. This unique bell system was electronic, in contrast to the traditional cast bell. These new bell systems produced sound by striking a tuned metal rod. Twenty five of these rods formed the Tone Generation System. The vibrating rod for each note played was then tube amplified through speakers installed in the tower. The system was designed and manufactured by Schulmerich Electronics of Sellersville, Pennsylvania, purchased at a cost \$3,775.00.

At the entrance of the Parish Building of the 'Rock Church' was a beautiful oak case about six feet tall that housed the unit along with a record player turntable. Bell melodies could be played from a separate keyboard by the musician through an internal speaker in the sanctuary, and when switched on, could be heard outdoors through two horns mounted in the steeple. The record player allowed bell music (or any 78 rpm record) to be played outdoors. While this unit at SSLC could have been played by a roll mechanism similar to that on a player piano, it was not automated and had to be played manually.

During construction of the 1957 sanctuary, the entire system was updated, moved and installed in the sacristy with 4 new speakers in the vertical openings of the new spire. The tone generators were wall mounted in a large metal case. Connections to the PELS organ were made to allow the organist to control and play the bells directly from the organ keyboard. Because this instrument was electronic, the amplification of speech through microphones provided the first sound system for St. Stephen's new sanctuary. If you notice the two small arched areas over the hymn boards at the entrance to the chancel, the brown grille cloth covers speakers that were located there for the original sound system. Monitor speakers were also installed in other locations of the church buildings. The renovation and moving costs to the new sanctuary was \$745.00.

Carillonic Bells (Symphonic Bells) are designed to reproduce sound like a cast bell – the real thing without all the cost associated with casting bells and building a massive supporting structure for tons of weight. These English bells were not tuned like pianos and organs, therefore, could not be played successfully with the organ. A set of solenoid-struck brass tubular chimes became a popular addition to church organs because they were 'in tune' and could be played with the organ. A 25 note set of tubular chimes manufactured by Mass Rowe of California, was purchased in 1970 for \$1,970.00, installed in the organ chamber and made playable from the organ console. These chimes were moved and connected to the new M.P. Möller organ in 1978 in the balcony.

After 55 years, the original Schulmerich Carillonic Tower Bells needed to be replaced. Schulmerich was again chosen to build the new *Campanile Gen 4 Carillon* instrument in November of 2001. This \$17,000 system provides a multitude of bells and controls. New speakers were installed in the spire and the now fully automated system strikes the hour, plays bell peals for weddings and tolls for funerals. All the sounds you hear are generated by digital computers with a complete library of hymns and special music all stored on flash memory. The system is not connected to the organ, but has an independent propriety keyboard connected via fiber optics allowing bell melodies to be played by a musician.



Schulmerich  
**Campanile Gen 4  
Carillon Instrument**

Installed 2001  
In the Balcony



**Program of the Dedication**  
of the  
**Carillon Bells and Tower Music System**

**St. Stephen's Evangelical Lutheran Church**  
Lexington, South Carolina

Rev. Arthur B. Obenshain, D.D., Pastor

June 30, 1946, 8:00 P.M.

# Order of Service



MISS MAY L. BOOZER, Organist

Prelude.

Hymn 198—"The Church's One Foundation."

Vespers—Page 32.

The Psalm, 150—Page 350.

The Lessons—Numbers 10:1-10; St. Mark 4:26-29; 1st Corinthians 3:6-23.

Hymn 424—"God Himself Is Present."

Office for the Blessing of the Carillonic Tower Bells:

Our help is in the Name of the Lord.

Response: Praise God in His sanctuary: praise Him in the firmament of His power.

Give unto the Lord the glory due unto His Name:

Respons: Worship the Lord in the beauty of holiness.

Glory be to the Father, and to the Son, and to the Holy Ghost:

Response: As it was in the beginning, is now, and ever shall be, world without end. Amen.  
The Lord be with you.

Response: And with thy spirit.

Let us pray.

O God who by Thy servant Moses didst command that silver trumpets should be made to call the people to holy assemblies; bless, we beseech Thee these Carillonic Tower Bells, dedicated to Thine honor and glory, and grant that their voices may sound forth from generation to generation, ever calling Thy children to holy convocation in praise and worship of Thy glorious Name; through Jesus Christ, Thy Son, our Lord.

Response: Amen.

Blest and dedicate be these Bells to the honor and glory of Almighty God, in the Name of the Father, and of the Son, and of the Holy Ghost. Amen.

Sing forth the honor of His Name: make His praise glorious.

Hallowed also be these Bells in honor of the men and women of St. Stephen's Evangelical Lutheran Church who were in the Service of our Country in World War II. (The largest bell shall be struck three times, thrice, then all the bells—in perfect scale—shall be struck in rotation, beginning with the highest in tone, and running down the scale to the lowest; this shall be done thrice, and then shall the largest bell be rung seven times.)

The Intercessory Prayer:

Almighty God, Who didst endow Thy children with manifold gifts and graces, blessing their lives with the treasures of beauty and harmony, and dost make skillful their hands to the creation of the useful and the beautiful: Accept this our offering which we have dedicated to Thy service and grant that its use may ever be an hallowed one and that its sound may never cease to call men unto Thee:

Response: We beseech Thee to hear us, O Lord.

We humbly pray that its voice may ever be a joyful sound to Thy children, calling them to worship and prayer, that they may enter into Thy gates with thanksgiving and into Thy courts with praise:

Response: We beseech Thee to hear us, O Lord.

We humbly pray that its voice may ever be a calling to remembrance to those who have strayed from Thy Way;

That it may call in solemn rebuke to the careless and indifferent;

That it may ring forth a sure welcome to the sinner and whosoever will come:

Response: We beseech Thee to hear us, O Lord.

We humbly pray for those, who, through the sorrows and sufferings of this present life, are prevented from coming to Thy House, that its sound may bring to mind Thy love and compassion for all who suffer:



# Order of Service



Thy courage and help for those who are sore beset;

Thy peace for those who are heavy laden; and

Thy comfort for those who mourn:

Response: We beseech Thee to hear us, O Lord.

We humbly pray that when it tolls forth the message of the passing of a soul into the Life that knows no ending, we may rejoice and give thanks for the victory which our Lord Jesus Christ, Thy Son, hath obtained for us and for all who sleep in Him, and ever seek Thy grace that we may so live as to enter the rest prepared for the children of God:

Response: We beseech Thee to hear us, O Lord.

And when it sounds forth, far and wide, in rejoicing and thanksgiving, may we lift up our hearts in adoration and praise to Thee, O God, the Father, the Son, and the Holy Ghost, Who livest and reignest evermore.

Response: Amen.

(Then shall the Minister and Congregation say the Lord's Prayer.) (As the Lord's Prayer is prayed the Prayer Bell shall be rung )

Hymn—

Aloft in yonder tower,  
Now sound our hallowed bells;  
Whene'er we hear their message,  
O may we heed it well.  
Their notes, to us appealing,  
In tones so rich and clear,  
Shall call us all together,  
God's Holy Word to hear.

Their joyous peals resounding  
On every common day  
Should stir our hearts to gladness,  
To sing, to love, to pray.  
And when our spirits waver,  
Or trials harsh assail,  
Then may their sacred message  
Say: Christ shall never fail.

Thus shall our joys and sorrows  
Be mingled with their sound,  
'Til we in heaven's mansions  
God's holy throne surround,  
With many thousand voices,  
To glorify the Lord,  
Whose name by men and angels,  
Is worshipped and adored.

The Sermon—The Rev. Karl W. Kinard, D. D., President of the Evangelical Lutheran Synod of South Carolina.

The Offering.

The Offertory—Duet, "Hark! Hark! My Soul" (by Rockwell), Mrs. J. A. Barre and Mrs. J. D. Carroll.

Hymn 202.

Versicle and Response—Page 33.

The Canticle—The Nunc Dimittis, page 34.

The Prayer.

The Benedicamus—Page 36.

The Benediction.

Hymn 467.



# *The Plaque:*

Carillonic Bells and Tower Music System

Are Dedicated

to

The Glory of God

And In Honor of the Men and Women From

St. Stephen's Evangelical Lutheran Church

Who Served In the Armed Forces

World War II.

June 1946.



Those who served in World War II from St. Stephen's  
Evangelical Lutheran Church:

Keith L. Addy, Lindsay W. Addy, Lonnie B. Addy, Jr., Benjamin F. Barrett, Brooks T. Bennett, Robert H. Berly, Jr., F. U. Wise Black, Simon D. Bouknight, Jr., John Simon Caughman, Robert Sox Caughman, Howard C. Childers, William G. Childers, William D. Conrad, Robert E. Cook, Jr., Christopher H. Corley, Murry E. Corley, Robert O. Derrick, James Franklin Dreher, William Charles Efird, Sr., John R. Grimsley, Edith Roof Geiger, Otis J. George, Robert O. Harmon, Odis L. Harmon, Jr., Leon Eugene Harmon, Jr., Thomas W. Hendrix, Wilbur L. Hendrix, J. Wyman Ingram, James Elton Kaiser, Tally R. Keisler, Jr., Robert Eugene Leaphart, William Wade Lorick, Jr., Norman A. Lowman, Elias S. Mack, Jr., Arthur Edwin Mack, Francis Tillman Mathias, Jr., Fred B. Mathias, John H. Mathias, Jr., Hubert LaBorde Mathias, A. Danner Martin, Jr., Robert Marion Martin, Marvin Wayne Miller, Edward K. Mitchell, Jr., Roger T. Mitchell, George Graham Oswald, Holland Cromer Oswald, Jr., Otto F. Reenstjerna, Duke Richardson, William Franklin Risinger, Francis Edward Roberts, Hubert Smith Roberts, Junius Ray Roberts, Lewis Woodrow Roberts, Oscar Leon Roberts, Wesley Philip Roberts, Oscar Davis Roof, George Pinkney Schwartz, Jr., Jacob Wallace Schwartz, Madison Goode Sarratt, Rudolph Sharpe, Lucy Raynell Son, Claude Clifton Son, John Alvin Sox, Thomas Lem Sox, Ernest Albert Sox, Thomas Pickney Steele, Albert T. Taylor, Jr., Harry David Wesinger.

Those who were in the Service of the American Red Cross during World War II:

Annie Eugenia Mitchell Bolline, Marshall Phyllis Mitchell, Edward Kellers Mitchell, Sr.

Mrs. Fannie Von Bora Smithdeal Roof was born in Statesville, North Carolina, on March 14, 1867, the daughter of the Reverend John Lewis Smithdeal and Susan Elizabeth Hendrix Smithdeal.

"Mrs. Fannie", as she was lovingly known to her many friends and family, was married to Elyard Belton Roof on February 19, 1885.

The young couple moved from Columbia to Lexington in 1887, and promptly joined Saint Stephens Lutheran Church. There, they worked, worshipped and reared a family of six children.

Mrs. Fannie was from a long line of musicians. As soon as she arrived in Lexington, Mrs. Alma Geiger's Mother approached her about teaching Miss Alma music. Thus she began her teaching of this art in Lexington. It has been said that more children had been given an appreciation of music in our town than in any other one its size in the State, and have named "Mrs. Fannie", "the Mother" of Music in this area.

In 1888 the Church Council approached Mrs. Fannie about becoming organist at Saint Stephens, where she had served as substitute for Mrs. Alice Meetze Butler many times. After much consideration, she began and held this position from 1888 to 1937. She lacked only a few months of serving 50 years.

She was often asked by members of the Council about a salary for her work. But her answer remained the same: "If I use my talents all week to help with the family budget, my part in the work of my Church is my privilege and my opportunity to serve my Lord."

Not only did she train the Junior and Senior Choirs, but she taught a Sunday School Class while "Mr. Belton" acted for many years as Superintendent of the School and was a member of the Church Council.

When Dr. Obenschain came, he started a fund to buy the Church's first pipe organ. The choir was moved from the front of the Church to the loft in back.

Up to this time, Mrs. Fannie had pumped and played the little reed organ. There was a little chair that sat by the organ stool for her to use during the services. When it was no longer needed, she asked the council if she may have it. Her wish was granted, and this little chair became one of her most prized possessions.

Once while Mrs. Fannie was called aside "to rest a while", (as she called a little upset with her heart), Dr. Obenschain came to visit her. As he stood at the foot of her bed, she looked up and asked what he was thinking. His answer was, "I was thinking 'blessed are the peacemakers'."

I feel that the theme of Mrs. Fannie's life was faith, joy, peace, service, and love for all man kind, and that her memory is a challenge to all who knew and loved her.

SERVICES  
*of*  
DEDICATION



*The New*  
*St. Stephen's Lutheran Church*  
*Lexington, South Carolina*

*Sunday, March 23, 1958*

THE REV. RALPH I. LUMAN, Pastor





## DEDICATION SERVICE

Sunday, March 23, 1958

11:15 A.M.

### PASSION SUNDAY

(Procession will consist of Ministers, Bearers of Holy Bible and Sacramental Vessels, Junior Choir, Senior Choir. Congregation will stand.)

Pastor: In the Name of the Father, and of the Son, and of the Holy Ghost.  
Congregation: Amen.

Psalm 24 (To be read responsively.)

The earth is the Lord's and the fulness thereof: the world, and they that dwell therein.

For He hath founded it upon the seas: and established it upon the floods.

Who shall ascend into the hill of the Lord: or who shall stand in His Holy place?

He that hath clean hands and a pure heart: who hath not lifted up his soul unto vanity, nor sworn deceitfully.

He shall receive the blessing from the Lord: and righteousness from the God of his salvation.

This is the generation of them that seek Him: that seek Thy face, O Jacob.

Lift up your heads, O ye gates, and be ye lift up, ye everlasting doors: and the King of glory shall come in.

Who is this King of glory: The Lord of Hosts, He is the King of glory.

Glory be to the Father, and to the Son, and to the Holy Ghost: As it was in the beginning, is now, and ever shall be, world without end. Amen.

Presentation of the keys of the church by the Building Committee Chairman, Mr. C. E. Black, to the Pastor

Pastor: Peace be to this House.

Congregation: And to all that enter therein.

Congregation remains standing. Ministers place the Holy Bible and Sacramental Vessels. The lighting of the candles.

Psalm 122 (To be read responsively.)

I was glad when they said unto me: Let us go into the house of the Lord.

Our feet shall stand within thy gates: O Jerusalem.

Jerusalem is builded: as a city that is compact together;

Whither the tribes go up, the tribes of the Lord: unto the testimony of

Israel, to give thanks unto the Name of the Lord.

For there are set thrones of judgment: the thrones of the house of David.

Pray for the peace of Jerusalem: they shall prosper that love thee.

Peace be within thy walls: and prosperity within thy palaces.

For my brethren and companions' sakes: I will now say, Peace be within thee.

Because of the house of the Lord our God: I will seek thy good.

The Gloria Patri (To be sung by congregation.)

Pastor proceeding to the altar says:

I will go unto the altar of God, unto God my exceeding joy. O send out Thy Light and Thy Truth: let them lead me; let them bring me unto Thy holy hill, and to Thy tabernacles, that I may go unto the altar of God, unto God my exceeding joy, and praise Thee, O God, my God.

Hymn—"Holy, Holy, Holy."

158 (108 P.S.H.)

Scripture Lessons

I Kings 8:12-30; I Cor. 3:9-17.

Dedication Prayer

## Act of Dedication

I do now set apart this St. Stephen's Evangelical Lutheran Church as a House of God; and dedicate it to the glory and honor of Almighty God, and to the service of His Holy Church: In the Name of the Father, and of the Son, and of the Holy Ghost. Amen.

The Congregation shall sing: Amen. Amen. Amen.

The Introit Page 87

The Gloria Patri (Congregation and Choirs)

The Kyrie Page 9

The Gloria in Excelsis Page 9

The Collect Page 87

The Epistle: Hebrew 9:11-15 Page 87

The Sentence For Lent Page 11

The Gospel: John 8:46-59 Page 88

The Nicene Creed Page 11

Greetings: The Rev. Karl W. Kinard, D.D., President  
Evangelical Lutheran Synod of South Carolina

Hymn: "Holy Ghost, With Light Divine." Page 156 (103 P.S.H.)

The Sermon: "Do You Know You Are God's Temple?" Pastor Luman

The Offertory and Offering (Undesignated contributions will go to Building Fund.)

Anthem: "Great and Marvelous Are Thy Works."

The General Prayer and Lord's Prayer

Hymn: "A Mighty Fortress" Page 195 (134 P.S.H.)

Silent Prayer

Postlude



## *A Warm Welcome . . .*

A warm welcome is extended to all our friends worshipping with us today. We invite you to return at any time. Services are held each Sunday at 11:15 A.M., with Sunday Church School convening at 10:00 A.M.

The flowers were placed on the altar to the glory of God by Mr. and Mrs. W. E. DeLoach, Sr., and Mrs. Bess Rawl.

## DEDICATION OF MEMORIALS AND ORGAN RECITAL

Sunday, March 23, 1958

4:00 P.M.

Quiet Music for Meditation

Bible Poems

Jaromir Weinberger

1. Abide with Us

2. The Last Supper

Prelude: "Overture"

G. F. Handel

Hymn: "Praise to the Lord, the Almighty"

Page 286 (248 P.S.H.)

Invocation

Psalm 98

Page 311 (41 P.S.H.)

Gloria Patri

Organ Recital: Part I

John Morton, F.A.G.O., Organist

Toccata and Fugue in D Minor

J. S. Bach

Chorale: "O Sacred Head, Surrounded"

Dedication of Memorials and Gifts (Congregation will rise.)

Pastor: Our help is in the Name of the Lord:

Congregation: Who made heaven and earth.

God is not unrighteous to forget your work and labor of love, which He hath showed toward His Name.

To do good and to communicate forget not; for with such sacrifices God is well pleased.

O worship the Lord in the beauty of holiness:

I will offer unto Thee the sacrifices of thanksgiving and will call upon the Name of the Lord.

How beautiful are the feet of them that preach the gospel of peace:  
And bring glad tidings of good things.

Praise ye the Lord. Praise God in His sanctuary: praise Him in the firmament of His power.

Praise Him for His mighty acts: praise Him according to His excellent greatness.

Praise Him with the sound of the trumpet: praise Him with the psaltery and harp.

Praise Him with the timbrel and dance: praise Him with stringed instruments and organs.

Glory be to the Father, and to the Son, and to the Holy Ghost:

As it was in the beginning, is now and ever shall be, world without end.  
Amen.

The Lord be with you.

And with thy spirit.

Let us pray.

O Lord God, Who hast commanded every man to offer unto Thee of Thine own gifts according to the purpose of his heart, and Who dost abundantly requite them from Thine eternal bounty: Be pleased to accept, we beseech Thee, these offerings now made unto Thee by Thy servants, and grant that they may be used unto Thy glory, through Jesus Christ, our Lord.  
Amen.

O God, by Whose Word all things are sanctified: Pour out Thy benediction upon these gifts, that whoever shall use them according to Thy purpose and will in thanksgiving unto Thee, may glorify Thy Holy Name; through Jesus Christ, Thy Son, our Lord. Amen.

Organ Recital: Part II

Paraphrase on "Ein Feste Burg"

Homer Whitford

Two Chorale Preludes

Richard Purvis

1. Poeme Mystique (Manna)

2. Canzona (Liebster Jesu)

Hymn: "Angel Voices Ever Singing"

Page 240 (171 P.S.H.)

Greetings: The Rev. Guy Cruse, President, Western Conference

Organ Recital: Part III

Byzantine Sketches

Henri Mulet

1. In Paradisum

2. Toccata on "Thou art the Rock"

The Offering

(Undesignated offerings will go to the Building Fund.)

Prayer

Organ Recital: Part IV

Improvisation

S. Karg-Elert

Hymn: "Now Thank we all our God"

Page 283 (242 P.S.H.)

Benediction

Silent Prayer

Postlude

Toccata from Symphony V

Charles M. Widor



Our organist is John Morton, F.A.G.O., Organist and Director of Music at Riverside Avenue Christian Church, Jacksonville, Florida. He has designed the specifications of a new three manual 34 rank Pels Organ to be installed in Riverside Church in the near future. He has studied at the Juilliard School of Music in New York City and also studied under teachers such as Gaston Dethier, Ernest Mitchell and Virgil Fox. It is a pleasure to have him with us today.

## FACTS ABOUT ST. STEPHEN'S

The congregation was organized in 1830 and has worshipped in three buildings previous to the present new structure. These are depicted in the stained glass window in the tower entrance.

Ground was broken for the new church on February 3, 1957, and the cornerstone was laid September 15, 1957.

St. Stephen's has been served by a number of dedicated men during the years including Revs. Ernest L. Hazelius, D.D., William Berly, Michael Rauch, George Haltiwanger, Jr., David Bernhard, C. B. Thummel, John C. Hope, J. F. M. Lippard, Lewis Eichelberger, D.D., James H. Baily, J. Q. Wertz, M. O. J. Kreps, S. S. Rahn, J. G. Graichen, J. W. Hiller, T. S. Brown, L. A. Thomas, W. H. Riser, A. B. Obenschain, D.D., (to whose memory the congregation has dedicated the beautiful window over the altar), Vernon F. Frazier and Ralph I. Luman, who assumed the pastorate of St. Stephen's June 1, 1956.

The nave of the new church will seat about 440 people with a balcony capable of seating 160.

The picture windows tell the story of redemption through two Old Testament scenes followed by the life of Jesus and ending with St. Stephen, the first man to die a martyr's death for his faith and then Martin Luther, the reformer who cleansed the church of corruption and allowed Jesus Christ to assume His rightful place as Head of the Church.

The carved symbols on the wood paneling in the rear of the church depict the twelve disciples. Reading from left to right—Philip, Bartholomew, Thomas, Matthew, Peter, John, Andrew, James, Jude, James the Less, Simon, Judas. (These were carved by the chairman of the Building Committee, Mr. C. E. Black.)



Architect: Jesse W. Wessinger; Contractor: Crossland-Roof Construction Co.; Cooling and Heating: Columbia Cooling and Heating Co.; Windows: Russell—Church Studios; Organ: Pels; Furniture (Church): Page Church Furniture Co.; Furniture (Parish Building): American Seating Company; Carpet: Hamm and Wise Furniture Co.



# GIFTS AND MEMORIALS

*To the Glory of God*

## WINDOWS

### GIFT

Rose Window  
I am the Alpha and the Omega  
You are the light of the world  
The Annunciation  
The Temptation of Jesus  
Jairus' Daughter Raised  
Peter Recognizes The Christ

The Transfiguration

The Good Shepherd

Knocking at the Door  
Sketches of Old St. Stephen's  
Churches

Cleansing the Temple

Christ in Gethsemane  
The Crucifixion

Ascension

### DONOR

St. Stephen's Congregation  
Mrs. J. H. Mathias  
Mr. and Mrs. B. B. Oswald  
The Children  
Mrs. P. H. Shealy and daughter, Grace  
Miss Ethel A. Dreher  
Mrs. R. H. Caughman, Sr.,  
H. M. Caughman, Wise Caughman,  
R. H. Caughman, Jr.  
Mrs. R. H. Caughman, Sr.,  
H. M. Caughman, Wise Caughman,  
R. H. Caughman, Jr.  
Jeanette R. Swygert

Mrs. J. Alfred Sease  
Mrs. Myrtice Taylor, Miss Juliene  
Taylor, Miss Martha Janice Taylor,  
Mr. and Mrs. Michael Harman,  
Mr. and Mrs. Frank T. Roddey,  
Mr. and Mrs. Brooks T. Bennett  
Rev. and Mrs. Ralph I. Luman

Mrs. Lessie O. Caughman  
Mr. and Mrs. Ray Bouknight,  
Mr. and Mrs. Edward N. Wingard,  
Mr. W. Reed Corley,  
Mr. Harry W. Corley  
Dr. and Mrs. Claude C. Harmon,  
Mr. and Mrs. Charles Hamilton Boyd,  
Mr. and Mrs. Whitfield George Ramsey

### IN MEMORY OF

Dr. A. B. Obenschain  
Mr. and Mrs. W. W. Barre  
Mrs. Mary C. Wingard  
Mr. and Mrs. J. S. Caughman, Sr.  
Dr. P. H. Shealy, D.D.S.  
Mr. and Mrs. Edwin James Dreher  
R. H. Caughman, Sr. and  
D. C. Caughman

R. H. Caughman, Sr. and  
D. C. Caughman

Mr. Eugene S. Roberts and in honor  
of Annice B. Roberts  
Mr. and Mrs. J. H. Price  
Mr. Julian M. Taylor

Mr. and Mrs. Philip Wellington Odom,  
Mrs. Simon Luman and in honor of  
Mr. Simon Luman  
Mr. Henry Moses Caughman  
Mr. and Mrs. Harry G. Corley

Mr. and Mrs. Thomas Lee Harmon

## WINDOWS

### GIFT

Symbol of Trinity  
(over side narthex entrance doors)

Narthex Screen Panel D

Narthex Screen Panel E  
Two Tower Entrance Door Lights  
Two Doors—Entrance to Parish  
Bldg.

Two Doors—Entrance to Narthex  
Right

Two Door Lights—Chancel Doors  
Narthex Screen Panels C and F

The Law Is Given

The Baptism of Jesus

Sermon on the Mount

Triumphal Entry

The Last Supper  
The Resurrection

### DONOR

Mrs. Mary Ellen Haltiwanger,  
Mrs. Eleanor C. Little,  
Mrs. Bertha C. Smith,  
Mr. John Simon Caughman, Jr.  
Mrs. Bessie Kyzer, wife and mother  
and her family.

Mr. and Mrs. Claude C. Sons  
Mrs. Jesse M. Roof, Sr.  
Mr. and Mrs. Leon M. Lowman

Mrs. Joe D. Sox

Mrs. A. S. Freeland  
Dr. W. E. Caughman

Mr. and Mrs. W. Crosson Sease

Dr. and Mrs. James M. Austin

Mr. and Mrs. L. B. Addy, Sr.

Mr. and Mrs. A. J. Mathias, Jr., and  
Marlene Mathias  
Mr. and Mrs. Cecil Elkins and Sylvia  
Mr. and Mrs. Leland Amick and R. W.  
Mr. and Mrs. LaBorde Mathias and  
children (Lynn, LaBorde, Jr., George  
and Tommie)

Mr. and Mrs. George E. Vickers

The Children  
Miss Pauline Mittle,  
Mrs. M. H. Haltiwanger,  
Miss Mary James Haltiwanger,  
Mrs. Bessie Kyzer and family,  
Mr. and Mrs. Rice B. Harmon,  
Mr. R. B. Harmon

### IN MEMORY OF

Dan Caughman

Benjamin Keitt Kyzer  
William Berly Kyzer  
Their parents  
Mr. Jesse Marion Roof, Sr.  
Mr. and Mrs. Levy P. Lowman

Mr. Joseph D. Sox

Mr. and Mrs. C. V. Bouknight  
Mr. and Mrs. J. B. O. Caughman

### IN HONOR OF

Rev. and Mrs. Ralph I. Luman,  
Paul Martin Luman and Mary Elisabeth  
Luman

Mary Josephine, Louise Pettit and  
Jame Monroe Austin, III  
Keith L. Addy, L. B. Addy, Jr.,  
Lindsey Addy, Mrs. Marjorie Lindler and  
Mrs. Frances Price

Mr. and Mrs. A. J. Mathias, Sr.

Mrs. Lessie O. Caughman  
Rev. Vernon F. Frazier

## WINDOWS

### GIFT

The Birth of Jesus

The Promise of the Saviour

Pentecost

St. Stephen—First Christian Martyr

Martin Luther—Christian Reformer

Symbol of St. Stephen

(Nave entrance door)

Symbol of Luther Ross

(Nave entrance door)

Narthex Screen Panels A, B

Narthex Screen Panels, G, H

### DONOR

Mr. and Mrs. John K. Addy, Sr.

Mr. and Mrs. John H. Hite, Jr.

Mr. and Mrs. Charles H. Barrett

Mr. and Mrs. W. W. Lorick, Sr.,

Mr. and Mrs. W. B. Redd, Jr.,

Mr. and Mrs. W. W. Lorick, Jr.,

Mr. and Mrs. D. A. Lorick

Mr. and Mrs. W. W. Lorick, Sr.,

Mr. and Mrs. W. B. Redd, Jr.,

Mr. and Mrs. W. W. Lorick, Jr.,

Mr. and Mrs. D. A. Lorick

Jacob E. Kaminer

Jacob E. Kaminer

Mr. and Mrs. Otto Reenstjerna

Mr. and Mrs. C. E. Black

Mr. and Mrs. F. U. Black

Mr. and Mrs. Harold Harmon.

### IN HONOR OF

John Kermit Addy, Jr., and

Timothy Franklin Addy

Mr. and Mrs. L. E. Wingard, Sr.

## FURNISHINGS

### GIFT

Altar

Suspended Gold Altar Cross

Lectern and Paneling

Communion Rail

Credence Shelf

Nave Pews

Altar Fair Linen

Offering Plates

Candelabra and Flower Vases

Narthex Shelf

### DONOR

J. E. Kaufmann,

C. A. Kaufmann

Mrs. W. F. Risinger

Mr. and Mrs. E. Ross Kaminer

Dr. and Mrs. J. S. Liverman

Mrs. J. A. Harman

James F. Dreher

Mrs. Bruce Caughman McLean

Their Family

Mrs. Murray Wessinger and

David Wessinger

Mr. and Mrs. James M. Lowman and

Mr. and Mrs. Robert W. Lowman

### IN MEMORY OF

Mrs. Addie Kaminer Kaufmann

Mr. W. Frank Risinger

Mr. W. O. Kaminer, Sr.

Mr. and Mrs. J. T. Liverman, and in

honor of Mr. and Mrs. C. A. Wingard

Mr. J. Arthur Harman

Mr. and Mrs. Edwin G. Dreher and in

honor of Miss Ethel Dreher

Mr. Q. Lever Caughman

Mr. and Mrs. Q. E. Caughman

Mr. Harry David Wessinger

Mr. and Mrs. Levy P. Lowman

## FURNISHINGS

### GIFT

Dossal Cloth (Red)  
 Acolyte Stool  
 Main Entrance Lantern  
  
 Missal Stand  
 Two Pulpit Chairs  
  
 Visitor's Register Book  
 Oboe Stop for Organ  
  
 Pulpit and Paneling  
  
 Baptismal Font  
 Cushion for Communion Rail  
 Two Hymn Boards  
 Carpet for Chancel  
 Carpet for Nave of Church  
 Tower Cross  
 Shields of 12 Disciples  
 Violet Paraments  
 Book of Remembrance  
 Main Entrance Lantern  
 Piano  
 Piano  
 Piano  
 Piano  
 Piano  
 Piano

### DONOR

Mr. and Mrs. E. K. Mitchell, Sr.  
 and children  
 Janette, Stanette and  
 Lula Kathryn Liverman  
 Sidney and Emily Riley  
  
 Dr. W. E. Caughman  
  
 Mr. and Mrs. R. F. Sharpe  
  
 Mr. and Mrs. W. W. Lorick, Jr.  
 The Choir of St. Stephen's and  
 interested friends  
 United Lutheran Church Women  
 St. Stephen's Lutheran Church  
 Loyal Sunday School Class  
 Mr. T. R. Keisler  
 Mr. and Mrs. Carl Lewis  
 Ladies' Bible Class  
 Sunday School  
 Mr. and Mrs. R. Milo Smith  
 Mr. C. E. Black  
 Ladies' Bible Class  
 Mr. and Mrs. Henry Fulmer  
 Mr. and Mrs. Cyrus L. Shealy, Sr.  
 Mrs. Suedella Oswald  
 Mrs. Hamlin Shull  
 Mrs. Annice Roberts  
 Mrs. Paul Ray Barr  
 Mrs. Quincy Wingard  
 Mrs. Robert E. Cook, Sr.

### IN HONOR OF

Mr. and Mrs. John J. Taylor  
  
 Mr. and Mrs. A. M. Wingard  
  
 Mr. and Mrs. Simon P. Wingard,  
 Grandparents  
 Miss Mary Wingard, Aunt,  
 Mrs. Suedella W. Oswald, Mother  
 Mr. and Mrs. Franklin Calhoun  
 Caughman  
 Robin Susanne Sharpe,  
 Stephen Rhett Sharpe and  
 Julian Franklin Sharpe  
 William Blake Lorick  
 Miss May Boozer



# St. Stephen's Evangelical Lutheran Church

## Lexington, South Carolina

Rev. Ralph I. Luman.....Pastor  
Miss May Boozer.....Organist-Choirmaster  
Mrs. Otto Reenstjerna.....Junior Choir Director

### CHURCH COUNCIL

Addy, John Kermit, Sr.....Current Treasurer  
Bennett, Brooks T.....Secretary  
Black, F. U.  
Caughman, M. Wise.....Vice Chairman  
Cook, Robert E.  
Harman, H. Odelle  
Harmon, Dr. Claude C.  
Hiller, Fred, Jr.  
Hite, J. Harry  
Lorick, W. W., Sr.  
Lowman, James M.....Benevolence Treasurer  
Roberts, Hubert S.

### LEADERS OF ORGANIZATIONS

W. Reed Corley.....Superintendent, Sunday School  
Mrs. H. Odelle Harman.....President, United Lutheran Church Women  
Mr. L. E. Wingard, Jr.....President, United Lutheran Church Men  
Miss Maxine Wingard.....President, Luther League  
Mrs. Walter Powell.....Superintendent, Week Day Church School  
Mrs. Lewis W. Roberts.....Children's Secretary

### BUILDING COMMITTEE

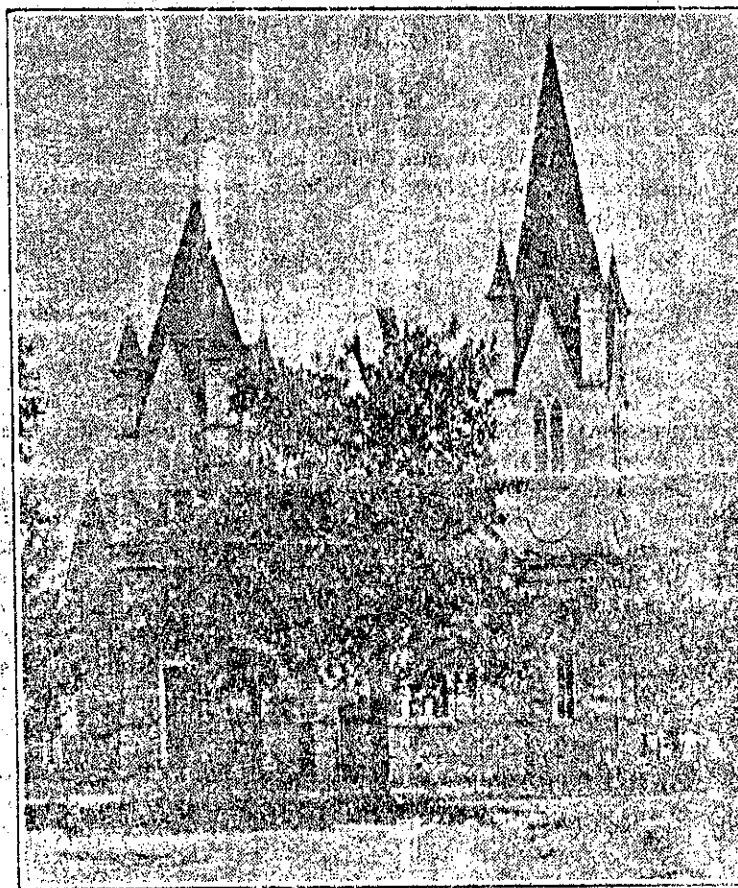
Mr. C. E. Black, Chairman  
Mrs. Ernestine Mathias  
Mr. W. W. Lorick, Sr.  
Mr. E. K. Mitchell, Sr.  
Rev. Vernon F. Frazier succeeded by  
Rev. Ralph I. Luman

## Church Directory

Pastor.....Rev. A. B. Obenschain, D. D.  
 Council.....J. W. Ballentine, E. H. Barre, Geo. D. Roof, W. W. Lorick,  
 H. D. Wessinger, R. F. Roberts, R. E. Cook, H. C. Oswald  
 Organist.....Mrs. E. B. Roof  
 Superintendent Sunday School.....B. H. Barre  
 Assistant Superintendent.....Dr. P. H. Shealy  
 Secretary-Treasurer.....L. B. Adly  
 Organist.....Miss May Rooser  
 Women's Home and Foreign Missionary Society....Mrs. B. H. Barre, Pres.  
 Ladies' Aid Society.....Mrs. J. S. Caughman, President  
 Luther League.....Mrs. J. D. Carroll, President  
 Light Brigade.....Mrs. A. B. Obenschain, Leader  
 Hundredth Anniversary Committee...Miss Mary Wingard, Mrs. E. B. Roof,  
 Mrs. Minnie W. Meetze, Mrs. J. A. Barre, Mrs. J. D. Carroll,  
 Miss May Rooser, Prof. J. W. Ballentine, Mr. E. H. Barre,  
 Dr. P. H. Shealy

## PROGRAM Centennial Celebration

St. Stephen's Evangelical Lutheran Church



1830-1930

Rev. A. B. Obenschain, D. D., Pastor  
Lexington, S. C.

Aug. 27, 28, 29 & 31 - 1930

## Foreword

It is with hearts filled with gratitude and with thanksgiving upon our lips that we now pause at the end of one hundred years of the life of St. Stephen's Evangelical Lutheran Church and review the history that she has as a congregation been permitted to make under God's guiding hand and protecting care.

It was some time, we are lead to believe, in the year 1830, that a small band of Lutherans determined upon establishing a church in Lexington village. It was in that year, as we learn from the Minutes of Synod, that a house of worship was erected. Many trials and discouragements has been hers since that year, but many accomplishments and joys has also been hers in these hundred years. For God has richly blessed her. For what she has done we must give all the credit to Him. These hundred years would otherwise have been unfruitful. While we may take some pride in what others and we also have been privileged to accomplish for God's Kingdom, let us not forget that in having a rich heritage we have it mainly because of what others have done and they only as God blessed them; and that it becomes our duty and privilege in commencing to make the history of the beginning of the second hundred years to hold fast the truth and in the faith of our fathers to go on to greater things for our Church and our God. May the Spirit move us so to see and give us the strength so to do; and then our reviewing of the onward march of the past hundred years will not have been made in vain. Amen.

Arthur B. Obenschain, Pastor

Wednesday Evening, August 27, 8:30

## High School Auditorium

Doxology

Invocation

Community Singing:

Hymns: 245....."Oh! Worship the King"

216....."How Firm a Foundation"

139....."Faith of Our Fathers"

Address of Welcome.....Rev. A. B. Obenschain, D. D.

Greetings.....Rev. W. J. Bradley and Rev. J. W. Lewis

Anthem....."How Lovely Are Thy Dwellings," (Wolcott)

Address.....Dr. James C. Kinard

Hymn: 208....."Lord Dismiss Us With Thy Blessings"

Announcements

Thursday Evening, August 28, 8:30

St. Stephens Church

Women's Chorus....."I Waited For The Lord," (Mendelssohn)

Vespers

Address.....Rev. Chas. J. Shealy, D. D.

Address.....Mrs. M. O. J. Kreps

Duet....."Open The Gates of The Temple," (Knapp)

Mrs. J. A. Barre and Mrs. J. D. Carroll

Address.....Dr. A. G. Voight

Hymn: 244....."Oh! Zion Haste"

Benediction

A Historical Pageant

of

St. Stephens Lutheran Church

Presented on

The One Hundredth Anniversary

Friday Evening

August the Twenty-Ninth

Eight-Thirty o'clock

1930



# The Pageant

## PART I

### THE GIFT OF GOD

Scene 1. Meeting of the Shepherds.

Scene 2. The arrival of the Shepherds and the Wise Men at the Manger.

## PART II

### THE GIFT OF MEN

#### Prologue

Civilization comes to her throne followed by her attendants, with The Spirit of Progress and her Heralds, who unfold before Civilization the History of St. Stephen's Lutheran Church.

#### Episode One

The Spirits of Love, Generosity, and Loyalty present their gifts.

#### Episode Two

The four living Disciples with the Spirit of Missions and the Spirit of Youth bring their offering to the Manger.

#### Episode Three

The Spirit of Education offers its talents.

#### Epilogue

The Spirit of Service comes with her message.

#### Tableau

A Song of Victory.

# Cast

## IN THE ORDER OF THEIR APPEARANCE

### PART I

#### SCENE ONE:

First Shepherd.....Verner Bickley  
Young Shepherd.....Wise Caughman  
Other Shepherds.....H. C. Oswald, J. E. Kaminer, George Schwartz

#### SCENE TWO:

Mary.....Allen Oswald  
The Wise Men.....J. W. Ballentine, J. A. Barre, B. H. Barre

### PART II

#### Prologue

First Herald.....Carl Davis Caughman  
Civilization.....Evelyn Caughman  
Attendants.....Irma Roberts, Mrs. Maxie Wingard  
The Spirit of Progress.....Christine Roof  
Heralds.....Margaret Wingard, Sarah Hampton Kaminer

#### Episode One

The Spirit of Love.....Helen Obenschain  
The Spirit of Generosity.....Sudell Shealy  
The Spirit of Loyalty.....John Simon Caughman  
The History of the Ladies' Aid Society.....Mrs. E. B. Roof

#### Episode Two

The Disciples.....Rev. A. B. Obenschain, Rev. L. A. Thomas  
Rev. T. S. Brown, Rev. W. H. Hiller  
The Spirit of Missions.....Miss Mary Wingard  
Home Missions.....Mrs. E. K. Mitchell  
Inner Missions.....Annie Lou Taylor

#### Foreign Missions:

Japan.....Bertha Sue Berley  
China.....Mrs. L. B. Addy  
Africa.....Mrs. H. D. Wessinger  
India.....Mrs. P. H. Shealy  
The West Indies.....Mrs. W. W. Lorick  
The Spirit of Youth.....Sarah Dreher  
Attendants.....Augustine Sox, Laura Roberts

## Episode Three

The Spirit of Education.....Henry Jake Bickley  
 Attendants.....Lewis Roberts, Volight Hendrix  
 Children of the Sunday School.....Evelyn Kyzer, Nell Sons, Olga Mack,  
 Margorie Harmon, Juanita Roof, A. T. Taylor, Edward Moors

## Epilogue

The Spirit of Service.....Martha Elizabeth Barre

## Tableau

## Ensemble

## CHORUS

## Soprano:

Mrs. S. P. Roof  
 Mrs. T. R. Keisler  
 Mrs. J. A. Barre  
 Miss May Boozer

## Tenor:

Lewis B. Roof  
 B. J. Wingard

## Alto:

Mrs. K. F. Oswald  
 Miss Mary Sue Roof

## Bass:

C. L. Shealy

..Pianist—Miss Veda Barre

Director—Mrs. John D. Carroll

The Pageant Committee wish to extend thanks to our Pastor, Miss Ethel Dreher, Mr. W. P. Roof, Dr. C. M. Efrd, Mrs. Jas. E. Hendrix, Mrs. Rachel Taylor, Mr. Paul Corley and Mr. Godfrey Harman for the records and assistance rendered in securing historical material for this pageant. Also to those members of the congregation and community who have kindly assisted with the presentation.

Mrs. J. A. Barre,  
 Miss May Boozer,  
 Mrs. Jno. D. Carroll.

Sunday Morning, August 31

Sunday School Hour 10:15

Hymn: 184....."Beautiful Savior"

Opening Service

Chorus....."Lift Up Your Heads"—Junior Choir

Address....."Interpretation of Baptism in Terms, Life Today"

Rev. W. H. Hiller

Hymn: 183....."When He Cometh"

Lord's Prayer

Sunday Morning, August 31, 11:15

## Divine Services

Anthem....."Judge Me Oh! God," (Neidlinger)

Hymn: 286

The Service

Quartet....."Thy Life Was Given For Me," (Brackett)

Messrs. C. L. Shealy and L. B. Roof

Miss May Boozer, Mrs. J. D. Carroll

Hymn: 199

Sermon.....Rev. L. A. Thomas, D. D.

Offeratory....."First Nocturne," (Chopin)

Miss Mary Sue Roof

Hymn: 197

Benediction

Doxology

Posteude — Marche — Celebre

Sunday Evening, August 31, 8:30

## Evening Services

Organ Prelude.....Andante in G "The Pilgrims Song of Hope"

Miss Veda Barre

Hymn: 198

Vespers

Solo....."Repentance," (Gounod)

Miss Christine Roof

Hymn: 204

Sermon.....Rev. T. S. Brown

Offeratory....."Great in the Lord," (Boex)—Choir

Hymn: 437

Closing Services

Posteude — Athalie — Mendelssohn