



St. Mary's Lutheran Church
2001 80th Street, Kenosha, WI 53143
info@stmaryslutheran.org (262)658-3555
www.stmaryslutheran.org

March 4 & 5, 2023
The Season of Lent—Week 2



The funeral of Jane Sandberg is this Sunday, March 5th at 1:00pm here at St. Mary's with Pastor Kathy Brown celebrating the life of one of God's beloveds. (Kenosha Funeral Services is handling the arrangements. See the [Obituary](#)).

EASTER MEMORIALS—

DEADLINE IS THIS

SUNDAY! \$13.00 per 6"

potted assorted plants. Cash/Check. Plants will be picked up after the 9:00am Easter Sunday service.



MIDWEEK LENTEN SERIES, 2023: **"MAKING CHANGE"**

MARCH 8 @ 6:30PM IN SANCTUARY
Week of Lent 2: Change of Heart—Pastor Cindy Aasen, Pastor at St. Paul's Lutheran Church & Julie Schmit, Holden Leader.

"Jesus' words to the Pharisees give us pause: "You honor me with your lips, but your hearts are far from me." Jesus invites us to experience a change of heart that will in fact change every part of our lives.



SOUPS ON - we will be having soup suppers preceding our Lenten services each week. A free will offering will be taken with all

proceeds going to the youth program. We will start serving at 5:30pm and end at 6:20pm.

Youth News—Have Fun at Winter Xtreme at Camp Timber-Lee this Weekend! : Good Friday Rehearsals on Sunday Nights in the Sanctuary at 6:00pm-7:30pm.

Fish /Fusion are both a Learning Night this Monday! Meet downstairs in the Youth Room.



ST. MARY'S IS A RECONCILING IN CHRIST CHURCH, 2018

St. Mary's Lutheran Church is a Reconciling in Christ congregation. We welcome into our full life and ministry people of any sexual orientation, gender identity, age, occupation, ability, nationality and race.



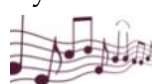
SUNDAY SCHOOL—Sundays during Worship! Come up for Kids Connection!



Something to Ponder...

"A leap of faith...How many of us would take God's word and travel where He says? Each day this week, share with a loved one how God has given you direction."

Next Week is Holden Evening Prayer on Saturday night, 5pm worship and Contemporary Style Worship on Sunday morning, 9am.



"Come and listen

Come to the water's edge



All you who are thirsty come.

*Let me tell you what He has done for me
He has done for you He has done for us."*

"Come and Listen"—DAVID CROWDER



????????????????????????????????

MET SURVEY QUESTIONS—WEEK 1

The Mission Exploration Team (MET) is excited to have your input as we begin the process of collecting information to call a new pastor for St. Mary's. Over the next four (4) weeks, you will have the opportunity to share your thoughts by answering a few questions. Completed surveys need to be returned to the church office in person, by mail, or electronically by the end of the day on each Wednesday following that week's group of questions. **Week 1 is due Wednesday, March 8th.** If you prefer to do this online, surveys are available on our website. Click [HERE](#).

Thank you for your attention to this! Any questions, you can contact Pat Gallo pgallowi@att.net or 652-2911 or Sue VanBendegom 652-1770 or svanbendegom@gmail.com

