

The monthly Newsletter of:

March 2023

Agnus Dei Lutheran Church

Gather in Grace

Grow in Faith

Go in Service



Evangelical Lutheran
Church in America
God's work. Our hands.



The congregation of Agnus Dei Lutheran Church celebrates the amazing diversity of God's beloved children. We welcome all, regardless of age, ethnicity, abilities, faith background, race, family configuration, socioeconomic status, sexual orientation, gender identity or expression. We enthusiastically invite you into this worshipping congregation as we strive to share God's inclusive love with everyone in our community and in our world.

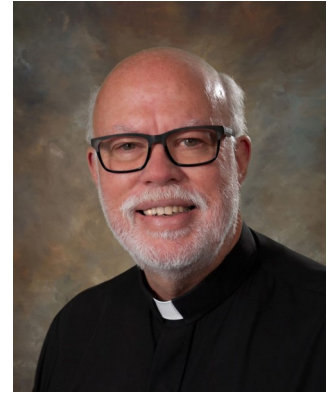


Pastor's Message

FIVE WORDS

There are five words—phrases actually—always to say and be said, and always to have at the ready whenever they may be appropriate. They are:

I'm sorry. Please forgive me.
I forgive you.
Thank you.
I love you.
Goodbye.



Pastor Duane Fister

The first two are appropriate for keeping short accounts with others. They respond to a strain or break in a relationship. For an even faster check-in you can ask, "Are we good?" Your friend will answer, "Yes, we're good." If your friend answers differently, then the two of you have something important to talk about. The Holy Spirit ever vies for harmony and joy to flow among our mutual relationships.

"I love you" and "Thank you" are always appropriate. They are my message for you in this last newsletter article I will write.

Thank you. It has been a privilege to be your interim pastor for these three months. You are by far the healthiest congregation I've served with many spiritual riches here at Agnus Dei—meaning you, its people, are the spiritual riches: qualified leadership; integrity; financial solvency; gifted individuals, "comfortable in your own skin"; wholehearted, joy-filled service; loving conduct; unity, solidarity and commitment, and no signs of out-of-the-ordinary stress, hidden disagreements, or potential burn-out. I am so very thankful for you, and you have much to be thankful for.

Early on one or two of your leaders asked me my goal for the interim ministry. I answered I wanted to leave the campsite better than I found it. I think the campsite was great to begin with. It's even better now, and I had little to do with it. All that was you, because you had everything to do with it. So thank you.

I love you. I want to say, "I love you, too," because from the very first I have felt your love and acceptance of me, so my love is a response back. When a congregation receives a newly called pastor, that clergy person has one thing to accomplish the first year: to acclimate to the new setting and its people. For an interim, that is not the case. An interim hits the ground running with the expectation that he or she will seamlessly fill the duties of the called pastor without so much as a lull. Hence from the get-go I sought involvement: a presence at every church activity and committee meeting. Your love welcomed me in and afforded me encouragement to love you back. Thank you for that; and like I said, "I love you, too."

Goodbye. Well, not yet; we have a month to go, and there is more work to be done, including a bunny reveal. My last Sunday, March 26, will be "stuffy Sunday," and I desire all grandparents, parents and children to bring your stuffed animals to church. (Come on, you parents and grandparents, I know you still have "stiffies" you keep from your childhood, and I want to meet them!)

(continued)

I'm sure I will be telling my various goodbyes as the month of March unfolds. I like the word goodbye because it's a contraction for "God be with ye"—more of a blessing than a departure. So as the hymn says it,

*God be with you till we meet again;
by good counsels guide, uphold you,
with a shepherd's care enfold you;
God be with you till we meet again.*

Thank you, I love you, goodbye.



Please let Pastor Duane know if you are in need of pastoral care. If you would like to be contacted please call the office at 253-851-6222 or [email Pastor Duane](#). In an emergency, you can reach Pastor Duane at 509-998-6716 and leave a voicemail message.

NEWS FROM YOUR COUNCIL

As I write this article, I look out onto a yard of snow. According to the Farmers' Almanac, the weather folklore stems from ancestral beliefs in balance, meaning if the weather at the start of March was bad (roaring, like a roaring lion), the month should end with good weather (gentle, like a lamb).

Here's what's happening.

We rejoice at the completed sale of our rental house and property to The Homestead Community. They plan to begin remodeling in the next few weeks. We welcome them to our neighborhood and look forward to being partners in service with them.

We have a very important special congregational meeting on Sunday, March 12th to elect two delegates to attend the May 5th Synod Assembly. The meeting will take place at 10:30 following forum. We will be using the forum zoom link for that day for those not attending in person. The meeting will be short (10 minutes). Kathy and Gary Gemar have volunteered to be delegates. We will require a forum of 40 members to make the meeting and their nomination official. Please plan to stay through forum that day, or come a bit early for 11:00 service.

Council has appointed Suzanne Shema to fill the vacancy left by Charlene Franz's resignation. We thank Charlene for her service to Council, and the congregation. And we welcome Suzanne to Council.

Have you noticed the Free Pantry box located at the entrance to the Church? It was installed on the 23rd of January by Midday Rotary. Rotary will stock the pantry each week, as needed. If you would like to donate items for the pantry, here is a list: Suggested items are hygiene products and non-perishable food such as: pop-top and ready-to-eat soups, chili, canned tuna and chicken, granola bars, crackers, protein drinks, etc. Monetary donations can also be made. Designate your contribution to "Food Pantry."

And just a reminder, if you would like to donate to a specific purpose, i.e. Food Backpacks for Kids, Inter-Faith Youth Group, World Hunger, you must tell us so when you donate. If using Tithely, see the list of programs or fill in the spot marked "other." If using offering envelopes, please note your donation wish on the envelope.

What a great Chili Cook-off we had on the 18th of February! Well attended with 11 chefs presenting their best chili recipe. Check out the Golden Crockpot for this year's winners, and those who have taken the prize in years past.

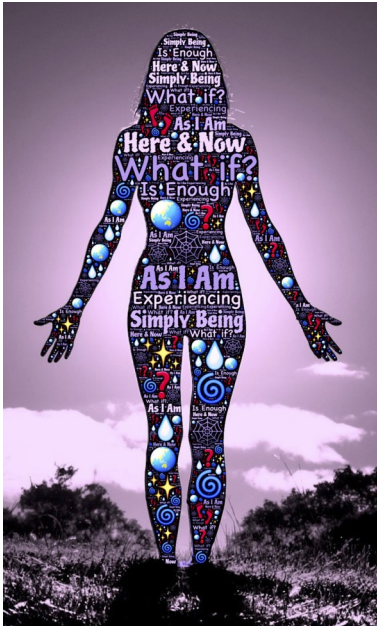
A reminder that meetings of every committee are open to all members. That includes the council meetings, which are held on the second Tuesday of each month in the community room. Two o'clock is the start time. We would welcome your attendance. Come see how the council functions for the congregation.

God's Blessings to you,

Lynette Brentin



*Lynette Brentin
Council President*



OUR LENTEN THEME – SIMPLER LIVING, COMPASSIONATE LIFE

We are in the liturgical season of Lent, a time set aside for solitude, reflection, and clarifying.

We are called to slow down, recover from distraction, to focus on living in God's way, with God's vision for our lives. A time to reexamine the values that we say we affirm. It is a time for discovering what it is we really want, to listen to the restlessness within us, the longing for God.

Lent is a time to ask ourselves if we are keeping these relationships healthy: with God, with ourselves, with other people, with all of creation. Our priorities become clearer when we look at the choices we make in our daily lives. What if we asked ourselves if our daily lives are aligned with the beliefs that shape our lives? Are we being honest with ourselves about our faith and what really matters most to us??

On our spiritual journey together this Lenten season we will be looking at what SIMPLER LIVING can bring us in rewards: greater compassion for others and concern for our earth, a more centered daily life, spiritual renewal as we move closer to the heart of God. These ideas will form the theme of our reflections during midweek Lenten services.

Simplicity, contrary to the suggestion of its name, is not a particularly simple or easy way. Life is complex and the walk of simpler living is something that we must assess individually for ourselves. The outward expression of simplicity asks about the physical stuff in our life. Is our home full of things that add beauty or function or that simply take up space and require energy to maintain? What about our relationships with people and with time? Do the people who matter most in our lives receive the time and energy from us that properly reflect their priority to us? Do we truly listen? How do we use our time? Do we expend significant amounts of time on unnecessary matters?

Voluntarily choosing simplicity reorients our hearts toward finding what is essential to us, clarifying what is our life's purpose. It helps in bringing forth a more just society. It is active in protecting God's creation for generations to come. This Lent is a great time to start.

Lenten theme suggested by Agnus Dei Green Team

Lenten Midweek Worship
Simpler Living, Compassionate Life

All Wednesdays in March
6:15 pm Contemplative Worship
6:45 pm Soup Supper



March 5th - Continuing the Green Team's presentation from February 26th on simpler living/compassionate life, we will form talking circles to interact together exploring thoughts, questions and experiences— past, present and future – that put the ideas for a simpler life into practice. There are no experts, so come engage in conversation with us. May our lives be enhanced by our intentions and choices as we abide in creation, one of God's blessings for all beings.

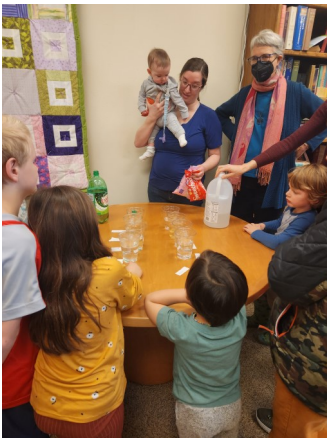
March 12th and 19th– Spiritual Disciplines, A Two Part Series: "As we continue following Jesus through our Lenten journey we sometimes wonder, are we becoming like Jesus? Can we be like Jesus? Join Phil Waite in the Forums on March 12 & 19 where we'll explore the concept of Spiritual Formation - that is, becoming like Jesus - and the spiritual practices we can engage that support our formation."

March 26th – We will focus on the liturgies of Holy Week during this adult forum. Palm/Passion Sunday marks the beginning. The transition from death to life that takes place over the course of the Triduum or the Three Days (Maundy Thursday, Good Friday, and the Easter Vigil) is the most intense of the Christian story. To prepare for this pilgrimage we will reflect on the history of this week and its ties to the Jewish Passover and the early church. We will take a look at the various environments that are created and why. Our goal is to gain an appreciation for the way simple, primary symbols of these days draw us into a richer understanding of these signs of grace.

Forums are on Sundays at 9:45 am and may be attended in person in the parish hall or on the Zoom platform; the link is found on the events tab of our website.

Sunday Morning Family Book Club

Next meets on March 5, 9:45 am



The third meeting of the Sunday Morning Family Book Club took place on February 5; the theme was "Love." The group met in the sanctuary for fellowship and a story and then moved down the hall to the community room for activities. There was a science experiment and several fun activities involving candy hearts as shown in the photos. The March meeting theme on March 5 will be Psalm 23.

Family Book Club is a monthly gathering of families who share in fellowship, a book, and an activity. Each family gets to take home a copy of the book. The books are childrens' books and the activities appropriate for all ages. However, family is a big word that can mean lots of things. No need to have a child in tow to come and join the fun! All shapes and sizes of families (and people!) are most welcome!



Joint Youth Group

The Gig Harbor Joint Youth Group under the direction of our Youth Director, Jess Gomez, meets weekly on Sundays (except the last Sunday of the month). Middle School meets from 5 to 6:30 High School meets from 6:30 to 8 pm at Gig Harbor United Methodist, 7400 Pioneer Way, in GH.



ADLC Care Team

The Care Team of Agnus Dei is up and running! Thanks to many volunteers, the following services outlined below are offered to our members. The coordinator for each service group is listed as well. If you or another need assistance, please contact the service group coordinator, whose phone numbers and e-mail addresses are in the church directory. Please also check out the Care Team Bulletin Board across from the Fellowship Hall for further information. Any questions, or to sign up to help, let us know!

Gwen Daug and Marlene Bridgforth, Care Team Co-chairs

ADLC CARE TEAM SERVICES AND NAMES OF COORDINATORS:

- ♥ TRANSPORTATION: GWEN DAUGS
- ♥ HOME VISITS: GHITA LORENZ AND CHARLENE FRANZ
- ♥ CARDS/TELEPHONE CALLS: MARY MARQUARDT
- ♥ BLOOD PRESSURE CHECKS: DAVID SALGE
- ♥ HOME COMMUNION: MARLENE BRIDGFORTH
- ♥ MEALS: ANN ROUSSEAU
- ♥ MEDICAL EQUIPMENT AND SUPPLIES: REBECCA CROW



Should Christians Think of Stewardship as Fundraising?

A few years ago, Pastor Seth led the Stewardship Committee in a book study of Mark Allan Powell's *Giving to God*. This was the source of the story about the Gauls and their swords that formed the basis for last month's stewardship article. Over the next few months, I will be sharing some of the things we learned about stewardship and giving.

The main tenet of Powell's book is that stewardship is not just about money, but "about all of life, about giving ourselves to God and using all that God has given us in grateful and appropriate ways." Early in his book, Powell does mention that he will talk more about money than anything else because ... (he) find(s) that for many of us this is where the issues become most real."

What do you think of when you hear the word, stewardship? Many people think money or fundraising, instead of the complete way of life that is the tenet of *Giving to God*. Powell points out two reasons for this, one good and one not so good. We will start with the not so good first, and many of you may have already figured out what this one is. Churches are partially to blame because we (including myself) often refer to the annual fund appeal as the stewardship campaign. Stewardship is not about fund-raising, but it is about a way of life.

The second reason is perhaps why Christians need to talk so much about money. Last month's article talked about the Gauls holding one arm out of the water during baptism so that they could use that arm to grab their sword and go into battle. Powell pictures many of today's Christians being baptized with their arms out of the water holding onto their wallets or purses. This is why we talk about money so often when we are discussing stewardship today.

Next month's stewardship article will begin talking about how stewardship is a way of life by discussing how giving to God is an act of worship.

Mike Snowden

Stewardship Committee

AGNUS DEI LUTHERAN CHURCH

SUMMARY FINANCIAL REPORT as of January 31, 2023
 (Twelve-month 2022 fiscal year + 13th month for transition to new fiscal year)

| | Jan 22 - Jan 23 <u>Actual</u> | 13-month projected <u>Budget</u> | % of YTD <u>Budget</u> |
|------------------------------|----------------------------------|--|---------------------------|
| OPERATING INCOME: | | | |
| Cash on Hand | - | 25,000 | 0% |
| Unrestricted Offerings | 495,367 | 460,000 | 108% |
| Rental House Reserve Reimb. | 16,428 | - | - |
| Little Lambs Preschool Tithe | 12,282 | 1,500 | - |
| Community Connect Contract | 5,420 | 5,421 | 100% |
| Other Income | 5,720 | 1,400 | 409% |
| TOTAL INCOME | 535,218 | 493,321 | 108% |

| Giving to Others Jan 2022 thru Jan 2023¹ | |
|--|--------|
| ELCA Mission Support | 29,825 |
| ELCA World Hunger | 12,689 |
| ELCA Disaster Relief | 1,000 |
| ELCA Good Gifts | 1,218 |
| FISH | 3,532 |
| Interfaith Youth Program | 6,857 |
| Food Backpacks 4 Kids ² | 5,096 |
| Key Peninsula Food Bank | 1,320 |
| Refugee Resettlement Prog | 6,649 |

| OPERATING EXPENSES | | | |
|---------------------------|----------------|----------------|-------------|
| Ministry of Education | 2,721 | 4,512 | 60% |
| Ministry of Mission | 33,587 | 29,850 | 113% |
| Ministry of Programs | 6,040 | 9,440 | 64% |
| Administrative Expenses | 186,041 | 184,245 | 101% |
| Staff and Services | 274,774 | 271,927 | 101% |
| TOTAL EXPENSES | 503,163 | 499,974 | 101% |

| | | |
|-----------------------------|---------------|----------------|
| NET OPERATING INCOME | 32,055 | (6,653) |
|-----------------------------|---------------|----------------|

NOTE: % Calculations do not include Cash on Hand as of January 1, 2022. That \$25,000 Cash on Han is in addition to positive fund balance at end of January, 2023.

*** Detailed financial reports are available upon request. Contact the Office Administrator to request a copy.**

¹These funds are pass-through and not part of the Operating Budget, with the exception of ELCA Mission Support. This monthly donation to ELCA programs is 6% of Unrestricted Giving for the month.
²Contributions to the Food Backpacks 4 Kids program exceeded designated giving in this 13-month time period by \$1,867, covered by funds previously given for this program.

| TOTAL RESERVES | |
|-----------------------------|----------------|
| Building Maint. Fund | 31,192 |
| Above & Beyond Endowment | 58,426 |
| Rental House Reserve | 21,460 |
| Operating Reserve | 64,000 |
| Music & Technology Reserves | 28,400 |
| Reserve for Future Uses | 33,934 |
| TOTAL, ALL RESERVES | 237,412 |

Prepared by Julie Bell February 13, 2023

Holy Week Worship Schedule

Palm Sunday, April 2, Worship with Holy Communion at 8:30 and 11:00 am
 The Triduum, a single service spanning three days, during which we celebrate Christ's Passion:

Maundy Thursday, Good Friday, Vigil of Easter all at 7:00 pm

Easter Sunday, April 9, Worship with Holy Communion at 8:30 and 11:00 am





News From Our Service Committee



February Outreach Wrap Up—Warm Chili for Cold February Nights!

Our outreach project for February was a collection of canned chili for the Key Peninsula Food Bank who expressed a need for warm meals to share with our neighbors in need. Thank you for your generous response! As of Feb. 27 the count was 252 regular sized cans and 4 extra large cans of chili to take to the food bank.

March Outreach Project—Canned Chicken and Tuna and \$\$\$ for Tortillas!

Our community outreach focus for the month of March will be on Food Backpacks for Kids. The program is in need of canned chicken and canned tuna to help provide protein to the families it serves. Please bring your donations of these items to the donation station in the narthex. We will also continue our commitment as the tortilla church. We will continue to accept financial donations to help with the monthly purchase of tortillas for the organization. To facilitate this endeavor, Ann Rousseau and Jerry Mjelde purchase and deliver tortillas to the organization’s center on the Key Peninsula. The monthly expense is just over \$450 which provides a lot of tortillas. Read the letter below from Zaida Woodworth, Executive Director for FB4K, to learn how these simple tortillas make such a huge impact in the lives of children in our community.

Hello Ann and Jerry,

First I want to send you and Agnus Dei a huge thank you for everything you have done to support FB4K over the years. Agnus Dei has been a corner stone of our organization and I hope you all feel a sense of pride and accomplishment when you see the results in our community. Agnus Dei has supported us significantly with many different items over the years, and your current consistent donation of tortillas has been crucial for our families and children experiencing the most food insecurity. Last week I received a call from our Communities in Schools partners about 5 homeless teens in our district. After brainstorming the most effective way to get consistent food to each of these children in very different circumstances, I packed their food. While each bag was different, tortillas were a staple in each—along with peanut butter, jelly, refried beans and canned chicken. The tortillas create possibilities for a variety of meals and can stand up to being packed around. From the bottom of my heart, know that we are so grateful to have them for our kids.

In August of 2021, I clearly remember running our numbers and working on our annual budget, and I predicted that need would go down for the 2021/22 school year. And again for the 2022/23 school year. I was very wrong as the numbers below illustrate. FB4K looks forward to a long and happy partnership as we work together to serve the children in our community!

| | September 2021 | December 2021 | May 2022 | September 2022 | December 2022 |
|--------------------------------|----------------|---------------|----------|----------------|---------------|
| Family Pantry families served: | 176 | 314 | 285 | 390 | 433 |
| Backpacks sent each week: | 0 | 41 | 78 | 51 | 116 |

To learn more about the program see: <https://www.foodbackpacks4kids.org/>





From the Green Team: Mason Bees Will Return this Spring

Spring is right around the corner and along with the arrival of spring, our new crop of Mason Bees are scheduled to arrive too.

If you'll remember, last year we hosted a block of Mason Bees (aka Blue Orchard Bees) at the entrance of our church. Our bees did a great job of pollinating the spring blossoms in our landscape and dutifully laid their eggs inside the block. At the end of the summer the block of baby bee eggs was returned to rentmasonbees.com to be processed and cared for over the winter. When spring arrives this year a new crop of cocoons will arrive. When the weather warms up, the new bees will hatch and begin the pollination process all over again.



Mason Bees are friendly little solitary bees. They have no queen, they are non-threatening and do not sting, making them the perfect bees to have around people and especially our preschool. Our Little Lambs loved learning about the importance of pollinators in our environment and enjoyed seeing the bee lifecycle playing out in front of their eyes.

In more exciting news, the folks at rentmasonbees.com appreciated our enthusiasm and support of their program so much that they are gifting us the bees and the supplies this year. A couple of our photos can be seen in their new brochure. If you would like to know more about Mason Bees and how their program works, visit rentmasonbees.com or use the qr code at right to watch a short video.



*A short video about
Mason Bees*

Agnus Dei Book Group

Book group will be meeting in the couch room on Sunday, March 26 at 12:15 to discuss *The Poisonwood Bible* by Barbara Kingsolver. Please join us in person or on the Zoom platform; you will find the Zoom link on the Events page of our church website. If you would like to join us, please contact Linda Zehnder to be added to the email list.



Congratulations...

...to the Duncan family!
Margaret and Scott
welcome their new
grandchild, Jack Stanley!

Jack was born on February 17. He weighed in at 7lbs 10 ounces and was 21 inches long.

Margaret and Scott have been in California this past week "soaking up all the baby snuggles."



We Celebrate...

MARCH BIRTHDAYS

- 2 Zoe Holmes, Kathy Higgins
- 5 Ryan Page
- 7 John Barelli
- 8 Kathy Chakerian, Chuck Anderson
- 9 Tracy Clark
- 11 Ghita Lorenz
- 13 Lynwood MacLean
- 14 Ehren Gossler
- 15 Kimberly Morgan
- 19 David Schinkel, Pastor Seth Novak
- 20 Tage Dobszinsky
- 25 Dave Horton
- 26 Jim Adair
- 27 Cathy Adair, Don Heinz
- 31 Margaret Ann Ellingson, Audrey Bakke, Henry Lofgreen

MARCH ANNIVERSARIES

- 3/78 Doug McDonnell and Kathy Fox
- 30/85 Doug Holien and Audrey Bakke

From Our Racial Justice Committee

Members of the Racial Justice group are attending meetings with five other ELCA congregations in Pierce County in a Confronting Racism program. A member of the Synod staff is involved with us. Monthly we meet to talk together about ways we can transform our thinking about and lives with other racial groups. There is some of that integration within our larger group. As we learn more we will be asked to address having relationships with People of Color within our church communities. God's vision of inclusion out from our church doors to the community. All of this falls within our Racial Justice statement, which is shared below (on our About Us section on our church website too). We ask for your prayers of support as we engage in this process. Please contact one of the attendees if you want to know more. We will do periodic updates. Marilyn Colyar, Phyllis Brandt, Sharon Ebelt and George Unruh

Rooted in the Word and grounded in prayer, we share our membership in the Beloved Community with all people, affirming that God's love, justice and mercy belong to everyone without exception. Aware of our failure to recognize the structures and systems contributing to racial injustice and inequality and acknowledging our role in maintaining these injustices, we confess and repent of the harm we have done. We commit to listen to the voices of the oppressed and marginalized, to educate ourselves more fully, to engage in work to end racism, to promote social justice, and to support others who seek to make a difference in the struggle for equity and justice. This is our lifetime commitment.

Grief and Loss Small Group

Agnus Dei Lutheran Church is continuing the Grief and Loss small group this Spring. The group meets every 2nd and 4th Monday, at 1:00—2:30 p.m. in the Couch Room at Agnus Dei Lutheran Church in Gig Harbor. Each meeting will include a short educational piece with time for discussion. The model used will be companioning one another in the bereavement journey as described by Dr. Alan Wolfelt (<https://www.centerforloss.com>). If you are interested, please contact [the office](#). Enrollment will be capped at 10 participants.

Remaining meeting dates: March 13, March 27, April 10, April 24

We remember in prayer:

For comfort and healing:

| | |
|-------------------|--------------------------------|
| * Ardith Johnson | * Barbara Ausich |
| * Jack Oakes | * Deb Brueckner |
| * Sonja Miller | * Beverly Buster Jr |
| * George Mitchell | * Chiarra Buster |
| * Michi Ouichi | * Audrey Clinton |
| * Joannah Powers | * Harlan and Pat Damron |
| * Ellis Rousseau | * Richard and Marilyn Hermstad |
| * Johnny Tierny | * Connie Hummel |
| * Trudy Wagner | * Eunice Werner |

In service to our country:

* CAPT. Jenny Nussbaum, US Public Health Service



Kids Night Out in March

The March Kids Night Out event will take place on the third Friday, the 17th, from 5:30—7:30pm. Kids have fun at the church while their parents enjoy a couple of hours to themselves. Games, music, pizza and a craft are included. Register on the Events tab of our website.



Spring Clean Landscape Work Party

Gather your favorite weeding and/or trimming tools and gather at the church on Saturday morning, March 11 from 9am to noon. We will work together to ready the gardens for Spring. If you have a wheelbarrow and/or a truck for hauling yardwaste to be recycled, bring them along too.

Serving in Worship, March 2023

| | | Altar Guild | Assisting Minister | Lector | Stream Team/ Sound | Ushers/ Greeters | Prayer Writer | Flowers | |
|----------|----------|--------------|--------------------|--------------|--------------------|------------------|---------------|---------|---------------------|
| March 01 | 7:00 PM | | M. Colyar | D Daug | M Snowden | D Krump | | x | <i>Lent Service</i> |
| March 05 | 8:30 AM | S Lubash | K Gemar | R Costanzo | B Nussbaum | Ohmes | S Whitney | x | |
| | 11:00 AM | E Nesbitt | A Ortenzo | C Franz | R Powers | L Colyar | | | |
| March 08 | 7:00 PM | | | M Bridgforth | B Beals | S Costanzo | | x | <i>Lent Service</i> |
| March 12 | 8:30 AM | J McCraw | D Schinkel | K Gemar | B Beals | Costanzo | P Waite | x | |
| | 11:00 AM | M Bridgforth | P Brandt | M Duncan | R Powers | L Colyar | | | |
| March 15 | 7:00 PM | | | K Gemar | B Beals | Brentin | | x | <i>Lent Service</i> |
| March 19 | 8:30 AM | S Costanzo | B Beals | D Daug | B Nussbaum | S Shema | K Gemar | x | |
| | 11:00 AM | R Crow | G Eilers | M Beert | R Powers | R Crow | | | |
| March 22 | 7:00 PM | | A Ortenzo | L Brentin | B Beals | | | x | <i>Lent Service</i> |
| March 26 | 8:30 AM | S Shema | R Spitzer | C Carlson | M Snowden | Brentin | D Waite | x | |
| | 11:00 AM | K Morgan | D Page | G Lorenz | L Zehnder | | | | |
| March 29 | 7:00 PM | | D Salge | C Franz | | S Shema | | x | <i>Lent Service</i> |

The following are the folks who are currently scheduling:

Sheryl Costanzo—Ushers and Greeters
 Debbie Snowden—Stream Team and Sound System
 Shari Shull—Assisting Ministers
 Paula Davis—Lectors
 Kimberly Morgan—Altar Guild

Please contact the office or call these folks directly if you are willing to serve. Flowers for worship are needed as well. The sign-up sheet is posted in the hallway across from the nametag board.

Thank you to the volunteers who serve in worship. More volunteers are needed in all areas and training is readily available.

Important reminders:

We Share the Air – Please Keep It Fragrance-Free and Healthy for All

In our effort to make everyone welcome, please be aware the chemicals used in scented products make some people sick, especially those with fragrance sensitivities, asthma, allergies and other medical conditions. We ask our entire community to be mindful of this and refrain from using perfume/cologne and other scented products when coming to Agnus Dei.

Let's Wear Our Nametags

As a sign of hospitality to visitors, please remember to wear your nametag! If you are in need of a new nametag, please call or email the church office or leave a note on Cindy's desk.

Fraud Alert; We Can't Repeat This Often Enough!

There has been a recent uptick in scam messages targeted at parishioners requesting monetary support for "people in crisis." Emails and Text messages appearing to come from clergy in general, and from Pastor Seth specifically, have been received by many in our Agnus Dei community. Please remember that **Pastor Seth or any of our staff will never contact you to ask for money, gift cards or financial information of any kind.** Never reply to these messages—they are fake. Do not click on any links, block them if you are able, and most certainly delete them.

Special Congregational Meeting

March 12, 10:30 am

All voting members are encouraged to attend a brief meeting to elect two delegates from Agnus Dei to the Southwestern Washington Synod Assembly on May 5/6, 2023



March

| Sunday | Monday | Tuesday | Wednesday | Thursday | Friday | Saturday |
|---|--|---|--|--|------------------------------------|--|
| 26 No Joint High School Youth Group 8:30am Worship with Holy Communion (Hybrid) 9:45am Faith Formation 11:00am Worship with Holy Communion 6:00pm ADLC Family Meeting | 27 1:00pm Grief and Loss Support Group 1:00pm LWR Quilters | 28 10:30am Church Staff Meeting | 1 10:00am Text Study with Zoom and In-Person 1:30pm Prayer Shawl Ministry 6:15pm Lenten Midweek Worship 6:45pm Soup Supper 7:15pm Choir Rehearsal | 2 | 3 | 4 8:30am Men's Square 8:30am Women's Circle |
| 5 8:30am Worship with Holy Communion (Hybrid) 9:45am Sunday Morning Family Book Club 11:00am Worship with Holy Communion 5:00pm Joint Middle School Youth Group 6:30pm Joint High School Youth Group | 6 1:00pm LWR Quilters 5:30pm Handbell Rehearsal | 7 10:30am Church Staff Meeting | 8 10:00am Text Study with Zoom and In-Person 1:30pm Prayer Shawl Ministry 6:15pm Lenten Midweek Worship 6:45pm Soup Supper 7:15pm Choir Rehearsal | 9 | 10 | 11 9:00am Spring Clean Landscape Work Party |
| 12 Daylight Savings Time Spring Forward 8:30am Worship with Holy Communion (Hybrid) 9:45am Faith Formation 10:30am Special Congr. Meeting 11:00am Worship with Holy Communion 5:00pm Joint Middle School Youth Group 6:30pm Joint High School Youth Group | 13 1:00pm Grief and Loss Support Group 1:00pm LWR Quilters | 14 10:30am Church Staff Meeting 3:00pm Council Meeting | 15 10:00am Text Study with Zoom and In-Person 1:30pm Prayer Shawl Ministry 6:15pm Lenten Midweek Worship 6:45pm Soup Supper 7:15pm Choir Rehearsal | 16 12:00pm Together Women Rise 5:30pm Theology on Tap | 17 5:30pm Kids Night Out | 18 |
| 19 8:30am Worship with Holy Communion (Hybrid) 9:45am Faith Formation 11:00am Worship with Holy Communion 5:00pm Joint Middle School Youth Group 6:30pm Joint High School Youth Group | 20 1:00pm LWR Quilters 5:30pm Handbell Rehearsal | 21 10:30am Church Staff Meeting 1:00pm Gather Bible Study 5:30pm Peninsula Art League | 22 10:00am Text Study with Zoom and In-Person 1:30pm Prayer Shawl Ministry 6:15pm Lenten Midweek Worship 6:45pm Soup Supper 7:15pm Choir Rehearsal | 23 | 24 | 25 Piano Recital |
| 26 "Stuffy Sunday" No Joint High School Youth Group Pastor Duane's Last Sunday with us 8:30am Worship with Holy Communion (Hybrid) 9:45am Faith Formation 11:00am Worship with Holy Communion | 27 1:00pm Grief and Loss Support Group 1:00pm LWR Quilters 5:30pm Handbell Rehearsal | 28 10:30am Church Staff Meeting | 29 10:00am Text Study with Zoom and In-Person 1:30pm Prayer Shawl Ministry 6:15pm Lenten Midweek Worship 6:45pm Soup Supper 7:15pm Choir Rehearsal | 30 | 31 | 1 8:30am Men's Square 8:30am Women's Circle |

Hybrid events may be attended In-person and online

All hybrid services are left on [Agnus Dei's YouTube channel](#) for viewing at any time after the service.

Agnus Dei Lutheran Church
10511 Peacock Hill Ave NW
Gig Harbor, WA 98332

RETURN SERVICE REQUESTED

The monthly newsletter of
Agnus Dei Lutheran Church
10511 Peacock Hill Ave NW
Gig Harbor, WA 98332

Submit newsletter items, subscription requests and address changes to Editor/Church Administrator: Cindy Beals
253-851-6222 office@agnusdeilutheran.org

Church Staff

Pastor: Rev. Seth Novak
253-851-6222, pastorseth@agnusdeilutheran.org
Minister of Music: Shari Shull, Deacon
253-851-6222, sharishull@agnusdeilutheran.org
Church Musician: Susan Luebeck
Church Administrator: Cindy Beals
253-851-6222, office@agnusdeilutheran.org
Congregational President: Lynette Brentin
Congregational Vice President: Linda Olson
Council Secretary: Marlene Bridgforth
Financial Secretary: Bob Nussbaum
Treasurer: Julie Bell

Council

Lynette Brentin, Marlene Bridgforth, Marilyn Colyar, Gary Gemar, Dick Ohme, Linda Olson, Linda Ribary, Denny Sapp, Suzanne Shema, Deb Waite

Little Lambs Preschool

Director/Teacher: Shannon Moore
Email: lambs@agnusdeilutheran.org
Financial Secretary: Kimberly Morgan
Little Lambs Board: Cathy Adair, Sue Horton, Nancy Johnson, Salli Middleton, Jerry Mjelde, Eiko Park