



Growing FORWARD TOGETHER

St. Paul's Anglican Church, Calgary
Parish Profile
April 2006

7 Sunmills Green S.E.
Calgary, Alberta
T2X 3P6
Phone (403) 256-1428
Fax (403) 256-1554
Email: apostlep@telusplanet.net
www.stpaulsanglican.net



St. Paul's parish vision:

“Opening hearts
and minds
to God's grace.”

“Like good stewards of the manifold grace of God, serve
one another with whatever gift each of you has received.”
(1 Peter 4: 10-11)

Executive Summary

St. Paul's has been serving Calgary families for 120 years, starting in a small chapel south of the city and now from a seven-year-old building ministering to families who live in south-central Calgary, south of Fish Creek Park.

We are a Christ-centred parish, committed to meaningful, inclusive and multi-generational worship, prayerfulness, and spiritual growth. Many of our activities reflect our strong sense of family and community.

We are a eucharistic parish and most often use the Book of Alternative Services.

Our congregation is a diverse mix of ages and attitudes: about 35 per cent are seniors; 15 per cent are children; and the rest of us fall in between.

St. Paul's has about 570 people on the parish roll and Sunday morning services average 140 people, including children.

Guiding Principles

- Our future will build on our current strengths.
- We will support and build our people's passion for ministry.
- We will partner with our Diocese and other parishes to provide needed ministries.
- We will provide a welcoming atmosphere to attract new people.
- We will strive to identify and serve the needs of our parishioners while reaching out to others.
- Our parish will be a beacon to the wider community.
- We will act justly, love kindness and walk humbly with our God.

Values

- Community involvement / caring for others
- Meaningful worship
- Inclusiveness
- Multigenerational
- Prayerfulness
- Spiritual growth

Our New Rector

You are a person of strong, centred faith who feels strongly called to join our parish.

You have a strong, living relationship with Christ, a love of scripture and a passion for the Gospel in its many personal and social dimensions, and an appreciation of the Anglican tradition of faith.

You enjoy working with a wide variety of age groups and have some ideas on how to increase youth involvement in parish life.

You also enjoy working in a team-ministry environment, both with other clergy and laity.

You are comfortable delegating tasks that draw on people's skills, giving them the support and guidance they need to accomplish what they have set out to do.



Parish Mission

Our mission is to live out God's love as revealed in Jesus Christ. With God's help:

- *Discovering God's presence in word and sacrament.*
- *Deepening a sense of Christian community.*
- *Sharing God's word.*
- *Nurturing God's people.*
- *Encouraging congregational and personal growth on our shared journey.*
- *Acting on God's call for peace and justice.*

Who We Are Looking For

We are looking for someone who has a calling for our vision, mission and goals.

While we're looking for certain traits and skill sets, we recognize that you can't always be all things to all people.

We also know that it's absolutely vital that the parish support you in your work – in fact, we delight in it. It's important that you feel you are part of our family, and can draw on our strengths and skills when needed.

You are a person of strong, centred faith who feels a strong calling to join our parish. You

have a deep, living relationship with Christ, a love of scripture and a passion for the Gospel in its many personal, social and political dimensions. You also have an appreciation of the Anglican tradition of faith.

Skill Sets

You are an engaging speaker whose sermons relate the Bible to our daily lives, offering us practical guidance. We'd like you to help us create challenging weekday Bible and prayer study, which expands our faith and understanding of it.

You'll use your strong leadership skills to organize various areas of ministry in the congregation. You enjoy working with all age groups – from seniors to children – and have creative ideas on how to involve our youth and young adults in parish life. You would need to take a strong role in developing our youth ministry.

You are comfortable delegating tasks that draw on people's skills, giving them the support and guidance they need to accomplish what they have set out to do.

With so many new families in south Calgary, you'll need to be comfortable welcoming new people and integrating their ministry skills into the congregation. You'll also draw upon your gifts to help us organize a strong pastoral/healing ministry.

You share our parish's, and our diocese's, commitment to ecumenism, as expressed by the Covenant signed by the Anglican, Lutheran and Roman Catholic bishops.

You are a strong communicator and will keep the parish informed about developments within the Anglican Communion and the Diocese of Calgary.

A sense of humour isn't a job requirement, but we're sure that it will be put to good use!°



It's important that you feel you are part of our family, and can draw on our strengths and skills when needed.



Our Parish

Our congregation is a diverse mix of ages and attitudes: we have young families who have been here for a short time and families who have been in the congregation for two and three generations. About 35 per cent are seniors; 15 per cent are children and the rest of us fall into the middle group, though we're a little light on the 20-somethings.

St. Paul's has about 570 people on the parish roll and Sunday morning services average 140 people, including children.

We are a eucharistic parish and most often use the BAS. At present, services are held Wednesday mornings at 9:15 a.m. and Sundays at 9 and 11 a.m. In May, we change to a Sunday summer schedule of one service at 10 a.m. The liturgy is the same at both services, while the 9 a.m. service has a keyboardist and full choir and the 11 a.m. service just has a keyboardist.

A nursery and Sunday school for children and youth though Grade 12 is held at 9 a.m.; a multi-grade school for Grades 1 to 6 is held during the 11 a.m. service.

We are a Christ-centred parish, committed to meaningful, inclusive and multi-generational worship, prayerfulness, and spiritual growth. Many of our activities reflect our strong sense of family: an annual Christmas pageant and dinner; moveable feasts (groups of four families which take turns hosting the others for dinner); occasional coffee houses; and a Stampede BBQ lunch. (We're a well-fed parish!)

We organize baptism, communion and confirmation classes as we need them – which, thankfully, is on a regular basis. A strong and committed group prays not only for the parish, but for troubled people and areas in the world around us.

Fellowship

A regular women's luncheon and monthly men's breakfast generate good fellowship, good conversation and good ideas about activities in the parish. Two Bible study classes meet regularly.

One of our most popular programs is Secret Friends, in which women in the parish exchange names and spend the next year "watching over" their secret friend with cards, small gifts and prayer. They wrap up each year with a Christmas get-together, when the secret friends' identities are revealed.

We have a desire to grow and strengthen both our Sunday School and Youth Group programs, and have begun a preliminary search for a youth minister. We recognize the importance of youth as an integral part of parish life and would like to ensure they play a larger role in activities. A member of the youth group sits on vestry and on the parish youth leader search committee. A number of our teens also are active in the Teens Encounter Christ program.

Music

Music always has been an important part of our parish life, and we're blessed with some great talent (and even greater commitment). Our music ministry is of 10-12 members.

Our singers are backed up



We expect our mortgage will be paid off in August 2008. The parish is planning an increased emphasis on stewardship, and we continue to watch our expenses prudently. Our parish roll showed 212 identified givers in 2006, which is stable.

Our Parish (cont'd.)

by a versatile keyboardist and the regular addition of guitar, and on occasion flute and tambourine. The music group leads the singing at the 9 a.m. service and all special services.

On special occasions we have a hand chime group, affectionately known as the Dingalings, who enrich our services.

We have been fortunate enough to have a volunteer play at the 11 a.m. service and fill in when our regular music

We draw on several hymn collections for our music, which gives us a blend of contemporary and traditional selections with a leaning toward the contemporary side. We always try to find that balance of music that appeals to all ages. Parts of our Eucharist service are sung, and in the near future we plan to introduce singing of the appointed psalm on a monthly basis.

Our Ministry Team

Team ministry is a key part of St. Paul's. The laity plays a strong role in supporting our minister, co-ordinating efforts for such organizations as the PWRDE, Operation Christmas Child and the Calgary Food Bank. The Sunday school supports a foster child in Ethiopia. Many parishioners are active in Cursillo, and we would like to revitalize our participation in the Marriage Encounter and Education for Ministry (EFM) programs. Volunteers take on the task of running the nursery, organizing servers, sidespeople, greeters, and myriad other jobs.

Members of the parish both young and old are responsible for the readings and leading the prayers of the people.

Our interim priest in charge, the Rev. Cyril Haynes, has been our long-standing honorary assistant at St. Paul's. He has played an active role in the life of the parish, far beyond simply assisting the rector on Sunday mornings. He's an integral part of our family and his quick wit and lively sense of fun are much appreciated.

We also have been blessed by the relatively recent addition of our deacon, Dr. Norman Knowles, and his family. Norman teaches at the nearby St. Mary's University College and brings both a warm style and a wealth of knowledge to our parish.

Our secretary, Laura Anne Fink, works half days and plays a key part in keeping everyone

Parish attendance figures

	2001	2002	2003	2004	2005	2006 (Jan.-Mar.)
Average Sunday attendance	160	157	150	136	144	139
Average midweek attendance	-	19	14	17	17	16
Attendance at special services	-	867	957	846	812	-
Parish role	544	607	610	610	616	570



We are blessed with some wonderful musical talent at St. Paul's, and have a committed group of 10 - 12 members.

leader is away, but that will change as our young volunteer heads off to university in the fall. It will be a challenge finding another committed person to be both our backup and to play at the 11 a.m. service.

Our Parish (cont'd.)

on track. Laura Anne's sons are active in the youth group, and her husband Chris often accompanies the choir on guitar.

Our last rector, Carmen Simmonds, was with us for five years. She provided strong leadership and pastoral care to our congregation. We appreciated her compassion, understanding and loving nature, and we wish her well in her retirement.

Outreach

Seniors living in the adjacent Sundance on the Green apartment complex (associated with the Bethany Care Centres) have been welcomed and play an

important role in the parish. A number attend services regularly, and many others enjoy taking part in parish events such as the fall tea and Shrove Tuesday pancake suppers.

We also have had a strong, active relationship with the Father Lacombe Centre (a nearby nursing home) for more than 15 years. A group of volunteers holds a hymn sing every Friday and every other Sunday, and our lay team holds a Eucharist service on the fourth Sunday of each month. Some parishioners also visit residents on a regular, informal basis.

Visions and Challenges

It's important to us that St. Paul's is seen as a place for everyone in the family – and not just on Sunday mornings. We try to make the parish a place where Christians can socialize, where we have activities for our young people, where seniors (especially those whose families are not at hand) can mingle with people of all ages.

The parish's Vision 2000 Workshop laid out a number of priorities, including community outreach, creating reasons for people to come to the church and participate, and encouraging more interaction between youth and seniors.

Focus on Growth

A motion presented at the 2001 annual general meeting laid out a key challenge: to prepare a plan to increase parish membership aggressively.

In 2003, vestry set the five-year goals of:

- increasing our service to the communities south of Fish Creek Park; and
- serving 400 families through worship, programs and

ministry by Dec. 31, 2007.

These goals were to be accomplished by:

- continuing the Visioning process;
- developing a facilities plan for expansion of the church to accommodate present and future programs;
- revitalizing our youth ministries through youth leadership development; and
- developing strategies to address the Bishop's Charge to target development around people, programs and property.

Our Challenges

Our challenges are, we suspect, those faced by many parishes today.

We continue to look for ways to strengthen our outreach to the community, bringing Christ's message to people who haven't heard it. Part of this will involve getting more members of the congregation directly involved in various programs.



We also face a challenge in retaining young families ... our Sunday school numbers do not reflect the relatively young demographics of the surrounding communities.

Visions and Challenges (cont'd.)

Income & Expense Statement	
January - December 2005	
Ordinary Income/Expense	
Income	
Member Giving (receiptable)	\$ 181,956.59
Pass Through (receiptable)	0.00
Non-Receiptable Donations	9,385.52
Projects	0.00
Accrued Income	- 161.00
Interest Income	979.95
Hall Rentals	<u>1,360.00</u>
Total Income	193,521.06
Expense	
GST	1,075.92
Financial Expenses	36,000.00
Administration Expenses	25,548.09
Building & Grounds Expenses	20,054.13
Congregational Expenses	3,901.43
Worship Expenses	4,993.88
Outreach Expenses	13,735.43
Diocesan Expenses	28,234.00
Ministerial Expenses	<u>79,602.93</u>
Total Expenses	<u>213,145.81</u>
Net Ordinary Income	<u>-19,624.75</u>
Net Income	<u>-19,624.75</u>

We've reached the point where we need to involve more people, not only for their own spiritual growth but to avoid burning out a few keen volunteers. Frankly, we're having a hard time getting people to step forward.

We also face a challenge in retaining young families. We regularly see instances of families coming for a few weeks and then drifting away, and would suggest that our Sunday school numbers do not reflect the relatively young demographics of the surrounding communities. While the parish has not conducted regular formal follow-up with these families to determine why they left, we do have anecdotal evidence of

their leaving for other parish/churches environments that are more amenable to young families.

Striking A Balance

We also face a challenge in finding ways to serve our growing congregation – not strictly in terms of more services, but striking that balance between traditional and more modern service and music styles. A key current challenge is to provide leadership to our youth and to increase their role in parish life. We

are currently looking for a youth leader but have not yet found any promising candidates.

Pastoral care took a large

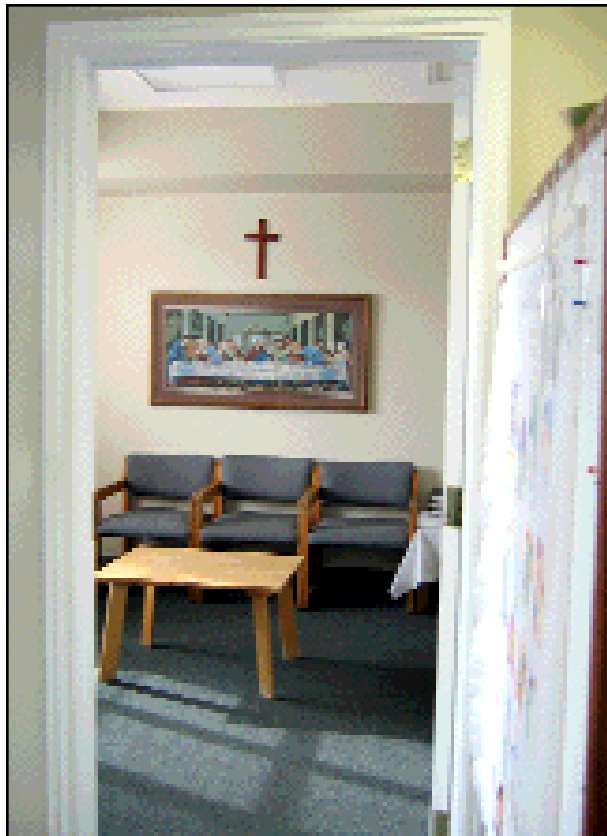
part of our former rector's time. We have developed a group of five lay ministers to support this vital field, and expect this ministry to remain a high priority.

We're very aware that growth of our facilities and prudent financial planning must go hand-in-hand. We anticipate that the parish will be mortgage-free in August 2008. And while our building is quite new, we are starting to feel cramped: we need to continue longer-term planning for a careful, well-executed expansion that doesn't leave us "house-poor."

We also face the challenge of raising our visibility: we are somewhat hidden from view and need to make the church easier to find, through signage and other means. We also need to make the surrounding communities more aware of our presence.

Draft expansion plans have been drawn up, with an emphasis on adding office, storage and classroom space – areas in which we are clearly lacking.

Our focus must remain on the church, not on the church building. And while we continue to plan for measured growth, it is equally important to us that we keep that small-parish friendliness.



A small chapel is available for prayer and quiet meditation.

Our History

St. Paul's, the oldest remaining Anglican church in Calgary, was built in 1885 and originally was known as St. Paul's Fish Creek. It actually sat south of Calgary, near the town of Midnapore, but Calgary's growth overtook the small town. As the congregation grew, services moved to a white parish hall that was transported from St. Martin's Calgary to beside the chapel.

The province declared the chapel a historic site in 1977 and the congregation restored the interior and exterior. Bishop Barry Curtis rededicated the chapel in the fall of 1991.

As Calgary's population boom continued, even the combination of the chapel, parish hall and space leased in an adjacent Roman Catholic church couldn't keep up with the growing congregation. The decision was made to move to a new location to accommodate Calgary's continued push farther south.

While suitable land was sought and plans were drawn up, the parish continued to outgrow our space. MacInnis and Holloway, the nearby funeral home, generously let us meet (at no charge) in their chapel for two years while we explored our options.

The opportunity to build some sort of link between a new building and the surround-

ing community came when the Bethany Care Centre approached us with an offer to build the church and an adjacent non-profit seniors housing complex.

The partnership also helped to ease some of the mortgage burden; and with the approval of the diocese plans went ahead.

Ground for the joint project was broken in April 1998, and the parish moved into its new building that November.

The parish recognizes that as its family grows, we may need to expand our current facilities. Several options for expanding the narthex, sanctuary and other support space have been drawn up, but we believe that the priority lies on growing the congregation, not the concrete.

While we look forward to growth, we also recognize our roots: the chapel is maintained by a foundation, the Midnapore Church of England Society. While it's too small to host regular services, the rector is responsible for the occasional services held there.



St. Paul's chapel in nearby Midnapore is a provincial historic site.

The Communities We Serve

St. Paul's sits on the south-central edge of Calgary, serving a range of subdivisions including Sundance (where the church is located), Midnapore, Shawnessy, Millrise, Evergreen, Chaparral, Cranston and McKenzie. New subdivisions continue to pop up to the southeast and southwest of the church. The communities we serve – among the fastest-grow-

ing in the city – are mainly a mix of middle- to upper-income homes, ranging from small condominiums and co-op housing to sprawling lakeside mansions.

Demographics

The area has a large youth population and many extremely busy double-income families. A number of organized sports

The Communities We Serve (cont'd.)

have had trouble finding parents to volunteer as coaches.

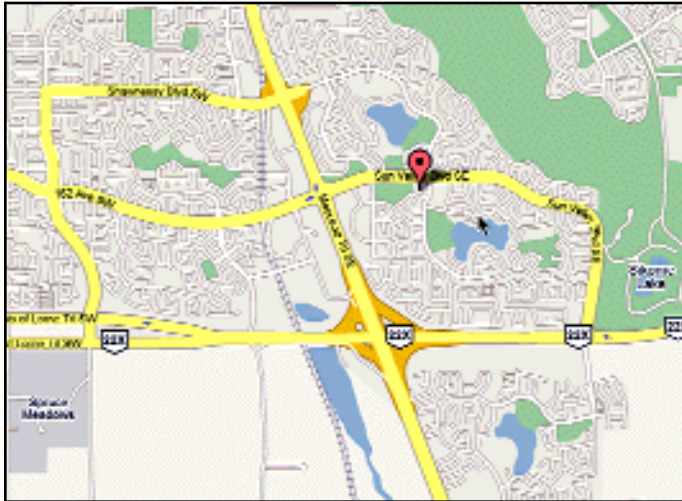
Both the Calgary Public and Roman Catholic school boards serve the area, with a number of elementary, junior and senior high schools in the immediate vicinity. Many students

are bused to balance school populations, and while both boards offer French immersion programs, these students also are bused.

Several private charter schools (at least two having a strong faith focus) also

are nearby.

St. Mary's University College is less than a 10-minute drive from the church. The University of Calgary in northwest Calgary is about a half-hour drive and is on the Light Rail Transit (LRT) line. Mount Royal College in the southwest is about a half-hour away by car, and the Southern Alberta Institute of Technology (SAIT) in northwest Calgary is a 40-minute drive. (SAIT also is on the main LRT line.)



Amenities

Shopping and family amenities are plentiful: a large commercial area just west of Macleod Trail is home to Safeway, Co-op, Winners, Wal-Mart, Home Depot and Staples, among others.

Two major shopping centres are a short drive north on Macleod Trail, and a "big box store" area with outlets including Ikea, Costco and Best Buy is about 15 minutes away, at Deerfoot Trail and Heritage Drive.

A major library, arena and YMCA complex is less than five minutes west of St. Paul's, and the Southland Leisure Centre, with a wave pool and gym facilities, is less than 15 minutes to the north.

There are several large and growing Christian churches in the area, including Sunwest, Alliance and a Presbyterian congregation.

We are in many ways "the small hidden church" – in part due to the fact that we are not visible from Sun Valley Boulevard (the main thoroughfare into Sundance) or from Sunmills Drive (the street from which you access St. Paul's.) We are set back from the street and the senior's residence and nearby strip mall make us hard to spot.

Life in Calgary

It's a city of energy, enthusiasm and excitement – but there's far more to Calgary than the Stampede, Spruce Meadows equestrian centre and skiing. Drive 90 minutes in any direction and you'll encounter vastly different sights: the Rocky Mountains to the west; south to foothills and rolling prairies; east to the badlands and dinosaur beds of the Red Deer River Valley; north to verdant parkland. Major highways lead

to other large centres including Lethbridge, Red Deer and Edmonton. Banff, Canmore and the Kananaskis recreation area are less than 90 minutes away.

An Active City

We are an active city, as reflected in the extensive network of walking paths, parks and bicycle trails that literally can take you from one edge of the city to the other. Calgary

Life in Calgary (cont'd.)

also offers a variety of cultural venues and events, with several theatre groups, the Calgary Philharmonic Orchestra, and a broad range of restaurants.

Favourite family destinations include the Calgary Zoo and Heritage Park, a re-creation of a turn-of-the-century Prairie town.

While we have the usual challenges of a growing metropolitan centre, Calgary tends to be a safe city, with relatively easy access to the various subdivisions. The summers generally are warm and our famous chinooks, which can raise the temperature from -20°C to $+10^{\circ}\text{C}$ in an afternoon, are always welcome during the winter (though migraine sufferers may disagree). That said, the joke that "If you don't like the weather, wait 10 minutes" holds true. We also can have snow in July and August and not a flake on the ground at Christmas.

Housing Market

Calgary's housing market is booming – and, unfortunately, bottlenecked: real estate prices are the second-highest in Canada and demand has pushed prices up and availability down. Builders are struggling to keep up with demand and the waiting time for new houses can be up to a year. (There just aren't enough tradespeople available.)

Traffic in Calgary is a contentious issue: infrastructure has not kept up with the city's growth and the rush-hour commute to and from downtown can

be a crawl. That said, it certainly is not as serious as in other major Canadian urban centres, and access to the area served by St. Paul's generally is good.

The major north-south thoroughfare, Deerfoot Trail, provides quick access from south of the city to its northern outskirts.

Several secondary routes, including Macleod, Crowchild and Glenmore Trails, 14th Street and Blackfoot Trail offer relatively quick movement between the city's four quadrants.

Calgary International Airport, on the northern outskirts of the city, is about 15 minutes from the downtown core and a half-hour from the parish.

Highway 22X runs east-west across the bottom of the city, offering a quick escape west to the Foothills or access to Deerfoot Trail. Macleod Trail is the main route north from the parish, and rush-hour bottlenecks have been reduced by two new interchanges.

We also have good access to the Light Rail Transit (LRT) system, with a station at 162nd Avenue, just west of the parish. (Parking at the LRT lots can be a challenge, which speaks to the system's popularity.)



View from downtown Calgary looking west: recreational areas in the Foothills and Rocky Mountains are about an hour's drive away.

Closing Thoughts

There's a fine line between expressing a parish's hopes, desires and strengths and creating a sales pitch: we hope that we've found the balance in this profile. We're proud of our heritage; we're firmly focused on

the future and on growth; and we delight in the prospect of welcoming a new rector into our family and working closely together to make St. Paul's a more vibrant and Christ-filled parish.