



Weekly Newsletter

November 27 - December 3,
2022

Church@Home

Acts: Turning the World Upside Down
[Acts 24: 1 - 32](#)





Gateway Fellowship Women's Ministry Christmas Brunch



Saturday December 10, 2022
10:00 am

**Contact Kathie or Katherine
for more information**



**Food, Christmas carols, Devotional,
and Gift Exchange!**

Please bring:
A dish for the brunch (see sign up list)
and
A wrapped gift with a Christmas theme

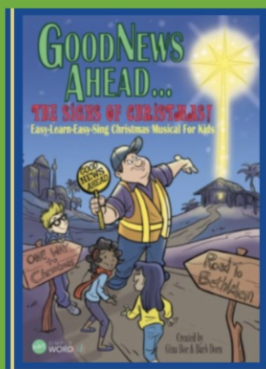
Sign-Up

Kathie

Katherine

Children's Ministry Musical

**MANDATORY
PRACTICE**



DECEMBER 17 TH
10:00 A.M. – 1:00 P.M

All children must attend

Parents may drop off children

Kids will have a pre-party

Lunch will be provided

All children are required to attend the mandatory rehearsal practice. Please drop your child(ren) off at The Crossing no earlier than 9:45 and before 10:00, on December 17th. Parents do not need to stay. After rehearsal, kids will have a pre-party and a pizza lunch will be provided. Please pick your child(ren) up at 1:00. We appreciate your dedication to making this production possible.

Annual Christmas Partnership with The

GreenHouse

A festive graphic with a dark red background. It features a green gift box with a gold bow on the left, and a pine branch with gold and red ornaments and snowflakes on the right. The text is centered in gold and white.

**CHRISTMAS
FAMILY
GIFT PARTNERS**

Choose an ornament from the tree by the
Welcome Table

Bless a family from the
Gardenland/Northgate neighborhood
with a gift card

Pray for one another this holiday season

Return by December 18th

The logo for The GreenHouse, featuring a stylized green tree above the text "THE GreenHouse" in blue and green.

Before taking any ornaments, please sign up on the sheet near the tree. Fill out all the information! Thank you for keeping us organized! An even greater THANK YOU for blessing the families of The GreenHouse this Christmas!

Information

A festive graphic with a dark red background and bokeh light effects. It features strings of warm white lights and star-shaped ornaments. The text is in white and colorful.

Whole-Church

**CHRISTMAS LIGHTS
& HOT CHOCOLATE**

DECEMBER 21

6:30 - 7:30 PM	7:30 - 8:30 PM
Meet at Burberry Community Park (Corner of Northborough & Mabry) 2400 Burberry Way	Walk around Rockmont Cir. Then meet at The Marczak's House for hot chocolate!

MEXICALI DONATIONS

Men's Clothing ONLY, PLEASE

NEW Socks



**Sweatshirts
Jackets**



Gently Used Shoes



The Marczak's will be leading their annual mission trip to Mexicali right after Christmas! The Team will be working with Gil and Kim Blanco, and the Mexicali Base, to share the gospel and to fulfill our commitment to The Great Commission - to take "All of Jesus" to "All the World."

The team will spend the week leading homeless outreach, providing VBS for local children, supporting the Mexicali church planting mission, preaching God's Word, and sharing their testimonies and the powerful presence of Jesus in their lives!

Please Consider Donating for MEN ONLY:

New socks

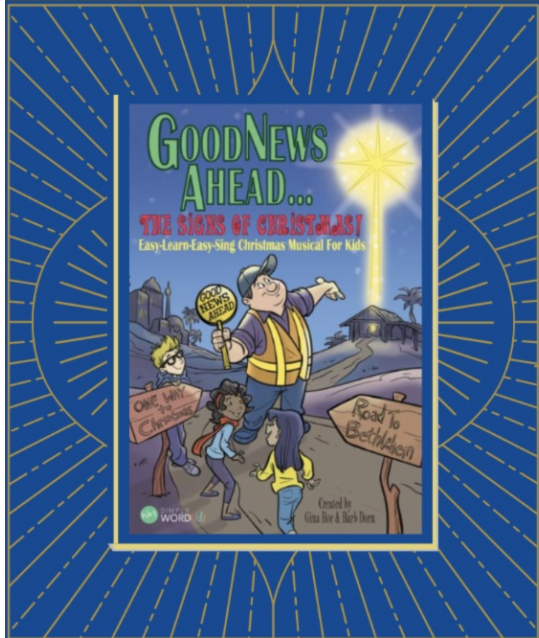
Jackets and sweatshirts

Gently used shoes (for cold weather)

AND

Small, gently used toys for the children

A clearly labeled donation box will be placed near the entrance of the church. We are collecting these items through Christmas Sunday. We thank you for your prayerful support of the Marczak's Mission Team and the Mexicali community.



GATEWAY KIDS PRESENTS

A CHRISTMAS MUSICAL

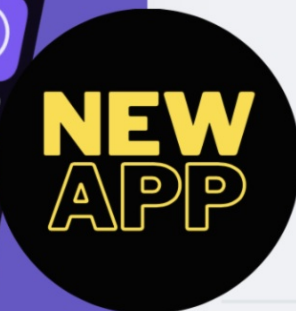
GOOD NEWS AHEAD
THE SIGNS OF CHRISTMAS



DECEMBER 18TH
6:00 P.M.



Scan to download
the app



OR





Instant Church Directory™

**IS YOUR CONTACT INFORMATION
CURRENT?**

Scan the QR to update your
address, phone #, or email

LET'S STAY CONNECTED

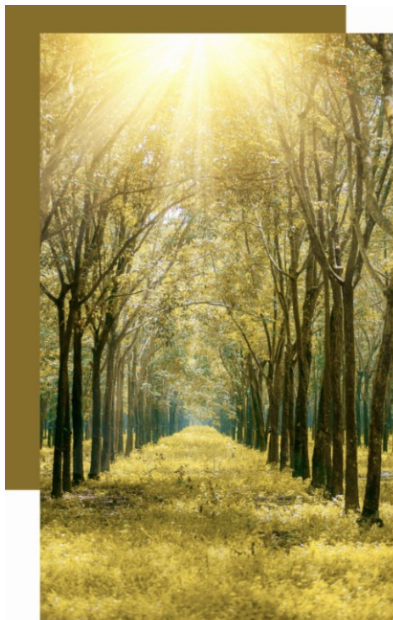


Wolske Family Update



Please be praying for our sweet Jenna Girl (International Worker's Daughter). She will be having her 3rd brain surgery in 6 weeks this morning to remove the brain tumor that has grown back at a very rapid rate and has been causing issues again. Please keep the family in your prayers and consider giving to help them with the immense expenses they will be faced with in the days and months to come!

[GoFundMe](#)



Monthly Monday
Fasting & Prayer

**YOU ARE
INVITED**

Every 2nd Monday

To Join us in Churchwide
Fasting and Prayer.

Details in Newsletter

[Prayer Guide](#)



**Ready.
Set.
Join.**

Current groups are listed in the Weekly Newsletter.
Contact the group leader for more information!

Grow in Jesus with us!

Love
Support
Friendship
Fellowship
Connection

Fellowship Group
Directory



Are you on Facebook?
We are!
"Follow" our page.
"Like" our posts!
"Share" everything to
your own page!



Do you "follow" Gateway
Fellowship on IG? Sign
up and "like" our posts!



Never miss a sermon!
Subscribe to our
YouTube channels!

English
or
Spanish

Prayer Requests

We would love to pray with you.
Please email us your prayer request.

Por favor, envíe su pedido de oración.

Send /
Enviar



Tithe and Offering

October Giving: **\$15,780.19** Monthly Goal: **\$18,500**

There are several ways to send your tithe and offerings:

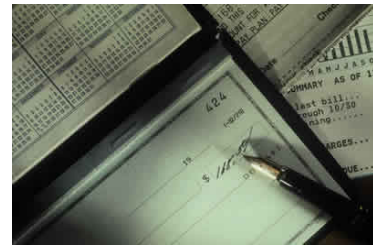


Set up automatic payments from your bank account.



TITHE.LY

Connect to
Tithe.ly



Gateway Fellowship
Church
2121 Natomas Crossing
Dr., #200-318
Sacramento, CA 95834

Save the Dates:

The GreenHouse Christmas Family Gift Project November 27th - December 18th

Women's Ministry Christmas Gathering December 10th @ 10:00 A.M.

Legacy Christmas Party December 14th @ 7:00 P.M.

Children's Ministry Musical December 18th @ 6:00 P.M.

Whole-Church Christmas Lights & Cocoa December 21st, 6:30-8:30 PM

Monthly Fasting & Prayer Second Monday of EVERY month, 24-hour, church-wide fasting and prayer day.

Ladies Book Club Every other Saturday @ 3:00 p.m. via ZOOM. Contact Suzanne Lariviere for more information.

Legacy (youth group, Weekly) Wednesday's @ 7:00 p.m. @ 5133 Fredericksburg Way, Sacramento. Legacy also meets on the last Sunday of the month during preaching at church. Email youth@gatewayfellowship.net for details.

Prayer Meeting (Weekly) Sunday @ 9:00 - 9:45 a.m. via ZOOM

Fellowship Groups (Various dates and time) Click the directory below.



Stay Connected



Gateway Fellowship | 2121 Natomas Crossing 200-318, Sacramento, CA 95834

[Unsubscribe kristy.goldhammer@gatewayfellowship.net](mailto:kristy.goldhammer@gatewayfellowship.net)

[Update Profile](#) | [Constant Contact Data Notice](#)

Sent by kristy.goldhammer@gatewayfellowship.net in collaboration
with



Try email marketing for free today!