

AFGHAN REFUGEE RESETTLEMENT TEAM

JULY REPORT TO THE CONGREGATION

**MANY THANKS FOR YOUR CONTINUED SUPPORT!**

The total contributions from the congregation have been \$4,730.00 plus \$20.00 in Kohl's Cash (plus \$20.00 in *earned* Kohl's cash) and \$15.00 Kohl's Rewards [total \$55.00] and \$38.11 in Menards rebates. We--again--thank you for your generous financial support and ask for your continuing prayer support. We, also, again thank the SMLC Endowment Foundation for the \$1,000.00 grant.

**ECCUMENICAL EFFORT**

We have continued to work with St. Matthew's Episcopal Church (SMEC). We have assisted with driving their family members, when needed. We will be working with SMEC Team for our placements. They already have contacts for many of the same agencies that we will need for our placements. That joint effort will help for a smoother transition for the two men co-sponsored by SMLC. We are appreciative of the SMEC Team's assistance.

**PLACEMENT**

We continue to await word from LSS.

**PRAYER FOR MIGRANTS AND REFUGEES**

*Dear Lord Jesus,*

*Your family on Earth knew the life of refugees when they fled to Egypt.*

*+ Bless all who seek refuge on this earth.*

*+ Meet their needs for safety and for home.*

*+ Move the hearts of your people to show them welcome.*

*+ Bring justice to the nations so that no one will need to flee again.*

*In your great mercy, Lord, hear our prayer.*

*Amen.*

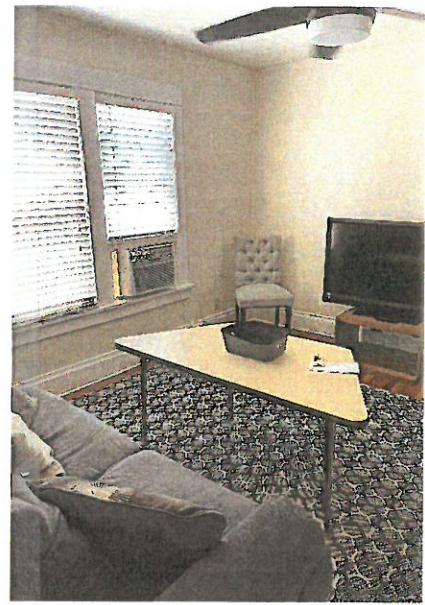
-continued-



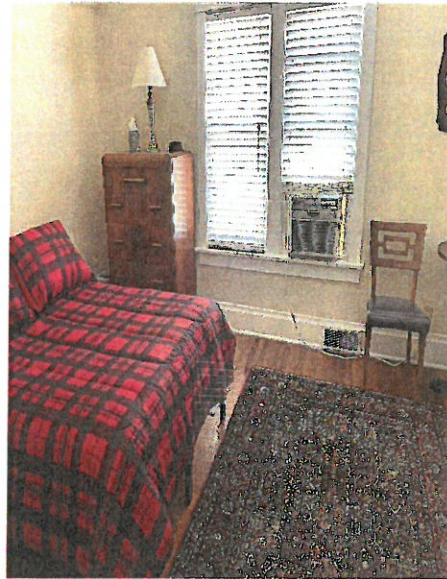
Kitchen

### THE APARTMENT

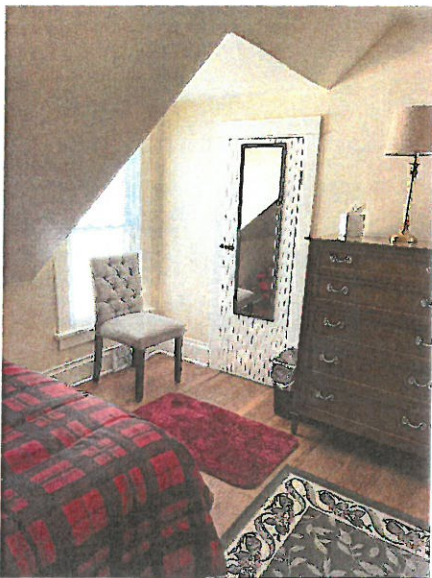
While we cannot divulge the location of the apartment, we are able to share these photographs of the apartment interior.



Living Room



East Bedroom



<-- North Bedroom -->

