

Way Maker

(based on the recording by Leeland)

Words and Music by
Osinachi Kalu Okoro Egbu

♩=68

VERSE 1

A

E



1. You are here, ___ mov-ing in ___ our ___ midst; I wor - ship You, .

3

B^{sus}

C#m

A



___ I wor - ship You. ___ You are here, ___ work-ing in ___ this ___

6

E

B^{sus}

1.
C#m



___ place; I wor - ship You, ___ I wor - ship You. ___ 1. You are here,

9

2.
C#m

CHORUS

A

E



___ You are Way Mak-er, Mir-a-cle Work-er, Prom-ise Keep-er, Light in the dark-ness, .

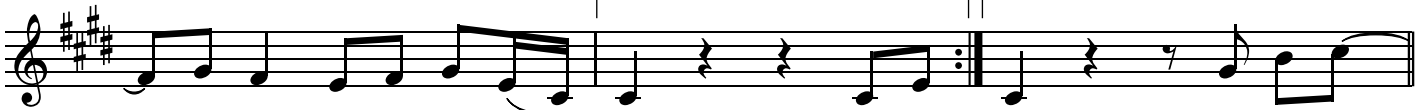
12

B^{sus}

1.
C#m

2.
C#m

B



___ my God, that is who You ___ are. You are are. 2. You are here, ___
(3. You are here,) .

VERSE 2 & 3

15

A

E

B^{sus}



___ touch-ing ev - 'ry ___ heart; I wor - ship You, ___ I wor - ship .
___ turn - ing lives ___ a - round; I wor - ship You, ___ I wor - ship .

CCLI Song # 7115744

© 2016 Integrity Music Europe

For use solely with the SongSelect® Terms of Use. All rights reserved. www.ccli.com

Note: Reproduction of this sheet music requires a CCLI Music Reproduction License. Please report all copies.

CCLI Licence # 129038

18 C#m A E

— You. You are here, — heal - ing ev - 'ry — heart; I wor - ship You, .
 — You. You are here, — mend - ing ev - 'ry — heart; I wor - ship You,

21 1. B^{sus} C#m 2. B^{sus}

— I wor - ship You. — 3. You are here, — yeah, — I wor - ship .

24 C#m A

— You, Lord. — You — are — Way Mak - er, Mir - a - cle Work - er,

26 E B^{sus} 1, 2, 3, 5. C#m

Prom - ise Keep - er, Light in the dark - ness, — my God, that is who You — are. You are

29 4, 6. C#m TAG 1a A E/G#

are. That is who You — are. That is who You — are. That is who You —

32 B 1, 3. C#m 2, 4. C#m

are. That is who You — are. That is who You — are.

35 CHORUS A E

Way Mak - er, Mir - a - cle Work - er, Prom - ise Keep - er, Light in the dark - ness, —

37 B^{sus} 4th time to Coda Φ 1, 3. $C\#m$ 2. $C\#m$

— my God, that is who You _ are. You are are.

40 **BRIDGE** A E

E-ven when I don't see it, You're work-ing. E-ven when I don't feel it, You're work-ing.

42 B^{sus} 1, 2, 3. $C\#m$

You nev - er stop, You nev - er stop work - ing. You nev - er stop, You nev - er stop work - ing.

44 4. $C\#m$ D.S. al Coda

You nev - er stop, You nev - er stop work - ing.

45 Φ Coda $C\#m$ **INSTRUMENTAL** A^2 E $B^{(4)}$

are.

49 1. $C\#m^7$ 2. $C\#m^7$ **TAG 1b** A^2

That is who You _ are. That is who You _

52 $E/G\#$ $B^{(4)}$

are. That is who You _ are. That is who You _

54

1. C#m⁷

2. C#m⁷ A²

are. That is who You _ are.