



Christ Church Cathedral

Spr ing Break

SURVIVAL KIT

JAM PACKED WITH STUFF
TO HAVE FUN AND LEARN AT HOME



Spring Break

SURVIVAL KIT

WHATS IN THIS KIT?

SPRING BREAK PLANNERPAGE 4

CRAFTS.....PAGE 5-6

NATURE BINGO.....PAGE 7-10

WORDSEARCH.....PAGE 11

COLOURING PAGESPAGE 12-15

TRIVIA.....PAGE 16

TRIVIA ANSWERS.....PAGE 17

LABYRINTH.....PAGE 18





Spring Break

PLANNER



SOMETHING IM EXCITED FOR



THINGS I WANT TO DO

- ---
- ---
- ---

PEOPLE I WANT TO SEE



- ---
- ---
- ---



Crafts!

Draw a map below, it could be a treasure map or map of where you live, or your favorite place, the Bible teaches us "where your treasure is, there is your heart also".

I wonder what your treasure is? I wonder what God's treasure is?



Crafts!

Here are some natural craft ideas you could try!

I wonder what draws you in nature? I wonder what you might make?





Crafts!

Make your own natural hair face below!

I wonder how God delights in all you are and will become...



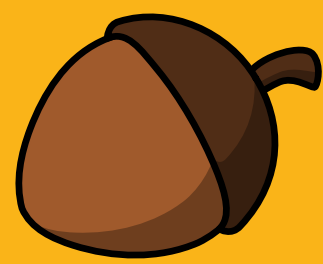
Nature Bingo

PLAY 2 WAYS! EITHER GO OUTSIDE AND CROSS OFF THE ITEMS YOU FIND OR TAKE PICTURES OF THEM, OR GO OUT AND COLLECT THE ITEMS AND THEN PULL THEM FROM A BAG TO PLAY TRADITIONAL BINGO AT HOME WITH THE WHOLE FAMILY!

Bingo



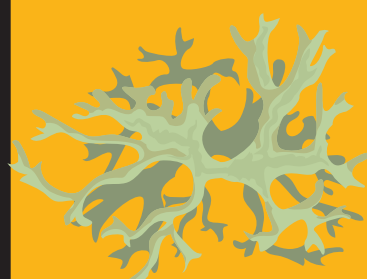
DARK ROCK



ACORN



LEAF



LICHEN



MOSS



TWIG



BARK



FLOWER



PINE CONE



FEATHER



A BUD



PALE ROCK



SEED



SOIL



SAND



SOMETHING
PINK



SOMETHING
BLUE



SHELL



SOMETHING
WITH THORNS



DRY LEAF



SOMETHING MADE
BY HUMANS



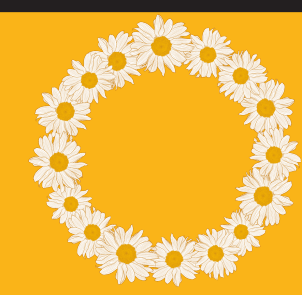
SOMETHING
ROUGH



SOMETHING
SMOOTH



SOMETHING
FLUFFY



SOEMTHING YOU
MADE FROM
NATURE

Nature Bingo

BINGO CARD 2

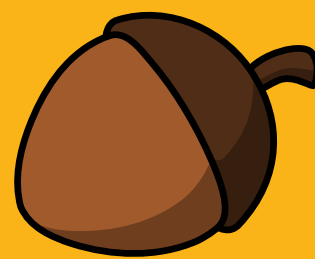
Bingo



MOSS



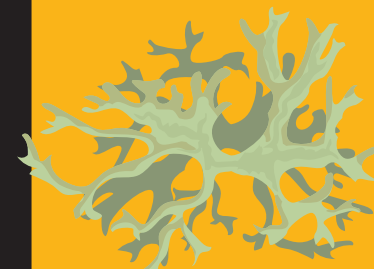
DARK ROCK



ACORN



LEAF



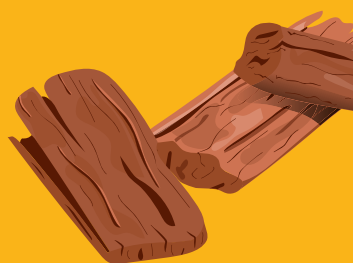
LICHEN



FEATHER



TWIG



BARK



FLOWER



PINE CONE



SAND



A BUD



PALE ROCK



SEED



SOIL



DRY LEAF



SOMETHING
PINK



SOMETHING
BLUE



SHELL



SOMETHING
WITH THORNS



SOEMTHING YOU
MADE FROM
NATURE



SOMETHING MADE
BY HUMANS



SOMETHING
ROUGH



SOMETHING
SMOOTH

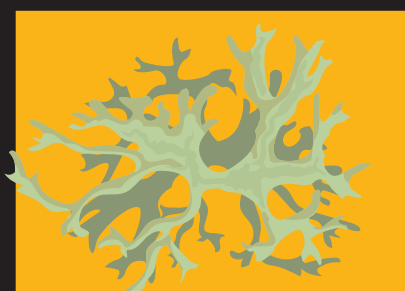


SOMETHING
FLUFFY

Nature Bingo

BINGO CARD 3

Bingo



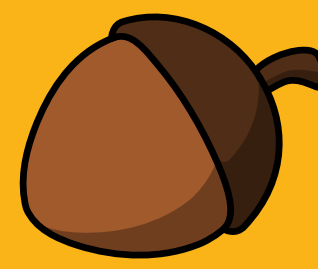
LICHEN



MOSS



DARK ROCK



ACORN



LEAF



PINE CONE



FEATHER



TWIG



BARK



FLOWER



SOIL



SAND



A BUD



PALE ROCK



SEED



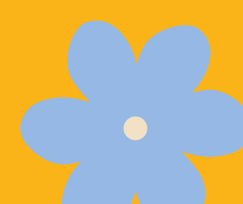
SOMETHING
WITH THORNS



DRY LEAF



SOMETHING
PINK



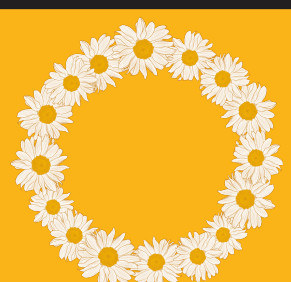
SOMETHING
BLUE



SHELL



SOMETHING
FLUFFY



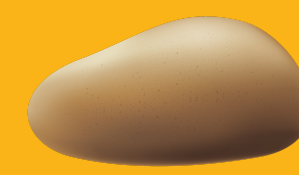
SOEMTHING YOU
MADE FROM
NATURE



SOMETHING MADE
BY HUMANS



SOMETHING
ROUGH



SOMETHING
SMOOTH

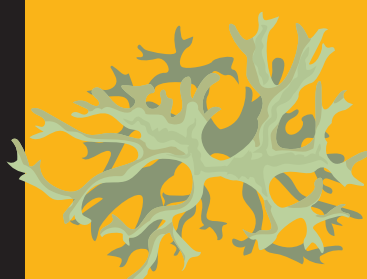
Nature Bingo

BINGO CARD 4

B i n g o



LEAF



LICHEN



MOSS



DARK ROCK



ACORN



FLOWER



PINE CONE



FEATHER



TWIG



BARK



SEED



SOIL



SAND



A BUD



PALE ROCK



SHELL



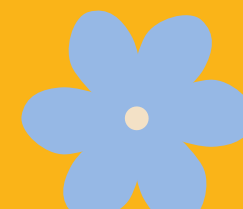
SOMETHING
WITH THORNS



DRY LEAF



SOMETHING
PINK



SOMETHING
BLUE



SOMETHING
SMOOTH



SOMETHING
FLUFFY



SOEMTHING YOU
MADE FROM
NATURE



SOMETHING MADE
BY HUMANS

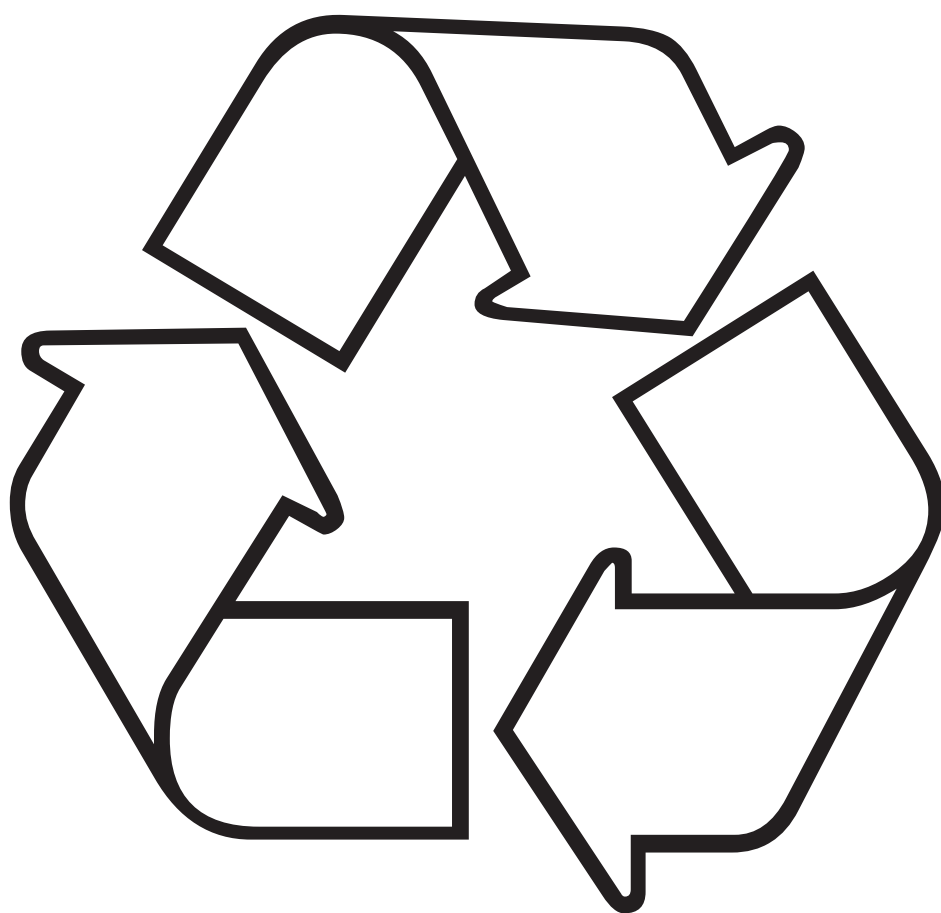


SOMETHING
ROUGH

Wordsearch

A	D	D	N	L	P	I	S	F	E	T	S	I	A
T	T	O	L	A	E	P	E	S	T	L	A	C	S
S	W	O	T	O	E	T	T	B	A	T	L	G	A
E	T	L	U	C	F	C	F	T	T	C	U	S	V
R	L	F	I	A	A	U	M	I	I	E	M	P	E
O	E	E	S	O	U	R	C	E	B	F	I	A	R
F	S	T	E	T	T	I	T	S	A	F	N	C	E
Y	G	R	E	N	E	E	U	B	H	E	I	E	Y
E	N	D	A	N	G	E	R	E	D	B	U	C	A
P	E	S	O	L	A	R	N	R	U	C	M	I	L
A	E	S	L	S	B	E	O	I	P	N	C	A	E
P	R	L	M	P	R	F	F	M	A	E	E	Y	L
E	E	O	L	B	A	O	F	E	T	S	A	W	O
R	G	O	I	S	G	T	L	I	T	T	E	R	H

ENDANGERED
 TURN OFF
 SPECIES
 ALUMINIUM
 SAVE
 HABITAT
 WASTE
 ICE CAPS
 SOLAR
 HOLE LAYER
 SOURCE
 SMOG
 FLOOD
 PAPER
 TAP
 LITTER
 GARBAGE
 EFFECT
 FOREST
 ENERGY



Colour Me!



For You have been a safe place for
me, a tower of strength where I am safe

Psalm 61

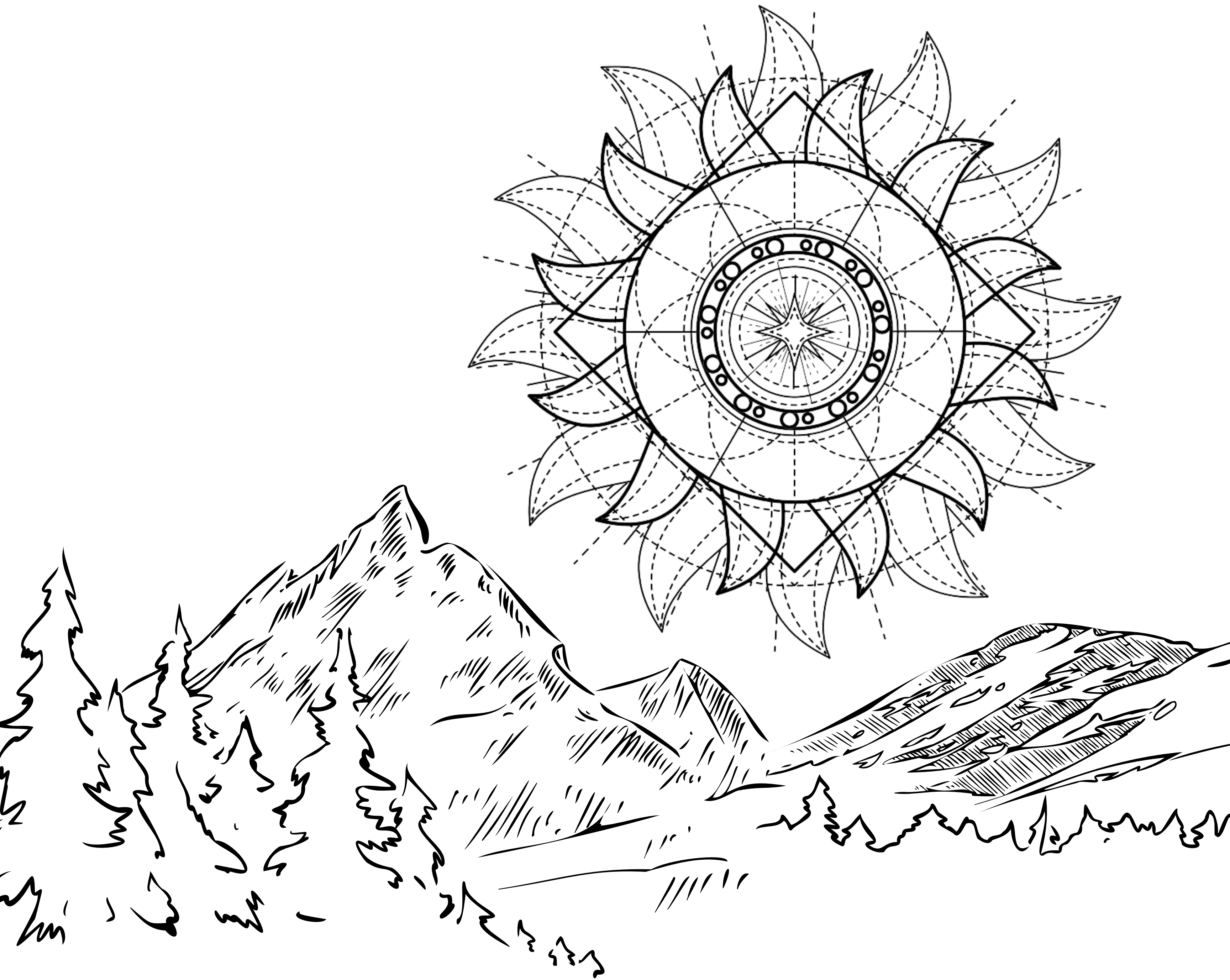
Colour Me!



You made the earth and everything that is on it.
You made the seas and everything that is in them.
You give life to everything.

Nehemiah 9:6

Colour Me!



Before the mountains were born,
and before you created the earth and the world,
you are God. You have always been, and you will always be.

Psalm 90

Colour Me!



Your commands make me wiser,
because they are mine forever.

Psalm 119

Trivia!

You could do this as family trivia night or individually you are welcome to research the answers if you don't know them!

- 1. What colour are emeralds?**
- 2. What is the largest planet in the solar system?**
- 3. What colour are dandelions?**
- 4. How many ounces are there in a pound?**
- 5. Which tree has a variety called "Weeping"?**
- 6. How many sides does a hexagon have?**
- 7. What has the scientific formula H₂O?**
- 8. Which is the only vowel not on the top row of a computer keyboard?**
- 9. The African and Asian are the two main forms of mammal, with their ear size being an easy way to tell which is which?**
- 10. What is the innermost colour of a rainbow?**
- 11. Which planet is known as "The Red Planet"?**
- 12. Feline means relating to what sort of animal?**
- 13. The name for which group of prehistoric animals comes from the Greek for "terrible lizard"?**
- 14. What are the young of frogs and toads called?**
- 15. In computing, what is Mb short for?**

Trivia!

Here are the Answers!

- 1. What colour are emeralds? Green**
- 2. What is the largest planet in the solar system? Jupiter**
- 3. What colour are dandelions? Yellow**
- 4. How many ounces are there in a pound? 16**
- 5. Which tree has a variety called "Weeping"? Weeping**
- 6. How many sides does a hexagon have? 6**
- 7. What has the scientific formula H₂O? Water**
- 8. Which is the only vowel not on the top row of a computer keyboard? A**
- 9. The African and Asian are the two main forms of mammal, with their ear size being an easy way to tell which is which? Elephant**
- 10. What is the innermost colour of a rainbow? Violet**
- 11. Which planet is known as "The Red Planet"? Mars**
- 12. Feline means relating to what sort of animal? Cat**
- 13. The name for which group of prehistoric animals comes from the Greek for "terrible lizard"? Dinosaur**
- 14. What are the young of frogs and toads called? Tadpoles**
- 15. In computing, what is Mb short for? Megabyte**

A-maze!

Here is a Labyrinth – take some time and trace your finger around the shape. The lines goes on forever, just like God! Can you make a labyrinth in your garden or local park, or draw one in some sand on the beach or in a sandbox?

I wonder what God finds amazing about you? I wonder what doesn't end?

I wonder where you find God?

