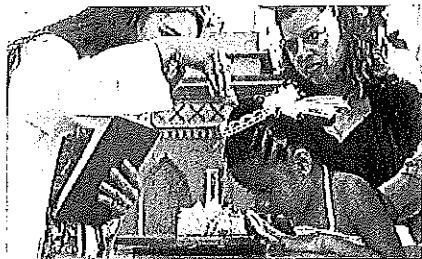
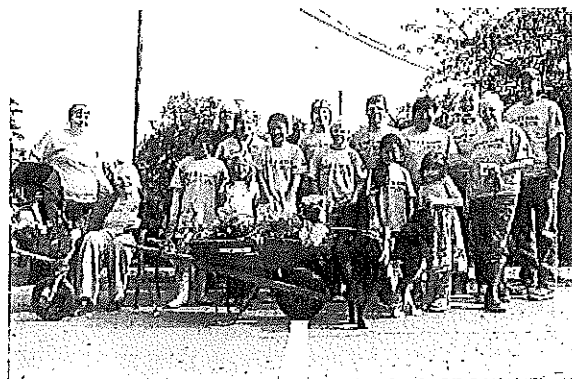




Our Faith in Action

Annual Report of the Congregation

Like good stewards of the manifold grace of God, serve one another with whatever gift each of you has received (1 Peter 4:10).



REVISED
02/11/2014



Evangelical Lutheran Church in America
God's work. Our hands.

ANNUAL REPORT OF THE CONGREGATION

Dialogue and prayer

Praise the LORD!

Praise the LORD, O my soul!

I will praise the LORD as long as I live;

I will sing praises to my God all my life long.

Happy are those whose help is the God of Jacob,
whose hope is in the LORD their God,

who made heaven and earth, the sea, and all that
is in them;

who keeps faith forever;

who executes justice for the oppressed;

who gives food to the hungry.

Praise the LORD!

Praise the LORD, O my soul!

(from Psalm 146)

Almighty God,

your Holy Spirit equips the church

with a rich variety of gifts.

Grant that we may use them to bear witness
to Christ in lives that are built on faith and love.

Make us ready to live the gospel and eager

to do your will, so that we may share with

all your church in the joys of eternal life;

through Jesus Christ, our Savior and Lord.

Amen.

(Evangelical Lutheran Worship: Occasional Services, p. 393)

Scripture reading

1 Peter 4:10

Like good stewards of the manifold grace of God, serve one another with whatever gift each of you has received.

Hymn

We All Are One in Mission



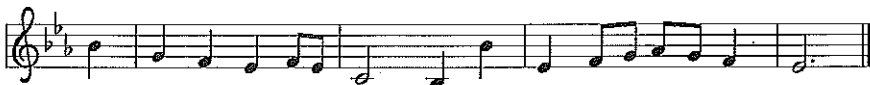
1 We all are one in mis - sion; we all are one in call,
2 We all are called for ser - vice, to wit - ness in God's name.
3 Now let us be u - nit - ed, and let our song be heard.



our var - ied gifts u - nit - ed by Christ, the Lord of all.
Our min - is - tries are dif - f'rent; our pur - pose is the same:
Now let us be a ves - sel for God's re - deem - ing Word.



A sin - gle great com - mis - sion com - pels us from a - bove
to touch the lives of oth - ers with God's sur - pris - ing grace,
We all are one in mis - sion; we all are one in call,



to plan and work to - geth - er that all may know Christ's love.
so ev - 'ry folk and na - tion may feel God's warm em - brace.
our var - ied gifts u - nit - ed by Christ, the Lord of all.

Keyboard accompaniment is at
Evangelical Lutheran Worship
#576, Lutheran Book of Worship
#339, or With One Voice #755.

Scripture quotations are from the
New Revised Standard Version
Bible (NRSV).

Other possible hymns/songs:

We Give Thee but Thine Own

ELW #686

LBW #410

We've Come This Far by Faith

ELW #633

TFF #197

Text: Rusty Edwards, b. 1955

Music: KUORTANE, Finnish folk tune

Text © 1986 Hope Publishing Company, Carol Stream, IL 60188. All rights reserved. Used by permission.

Duplication in any form prohibited without permission or valid license from copyright administrator.

Reprinted under license #77243

**Mt. Zion Lutheran Church
Semi-Annual Meeting**

January 26, 2014 ~ 9:45 AM

MEETING AGENDA

Call to order:	Sue Jurgens, President
Opening prayer:	Pastor Steve Ohrtman
Approval of agenda:	Liz Casper, Secretary
Approval of previous minutes:	Liz Casper (June 30, 2013 meeting)
Ministry report:	Pastors Steve and Deb Ohrtman
Approval of nominating committee:	Sue Jurgens
Proposed committee members: Liz Casper, Karen Pedderson, Joe Driscoll	
Stewardship of finances for 2014 and Approval of Budget:	Rondi-Rohr Dralle, Treasurer
Closing remarks:	Sue Jurgens
Lord's Prayer and Benediction:	Pastor Deb Ohrtman

**Mt. Zion Lutheran Church
June 30, 2013 - 9:30 a.m.
Semi-annual meeting notes**

Present: Approximately 75 people in attendance

Call to order: Sue Jurgens, President

Opening prayer: Pastor Steve Ohrtman

Approval of Agenda: Sue Jurgens

Jim McTaggart called for motion to approve the agenda. Tom Ertel seconded the motion. All approved.

Approval of previous minutes (from Jan 27, 2013): Sue Jurgens

Liz Casper called for motion to approve minutes. Jeannie Finn seconded the motion. All approved.

Financial Update: Rondi Rohr-Dralle, Treasurer

Rondi reviewed the General fund income and expense reports. By in large we are trending below in income but below in budgeted expenses too. Summer is historically a low income time, so we are hopeful to see an increase in fall. (See reports for details)

Nomination and approval of Mary Pfaff and Douglas Johnson for Leadership Board:

Joe Driscoll called for the motion to approve. Melissa Stuczynski seconded the motion. All approved.

A copy of Mary and Doug's biographies were included with the meeting agenda.

Mortgage update: Sue Jurgens

Sue shared the news that after numerous attempts, we have not heard back from Marine Bank on the possibility of refinancing our loan. Due to their lack of response, we will reach out to new banks. While disappointed, we have a strong story to share with potential banks and we will contact new banks to determine any interest.

Bring friends forward (BFF): Liz Casper

Liz presented the BFF program. This program encourages all members to bring friends, co-workers, relatives, acquaintances to church. If desired, guests will be introduced during the service. Mt. Zion is known as a welcoming church and this effort will add to that mission. Bringing new people to church (and ultimately joining the church) is a win-win for all. It's important to start talking about Mt. Zion first. Sometimes talking about your church is not easy – so it's important to do this as you are comfortable. Once people come to Mt. Zion, the church and members speak for themselves. Anyone interested in working on this committee should contact Chris Kress. (group consists of Pat Campbell, Judy Hutto, Andrea Cockerham, Dawn Driscoll)

Worship on Wednesday: Pastor Steve Ohrtman

The Wednesday evening church service line up is ready. Choose from a variety of themed services! These services are great for people that are gone over weekends. Be sure to let all people know that a dinner is served prior to the service at 6 p.m.

Health of the church: Pastor Steve Ohrtman and Pastor Deb Ohrtman

Pastors are excited about Wednesday services. A big thank you to the Sherry Downs for taking over the Cross Training leadership. She has a wonderful team working with her too and thank you to them as well. Thank you to all who helped with the spring and summer clean-up of the church. It takes everyone's efforts to keep the church in shape. Melissa Stuczynski spoke about her role with the youth. She is excited and engaged and we thank her for all her efforts in educating and supporting the youth of the church. A question was asked about the envelopes on the windows. The envelopes are there for hopeful donations. Any monetary amount is appreciated.

Lord's Prayer and Benediction: Pastor Deb Ohrtman

Meeting adjourned:

Sue Jurgens called to adjourn. Gary Goll seconded. All approved.

Meeting was adjourned at 10:30 a.m.

Submitted:

Liz Casper

08.13.13

2013 Pastors' Report

"I thank God in all my remembrance of you". Paul begins his first letter to the church in Corinth with these most important words. We echo his words about you and love you as Jesus does his people.

When we think of this past year of 'life together' with you, we first think of the word 'gratitude'. We are thankful for your faith and witness to God's love for us all. God bless you as you continue your journey of faith.

We have continued with the heart of the 'good news'—that God's grace is for all and that all really are welcome at Mount Zion. Nothing is more important, it is what we are all about, it is God's amazing gift to a broken world.

Thank you for sharing your 'time, talent and treasures'. Through you God brings God's church alive and through you God does God's work in the world. You are dearly appreciated!

A couple comments on our financial condition—we are doing great with our mortgage payments and making every monthly payment! At the same time we are a little behind (about 10%) in our general budget pledges. We know that to continue our many, many ministries we will need to grow about 10% in our general budget giving. We can do that!

So we ask you all in the spirit of Jesus to please increase your general budget giving by 10% if you are able to do so. As your pastors we will do that and lead the charge! We then can be strong in the work of the church! Thank you from the bottom of our hearts!

Thank you to the Endowment Team for the money for our new church sign! God's Word takes many forms and we are grateful to be able to proclaim God's Word on North Avenue in a new, exciting way! It has already become part of our 'inviting ministry'! (Thank you to our wonderful inviting team for beautiful postcards to thousands of homes—they are working!)

Also we say thank you to the family who gave a special gift (above and beyond their normal general budget giving) for the new tables and chairs for the Gathering Space and Hearth Room! We can feel growing fellowship for our church family.

Please note that both the new church sign and new tables and chairs are from special gifts—not our general congregational budget.

Thank you also to all of you who faithfully responded to the December request for a "13th month" gift to our general budget! Your faithful response gave another \$20,000 to pay bills. God bless you!

Thank you to Chris Bremer, Donna Harder, Bob Christianson, Sherry Downs, Melissa Stuczynski for the superb work in administration, bulletins and A/V and church sign ministry, opening and closing and cleaning our church, leading our outstanding Sunday school and our exciting youth ministry! You are all 'truly the best' and we love you!

Thank you to our church president Sue Jurgens and to our whole leadership team. You are a joy to work with, your faith inspires us and we love you dearly! The whole church is blessed to have you leading Mount Zion!

We look forward to another growing, peaceful, faithful year of 'life together' —God's work through Tosa Cares, the best Sunday school in Milwaukee, fantastic music—Larry, Brian, choir...Mark and contemporary musicians, and so much and so many more great people!

The Holy Spirit will continue to be at work and will lead us into even more exciting blessings! God bless you all!

Your thankful pastors,
Steve and Deb Ohrtman

Mt Zion Balance Sheet - All Funds
December 31, 2013 - Corrected

Assets

Cash and Money Market

Operating Fund	\$	34,460
Building Fund	\$	79,648
Endowment Fund	\$	13,141
Other	\$	19,895
Subtotal Short Term	\$	147,144

Long-term Assets

Endowment Fund	\$	135,522
----------------	----	---------

Fixed Assets

Computer/Office Equipment	\$	15,798
Furniture & Fixtures	\$	12,021
Building & Grounds	\$	6,057,980
Subtotal	\$	6,085,799

Total Assets

Total Assets	\$	6,368,465
---------------------	-----------	------------------

Liabilities and Fund Balances

Accounts Payable	\$	30,977
Accruals	\$	16,179
Prepaid Pledges	\$	92,214
Subtotal Short Term	\$	139,370

Mortgage

Mortgage	\$	2,765,626
----------	----	-----------

Contingency Reserve

Contingency Reserve	\$	15,580
---------------------	----	--------

Fund Balances

Operating Fund	\$	(8,942)
Building Fund	\$	3,288,263
Endowment Fund	\$	148,673
Other Funds	\$	19,895
Total Fund Balances	\$	3,447,889

Total Liabilities and Funds

Total Liabilities and Funds	\$	6,368,465
------------------------------------	-----------	------------------

Mt Zion Operating Fund

	2013 Budget	2013 Actuals	2014 Budget	
Support and Revenue				
Member Regular Giving	483,000	450,132	430,000	
Visitor/Holiday	14,400	13,620	14,100	
Rent and Other	12,200	9,853	15,000	rent out another office
Bequest	32,000	41,920	15,580	
Special appeal			43,720	to balance the budget
Total Revenue	541,600	515,525	518,400	
Expenses				
Welcoming and Gathering	5,650	4,776	5,300	
Preparing and Strengthening				
Music and Worship	13,200	14,400	14,500	
Education	5,450	2,541	3,000	
Administration	22,300	19,761	20,000	
Property	65,000	42,279	36,000	Snowplow savings
Utilities	47,500	52,905	53,000	
Pastoral & Staff Compensation	353,000	352,905	361,600	Healthcare \$6000 higher
Outreach and Synod				
Total Expenses	29,055	25,958	25,000	
	541,155	515,525	518,400	
Net Surplus (Deficit)	445	-	-	

Mt Zion Building Fund

Income

Previous campaign pledges			
2014-2018 Campaign			
Pledges			176,028
Endowment Fund			10,000
Contributions - unpledged	8,000	8,162	8,000
Dollar-a-day donations	15,000	10,462	10,000
Total Income	203,000	183,122	204,028

Expense

Regular Mortgage Payments	194,000	193,985	189,780
Expenses	5,000	499	4,000
Dollar-a-day	22,000	17,360	10,000
Total Expenses	221,000	211,844	203,780

Net Surplus (Deficit)

	(18,000)	(28,722)	248
--	-----------------	-----------------	------------

**Mt. Zion Endowment Fund
Statement of Fund Activities
For the Year Ended 12/31/13**

Endowment Fund Assets 12/31/12 **\$147,083**

Receipts and Income

Contributions Received	\$345
Investment Dividend and Interest Income	3,887
Capital Gain Income (Net of Capital Losses)	<u>11,866</u>
Total Receipts and Income	\$16,098

Disbursements and Expenses

Expenditures for New Church Electronic Signage	\$14,748
Mutual Fund Fees	<u>25</u>
Total Disbursements and Expenses	<u>\$14,773</u>

Endowment Fund Assets 12/31/13 **\$148,408**

2011 Investment Portfolio Yield Based on Average Invested Balances	1.17%
2012 Investment Portfolio Yield Based on Average Invested Balances	8.63%
2013 Investment Portfolio Yield Based on Average Invested Balances	10.38%

**Mt. Zion Endowment Fund
Balance Sheet
As of 12/31/13**

Assets

Money Market Funds & Cash	\$12,886
Mutual Fund Investments	<u>135,522</u>
Total Assets	\$148,408

Liabilities and Net Assets

Loans and Advances	\$0
Endowment Fund Net Assets – Unrestricted	15,983
Endowment Fund Net Assets – Temporarily Restricted	132,425
Endowment Fund Net Assets – Permanently Restricted	<u>0</u>
Total Liabilities and Net Assets	\$148,408

2013 Mt. Zion Ministries

Your prayerful gifts are used for numerous ministries at Mt. Zion.

A year in review and your gracious gifts . . .

Christmas Has a Heart & Random Acts	\$ 4,479 to local outreach services & ministries
Building Mortgage Principal Reduction	\$10,462
World Hunger / Disaster Relief	\$845
Energy Assistance	\$905
Greater Tosa Interfaith	\$318
Lenten Offerings – used for mission	\$702*
TOSA Cares	\$2,518
Good Samaritan	\$682
Reformation Partnership	\$4,377
School Supplies monetary donations	\$417
Helping Hands	\$317
Needy Families	\$537
Building Fund Memorials	\$2,085
Sunday School Children's Offerings	\$640*
Synod Benevolence	\$23,012*
Pastor / Staff gifts	\$ 70*
Endowment Offerings	\$505
Sound System	\$2,641
Youth Fundraising, Offerings & Workcamp	\$3,998
Prayer Shawl Ministry	\$383*
Other Dedicated Ministry Offerings	\$5,925
In Kind Donations	\$ 1,112 in items members purchased for the church without reimbursement
Prayer Shawls Given Out	Over 45 in 2013, over 545 total since 2005
Operation Christmas	\$ Over 100 gifts of \$20 to \$25
Food, Mittens, Hats, Socks, etc.	\$ hundreds of dollars in donations

OVER \$41,000 IN DESIGNATED DOLLARS FOR MINISTRY GIVEN AND OVER \$24,500* GENERAL FUND DOLLARS FOR BENEVOLENCE

YOUR GENERAL FUND PLEDGE PROVIDES FOR OUR OPERATING BUDGET TO FACILITATE THE MINISTRIES OF MT. ZION WITHOUT ADMINISTRATIVE EXPENSE OR OVERHEAD - 100% OF YOUR DESIGNATED OFFERINGS FOR MISSION IS USED FOR THAT PURPOSE. MT. ZION IS SUPPORTED SOLELY BY YOUR GENEROUS CONTRIBUTIONS

THANK YOU for your continued support and love. These ministries would not be possible without you.

*Mt. Zion Leadership and Executive Team
Pastor Steve - Pastor Deb*

Continual programs & services offered . . .

Quiet Day-Prayer Labyrinth Ministry
Mutual Ministry Team
Festal Décor Ministry Team
Community Bible Study
Special Guest Nights
ACOA meetings
Blood Drives
Spiritual & Grief Counseling
Collection of School Supplies
Collection of Mittens, Socks, Hats
TOSA Cares Food & Clothing Pantry
Adult Forums
First Communion Classes
Women's Bible Study
Education Advisory Team
New Member Meetings
Lenten Services
Prayer Group
Sunday School Children's Choir
Weddings, Baptisms, Funerals
Audit & Finance Ministry Team
Safe Haven for Tosa Montessori School
Property Volunteers & Maintenance Ministry

Worship Facilitation

Lay Preaching
Acolytes
Assisting Ministers
Communion Deacons
Lectors
Ushers
Greeters
Altar Care
Offering Stewards
Nursery Care
Bulletin Stuffers

Mt. Zion Book Club
Inviting Ministry Team
Movie Club
Women's Retreat Planning
Financial Peace University
Synod gatherings at Mt. Zion
Partners in Faith Dinners & Study
Visitation / Homebound Ministry
Love Circle
Collection of Hygiene Products
Office and Administrative Volunteers
Love & Logic Classes
Prayer Shawl Ministry
Confirmation Program & Mentors
Rotation Sunday School
Coffee Hour Ministry
Brown Bag Bible Study
Festival Bells, Voices of Zion
Dine & Discover
Home Bible Study Groups
Leadership Board

Youth Ministry

Workcamp
Youth Quake
Youth Service Projects
Youth Gathering
Special Guests Event
Fellowship Activities

2013 MEMBERSHIP REPORT

SYNOD REPORT MEMBER TOTAL DECEMBER 2012	925
--	------------

2013 First Quarter Additions & Subtractions

Baptisms	4
New members	10
Inactive members removed	-17
Transferred out	-7
TOTAL 3/31/2013	915

2013 Second Quarter Additions & Subtractions

Baptisms	8
New members	10
Inactive members removed	-11
TOTAL 6/30/2013	922

2013 Third Quarter Additions & Subtractions

Baptisms	4
New members	4
Deaths	-1
Transfers out	-1
TOTAL 9/30/2013	928

2013 Fourth Quarter Additions & Subtractions

Baptisms	4
New members	6
Deaths	-5
Transfers out	-17
TOTAL 12/31/2013	916

ANNUAL REPORT OF THE CONGREGATION

Dear sisters and brothers in Christ,

We are a church that believes Jesus is God's "Yes" to us. Our lives can be a "Yes" to others. As members of the Evangelical Lutheran Church in America (ELCA), we believe that we are freed in Christ to serve and love our neighbor. With our hands, we do God's work of restoring and reconciling communities in Jesus Christ's name throughout the world.

God calls us to serve one another — to be a "Yes" to others — using whatever gifts each of us has received. Our nearly 10,000 congregations, 65 synods and churchwide ministries respond to this call and engage in mission in their neighborhoods, communities and around the world. The portion of your congregation's financial gifts that you share with synods and churchwide ministries, your Mission Support offering, makes this possible.

Together we are developing new leaders, building and renewing congregations, supporting churches around the world, working for justice and peace, nurturing youth and young adults and cultivating faith communities. We are all missionaries: sharing the gospel through service to others, building community and providing life-sustaining ministries.

God is calling us into the world to do God's work in Christ's name. It is your faithful support that makes this work possible. Your Mission Support offering makes it possible for synods and churchwide ministries to keep ongoing commitments to ministry partners near and far and to respond where needs are greatest.

We are a church with a heart for mission. And we pledged at the 2013 Churchwide Assembly to deepen and expand our outreach in the next five years starting in 2014 through "Always Being Made New: The Campaign for the ELCA." We are a church that rolls up its sleeves and gets to work, and we have a lot of work to do in the years ahead to achieve the great goals that we have set out for ourselves. We will need everyone's support to maintain the existing ministries that are made possible through your Mission Support offering — and to support new endeavors.

God loves each of us and cares for us deeply. It is because of this love that we are set free to serve the world and love others. I am grateful for your generosity and the ways God is at work both in us and through us!

Faithfully,



Rev. Elizabeth A. Eaton
Presiding Bishop
Evangelical Lutheran Church in America



PHOTO BY MICHAEL WATSON

ANNUAL REPORT OF THE CONGREGATION

Why we give

Our financial generosity is an expression of our love for God and for our neighbor. A critical component of what we do together is the offering made by you and your congregation that is shared for synod and churchwide ministries. We call this Mission Support, which makes it possible for ELCA members from Alaska to the Caribbean to be responsive as one church to exciting new opportunities for ministry.

Funding our mission

Mission Support is an important percentage of your weekly offering. Many congregations set a goal of 10 percent or greater for Mission Support through their synod and do additional giving beyond their congregation. In this way congregations are making a difference in their giving both in and through their church. Your congregation shares its Mission Support offering with the other two expressions of this church.

Where your offering goes

Mission Support is the lifeblood of the work that God does through the ELCA.

