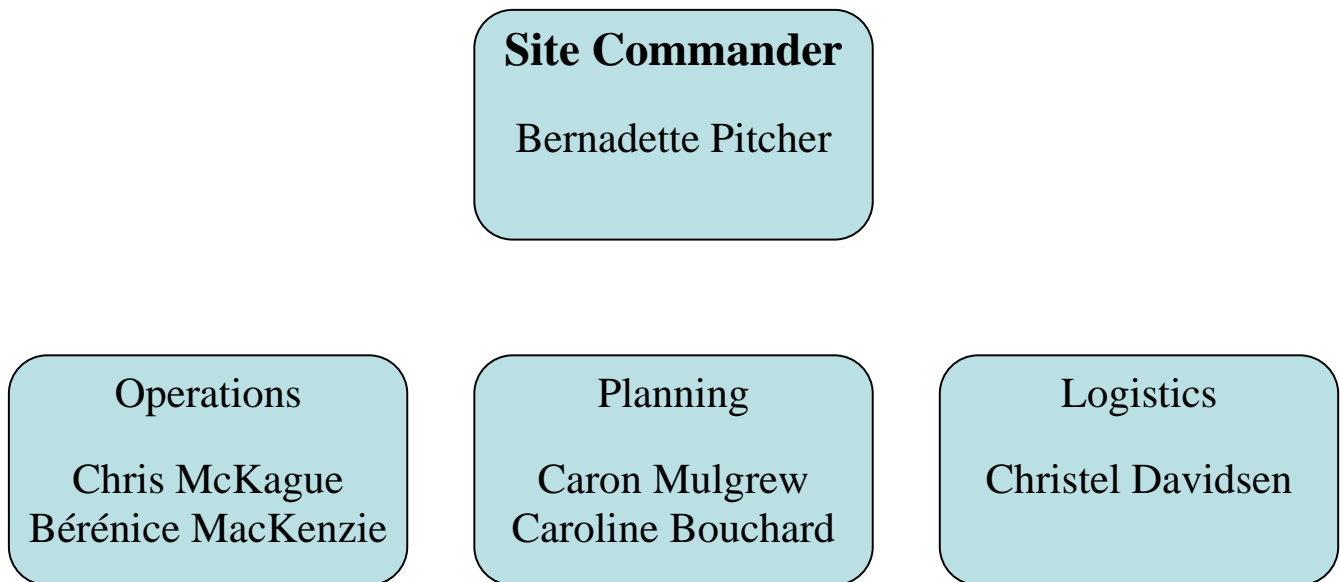


INCIDENT COMMAND STRUCTURE



Site Commander – in communication with first responders and Incident Commander- (Fire, Police, etc.). Responsible for communications with media and parents.

Divisions:

- Operations – Responsible for damage assessment, first aid-team, search and rescue, shelter/care, crisis intervention and student release/reunification, shutting off gas, electricity and water, establishes first aid stations and supplies are deployed.
- Planning – responsible for situation assessment and future planning.
- Logistics – responsible for supporting operations, food, supplies, transportation, and facilities, IT support.