

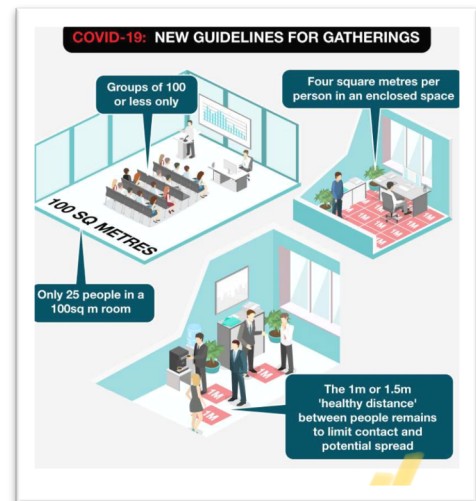
# LIFE CHAPEL

Subject: An update regarding Coronavirus

Dear Life Chapel Family,

What an amazing few weeks it has been at our Sunday gatherings! God is truly doing a good work in us through this 21 days of prayer and fasting. As we are in unprecedented times with the Coronavirus, the landscape of our city and the parameters to operate Church is changing from day to day. We want to keep you updated as the Australian Government has banned all non-essential indoor gatherings of more than 100 people and that all indoor gatherings less than 100 people must have at least 4 square metres per person. This is in addition to existing social distancing advice, such as maintaining a 1-1.5m distance between people when gathered.

Life Chapel is in a fortunate position to still be able to gather on Sunday at the Cockburn Youth Centre. However, to help minimise the impact of Coronavirus, we're putting in place processes and change to help Life Chapel gather safely. Details of these changes are below.



We would love for you to join us at our Sunday gathering, however, if you decide that the safest course of action for yourself and your family is to practice social distance and/or self-isolation, Life Chapel supports your decision. If you are a volunteer and are currently scheduled for Sunday but feel it is safest to stay home, we support your decision, and please let us know ASAP. We would love to support you during this time in the form of prayer, a phone call or a grocery run. Please contact us at [hello@lifechapel.church](mailto:hello@lifechapel.church).

We also know that this is an uncertain time for everyone, and that in these times, it is easy to feel alone and disconnected from others. We encourage you to reach out to those around you and use the amazing world of technology to remain connected.

## Keeping Life Chapel Coronavirus Safe

1. Our hosts will be greeting you at the door like always, however, we will not be shaking hands or hugging people as you enter. We are a loving church and for everyone's well-being, please refrain from physical contact.
2. As you enter, our hosts will also be asking if you or anyone in your immediate family is feeling well and if you've been overseas or been in contact with anyone who has been overseas in the last two weeks. If you are unwell or have been overseas or in contact with someone who has been overseas in the last two weeks, we ask that you refrain from joining us at our Sunday gathering, as per current health guidelines.
3. We encourage everyone to practice good hygiene and have six hand washing stations throughout the venue, and hand sanitiser will be available for use on the front counter in the foyer.



# LIFE CH $\Delta$ PEL

4. We will ensure that the venue is appropriately cleaned and sanitised prior to our service. This will include wiping down off all surfaces throughout the venue, including in the bathrooms.
5. Our children's programs will be running, however, Safari & Lionheart programs will be taking part in activities held outdoors, to help minimise any impacts of enclosed spaces. All equipment will be sanitized before each service and children will also be asked to wash their hands when first signing in.
6. Seats within the auditorium will be spaced 1-1.5m apart as per current health guidelines.
7. We will be running a shorter one hour service, in order to minimise the time we spend in an enclosed area.
8. We will not be taking communion until we receive special pre-packed and sealed communion, to minimise the risk of transmission.
9. We will be limiting the amount of people in the hall and foyer to 80 people, this is less than what the Government currently advises, however we feel that this number is appropriate for our venue.
10. We are temporarily pausing providing refreshments and beverages after the service, to minimise the risk of transmission.
11. We will be providing regular updates, via our Life Chapel app, on what is happening at Life Chapel. Please visit our website ([www.lifechapel.church](http://www.lifechapel.church)) to download the app.

Life Chapel is also currently exploring options for providing materials, such as videos or podcasts, for those at home who cannot join us in person at our services, or if Government guidelines change and we are further restricted from gathering. Also a reminder that our Life Chapel app has various resources and is a great way to stay connected and keep up to date with information.

**As we continue to pray in this time of Prayer and Fasting as a church let's remind ourselves** that we are a community of faith, especially through these uncertain times. We're continuing to believe that God is all powerful and continues to build His Church from strength to strength and Glory to Glory.

Our vision is to bring faith to life and as part of that we need to offer our community hope and love. In our families, workplaces and our community they need the hope and love that only Jesus can bring.

Praying for divine health and protection for you and your family.

Ps John & Sarah Mezbourian  
Lead Pastors  
Life Chapel

