

Mar 18
BULLETIN

WELCOME TO LAMBRICK PARK CHURCH



p. 250.477.9721 | f. 250.477.9746 | e. office@lambrick.com | w. lambrick.com

GORDON HEAD + VICTORIA + THE WORLD

PRAYER MATTERS

We are praying for **Kelly Johnson** who leads **Live Again Rwanda** in providing professional counselling and training for lay counsellors in Kigali, Rwanda. We pray for Kelly as she manages major changes in staff. We give thanks with her for the two incredible interns who are assisting Live Again Rwanda to operate more effectively as an organization, and for the 6th cohort graduates who have just completed their lay counselling course. We also ask for a special blessing for Kelly and Celo as they join their hearts and lives in marriage next Saturday, March 24.

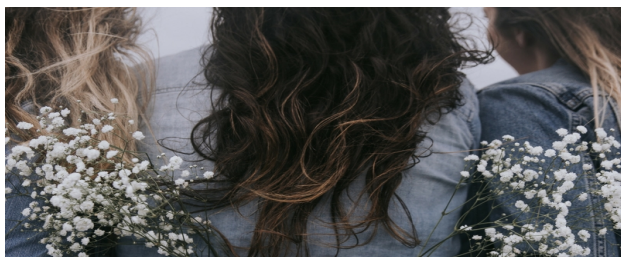
EASTER SERVICES

CITY-WIDE:

GOOD FRIDAY: MAR 30 @ 10AM
PEARKES ARENA

LAMBRICK:

GOOD FRIDAY: MAR 30 @ 7PM
EASTER SUNDAY: APR 1 @ 10AM



Women's Faith Connection

Join us for a social event Tuesday, March 20th at 11 am at the Med Grill Restaurant at 4512 W Saanich Rd.

Our next study begins Tuesday April 3rd at 9:30am in Room 208.

PARTNERS IN CHRIST

A Study in Philippians

Recently we've begun a 10-week study in Paul's letter to the Philippians. As we quickly discover, this is a letter that speaks with fresh relevance to our world and lives today. Within these 4 chapters we find: Paul exploring the challenge of following Jesus in the face of opposition; the call to unity amidst diverse perspectives and agendas; the joy of Christ that no suffering can extinguish; and the life that is in Christ that death cannot defeat.

This morning we reflect on Philippians 2:19-3:1, the humanity of Paul's faith, and the example of others.

Group study/discussion questions are available each week for personal and small group use. Find them on our website www.lambrick.com under "resources". Note that next Sunday will be a break from the series for Palm Sunday, and the final 4 studies are coming soon.

KIDS MINISTRY

Upon arriving, please check your kids in at our check-in station by the main doors. Children stay with their parents in the service until their programs begin.

<i>Kidcare</i>	(ages 0-2 yrs)	Room 115
<i>Jr. Kids</i>	(ages 3-4 yrs)	Room 112
<i>Kids</i>	(K-Gr. 5)	Begin in the Café, end downstairs
<i>APEX</i>	(Gr 6-8)	Youth Room

If you'd prefer to keep your little one with you and need a quiet place there is a staycare room in the office lounge.

Does your child have food allergies? Be sure to let us know at kids@lambrick.com or call the office.

LOGOS HOPE MISSIONS TRIP

14 of us leave on Sunday March 25th for eight days of ministry in Veracruz, Mexico aboard the Logos Hope ship, with Operation Mobilization. The people of Lambrick and local businesses helped raise about \$6,000. The Logos Hope ministry provides a setting for lay people to engage in extraordinary opportunities to lead people to Christ. It also attracts thousands of locals to explore the Christian faith. We will be joining about 400 young crew members from 60 different countries in efforts to share the gospel, encourage the local church, bring practical gifts of help (educational and Christian books, eyewear, water purifiers) and to raise up 2,000 Latin American missionaries. Please pray for team unity and team member health.

Team members: Niki Hebb, Kyle Moniz-Slater, Sue Priestly, John de Jong, Barbara de Jong, Jackson de Jong, Rick Johnston, Geoff Gaunt, Rosemary Gaunt, Denise Harris, Conrad Peden, Mac Peden, Ross Harris, and Val Johnson.



OFFICE HOURS: MON-THURS 9-4:30

Lead Pastor: scott@lambrick.com
 Worship: simon@lambrick.com
 Youth: glen@lambrick.com
 Kids: kids@lambrick.com
 Elders: board@lambrick.com
 Office: treace@lambrick.com
 office@lambrick.com
 Prayer requests: prayer@lambrick.com
 Family Care Team: office@lambrick.com

FINANCIAL UPDATE

Budgeted Giving	
Fiscal Year to Date (Sept-Feb)	\$ 240,420.00
Actual Giving - Fiscal YTD (Sept-Feb)	\$ 246,704.96
Variance	\$ + 6,284.96

UPCOMING WAYS TO CONNECT

Visit lambrick.com for more details.

Sunday	Monday	Tuesday	Wednesday	Thursday	Friday	Saturday
18 10am Service Kids@LPC & APEX Work Camp	19 10:30-noon ELL 7-8:30pm ELL YA Worship 7pm Work Camp	20 7 AM YA Bible Study Women's Faith Connection 11am- Med Grill Work Camp	21 7-8am Prayerwerks 7-9pm Women in the Word Connect Community: High School Youth Community Groups Work Camp	22 7-8:15am Men's Bible Study ELL 10:30-noon Club 412: Middle School Youth Community Groups	23	24
25 10am Service Kids@LPC & APEX	26 10:30-noon ELL 7-8:30pm ELL	27 7 AM YA Bible Study	28 7-8am Prayerwerks 7-9pm Women in the Word Connect Community: Community Groups	29 7-8:15am Men's Bible Study ELL 10:30-noon Club 412: Fear Factor	30 Good Friday Services: City-wide 10am Pearkes Arena Lambrick 7pm	31

we seek to **KNOW, LOVE & SERVE GOD**
 with **GRACE, AUTHENTICITY & HOSPITALITY**
 in our **CHURCH, NEIGHBOURHOOD & WORLD**

