

VICTORIA

Alliance Church

Considerations for facility use during Covid-19 pandemic

While the Church has always remained open and actively ministering, the Covid-19 pandemic has caused the closure of our facility and a temporary end of face to face gatherings. As we move forward in safely using our facility, we want to keep the following guidelines and information in mind as a faith community.

If unwell, stay at home.

We need to adopt some change to our culture and discover together that it is a loving act to bow out of commitments when you are unwell.

All who enter our facility must be feeling 100% well.



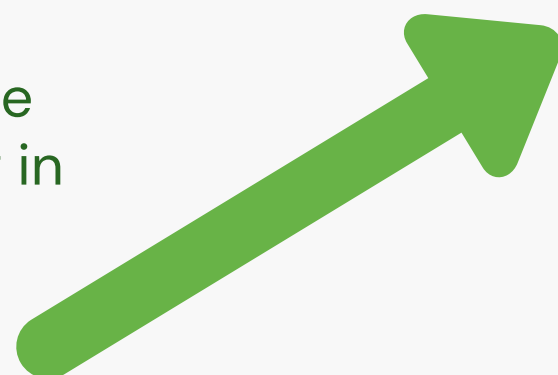
Wash your hands.

Practice good hand hygiene by washing your hands with soap and water or using alcohol or hand sanitizer.



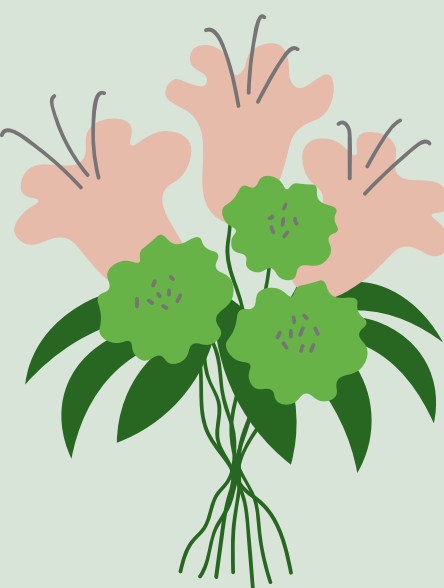
Follow the arrows.

Directional arrows indicate the one way flow of traffic we are creating in our facility. Many doors are now one way. Please take note of the arrows.



Observing Milestones.

While much of our church ministry has been maintained outside of a physical location, there are a few observances that require the opportunity to gather. We will prioritize in our spaces for the observance of end of life celebrations, weddings, and baptisms, in accordance with our Health Officer's most current guidelines.



Prioritize others.

Regardless of how physical distancing impacts your experience, we will prioritize the health and safety of others over ourselves. This kind of otherish-ness is in line with the Gospel message of Jesus.

Always maintain 6 ft / 2 meter distance from others, and refrain from physical greetings. Masks are required indoors at all times.



Keep it small.

When permitted, we will begin with an overly cautious approach. Gatherings will be kept small, with a preferred max. of 12 persons. We will assess group size limits on an case by case basis. All on-site usage must be booked through the church office.

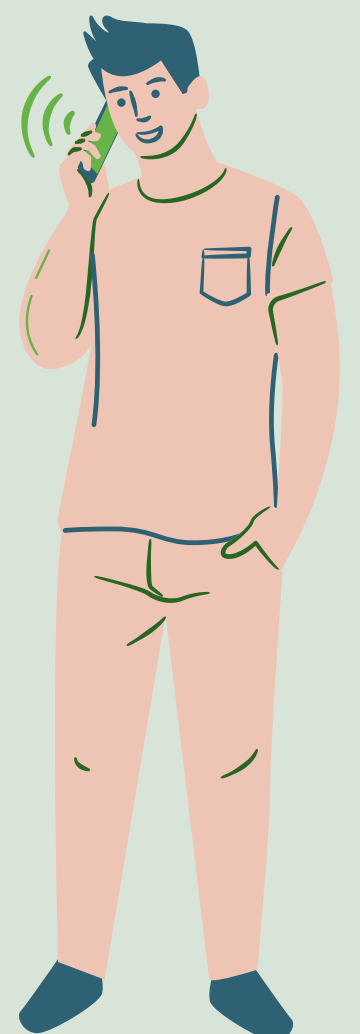
As of November 19, all gatherings are prohibited in our facility. We remain hopeful that we will return to allowing up to 50 people onsite in the near future. Please check with office for details.



Call or email before coming in.

If you plan to come into the church office or the facility at any time, please call our office in advance to ensure we are prepared to receive you on-site.

If you have any questions about visiting our facility, please reach out to the office prior to your visit.



Current on-site limitations

During times when the facility is permitting use, an effort to demonstrate abundant love and care for the vulnerable in our community, while balancing the need to wisely steward our resources and time available for cleaning, we are choosing to impose some limitations on the current use of our facility.

If/when the facility is able to be in use, please note the following:

- There is to be **no food or beverage** service on site at this time. Instead, those gathered are permitted to bring their own personal water bottles and snacks from home.
- There is to be a clearly identified facility supervisor during usage. This individual is responsible to maintain the capacity at or below the agreed upon maximum at all times, and to help encourage physical distancing. Unless otherwise identified, it will be assumed that the facility supervisor is the key holder who has gained access to the facility.
- Sitting is encouraged, as it makes physically distanced interactions much easier to maintain.
- Currently, our preferred gathering maximum is 12 persons. Gathering maximums will be determined in advance through the office. Please note, gatherings larger than 12 persons will be considered, with priority given to those who are observing the life of loved ones now passed, or those who are conducting a wedding ceremony, or VAC watch parties. No gathering is permitted to exceed 50 people in the facility at one time.
- With the exception of private office use by staff, and the gym for our Taste of Encouragement program, the only spaces available to gather at this point are the Sanctuary, Board Room, or Fireside. To help us achieve sustainable cleaning practices, please refrain from walking in other areas of the church facility.

Our commitment

In response to the current Covid-19 pandemic, we want to ensure that our faith community continues to live out its calling to be a Christ-centered, Spirit-empowered Church on mission making Jesus known among us, around us, beyond us. Ensuring the health and safety of those among us affects those around us, and is a part of making Jesus known.

To that end, our leadership has committed to ensure the following:

- We will continue to communicate clearly about how to remain connected with our faith community while absent from our facility. We are committed to a volunteer system of providing pastoral care, and will continue to lean into providing excellent online resources, Sunday Worship at Home experiences, and opportunities for further connection through our website. We continue to suspend our in person Sunday morning worship services.
- We will be continuing to conduct a thorough weekly cleaning and disinfecting of our church building and have added additional cleaning of high contact surfaces surrounding the office and foyer.
- We will maintain contact with our District Office to ensure we are receiving all the pertinent updates regarding our facility care and health and safety recommendations.
- We will continually evaluate the usage of our facility and the adoption of our new procedures to ensure we are working toward full compliance.
- We will take action where we can, take responsibility to educate ourselves and our community about best practices, and take ourselves to prayer to seek God's wisdom in all circumstances.

Facility Supervisor Responsibilities

Specific to the current pandemic and surrounding circumstances associated with re-opening our facility, these are additional responsibilities of which the Facility Supervisor (or key holder) must be aware.

Please note the following:

- All gatherings on-site must be arranged and approved through our Church office in advance.
- The preferred maximum persons for any gathering is 12. However, please be aware there is a hard maximum of 50 persons for our facility. The Facility Supervisor is to ensure the appropriate maximums are not exceeded. **(Please note, as of Nov 19, 2020, all gatherings are suspended until further notice).**
- The Facility Supervisor is to be aware of any area that is accessed by people during their stay on-site. To help the wise stewardship of our cleaning time and resources, we ask that gatherings only happen in the Sanctuary, Board Room, or Fireside at this point.
- The Facility Supervisor will help to ensure that Physical Distancing practices are adhered to. They may need to offer direction or re-direction at times, paying close attention to the request to maintain 2 meter / 6 feet between individuals. People are also to refrain from physical greetings. The Facility Supervisor will make the location of sinks for handwashing known to those on-site.
- The Facility Supervisor will ensure that the high touch areas have been sanitized before leaving (Lysol product to be provided by church, spray touch surfaces and chair handles).
- The Facility Supervisor will complete a list of participants and return to the office. This is a necessary requirement to aid in contact tracing in the unfortunate event of an outbreak.
- The Facility Supervisor will advise the office of any incidents that are worth noting, and of any extraordinary requests for cleaning required.

Office Considerations for Bookings

In response to the current Covid-19 pandemic, we want to ensure that our faith community continues to live out its calling to be a Christ-centered, Spirit-empowered Church on mission making Jesus known among us, around us, beyond us. Ensuring the health and safety of those among us affects those around us, and is a part of making Jesus known. Note: As of Nov 19, 2020, **all** services and gatherings have been suspended until further notice.

When on-site usage is once again permitted, bookings will be determined through the church office with the following consideration:

- The highest priority for our faith community is to support those who are grieving. Funerals and Celebrations of Life will be given priority. They are no exception to the 50 maximum rule, however. Still, it is our hope to be able to assist with the live-streaming of such events as well.
- We will also place high priority to join with others in the celebration of weddings, child dedications, baptisms, and church membership.
- Small and mid-size groups that have been unable to make the switch to online options will be among those we hope to encourage to gather on-site. Groups that are able to make the Zoom meetings work are encouraged to continue doing so.
- Practice and Filming for any portion of our Worship at Home experience will be given opportunity to use the Sanctuary or Foyer for such activities. (Musicians are to be encouraged to spread out throughout the Sanctuary, and are responsible for sanitizing equipment).
- It will be the office practice to only schedule one gathering per day. Where possible, the best practice will be to leave a day of no use in between gatherings.
- The office will coordinate all use by our Rental group for gatherings.
- We will continue to evaluate our procedures and make adjustments as necessary or as the pandemic situation requires.