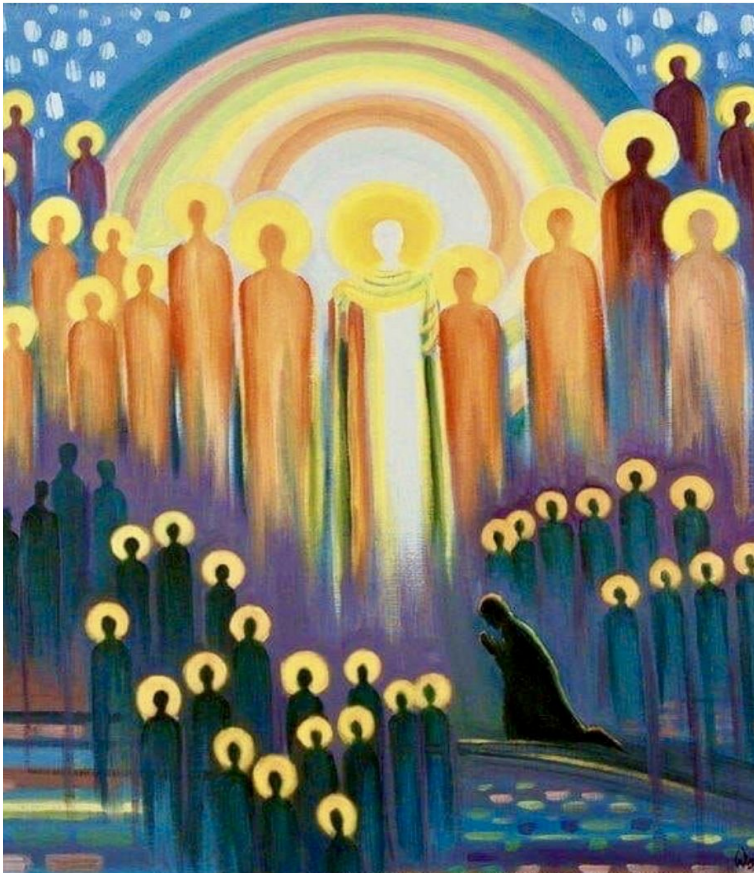


# Welcome to Metropolitan United Church

the downtown church for a diverse city



*All Saints, by Elizabeth Wang*

## Anniversary/All Saints Sunday November 1, 2020

We are an Affirming Congregation of the United Church of Canada, offering welcome and companionship to all, regardless of orientation or designation.

For thousands of years, this land has been the traditional home of the Huron-Wendat, the Seneca, and most recently, the Mississaugas of the Credit River. It is still home to Indigenous people from across Turtle Island. We are grateful to work, live and worship on this land.

*We ask that you wear your mask over your nose and mouth at all times, and maintain physical distancing when exiting after the postlude. Thank you for following these guidelines as we prioritize health and safety. Please see also the back of the bulletin and our webpage on in-person worship.*

# ORDER OF SERVICE

## CARILLON PRELUDE (OUTSIDE-10:30 A.M.)

PRELUDE Suite from *Royal Fireworks* G. F. Handel, arr. Biggs  
Overture/Bourree/The Rejoicing/The Peace/Minuet Finale  
*Prelude on "Down Ampney"* Henry G. Ley

## WELCOME

♪ **OPENING HYMN #705** (*soloist only*) *For All the Saints* Sine Nomine

- 1 For all the saints, who from their labours rest, all who by faith before the world confessed,  
your name, O Jesus, be forever blest. Hallelujah, hallelujah!
- 2 You were their rock, their fortress, and their might: you were their captain in the well-fought fight;  
you, in the darkness drear, their one true light. Hallelujah, hallelujah!
- 3 O blest communion, fellowship divine! We feebly struggle, they in glory shine;  
yet all are one within your great design. Hallelujah, hallelujah!
- 4 The golden evening brightens in the west; soon, soon to faithful warriors comes their rest;  
sweet is the calm of paradise the blest. Hallelujah, hallelujah!
- 5 But lo! there breaks a yet more glorious day the saints triumphant rise in bright array:  
as God to glory calls them all away. Hallelujah, hallelujah!
- 6 From earth's wide bounds, from ocean's farthest coast, through gates of pearl streams in the  
countless host, singing to Father, Son, and Holy Ghost: Hallelujah, hallelujah!

♪ **INVITATION TO WORSHIP AND PRAYER OF APPROACH** (*responses spoken softly*)

One: We gather, with the company of the faithful:

**All: Those who have been this way before  
and those who are just starting their pilgrimage.**

One: We gather, remembering the ones we call saints:

**All: Those who left their mark on our hearts  
and those whose song still echoes within us.**

One: We gather, praising God for all who have shaped our faith:

**All: Those who showed us the dance of love,  
and those who taught us the joys of discipleship.**

One: The Lord be with you.

**All: And also with you.**

One: Let us pray. (please be seated)

## PRAYER OF CONFESSION

## SILENCE FOR PRIVATE PRAYER

ASSURANCE OF PARDON

ACT OF PRAISE *(soloist only)* Hymn #244

Arfon

READINGS                    Isaiah 43:2-3, 18-19  
                                      Psalm 23

READING RESPONSE *(soloist only)*

John Bell

Don't be afraid, my love is stronger than your fear, and I have promised to be always near.

GOSPEL READING            John 14:8-20

ONE: This is a witness of the good news of Jesus Christ.

ALL: **Thanks be to God.**

♪HYMN #367 *(soloist only)* Come Down, O Love Divine

Down Ampney

1            Come down, O love divine, seek now this soul of mine,  
                  and visit it with your own ardour glowing.  
                  O Comforter, draw near, within my heart appear,  
                  and kindle it, your holy flame bestowing.

2            O let it freely burn, till earthly passions turn  
                  to dust and ashes in its heat consuming;  
                  and let your glorious light shine ever on my sight,  
                  and clothe me round, my onward path illuming.

3            And so the yearning strong with which the soul will long  
                  shall far outpass the power of human telling;  
                  for none can guess its grace, till love creates the place  
                  wherein the Holy Spirit makes its dwelling.

SERMON            “**NOW YOU SEE ME. NOW YOU DO.**”

The Rev. Dr. G. Malcolm Sinclair

SOLO *Thou Shalt Know Him*

Mark Sirett

♪PEACE GREETING *(responses spoken softly, then greeting each other with a bow)*

One:    The peace of Christ be with you always.

**All:    And also with you.**

One:    Let us greet one another with the peace of Christ.

♪AFFIRMATION OF FAITH *(spoken softly)*

**We are not alone, we live in God's world.**

**We believe in God:**

**who has created and is creating, who has come in Jesus, the Word made flesh,  
to reconcile and make new, who works in us and others by the Spirit.**

**We trust in God.**

**We are called to be the Church:**

to celebrate God's presence, to live with respect in Creation,  
to love and serve others, to seek justice and resist evil,  
to proclaim Jesus, crucified and risen, our judge and our hope.  
In life, in death, in life beyond death, God is with us.  
We are not alone. Thanks be to God. (please be seated)

## ANNOUNCEMENTS

## OFFERING

## SPOKEN OFFERING

METROPOLITAN HANDBELLS *Brother James' Aire*

arr. Kathleen Wissinger

## ♪DEDICATION OF OFFERING

## ♪GREAT THANKSGIVING

One: Lift up your hearts.

**All: We lift them up to the Lord.**

One: Let us give thanks to the Lord God.

**All: It is right to give God thanks and praise.**

One: Let us pray. (all seated)

## PRAYERS OF THE PEOPLE

### LORD'S PRAYER (all) (*Voices United*, p. 921)

Our Father, who art in heaven, hallowed be thy name,

Thy kingdom come, thy will be done, on earth, as it is in heaven.

Give us this day our daily bread,

And forgive us our trespasses, as we forgive those who trespass against us.

And lead us not into temptation, but deliver us from evil:

For thine is the kingdom, the power, and the glory forever and ever. Amen.

### ♪CLOSING HYMN #183 (*soloist only*) *We Meet You, O Christ* to Laudate Dominum

1 We meet you, O Christ, in many a guise; your image we see in simple and wise.

You live in a palace, exist in a shack. We see you, the gardener, a tree on your back.

2 In millions alive, away and abroad; involved in our life you live down the road.

Imprisoned in systems you long to be free. We see you, O Jesus, still bearing your tree.

3 \*We hear you, O Man, in agony cry. For freedom you march, in riots you die.

Your face in the papers we read and we see. The tree must be planted by human decree.

4 You choose to be made at one with the earth; the dark of the grave prepares for your birth.

Your death is your rising, creative your word: the tree springs to life and our hope is restored.

## ♪COMMISSIONING AND BENEDICTION

### ♪BLESSING (*soloist only*) #429

William Wright

*Please wear your mask & continue to observe a two metre distance when exiting.*

LEADING IN WORSHIP are **The Rev. Dr. G. Malcolm Sinclair**, **The Rev. Karen Bowles** and **The Rev. Jason Meyers**. Reading the lesson is **Dr. Linn Holness**. The ministry of music is offered by Minister of Music **Dr. Patricia Wright**, soprano **Gisele Kulak**, the **Metropolitan Handbells**, and Student Carillonneur **Naoko Tsujita**.

**MUSIC NOTES** The Handel suite is played in memory of longtime Metropolitan member Ronald McKinlay in whose honour the gallery organ was given in 1998. This year marks the 90th anniversary of the Metropolitan organ which was installed and dedicated in April of 1930. The postlude was written in 1950 in honour of the 70th birthday of Healey Willan. S. Drummond Wolff was organist of Metropolitan from 1946-1952.

**TODAY: Help shape the future of Met's outdoor space!** The Park Ministries committee is looking for your feedback on how the grounds of the church can better suit the needs of the congregation and wider community. Join us after the service at 2:00 p.m. on Zoom (see this week's MET Connect email for link).

## PROGRAMS AND EVENTS THIS WEEK

### Monday, November 2 - All Souls' Day

#### Tuesday, November 3

5:00 p.m. Transition Team (Zoom)

#### Wednesday, November 4

9:00 a.m. Fran's Prayer Circle (Zoom)

11:30 a.m. Hospitality Tent

McGill Square Park

12:00 p.m. Bible Study (Zoom) *link at metunited.ca*

7:00 p.m. Congregational Care Committee (Zoom)

#### Thursday, November 5

12:00 p.m. Winter Community Meal Program

Narthex

7:00 p.m. Metropolitan Handbells

Sanctuary

8:00 p.m. Evening Communion (Zoom) *link at metunited.ca*

#### Friday, November 6

12:00 p.m. Noon at Met Concert (Dr. Patricia Wright)

Sanctuary (livestreamed)

#### Saturday, November 7

8:30 a.m. Bible Study (led by Christopher Hoover) *link at metunited.ca*

### NEXT SUNDAY: November 8 - Twenty-Third Sunday after Pentecost

11:00 a.m. In-person Worship and Online Livestream / Remembrance Sunday  
The Rev. Karen Bowles preaching

## FRIDAY NOON AT MET CONCERTS RETURN THIS WEEK

Starting this Friday, November 6 with organist Dr. Patricia Wright, and continuing bi-weekly through December 18, Noon at Met half-hour concerts will be livestreamed on our usual channels.

## NOVEMBER IS STEWARDSHIP MONTH: DISCIPLESHIP IN ACTION

Beginning today, we will hear each week of the many and varied ministries of the church as part of our Offering time. Stewardship Sunday is November 15. Pledge packages will be sent out the following week. Please contact Sheela in the office to update your contact information.

## COOKIES FOR THE WINTER SEASON

Calling all cookie bakers! The new **Winter Community Meal take out system begins Thursday, November 5**, and delicious cookies, always popular with our guests, are welcomed. Tins can be dropped off on a Sunday morning, or call the office to make arrangements.

## TADDLE CREEK WILD CHURCH

Connecting to the sacred through connection with nature. Starting on November 22, we will be offering monthly worship services in the park and other natural settings. There will be prayers and music, readings, reflection and a time wandering. For more information about the Wild Church network, see [wildchurchnetwork.com](http://wildchurchnetwork.com).

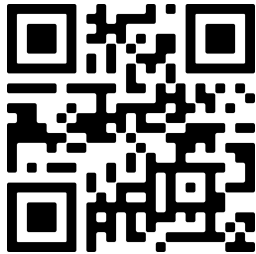
## WEDNESDAY YOGA AND MEDITATION

Yoga and meditation practice via Zoom with Rev. Karen Bowles will be moving to Wednesdays at 10:00 a.m. beginning January 6, 2021.

## PASTORAL CARE

Our ministers are connecting with members and determining the needs of our community during this challenging time. If you would like a pastoral phone call, you can contact Rev. Jason Meyers at [jasonm@metunited.ca](mailto:jasonm@metunited.ca) (416-363-0331 ext. 224).

## CONTINUED GIVING



A new, easy way to donate! Focus your smartphone's camera on the QR code to the left and you'll be directed to our giving page.

You can continue to mail in envelopes and/or cheques to the church, or arrange a pre-authorized remittance for regular giving (PAR) from your bank account, or credit card - fill out a form at [metunited.ca/donate](http://metunited.ca/donate). If you have any questions, please contact Elena Pejcinovska, Financial Manager at [elenap@metunited.ca](mailto:elenap@metunited.ca) or 416-363-0331 ext. 229.

*The Official Board of Metropolitan United Church deeply appreciates your financial gifts. We strive to honour our donors' wishes at all times. When gifts are designated for a specific purpose and the need for that purpose has been fulfilled, your Board will redirect surplus gifts to the closest alternative or the area of greatest need. Thank you again for supporting Met.*

**Subscribe to the MET Connect weekly newsletter: sign up at [metunited.ca](http://metunited.ca)  
Follow Metropolitan on Facebook, Instagram (@metropolitanunitedto) & YouTube**



# METROPOLITAN UNITED CHURCH

---

## DIRECTORY

Intentional Interim Lead Minister: The Rev. Karen Bowles, ext. 227 ([karenb@metunited.ca](mailto:karenb@metunited.ca))  
Minister of Congregational Care: The Rev. Jason Meyers, ext. 224 ([jasonm@metunited.ca](mailto:jasonm@metunited.ca))  
Minister of Music: Dr. Patricia Wright, ext. 226 ([patw@metunited.ca](mailto:patw@metunited.ca))  
Minister Emeritus: The Rev. Dr. G. Malcolm Sinclair ([malcolms@metunited.ca](mailto:malcolms@metunited.ca))  
Context in Ministry Student: Timothy Wisnicki  
Chair of the Official Board: Kenneth Younie ([boardchair@metunited.ca](mailto:boardchair@metunited.ca))  
Children & Youth Ministries Animator: Alana Martin ([alana@thegoproject.ca](mailto:alana@thegoproject.ca))  
Teachers: Karlos Griffith ([karlosgriffith@rogers.com](mailto:karlosgriffith@rogers.com))  
Library: Marion Lick ([library@metunited.ca](mailto:library@metunited.ca)) and Maureen Maguire ([vigrass78@gmail.com](mailto:vigrass78@gmail.com))



### Community Outreach Ministry

Outreach and Housing Worker: Megan Carver, ext. 221 ([housingworker@metunited.ca](mailto:housingworker@metunited.ca))  
Community Service Worker: Stephanie Cunti, ext. 241 ([csw@metunited.ca](mailto:csw@metunited.ca))

### Ministry of Music

Minister of Music: Dr. Patricia Wright, ext. 226 ([patw@metunited.ca](mailto:patw@metunited.ca))  
Wayne C. Vance Organ Scholar: Timothy Wisnicki  
Junior Organ Scholar: Matthew Fraser  
Metropolitan Choir Lead Singers: Gisele Kulak, Chelsea Van Pelt, Valeria Kondrashov,  
Chris Taeyoung Kim, Charles Davidson, Benjamin Stein, Nicholas Higgs, John Schneider  
Director, *Great Heart* Youth Ensemble: Benjamin Stein  
Conductor, *Metropolitan Sparklers*: Dr. Jennifer Martyn  
Carillonneur: Roy Lee  
Director, Metropolitan Silver Band: Fran Harvey



### Administrative Ministry

Director of Administration: Jane Tuomi, ext. 222 ([janelt@metunited.ca](mailto:janelt@metunited.ca))  
Office Administrator: Sheela Taylor, ext. 210 ([sheelat@metunited.ca](mailto:sheelat@metunited.ca))  
Financial Manager: Elena Pejcinovska, ext. 229 ([elenap@metunited.ca](mailto:elenap@metunited.ca))  
Technical Administrator: Vinoth Thanganadan, ext. 223 ([vinotht@metunited.ca](mailto:vinotht@metunited.ca))  
Communications Specialist: Charles Davidson, ext. 228 ([communications@metunited.ca](mailto:communications@metunited.ca))  
Property Manager: Frank Cairns, ext. 231 ([frankc@metunited.ca](mailto:frankc@metunited.ca))  
Custodians: Nadan Kandiah, ext. 304; Puvi Kanagalingam, ext. 305

**56 Queen Street East, Toronto, ON M5C 2Z3**

**Tel. 416.363.0331 Fax. 416.363.7586**

**Email: [metunited@metunited.ca](mailto:metunited@metunited.ca)**

NOTICE OF FILMING Please note that services are considered to be public events, and you are choosing to enter a space where your image may be captured as part of event proceedings that may be made public as part of our livestream, website or social media. We make every effort to ensure your personal information is kept and used in compliance with the Freedom of Information and Protection of Privacy Act (FIPPA). If you have any questions please contact [janelt@metunited.ca](mailto:janelt@metunited.ca).



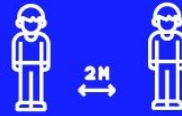
## IN THE SANCTUARY



No food or  
drink



Pick up a bulletin



Keep physically  
distanced &  
follow ushers



Stay in your  
seat



No singing



Use washroom at  
back of Sanctuary

## LEAVING THE CHURCH



Respect  
physical distancing



Offering plates  
at exit



No socializing  
in building